



## **CONTACT INFORMATION**

Mining Records Curator  
Arizona Geological Survey  
1520 West Adams St.  
Phoenix, AZ 85007  
602-771-1601  
<http://www.azgs.az.gov>  
[inquiries@azgs.az.gov](mailto:inquiries@azgs.az.gov)

The following file is part of the

Arizona Department of Mines and Mineral Resources Mining Collection

## **ACCESS STATEMENT**

These digitized collections are accessible for purposes of education and research. We have indicated what we know about copyright and rights of privacy, publicity, or trademark. Due to the nature of archival collections, we are not always able to identify this information. We are eager to hear from any rights owners, so that we may obtain accurate information. Upon request, we will remove material from public view while we address a rights issue.

## **CONSTRAINTS STATEMENT**

The Arizona Geological Survey does not claim to control all rights for all materials in its collection. These rights include, but are not limited to: copyright, privacy rights, and cultural protection rights. The User hereby assumes all responsibility for obtaining any rights to use the material in excess of "fair use."

The Survey makes no intellectual property claims to the products created by individual authors in the manuscript collections, except when the author deeded those rights to the Survey or when those authors were employed by the State of Arizona and created intellectual products as a function of their official duties. The Survey does maintain property rights to the physical and digital representations of the works.

## **QUALITY STATEMENT**

The Arizona Geological Survey is not responsible for the accuracy of the records, information, or opinions that may be contained in the files. The Survey collects, catalogs, and archives data on mineral properties regardless of its views of the veracity or accuracy of those data.

12/14/90

ARIZONA DEPARTMENT OF MINES AND MINERAL RESOURCES FILE DATA

PRIMARY NAME: SUNDAY CLAIM

ALTERNATE NAMES:

MOHAVE COUNTY MILS NUMBER: 706

LOCATION: TOWNSHIP 22 N RANGE 17 W SECTION 23 QUARTER NW  
LATITUDE: N 35DEG 17MIN 03SEC LONGITUDE: W 114DEG 04MIN 17SEC  
TOPO MAP NAME: STOCKTON HILL - 7.5 MIN

CURRENT STATUS: RAW PROSPECT

COMMODITY:

SILICON QUARTZ  
FELDSPAR

BIBLIOGRAPHY:

ADMMR SUNDAY CLAIM FILE

SUNDAY URANIUM CLAIM

Cerbat Mtn.

Kingman, Arizona

MILS  
706

**MELVIN H. JONES**

*Mining Geologist*

T22N R17W  
Sec. 23  
SE NW

Box 406

Wickenburg, Ariz. 85358  
12 October 1976.

RECONNAISSANCE GEOLOGICAL VISIT TO THE "SUNDAY" URANIUM CLAIM,  
CERBAT MOUNTAINS, 6½ miles North, KINGMAN, ARIZONA.

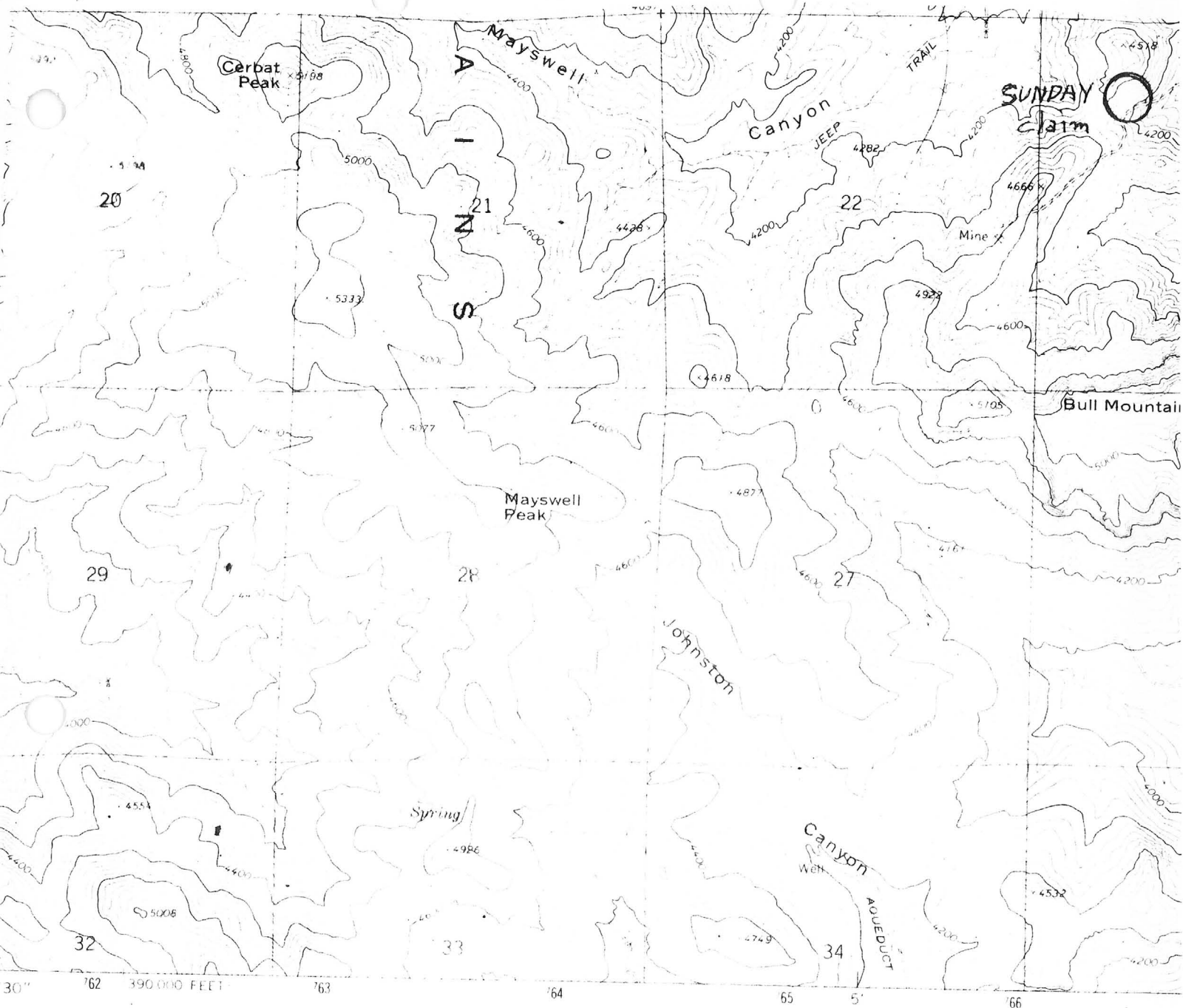
At the request of Mr. Howard S. Gable, Box 946, Kansas City, Mo. 64141, the writer, accompanied by Mrs. Pearl Craig, Kingman, Arizona examined the "Sunday" mining claim owned by Mrs. Craig and associates. This claim is in the Cerbat Mountains 6½ miles North of Kingman, Mohave County, Arizona just to the West of the Stockton Hill road. See attached map.

The claim is located to cover a small pegmatite outcrop in the quartz monsonite host rocks (pre-cambrian). A small pit has been dug in the pegmatite on the side of the mountain with a length of about 20 feet.

The pit area was tested with a geiger counter and no significant counts per minute were noted (other than normal background count).

There is no uranium present in amounts which would encourage further examination or exploration, at this location.

MELVIN H JONES  
Geologist.



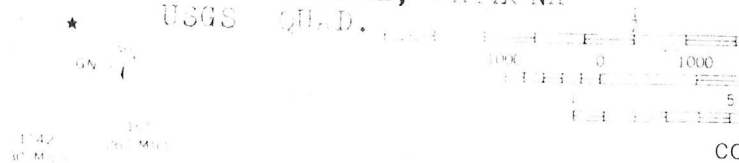
Map compiled, edited, and published by the Geological Survey  
Control by USGS and USC&GS

Topography by photogrammetric methods from aerial  
photographs taken 1967. Field checked 1968

Projection: 1927 North American datum  
10,000-foot grid based on Arizona coordinate system, west zone  
100-meter Universal Transverse Mercator grid ticks,  
zone 11, shown in blue

The red dashed lines indicate selected fence lines

COCKTON HILL, ARIZONA  
USGS QUAD.



U.S. GEOLOGICAL SURVEY  
BULLETIN 1462-A  
1974

THIS MAP COMPLETE  
FOR SALE BY U. S. GEOLOGICAL SURVEY  
A FOLDER DESCRIBING TOPIC