



CONTACT INFORMATION

Mining Records Curator
Arizona Geological Survey
1520 West Adams St.
Phoenix, AZ 85007
602-771-1601
<http://www.azgs.az.gov>
inquiries@azgs.az.gov

The following file is part of the

Arizona Department of Mines and Mineral Resources Mining Collection

ACCESS STATEMENT

These digitized collections are accessible for purposes of education and research. We have indicated what we know about copyright and rights of privacy, publicity, or trademark. Due to the nature of archival collections, we are not always able to identify this information. We are eager to hear from any rights owners, so that we may obtain accurate information. Upon request, we will remove material from public view while we address a rights issue.

CONSTRAINTS STATEMENT

The Arizona Geological Survey does not claim to control all rights for all materials in its collection. These rights include, but are not limited to: copyright, privacy rights, and cultural protection rights. The User hereby assumes all responsibility for obtaining any rights to use the material in excess of "fair use."

The Survey makes no intellectual property claims to the products created by individual authors in the manuscript collections, except when the author deeded those rights to the Survey or when those authors were employed by the State of Arizona and created intellectual products as a function of their official duties. The Survey does maintain property rights to the physical and digital representations of the works.

QUALITY STATEMENT

The Arizona Geological Survey is not responsible for the accuracy of the records, information, or opinions that may be contained in the files. The Survey collects, catalogs, and archives data on mineral properties regardless of its views of the veracity or accuracy of those data.

PRINTED: 08/16/2002

ARIZONA DEPARTMENT OF MINES AND MINERAL RESOURCES AZMILS DATA

PRIMARY NAME: SULPHUR HILLS #3

ALTERNATE NAMES:

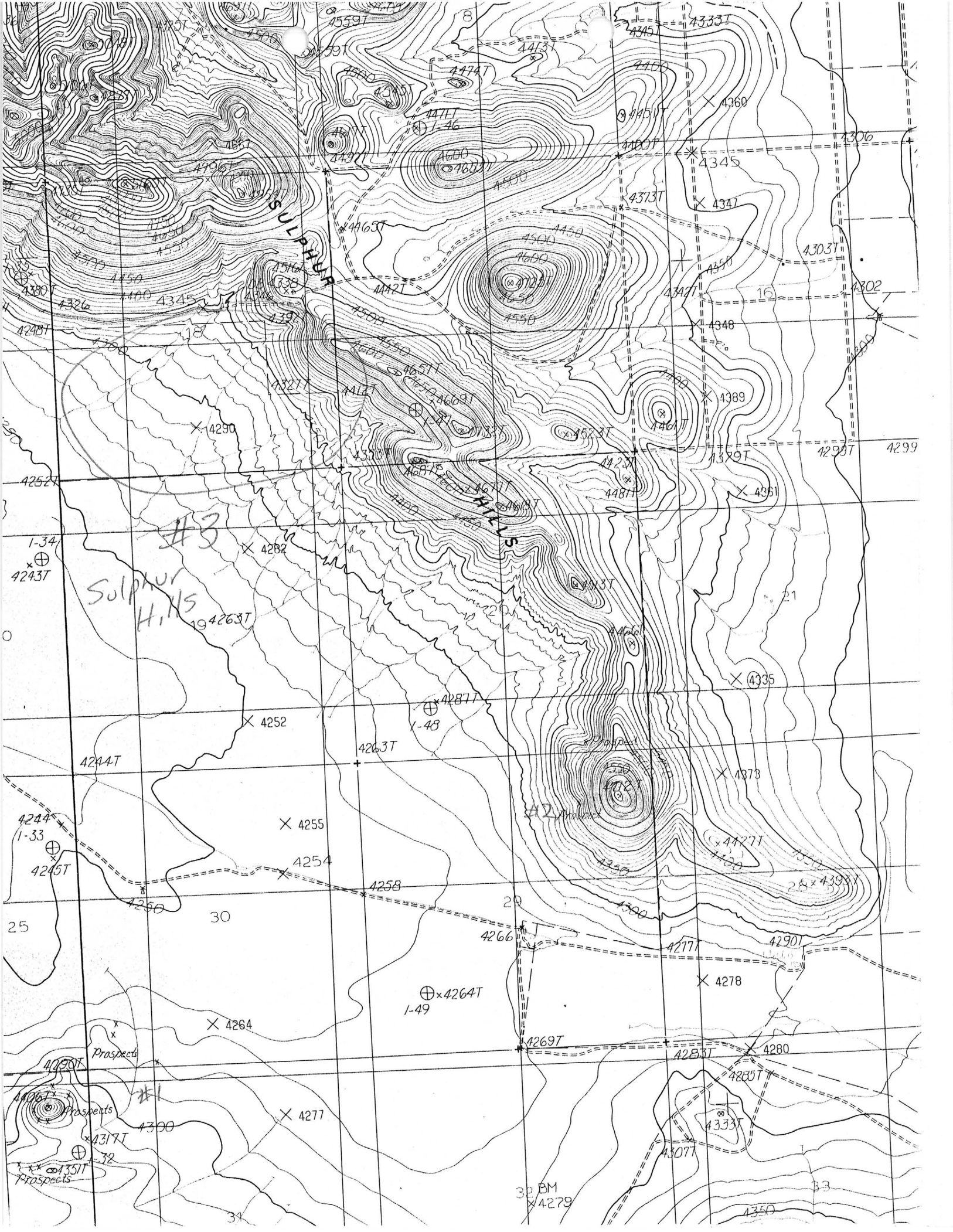
COCHISE COUNTY MILS NUMBER: 898

LOCATION: TOWNSHIP 17 S RANGE 26 E SECTION 18 QUARTER S2
LATITUDE: N 31DEG 57MIN 00SEC LONGITUDE: W 109DEG 44MIN 15SEC
TOPO MAP NAME: SULPHUR HILLS - 7.5 MIN

CURRENT STATUS: EXP PROSPECT

COMMODITY:
GOLD

BIBLIOGRAPHY:
ADMMR SULPHUR HILLS #3 FILE



ARIZONA DEPARTMENT OF MINES AND MINERAL RESOURCES

VERBAL INFORMATION SUMMARY (SHORT FORM)

May be Reproduced

May Be Inserted Into Mine File Or Added To "Rumor Page"

1. Information from: Ramon Shannon (Mining Consultant)

Address: 7740 Rosewood St.

Tucson, AZ 85710

2. Phone: 886-9944

3. Mine: Sulphur Hills #3

4. ADMMR Mine File: SULPHUR HILLS #3

5. County: Cochise

6. MILS Number 898

7. Operational Status: Raw prospect

8. Summary of information received, comments, etc.:

Mr. Shannon reported that the surface owner of the property recently
drilled a water well. The cuttings were panned and are said to have
shown gold. The area is a few miles east of Pearce. The rocks are
Tertiary volcanics.

Date: April 7, 1989

Harrison E. Matson

(signature) ADMMR