



CONTACT INFORMATION

Mining Records Curator
Arizona Geological Survey
1520 West Adams St.
Phoenix, AZ 85007
602-771-1601
<http://www.azgs.az.gov>
inquiries@azgs.az.gov

The following file is part of the

Arizona Department of Mines and Mineral Resources Mining Collection

ACCESS STATEMENT

These digitized collections are accessible for purposes of education and research. We have indicated what we know about copyright and rights of privacy, publicity, or trademark. Due to the nature of archival collections, we are not always able to identify this information. We are eager to hear from any rights owners, so that we may obtain accurate information. Upon request, we will remove material from public view while we address a rights issue.

CONSTRAINTS STATEMENT

The Arizona Geological Survey does not claim to control all rights for all materials in its collection. These rights include, but are not limited to: copyright, privacy rights, and cultural protection rights. The User hereby assumes all responsibility for obtaining any rights to use the material in excess of "fair use."

The Survey makes no intellectual property claims to the products created by individual authors in the manuscript collections, except when the author deeded those rights to the Survey or when those authors were employed by the State of Arizona and created intellectual products as a function of their official duties. The Survey does maintain property rights to the physical and digital representations of the works.

QUALITY STATEMENT

The Arizona Geological Survey is not responsible for the accuracy of the records, information, or opinions that may be contained in the files. The Survey collects, catalogs, and archives data on mineral properties regardless of its views of the veracity or accuracy of those data.

PRINTED: 08/16/2002

ARIZONA DEPARTMENT OF MINES AND MINERAL RESOURCES AZMILS DATA

PRIMARY NAME: SULPHUR HILLS #1

ALTERNATE NAMES:

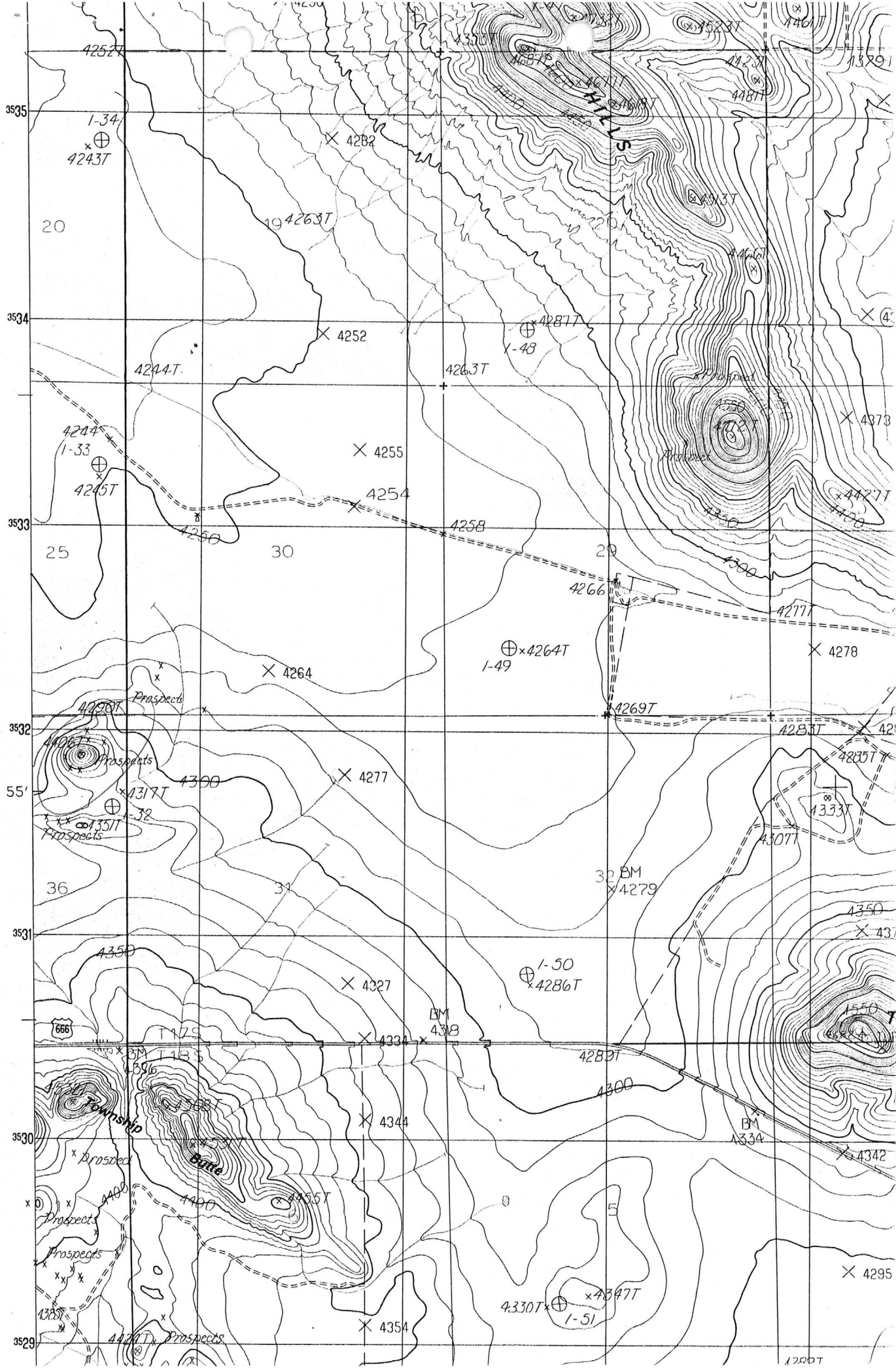
COCHISE COUNTY MILS NUMBER: 896

LOCATION: TOWNSHIP 17 S RANGE 25 E SECTION 36 QUARTER NE
LATITUDE: N 31DEG 55MIN 00SEC LONGITUDE: W 109DEG 44MIN 50SEC
TOPO MAP NAME: SULPHUR HILLS - 7.5 MIN

CURRENT STATUS: RAW PROSPECT

COMMODITY:
GOLD

BIBLIOGRAPHY:
ADMMR SULPHUR HILLS #1 FILE



NEWS RELEASE

HIGH FRONTIER RESOURCES LTD.
650 West Georgia Street, Suite 610
Vancouver, B.C. V6B 4N7
Canada
604 681 0977

May 07 1990

Authorized Shares: 10,000,000
Issued Shares: 4,948,913
VSE Symbol: HFR-V
Parent Company: Tundra Gold Mines Limited owns
500,000 shares

Exploration is underway on four High Frontier properties located in the southwestern United States. The properties are included in a joint venture agreement between High Frontier Resources and Kennecott with High Frontier acting as manager. The joint venture properties are:

1. Uno, located in northwestern Arizona.
2. Township Butte, located just east of the Pearce gold-silver district in southeastern Arizona.
3. Tokop, located in an old gold camp along the Walker Lane in southwestern Nevada.
4. Washington Dome, a carbonate-hosted system located on the edge of the Colorado Plateau in southwestern Utah.

UNO PROJECT, MOHAVE COUNTY, ARIZONA

A Phase 1 exploration program has been completed at Uno. Fourteen reverse circulation holes totalling 2,835 feet were drilled along a one mile strike length of a quartz vein system hosted by Precambrian schists and gneisses.

One of the holes, NU-1, drilled near the north end of the vein, shows 40 feet of .112 opt gold. The gold values correlate with quartz vein material and quartz sericite. Assays from the mineralized zone are shown in the table below.

<u>INTERVAL</u>	<u>OPT AU</u>
140-145	.026
145-150	.505
150-155	.100
155-160	.006
160-165	.012
165-170	.100
170-175	.135
175-180	.014

OR

145-155	10' of	.303
165-175	10' of	.118
145-175	30' of	.143
140-180	40' of	.112

The closest offsets to NU-1 are located 300 feet to the north and about 400 feet to the south. Hole NU-1 bottomed at 185 feet in bad ground (we lost the hole).

TOWNSHIP BUTTE PROJECT, COCHISE COUNTY, ARIZONA

Township Butte is located on the east side of the Pearce gold-silver district and eight miles north of the recent Oneida Resources/Placer Dome gold discovery at Mexican Hat. A 5,000 foot RC drilling program is scheduled to begin on May 07. The targets are:

1. A northwest-southeast trending gold-bearing structure up to 300 feet wide and traceable for more than a mile. Individual veins within the zone show up to .25 opt gold and 16 opt silver.
2. East-west trending vein systems that host the gold-silver mineralization in the Pearce district and can be projected across the Township Butte property.
3. Projected structural intersections between the north-west and east-west structures.

4. Mineralized breccia along the contact between a rhyolite vent and surrounding andesite.

We hope to find mineralized limestone along these fractures and breccia zones underlying an andesite "cap". The veining present in the andesite could be seepage from a bulk carbonate-hosted deposit at depth.

TOKOP PROPERTY, ESMERALDA COUNTY, NEVADA

Tokop is located along the Walker Lane linement about 30 miles north-west of the Bullfrog Mine (1.8 million ounce gold reserve). The Tokop property is a carbonate-hosted system (Carlin-type) that contains jasperoids, gold-bearing veins, evidence of hot spring activity, and adjacent to a granitic stock, mineralized skarn.

There are two areas of jasperoids on the property. Both contain anomalous gold, arsenic, antimony and mercury.

The Cellar Door fault zone extends across the property for one mile and projects under gravel and post mineral volcanic cover. Samples collected along the fault show up to .595 opt gold, indicating that the zone could be a major feeder.

An IP crew will be on site May 8 to search for deep targets in the carbonates and under gravel/volcanic cover.

A 5,000 foot RC drill program is scheduled to begin between the 8th and 12th of May.

WASHINGTON DOME PROPERTY, WASHINGTON COUNTY, UTAH

Washington Dome is located along the Virgin Anticline in the southwest corner of Utah. Recently, the land position was doubled to cover an area of approximately seven square miles.

Washington Dome, an anticlinal structure developed on a major northeast trending structure on the Colorado Plateau, shows anomalous gold (up to .065 opt Au in rock chip samples) along with high values in arsenic, antimony and mercury.

The anomalous metals occur in the Kaibob formation, a limestone/gypsum sequence of Permian age.

The mineralization sequence is exposed along strike for a distance of more than 20,000 feet as it wraps around the dome.

Grid geochemical sampling on both sides of the dome is in progress (over 1600 soil and rock chip samples have been taken to date).

The north grid is 8,800 feet long and the south grid on the opposite flank of the anticline is presently 3,000 feet long and being expanded. Widths are 300-1,000 feet.

The sampling, plotting and evaluation of the geochemical data is incomplete, but it is already apparent that there are at least two large geochemical anomalies. A third anomalous area of yet undetermined size is exposed in a window through the gravels in the northeast nose of the fold where the north and south zones come together.

The zones of anomalous geochemistry correlate with zones of alteration, brecciation and cross structures. One of the cross structures can be traced for more than a mile along strike and appears to be a feeder for two of the large anomalous areas.

Drilling at Washington Dome, Phase 1, is scheduled to begin before May 21 with a 25,000 foot program planned (three drills will be used).

This report has been prepared for Albert W. Applegath, President, by Dr. D.G. Moore, Jr. on behalf of the Board of Directors of High Frontier Resources Ltd., which is solely responsible for its contents. The Vancouver Stock Exchange has neither approved nor disapproved the information contained herein.

HIGH FRONTIER RESOURCES LTD.



Albert W. Applegath
President

PERSONAL NOTE FROM THE PRESIDENT

Your president is 59 years young today. I was born in Toronto, Canada, May 07 1931.

God blessed me with a most wonderful teaching and caring mother, seven beautiful children (five girls and two boys), a great wife, good health, caring and trusting friends and shareholders all over the world.

My 41 year investment career has seen my helping to find and finance seven mines. That, my family and sharing my rewards are my lifes work.

With God's blessing, I look forward to making new friends, new partners and finding new mines. I would repeat here a toast I heard at a birthday party in 1970:

"Here's to today, the tomorrow we worried about yesterday".