



CONTACT INFORMATION

Mining Records Curator
Arizona Geological Survey
1520 West Adams St.
Phoenix, AZ 85007
602-771-1601
<http://www.azgs.az.gov>
inquiries@azgs.az.gov

The following file is part of the

Arizona Department of Mines and Mineral Resources Mining Collection

ACCESS STATEMENT

These digitized collections are accessible for purposes of education and research. We have indicated what we know about copyright and rights of privacy, publicity, or trademark. Due to the nature of archival collections, we are not always able to identify this information. We are eager to hear from any rights owners, so that we may obtain accurate information. Upon request, we will remove material from public view while we address a rights issue.

CONSTRAINTS STATEMENT

The Arizona Geological Survey does not claim to control all rights for all materials in its collection. These rights include, but are not limited to: copyright, privacy rights, and cultural protection rights. The User hereby assumes all responsibility for obtaining any rights to use the material in excess of "fair use."

The Survey makes no intellectual property claims to the products created by individual authors in the manuscript collections, except when the author deeded those rights to the Survey or when those authors were employed by the State of Arizona and created intellectual products as a function of their official duties. The Survey does maintain property rights to the physical and digital representations of the works.

QUALITY STATEMENT

The Arizona Geological Survey is not responsible for the accuracy of the records, information, or opinions that may be contained in the files. The Survey collects, catalogs, and archives data on mineral properties regardless of its views of the veracity or accuracy of those data.

PRINTED: 05-24-2013

ARIZONA DEPARTMENT OF MINES AND MINERAL RESOURCES AZMILS DATA

PRIMARY NAME: SUFFOLK BASALT

ALTERNATE NAMES:

MARICOPA COUNTY MILS NUMBER: 700

LOCATION: TOWNSHIP 7 S RANGE 1 W SECTION 1 QUARTER W2
LATITUDE: N 32DEG 50MIN 48SEC LONGITUDE: W 112DEG 19MIN 09SEC
TOPO MAP NAME: LOST HORSE PEAK - 7.5 MIN

CURRENT STATUS: RAW PROSPECT

COMMODITY:
STONE BASALT/RKWOL

BIBLIOGRAPHY:
ADMMR SUFFOLK BASALT FILE
OCCURRENCE SAMPLED FOR MANUFACTURE ROCK WOOL

02/17/87

ARIZONA DEPARTMENT OF MINES AND MINERAL RESOURCES FILE DATA

PRIMARY NAME: SUFFOLK BASALT

ALTERNATE NAMES:

MARICOPA COUNTY MILS NUMBER: 700

LOCATION: TOWNSHIP 7 S RANGE 1 W SECTION 1 QUARTER --
LATITUDE: N DEG MIN SEC LONGITUDE: W DEG MIN SEC
TOPO MAP NAME: AVOLDALE SE - 7.5 MIN

CURRENT STATUS: RAW PROSPECT

COMMODITY:
STONE BASALT

BIBLIOGRAPHY:
ADMMR SUFFOLK BASALT FILE
ALSO IN SEC 2
OCCURRENCE SAMPLED FOR THE MANUFACTURE OF
ROCK WOOL INSULATION

ARIZONA DEPARTMENT OF MINES AND MINERAL RESOURCES

VERBAL INFORMATION SUMMARY

1. Information from: J. J. Dues, President

Company: Mineral Fibre International Ltd., Inc.

Address: 135 W. Dorothy Lane

Dayton, Ohio 45429

2. Phone: (513) 294-6650 & (513) 299-3397

3. Mine:

4. ADMMR Mine File: SUFFOLK BASALT

5. County: Maricopa

6. Summary of information received, comments, etc.:

Mr. Dues plans to locate a group of claims on this deposit. The basalt has previously been useable for the manufacture of rockwool. Mr. Dues plans to restart and to operate the Casa Grande Rockwool Plant.

Date: January 10, 1989

Ken A. Phillips, Chief Engineer

SUFFOLK BASALT

MARICOPA COUNTY

KAP WR 9/23/83: James E. Bond II reported he is making preparation to obtain a 5 to 10 ton bulk sample of basalt from the Suffolk Basalt Property for a trial run at American Rock Wool's Casa Grande Rock Wool Plant.

KAP WR 9/30/83: James E. Bond reported he has delivered a load of 7-12 tons of sorted, sized basalt from the Suffolk Basalt occurrence to American Rock Wool for a test production run. The material was sorted from a previously shot pile derived from a highway cut. He initially used 2 men to handsort material from the pile. They were able to only recover 250 lbs/hour by sorting about one ton per hour. Mr. Bond had two screens built, 4" and 3/4". Using the screens, a backhoe with one operator and the two men they could recover over 1500 lbs/hour. The bulk sample is awaiting a trial run at the Rock Wool plant in Casa Grande.

KAP WR 11/4/83: Met with Oliver Gould and Del Stacey of American Rock Wool in Casa Grande and traveled to the Suffolk Basalt Deposit where Del Tierra Engineering and Mining Corp. is mining a 250 ton bulk sample. The pit run material is trucked to Pinal Materials where it is crushed and screened before final delivery to American Rock Wool.

KAP WR 9/9/83: [faint text]
KAP WR 12/9/83 : James Bond II reported he has essentially leased the Suffolk Basalt property to Del Tierra Engineering and Mining Corp. Harvey Smith, president, is to pay a royalty of 50 cents per ton to Mr. Bond. A 500 ton bulk sample has been obtained from the deposit and delivered to American Rock Wool at their Casa Grande Rock Wool Plant (file).

KAP WR 3/2/84: A visit was made to Suffolk Basalt occurrence. The property appears to have been idle since a 750 ton bulk sample was mined in the fall of 1983.

KAP WR 6/15/84: James E. Bond III reported that the Suffolk Basalt Deposit Maricopa County is in reality under the control of Harvey Smith. If there is production from the deposit, Mr. Bond is to receive a 50¢/ton royalty.

LAND OWNERSHIP STATUS
SUFFOLK BASALT
OCCURRENCE

35

MINERALS - BLM
SURFACE - BLM

36

MINERALS - BLM
SURFACE - BLM

31

MINERALS - BLM
SURFACE - BLM

MINERALS - BLM
SURFACE - BLM



MINERALS - BLM
SURFACE - BLM

BASALT

2

T. 6 S.

T. 7 S.

R. 1 W.

R. 1 E.

N 1/2 SEC 6

MINERALS - BLM
SURFACE - BLM

6

S 1/2 SEC 6

MINERALS - PRIVATE
SURFACE - PRIVATE

MINERALS - BLM
SURFACE - BLM

11

MINERALS - BLM
SURFACE - BLM

12

N 1/2 NW 1/4
MINERALS - UNK
SURFACE - STATE

MINERALS - BLM
SURFACE - STATE

MINE AND PROSPECT FIELD VISIT DATA SUMMARY

Sheet 1 of 2

MILS #700

→ COMMODITIES BasaltMILS ID No. _____ Date September 29, 1983ENGINEER Ken A. PhillipsINFORMATION FROM: Field visit, lab results, James E. Bond IIPROPERTY SUMMARY→ I. MINE NAME Suffolk Basalt Occurrence OTHER POSSIBLE NAMES _____
INCLUDING ANY CLAIM NAMES NOTED _____II. LOCATION: T 7S R 1W SEC(S) 1 & (maybe 2) MINE DISTRICT _____ELEV. 1840 COUNTY Maricopa TOPO QUAD. Lost Horse Peak 7½DIRECTIONS Located at Freeman Road interchange on Interstate 8.MAP ATTACHED Yes→ III. OWNERSHIP: NAME James E. Bond II PHONE _____

ADDRESS: _____

COMPANY NAME IF ANY: _____

PERTINENT PEOPLE _____

IV. PROPERTY AND HOLDINGS: Unpatented mining claims on BLM mineralsV. PAST PRODUCTION - NOTED, KNOWN, PROBABLE, UNKNOWN, NONE NoneVI. CURRENT STATUS: Bulk sampling in progressVII. WORKINGS: Sample sitesVIII. GEOLOGY AND MINERALOGY: DEPOSIT TYPE: FlowLENGTH: 4500' WIDTH: 1500' VEIN STRIKE _____

HOST ROCK: _____

ECONOMIC MINERALS: Basalt (low melting point, low acid value) for feed to rockwool manufacturing plant.COMMENTS: Material must meet chemical specifications, melting point specifications and size and strength requirements.IX. EQUIPMENT ON SIGHT: None

X. SAMPLING: NOTE TYPE IF ANY, DRILLING? Fifty-pound grab sample for chemical
analysis; see copy of report. Bulk 7-12 ton screened sample for process test
(to be completed October 5, 1983).

XI. REFERENCES AND REMARKS See attached copy of Lost Horse Peak 7½' topo quad
tracing showing land status, and Arizona Testing Lab report dated Sept. 20, 1983.

RECEIVED

SEP 21 1983

DEPT. MINERAL RESOURCES
PHOENIX, ARIZONA

Arizona Testing Laboratories

817 West Madison Street ☐ Phoenix, Arizona 85007 ☐ 602/254-6181

For: American Rockwool Inc.
Attn: Mr. Del Stacy, President
1474 Valley Industriap Park
Casa Grande, Arizona 85222

Date: September 20, 1983

Lab. No.: 2783

Sample: Rocks

Marked: Basalt #1 and #2

Received: 9-15-83

Submitted by: Mr. Ken Phillips

REPORT OF LABORATORY TESTS

9-7-83: *SUFFOLK*
Basalt #1

Basalt #2

Silica	SiO ₂	49.6 %	48.2 %
Alumina	Al ₂ O ₃	20.4	20.4
Iron Oxide	Fe ₂ O ₃	3.8	4.4
Calcium Oxide	CaO	9.8	9.8
Magnesium Oxide	MgO	5.5	5.1
Sodium Oxide	Na ₂ O	3.2	2.9
Potassium Oxide	K ₂ O	1.5	1.1
Titanium Dioxide	TiO ₂	2.7	3.1
Loss on ignition		3.4	4.4

NOT APPLICABLE TO SUFFOLK

cc:

Mr. Ken Phillips
Arizona State Dept.
of Mineral Resources
Mineral Resource Building
Fairgrounds
Phoenix, Arizona 85007

Respectfully submitted,

ARIZONA TESTING LABORATORIES

Claude E McLean Jr

Claude E. McLean, Jr.

SUFFOLK BASALT
MARICOPA COUNTY

MINING CLAIMS

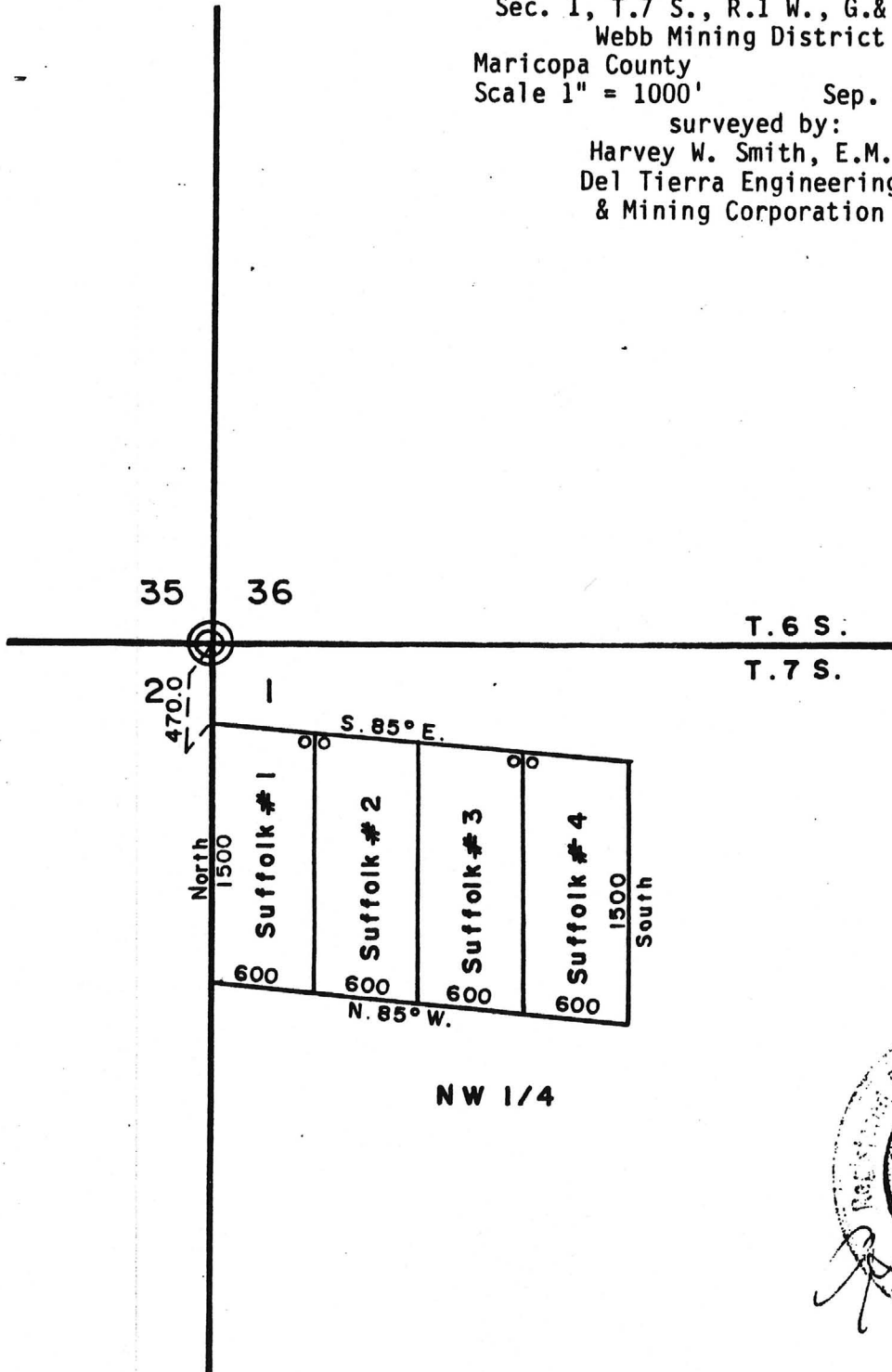
of
James E. Bond II
P. O. Box 948
Welch, WV 24801

known as
SUFFOLK #s 1-4 lodes
situate in

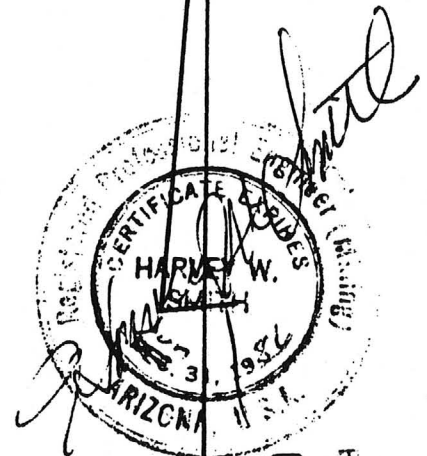
Sec. 1, T.7 S., R.1 W., G.& S.R.M.
Webb Mining District
Maricopa County Arizona
Scale 1" = 1000' Sep. 27, 1983

surveyed by:
Harvey W. Smith, E.M.
Del Tierra Engineering
& Mining Corporation

A MC 207893



NW 1/4



RECEIVED
BLM. AZ STATE OFFICE
OCT 26 2 21 PM '83
PHOENIX, ARIZONA

Note:
o - denotes location monument.

