



## **CONTACT INFORMATION**

Mining Records Curator  
Arizona Geological Survey  
1520 West Adams St.  
Phoenix, AZ 85007  
602-771-1601  
<http://www.azgs.az.gov>  
[inquiries@azgs.az.gov](mailto:inquiries@azgs.az.gov)

The following file is part of the

Arizona Department of Mines and Mineral Resources Mining Collection

## **ACCESS STATEMENT**

These digitized collections are accessible for purposes of education and research. We have indicated what we know about copyright and rights of privacy, publicity, or trademark. Due to the nature of archival collections, we are not always able to identify this information. We are eager to hear from any rights owners, so that we may obtain accurate information. Upon request, we will remove material from public view while we address a rights issue.

## **CONSTRAINTS STATEMENT**

The Arizona Geological Survey does not claim to control all rights for all materials in its collection. These rights include, but are not limited to: copyright, privacy rights, and cultural protection rights. The User hereby assumes all responsibility for obtaining any rights to use the material in excess of "fair use."

The Survey makes no intellectual property claims to the products created by individual authors in the manuscript collections, except when the author deeded those rights to the Survey or when those authors were employed by the State of Arizona and created intellectual products as a function of their official duties. The Survey does maintain property rights to the physical and digital representations of the works.

## **QUALITY STATEMENT**

The Arizona Geological Survey is not responsible for the accuracy of the records, information, or opinions that may be contained in the files. The Survey collects, catalogs, and archives data on mineral properties regardless of its views of the veracity or accuracy of those data.

PRINTED: 08/16/2002

ARIZONA DEPARTMENT OF MINES AND MINERAL RESOURCES AZMILS DATA

PRIMARY NAME: STUTENROTH MILL

ALTERNATE NAMES:

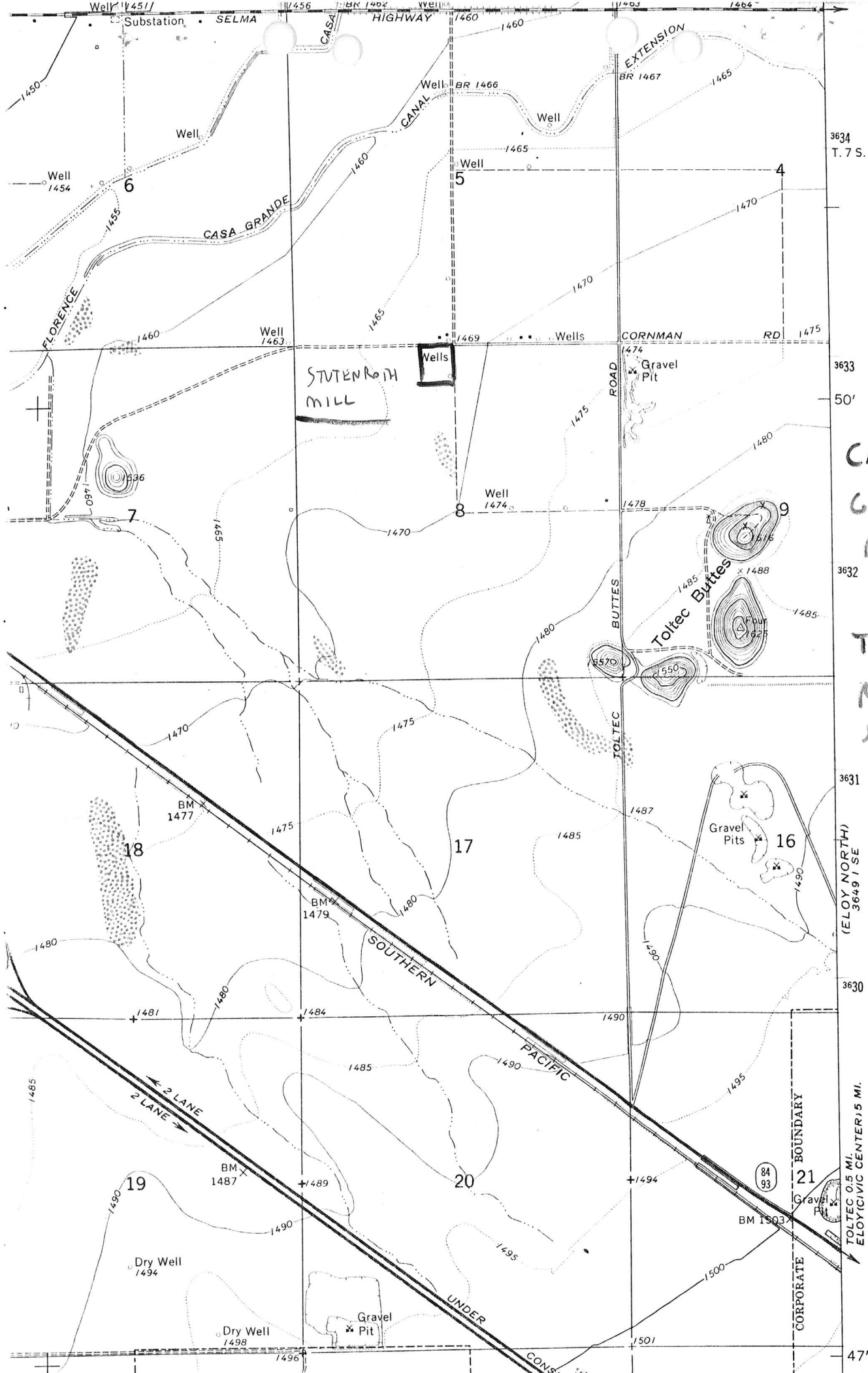
PINAL COUNTY MILS NUMBER: 745

LOCATION: TOWNSHIP 7 S RANGE 7 E SECTION 8 QUARTER NW  
LATITUDE: N 32DEG 50MIN 06SEC LONGITUDE: W 111DEG 38MIN 14SEC  
TOPO MAP NAME: CASA GRANDE MTS - 7.5 MIN

CURRENT STATUS: PRODUCER

COMMODITY:  
MILL GRAVITY

BIBLIOGRAPHY:  
ADMMR STUTENROTH MILL FILE



CASA  
GRANDE  
MT 7.5

T75  
A7E  
Sec 8 NW

(ELOY NORTH)  
3649 1/4 SE

TOLTEC 0.5 MI.  
ELOY CENTER 1/4 SE

ABSTRACTED FROM ADMMR ACTIVE MINES DIRECTORY, 1992

*Penal County*

**STUTENROTH MILLING & MANUFACTURING**

**Stutenroth Mill** T7S R7E Sec. 8

7611 W. Cornman Road, Casa Grande, AZ 85222 - Phone 836-5568 - Employees: 2 - Custom gravity mill - 50 TPD capacity - All types of ore - Located eight miles southeast of Casa Grande.

Owner-Operator Archie Stutenroth

ABSTRACTED FROM ADMMR ACTIVE MINES DIRECTORY, 1991

**STUTENROTH MILLING**

**Stutenroth Mill** T7S R7E Sec. 8

7611 W. Cornman Road, Casa Grande, AZ 85222 - Phone 836-5568 - Employees:  
2 - Custom gravity mill - 50 TPD capacity - All types of ore - Located  
eight miles southeast of Casa Grande.

Owner-Operator ..... Archie Stutenroth

ABSTRACTED FROM ADMMR ACTIVE MINES DIRECTORY, 1990

**STUTENROTH MILLING**

**Stutenroth Mill** T7S R7E Sec. 8

7611 W. Cornman Road, Casa Grande, AZ 85222 - Phone 836-5568 - Employees:  
2 - Custom gravity mill - 50 TPD capacity - All types of ore - Located  
eight miles southeast of Casa Grande.

Owner-Operator ..... Archie Stutenroth

ABSTRACTED FROM ADMMR ACTIVE MINES DIRECTORY, 1989

**STUTENROTH MILLING**

T7S R7E Sec. 8  
Rt. 4, Box 71D, Casa Grande 85222 - Phone 836-5568 - Employees 2 - Custom  
gravity mill - 50 TPD capacity -all types of ore - Located eight miles  
southeast of Casa Grande.

Owner-Operator ..... Archie Stutenroth

ABSTRACTED FROM ADMMR ACTIVE MINES DIRECTORY, 1988

**STUTENROTH MILLING**

T7S R7E Sec. 8

Rt. 4, Box 71D, Casa Grande 85222 - Phone 836-5568 - Employees 2 - Custom gravity mill - 50 TPD all types of ore - Located eight miles southeast of Casa Grande.



## STUTENROTH MILL

KAP WR 12/5/86: A visit ws made to Stutenroth Milling. The mill is still active Work and business is about equally divided between custom milling and equipment manufacturing. All of the milling has been small test batches.

-----

Do Not Reproduce

STUTENROTH MILL

PINAL

(Also called Big Banana Mill at one time)

Rt. 1 Box 71D  
Casa Grande, Arizona 85222  
Ph: 836-5568

Archie Stutenroth, Owner

RRB WR 4/3/80 Called Archie Stutenroth (836-3138) in Casa Grande about his advertisement in the Gazette. He has a crusher, impact mill and Wilfley table that he has been using to concentrate tungsten ore (scheelite) from the Big Banana. He is thinking about using it to concentrate gold ore on a custom basis. I will visit him and get more information as soon as he is available.

---

RRB: WR 4/25/80 Went to see ARchie Stutenroth when I got back to Casa Grande. He has a crusher, pulverizer and table set up to run sheelite from the Big Banana Mine on the Papago Reservation in Pima County. He will run small lots of ore for a flat fee to set up and then at a flat rate per ton.

---

RRB WR 11/6/81 Bill Baker, Arivaca, Arizona reported that Archie Stutenroth is busy running tests on gold ores from all over the west at his mill in Casa Grande.

---

KAP WR 1/15/82: A visit was made to the Stutenroth Mill in Pinal County. A separate report has been written.

---

NJN WR 6/17/83: With Ken Phillips a visit was made to Stutenroth Mill, Pinal County. The mill is basically as described in the file reports. Mr. Stutenroth reported that sales of the impact mill he manufactures have been very good.

---

KAP WR 6/17/83: In the company of Nyal Niemuth a visit was made to Stutenroth's Mill near Casa Grande. Archie Stutenroth is continuing to run his gravity mill on a custom bases. Further he is continuing to manufacture his impact mills.

---

NJN WR 12/13/85: Archie Stutenroth visted and reported his custom mill business has been quite good (Stutenroth Mill file). He is planning on installing a larger impact mill and two tables soon so he can process 3-4 tons per hour. This would more than double his current capacity of 1.5 tons per hour.

---

**DEPARTMENT OF MINERAL RESOURCES**

**STATE OF ARIZONA  
FIELD ENGINEERS REPORT**

Mine Stutenroth Mill

Date January 12, 1982

District Pinal

Engineer Ken A. Phillips

Subject: Visit to Stutenroth Mill on above date

On the above date a visit was made to the Stutenroth Mill. The plant is a reduction mill coupled with simple gravity beneficiation using tables.

The current circuit (changed slightly from the September 5, 1980 visit by Richard R. Beard) is as follows:

- Coarse ore bin
- 9" x 16" Eagle Jaw Crusher (-1¼" discharge)
- Conveyor
- 18" x 24" rolls (set at 3/8")
- Conveyor
- Stutenroth Impactor (run wet)
- Rotating discharge screen
- Wilfley Table
- Tailings launder
- Concentrate settling bucket

Mr. Stutenroth reports the table to operate most effectively at about 1¼ tons/hour.

The impact grinder is designed and constructed by Archie Stutenroth. He feels the impactor gives proper liberation of the economic mineral particles at a larger size. The Wilfley Table has a "Hungarian Surface" (planed down, grooved wood). The table is lowest capacity unit of the circuit.

cc: Tucson office

*Abstracted mfw*

DEPARTMENT OF MINERAL RESOURCES

STATE OF ARIZONA

FIELD ENGINEERS REPORT

*File: Big Banana Mine, Pima Co.*

Mine      ☒ BIG BANANA MILL (Stutenroth Mill)      Date      September 5, 1980  
District      Casa Grande (Pinal County)      Engineer      Richard R. Beard *RRB*  
Subject:      Visit

At the invitation of Archie Stutenroth, owner, the author visited the Big Banana Mill on Cornman Road, approximately eight miles southeast of Casa Grande, while it was in operation. It is an efficient, well designed gravity mill that Mr. Stutenroth built and/or assembled himself, capable of treating approximately one (1) ton per hour.

At the time of my visit he was running tungsten ore and said the concentrate was 68%  $WO_3$ , the midlings 28%  $WO_3$ , and that he was getting 85% recovery.

The principal components of the mill are:

6" X 9" Jaw Crusher

6"Ø X 9" Rolls - set at 1/4"

Impact with rotating screen classifier designed and built by the owner

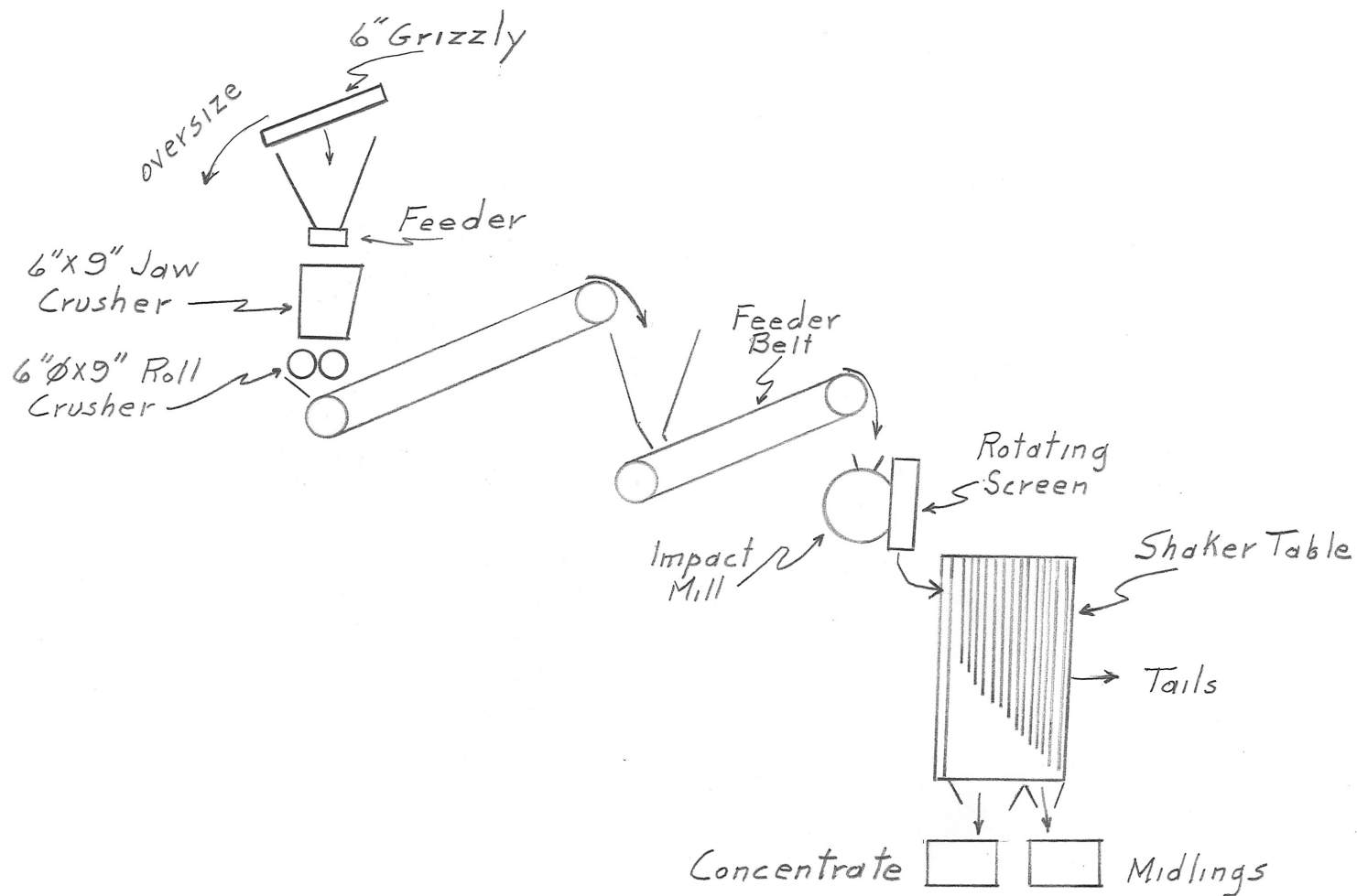
5' X 15.5' Shaker Table

Mr. Stutenroth will do custom milling on any ore amenable to gravity concentration on a fee basis as time permits.

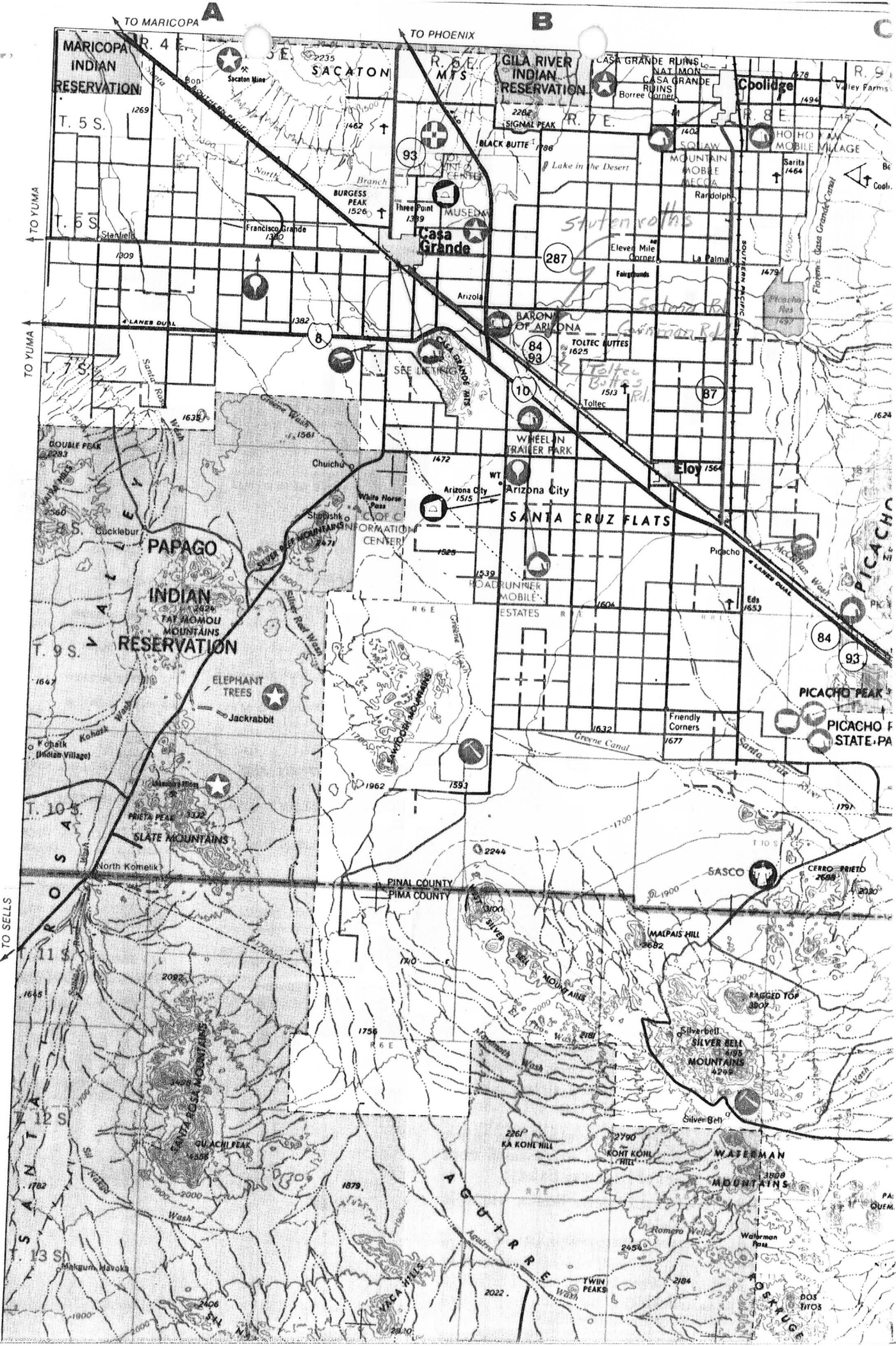
RRB:mw

cc: DMR Tucson

# BIG BANANA MILL



RRB  
9/5/80





1

2

3

