



CONTACT INFORMATION

Mining Records Curator
Arizona Geological Survey
1520 West Adams St.
Phoenix, AZ 85007
602-771-1601
<http://www.azgs.az.gov>
inquiries@azgs.az.gov

The following file is part of the

Arizona Department of Mines and Mineral Resources Mining Collection

ACCESS STATEMENT

These digitized collections are accessible for purposes of education and research. We have indicated what we know about copyright and rights of privacy, publicity, or trademark. Due to the nature of archival collections, we are not always able to identify this information. We are eager to hear from any rights owners, so that we may obtain accurate information. Upon request, we will remove material from public view while we address a rights issue.

CONSTRAINTS STATEMENT

The Arizona Geological Survey does not claim to control all rights for all materials in its collection. These rights include, but are not limited to: copyright, privacy rights, and cultural protection rights. The User hereby assumes all responsibility for obtaining any rights to use the material in excess of "fair use."

The Survey makes no intellectual property claims to the products created by individual authors in the manuscript collections, except when the author deeded those rights to the Survey or when those authors were employed by the State of Arizona and created intellectual products as a function of their official duties. The Survey does maintain property rights to the physical and digital representations of the works.

QUALITY STATEMENT

The Arizona Geological Survey is not responsible for the accuracy of the records, information, or opinions that may be contained in the files. The Survey collects, catalogs, and archives data on mineral properties regardless of its views of the veracity or accuracy of those data.

02/19/88

ARIZONA DEPARTMENT OF MINES AND MINERAL RESOURCES FILE DATA

PRIMARY NAME: STEVENS QUARTZ CRYSTAL

ALTERNATE NAMES:

SANTA CRUZ COUNTY MILS NUMBER: 246

LOCATION: TOWNSHIP 21 S RANGE 16 E SECTION 32 QUARTER W2
LATITUDE: N 31DEG 37MIN SEC LONGITUDE: W 110DEG 37MIN SEC
TOPO MAP NAME: MT. HUGHES - 7.5 MIN

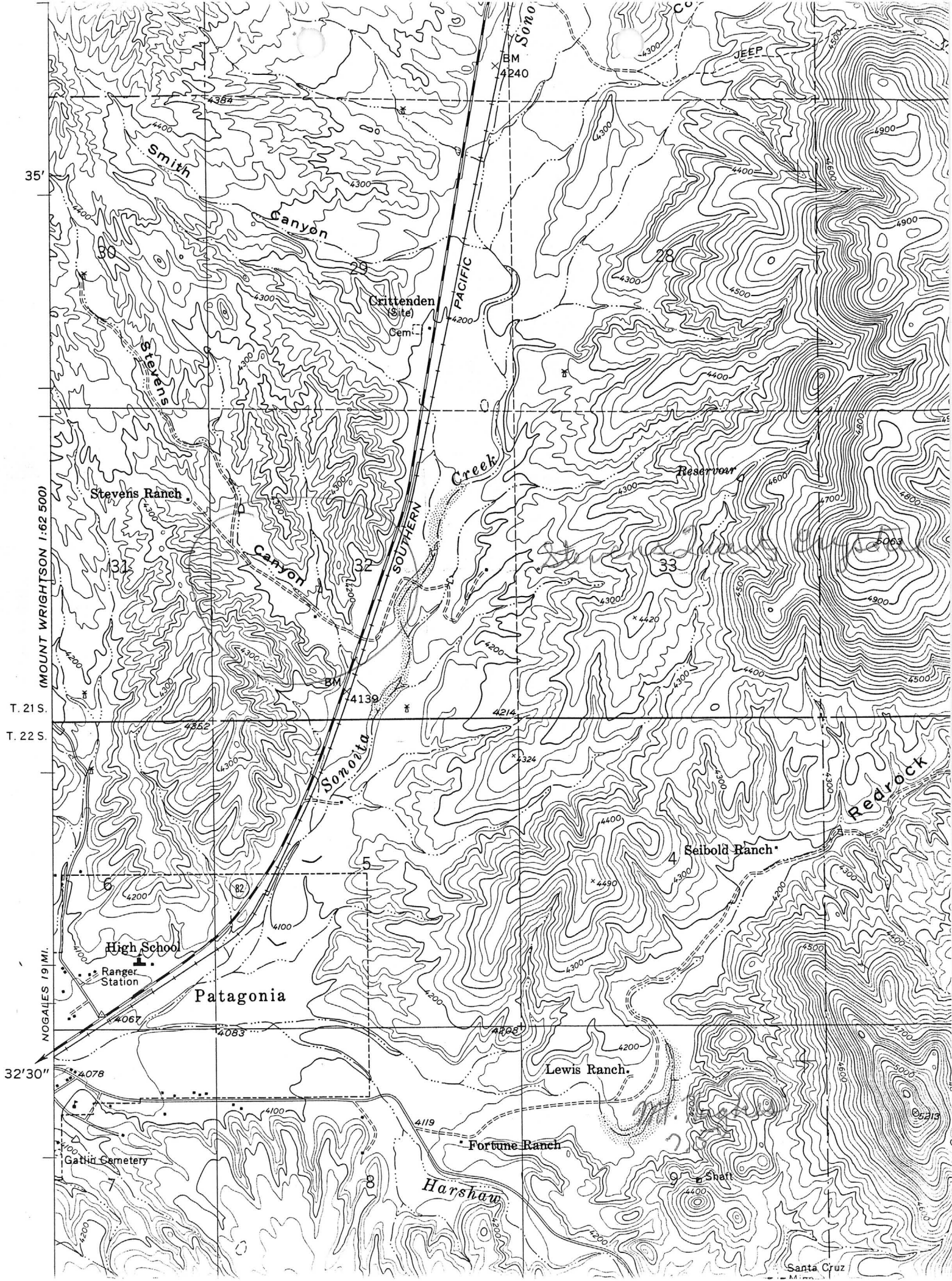
CURRENT STATUS: EXP PROSPECT

COMMODITY:

QUARTZ ROCK CRYSTAL
GEMSTONE QUARTZ

BIBLIOGRAPHY:

ADMMR STEVENS QUARTZ CRYSTAL FILE



STEVENS QUARTZ CRYSTAL

SANTA CRUZ COUNTY

KAP WR 12/25/87: Joe Mayba (no permanent address) reported he has found some specimen or possibly gem quality quartz crystals in the W $\frac{1}{2}$, Sec 32, T21S R16E Santa Cruz County. He explained that he found the crystals in the slopes along Stevens Canyon on the way to Stevens Ranch. A quick check of the land status for him indicated that the land is probably private minerals and surface. He said the crystals were clear and he has sold all he found. He had hopes of staking a claim. He was told how to determine the owner and then to try to make a deal with the owner.
