



CONTACT INFORMATION

Mining Records Curator
Arizona Geological Survey
1520 West Adams St.
Phoenix, AZ 85007
602-771-1601
<http://www.azgs.az.gov>
inquiries@azgs.az.gov

The following file is part of the

Arizona Department of Mines and Mineral Resources Mining Collection

ACCESS STATEMENT

These digitized collections are accessible for purposes of education and research. We have indicated what we know about copyright and rights of privacy, publicity, or trademark. Due to the nature of archival collections, we are not always able to identify this information. We are eager to hear from any rights owners, so that we may obtain accurate information. Upon request, we will remove material from public view while we address a rights issue.

CONSTRAINTS STATEMENT

The Arizona Geological Survey does not claim to control all rights for all materials in its collection. These rights include, but are not limited to: copyright, privacy rights, and cultural protection rights. The User hereby assumes all responsibility for obtaining any rights to use the material in excess of "fair use."

The Survey makes no intellectual property claims to the products created by individual authors in the manuscript collections, except when the author deeded those rights to the Survey or when those authors were employed by the State of Arizona and created intellectual products as a function of their official duties. The Survey does maintain property rights to the physical and digital representations of the works.

QUALITY STATEMENT

The Arizona Geological Survey is not responsible for the accuracy of the records, information, or opinions that may be contained in the files. The Survey collects, catalogs, and archives data on mineral properties regardless of its views of the veracity or accuracy of those data.

02/20/87

ARIZONA DEPARTMENT OF MINES AND MINERAL RESOURCES FILE DATA

PRIMARY NAME: SOUTHDOWN BASALT

ALTERNATE NAMES:

PINAL COUNTY MILS NUMBER: 728

LOCATION: TOWNSHIP 7 S RANGE 2 E SECTION 7 QUARTER E2
LATITUDE: N DEG MIN SEC LONGITUDE: W DEG MIN SEC
TOPO MAP NAME: ANTELOPE PEAK - 15 MIN

CURRENT STATUS: PAST PRODUCER

COMMODITY:
STONE BASALT/RKWOL

BIBLIOGRAPHY:
ADMMR SOUTHDOWN BASALT FILE


ARIZONA DEPARTMENT OF MINES AND MINERAL RESOURCES

VERBAL INFORMATION SUMMARY

1. Information from: Reliable Source
2. Address:
3. Phone:
4. Mine or property name: Southdown Basalt
5. ADMMR Mine file: Southdown Basalt
6. County: Pinal
7. MILS number: Pinal 728
8. Operations Status: Past Producer
9. Summary of information received, comments, etc:

Information was received that Joe J. Dues had let the claims on the Southdown Basalt deposit lapse, but wants to reestablish them. He apparently still hopes to revitalize the Casa Grande Rock Wool Plant.

Date: 4/15/91

Ken A. Phillips 

ARIZONA DEPARTMENT OF MINES AND MINERAL RESOURCES

VERBAL INFORMATION SUMMARY

1. Information from: J. J. Dues, President

Company: Mineral Fibre International Ltd. Inc.

Address: 135 W. Dorothy Lane

Dayton, Ohio 45429

2. Phone: (513) 294-6650 home (513) 299-3397

3. Mine:

4. ADMMR Mine File: SOUTHDOWN BASALT

5. County: Pinal

6. Summary of information received, comments, etc.:

Mr. Dues is locating new claims on their deposit. The claims will be the ARW-1 through ARW-20. He plans to restart the Casa Grande Rockwool plant and use the basalt from this deposit. ARW GROUP should be an alternate name for the occurrence. Maps of the previous locations were provided for the file.

Date: January 10, 1989

Ken A. Phillips, Chief Engineer

SOUTHDOWN BASALT

PINAL COUNTY

KAP WR 10/15/85: The ARW Quarry (Southdown Basalt - file) Pinal County, operated by American Rockwool was added to the 1985 Directory of Active Mines for the first time.

KAP WR 8/14/87: Discussed gold in basalt with Dave Baskin, Supervisor of the Mineral Land Assessment (MLA) section of the U.S. Bureau of Mines in Denver, Colorado. The open file MLA on the Table Top Mountain Wilderness Study Area of Maricopa and Pinal Counties contains the results of assays on a sample of basalt from the quarry operated by America Rock Wool (Southdown Basalt - file) Pinal County, for feed for their rock wool plant in Casa Grande. The results show the basalt to contain anomalous amounts of copper and zinc and a nearly economic quantity of gold of approximately 0.024 tr. oz/ton. Mr. Baskin said he would obtain the pulp from the sample and have it rerun at a commercial assay laboratory (Bonder-Clegg) in Denver. The original result was obtained by the Bureau's laboratory in Reno. I also offered to obtain additional samples from the Southdown deposit as well as other basalt occurrences which had previously had anomalous amounts of copper and zinc reported.

KAP WR 9/4/87: Dave Baskin, U.S. Bureau of Mines, Denver, reported that the split of the assay pulp from the Southdown Basalt sample sent to Bonder-Clegg ran less than 0.002 tr. oz./ton in gold. Other basalt samples will still be analyzed.

KAP WR 4/22/88: Dennis Johnson, Casa Grande (836-8514) who reports himself as being with American Rockwool called for information on the status of the ARW claims on the Southdown Basalt Deposit (file) Pinal County. He wants to acquire the deposit in the possibility that the Casa Grande Rockwool Plant (file) Pinal County may again be operated. He explained that the industrial property, plant and rockwool manufacturing equipment is under option from Del Webb Corporation to an individual who hopes to operate the plant. Johnson was cautioned about the bad name the previous operators had made for themselves and the plant and the uphill battle they will face in trying to reopen the plant. According to the BLM microfiche the ARW 1-20 claims became void on September 1, 1986 for failure to file an affidavit of labor. Later placer claims located on the same ground by others have subsequently also become void for the same reason. If the plant could again be successfully and acceptably operated it would be a valuable addition to the local economy.

SOUTHDOWN BASALT

PINAL COUNTY
T7S R2E Sec 7

KAP WR 9/9/83: In the company of James E. Bond a visit was made to a basalt occurrence to be known as the Southdown Basalt Occurrence. A sample was collected for complete chemical analysis. A separate report will be written.

KAP WR 11/4/83: In the company of Oliver Gould and Del Stacey a visit was made to the Southdown Basalt Occurrence in the east central portion of Sec 7 T7S R2E. Numerous grab samples of basalt were collected. The samples were then melted as a preliminary step in determining their usefulness in manufacturing rock wool insulation.

KAP WR 3/2/84: Traveled to the Southdown Basalt occurrence. This basalt deposit is believed to be held by American Rockwool. No work appears to have been done since initial tests were completed in the fall of 1983.

KAP WR 8/10/84: A visit was made to the Southdown Basalt (file) deposit in Secs. 7 & 8, T7S R2E in Pinal County. American Rockwool, 1474 VIP Blvd., Casa Grande, Arizona 85222 has located 20 claims on the deposit - the ARW #1-#20. A test lot of about 250 tons was mined for use in production rockwool insulation.

KAP WR 10/12/84: Dennis Johnson of American Rock Wool, Casa Grande, reported that they have started production of basalt from their ARW Claim at the Southdown Basalt Occurrence (file). Mining is being done by a local contractor, Harlow Jones. The property was visited where a blasting crew was loading 250 drill holes, each 10 feet deep, spaced 5 X 10 feet with 100 pounds of ANFO and a primer. The shot was being tied in with det cord and inline delays. The close spacing and shallow holes was designed so to break a single shallow flow of basalt and to limit the necessity of secondary blasting.

KAP WR 7/19/85: Contacted Dennis Johnson at American Rock Wool (Casa Grande Rockwool Plant - file) Pinal County about their current sources of materials. They are continuing to mine basalt at the Southdown Basalt Deposit - file, along I-8. They call the quarry their Table Top Quarry. It is mined intermittently by a contractor who delivers a 4-8 weeks supply to the rockwool plant as needed. They still need an Arizona source of high calcium, low silica and iron and low melting temperature rock to replace the steel mill slag they are buying from site of the old Kaiser Steel Mill at Fontana, California.

To: John H. Jett, Director
From: Ken A. Phillips, Chief Engineer
Subject: Current status of basalt mining activities for American
Rock Wool
ADMMR File: Casa Grande Rockwool Plant(file), Pinal County and
Southdown Basalt Deposit(file), Pinal County

Contacted Dennis Johnson at American Rock Wool {Casa Grande Rockwool Plant(file) Pinal County} about their current sources of materials. They are continuing to mine basalt at the Southdown Basalt Deposit(file) along I-8. They call the quarry their Table Top Quarry. It is mined intermittently by a contractor who delivers a 4 -8 weeks supply to the rockwool plant as needed. they still need an Arizona source of high calcium, low silica, low iron and low melting temperature rock to replace the steel mill slag they are buying from site of the old Kaiser Steel Mill at Fontana, California.

July 22, 1985

MAP

One inch = One thousand feet

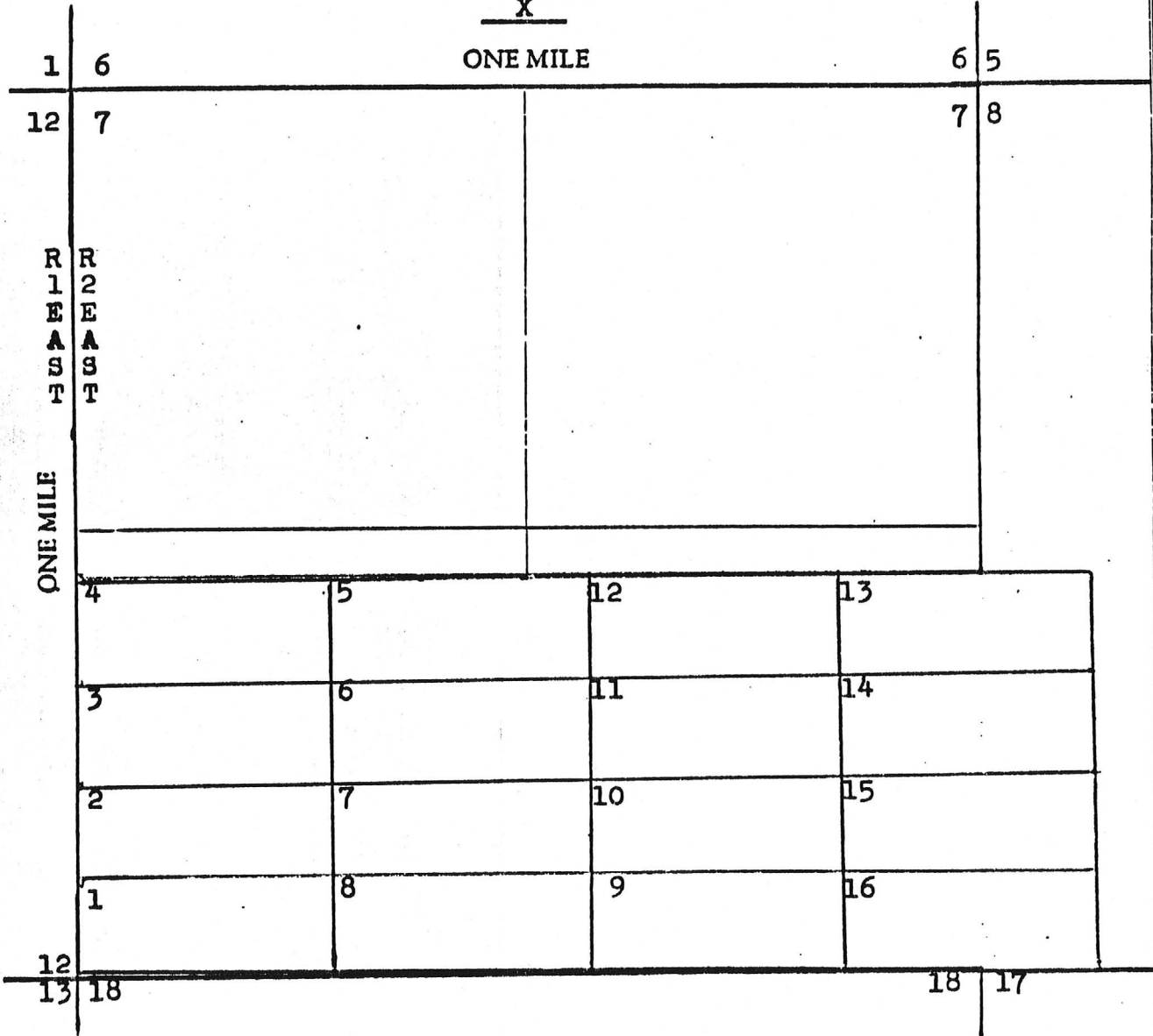
ARW 1 thru 16

North Arrow



MASTER PLAT

X
X
X



Section 7-8 Range 2E Township 7S G&SRB&M

Richard Brewer

Date 5/10/84

RECEIVED
JUL 10 PM 2 12
PHOENIX, ARIZONA
U.S. ARMY
STATE OFFICE

Wm Richard Brewer
Signature



OCT 09 1984

Office of State Mine Inspector

705 West Wing, Capitol Building
Phoenix, Arizona 85007
602-255-5971

SOUTHDOWN BASALT (F)

ADD TO PINA W. MIN

TJS R2E Sec 7

CNO FOR ARW

NOTICE TO ARIZONA STATE MINE INSPECTOR

In compliance with Arizona Revised Statute Section 27-303*, we are submitting this written notice to the Arizona State Mine Inspector (705 West Wing, Capitol Building, Phoenix, Arizona 85007) of our intent to start stop (please circle one) a mining operation.

H.L. JONES CO

COMPANY NAME

AMERICAN ROCK WOOL

CHIEF OFFICER

Del STACY

COMPANY ADDRESS

1474 VIP BLVD CASA GRANDE, AZ

COMPANY TELEPHONE NUMBER

836-369985222

MINE OR PLANT NAME

ARW

MINE OR PLANT LOCATION (including county and nearest town, as well as directions for locating by vehicle)

4 miles West of Hidden Valley on
Highway 8 To MARICOPA - (PINAL)
County line - 1 mile Southeast To Quarry

TYPE OF OPERATION

Open Pit

PRINCIPAL PRODUCT

TRAP ROCK

STARTING DATE

OCT 1984

CLOSING DATE

UNKNOWN

DURATION OF OPERATION

EST 10 years

PERSON SENDING THIS NOTICE

Del STACY

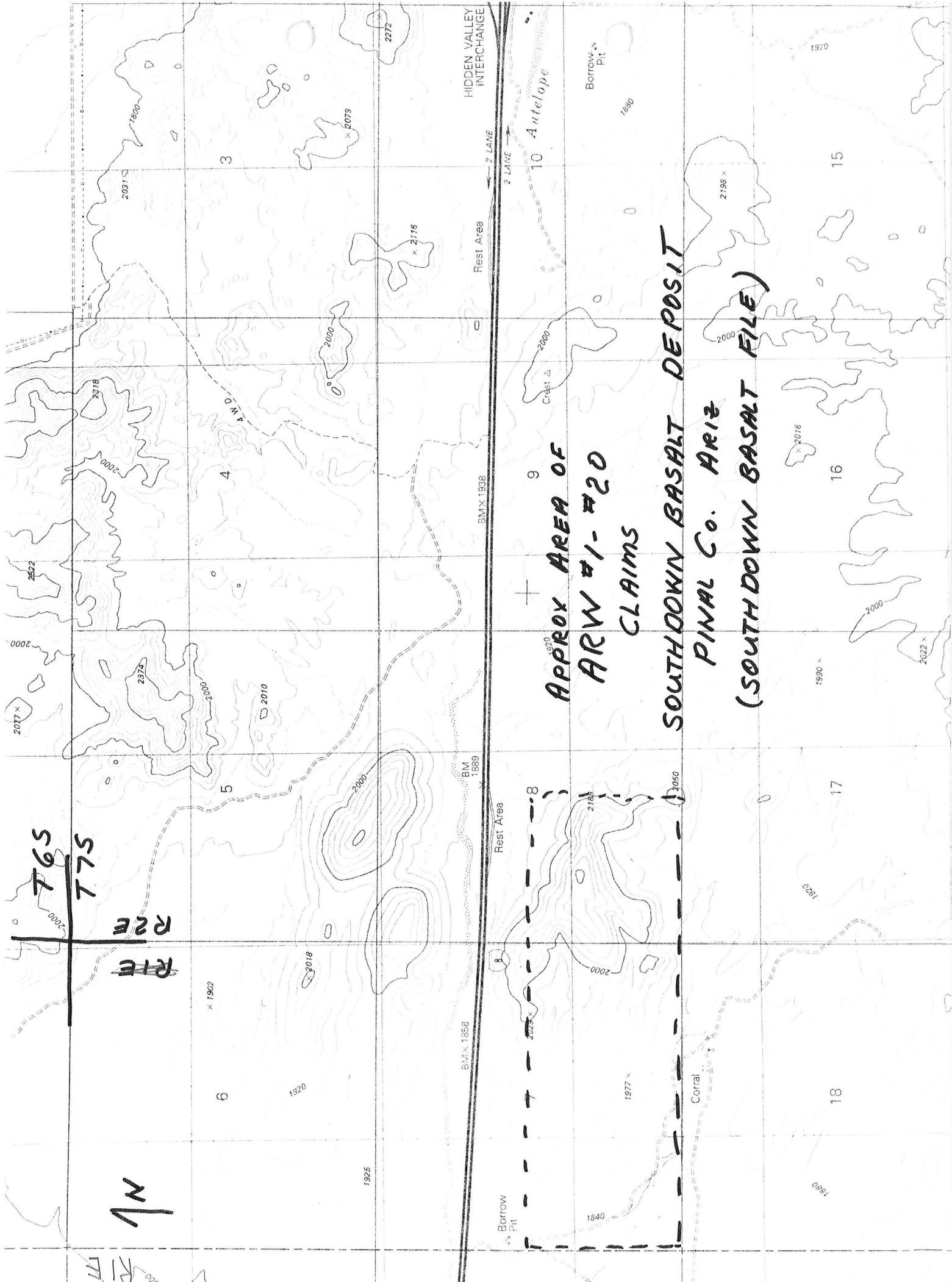
TITLE OF PERSON SENDING THIS NOTICE

PRESIDENT

DATE NOTICE SENT TO STATE MINE INSPECTOR

10-5-84

*A.R.S. Section 27-303 NOTIFICATION TO INSPECTOR OF BEGINNING OR SUSPENDING OPERATIONS: When mining operations are commenced in any mine or when operations therein are permanently suspended, the operator shall give written notice to the inspector at his office prior to commencement or suspension of operations.



APPROX AREA OF
ARW #1-#20
CLAIMS

SOUTHDOWN BASALT DEPOSIT
PINAL CO. ARIZ
(SOUTHDOWN BASALT FILE)

TGS
T7S

R2E
R1E

1/4 N