



CONTACT INFORMATION

Mining Records Curator
Arizona Geological Survey
1520 West Adams St.
Phoenix, AZ 85007
602-771-1601
<http://www.azgs.az.gov>
inquiries@azgs.az.gov

The following file is part of the

Arizona Department of Mines and Mineral Resources Mining Collection

ACCESS STATEMENT

These digitized collections are accessible for purposes of education and research. We have indicated what we know about copyright and rights of privacy, publicity, or trademark. Due to the nature of archival collections, we are not always able to identify this information. We are eager to hear from any rights owners, so that we may obtain accurate information. Upon request, we will remove material from public view while we address a rights issue.

CONSTRAINTS STATEMENT

The Arizona Geological Survey does not claim to control all rights for all materials in its collection. These rights include, but are not limited to: copyright, privacy rights, and cultural protection rights. The User hereby assumes all responsibility for obtaining any rights to use the material in excess of "fair use."

The Survey makes no intellectual property claims to the products created by individual authors in the manuscript collections, except when the author deeded those rights to the Survey or when those authors were employed by the State of Arizona and created intellectual products as a function of their official duties. The Survey does maintain property rights to the physical and digital representations of the works.

QUALITY STATEMENT

The Arizona Geological Survey is not responsible for the accuracy of the records, information, or opinions that may be contained in the files. The Survey collects, catalogs, and archives data on mineral properties regardless of its views of the veracity or accuracy of those data.

PRINTED: 10-10-2012

ARIZONA DEPARTMENT OF MINES AND MINERAL RESOURCES AZMILS DATA

PRIMARY NAME: S.O.B. CLAIMS

ALTERNATE NAMES:

PINAL COUNTY MILS NUMBER: 800

LOCATION: TOWNSHIP 1 N RANGE 12 E SECTION 35 QUARTER SW
LATITUDE: N 33DEG 22MIN 54SEC LONGITUDE: W 111DEG 06MIN 38SEC
TOPO MAP NAME: HAUNTED CANYON - 7.5 MIN

CURRENT STATUS: UNK

COMMODITY:
COPPER

BIBLIOGRAPHY:
ADMMR S.O.B. CLAIMS FILE

N O T E S

April 22, 1971

J. E. K.

MAY 13 1971

John Kinnison recording:

I have spent a few hours on the ground on Jay Fuller's property--the S.O.B. Group--which claims overly an altered area in pre-Cambrian schist. The capping suggests derivation from pyrite, mainly along fractures--perhaps 1% to 3%. Sulphide content is generally spotty. I am not sure about the configuration of the zone on its southeasterly end, but striking northwesterly across Woodcamp Canyon near the Rockhouse, it is pretty much as the map by Holt, Inc., shows ~~it to be on~~ ^{to be on that} the limits ~~of the~~ side. Continuing northwesterly up a slope criss-crossed by a road with many switchbacks, reaching up over the top of the ^{is} path, the zone seems to fade out into stringers about a mile or a mile and a half northwest of the Rockhouse. On the northwestern edge, however, the last roadcut I examined contained a granitic rock locally strongly altered to sericite, mainly along fractures. Some indigenous limonite, probably after copper sulphides. Some similarity to the capping here with that over the Esperanza deposit. Geochem sample marked Number 1 is from the altered granite. Geochem sample Number 2 from about 200 feet away in much fresher granite. Down in Woodcamp Canyon, by or perhaps southwest ^{from} ~~rather~~ of the Rockhouse, ~~a bearing~~ ^{to} a dark red-brown zone beneath probable dacite on the bluffs to the northeast is on a bearing N 67° E from Woodcamp Canyon. The stream bed at this point shows a porphyritic rock ^(as float) with some sulphides on stringers and some black limonite lining cavities. Sample of this is geochem Number 3, and a sample of the iron staining and iron deposit in the creek bottom itself is geochem Number 4. Over-all the Fuller zone appears quite pyritic with little evidence of copper at the surface.

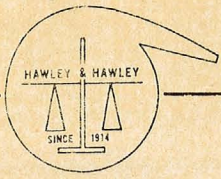
I did not get up to the prominent red knoll south of the Rockhouse, but this certainly appears pyritic from the distance. North of Woodcamp Canyon on

the northwesterly extension of the zone the pyrite content is perhaps 3% or 4% in schist. In the vicinity of Woodcamp Canyon it is less, maybe about 2%.

The above-designated geochemical samples Numbers 1, 2, 3, and 4 have been entered in my sequential number and should be respectively Numbers 2096, 2097, 2098, and 2099.

JEK/bl
5-12-71

Rock house



Registered Assayers
OVER 50 YEARS

HAWLEY & HAWLEY

ASSAYERS AND CHEMISTS, INC.
BOX 50106 1700 W. GRANT RD.,
TUCSON, ARIZONA 85703 (602) 622-4836

BRANCHES

Douglas
Hayden
Morenci
Inspiration
El Paso
St. Louis

IDENTIFICATION	Gold OPT	Silver OPT	Lead %	Copper %	Zinc %	Mo. %			
2096				31		< 2			
2097				13		< 2			
2098				11		< 2			
2099				171		< 2			
2001				30		< 2			
2004				141		< 2			
2005				34		< 2			
2007				7		< 2			

J. E. K.

MAY 3 1971

RECEIVED
MAY 3 1971

TUCSON
KAISER EXPLORATION & MINING CO.

CC: Kaiser Exploration & Mining Co.
ADD: 1700 W. Grant Road
CITY: Tucson, Arizona 85703
ADD: 1700 W. Grant Road
CITY: Tucson, Arizona 85703

REMARKS:
Trace analysis

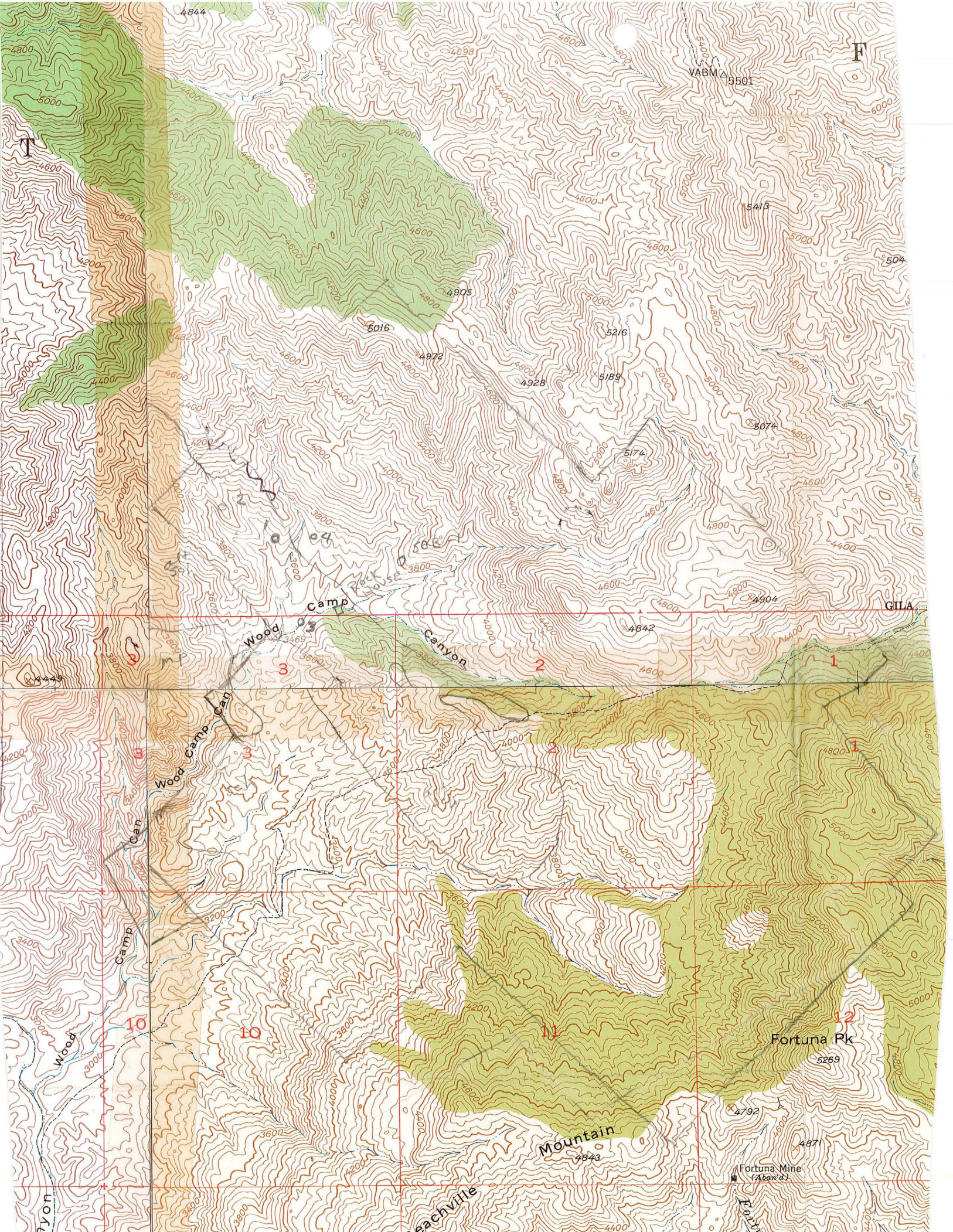
Analysis Cert. By _____

ACC: Kaiser Exploration & Mining Co.

Date Spl. Received _____

Date Compl. _____

Preparation \$ _____
Analysis \$ _____



Rock House -

MCK 1-7 holes

1 deep hole

MCK 1 $\frac{1}{2}$ ~~2~~ N W of Rock H

on low flank SW hill

1 - Sch < .1 to 500'

500' - 896 1 - .3 % in granitic
or diorite.

2 - Sch - 160' < .05

QM - 763 < .1

Dior - 763 - 932 .1 - .25

add to mile

Let Casey know
a₃ mile # when
when assigned