



CONTACT INFORMATION

Mining Records Curator
Arizona Geological Survey
1520 West Adams St.
Phoenix, AZ 85007
602-771-1601
<http://www.azgs.az.gov>
inquiries@azgs.az.gov

The following file is part of the

Arizona Department of Mines and Mineral Resources Mining Collection

ACCESS STATEMENT

These digitized collections are accessible for purposes of education and research. We have indicated what we know about copyright and rights of privacy, publicity, or trademark. Due to the nature of archival collections, we are not always able to identify this information. We are eager to hear from any rights owners, so that we may obtain accurate information. Upon request, we will remove material from public view while we address a rights issue.

CONSTRAINTS STATEMENT

The Arizona Geological Survey does not claim to control all rights for all materials in its collection. These rights include, but are not limited to: copyright, privacy rights, and cultural protection rights. The User hereby assumes all responsibility for obtaining any rights to use the material in excess of "fair use."

The Survey makes no intellectual property claims to the products created by individual authors in the manuscript collections, except when the author deeded those rights to the Survey or when those authors were employed by the State of Arizona and created intellectual products as a function of their official duties. The Survey does maintain property rights to the physical and digital representations of the works.

QUALITY STATEMENT

The Arizona Geological Survey is not responsible for the accuracy of the records, information, or opinions that may be contained in the files. The Survey collects, catalogs, and archives data on mineral properties regardless of its views of the veracity or accuracy of those data.

04/20/87

ARIZONA DEPARTMENT OF MINES AND MINERAL RESOURCES FILE DATA

PRIMARY NAME: SIX-SHOOTER

ALTERNATE NAMES:

YAVAPAI COUNTY MILS NUMBER: 106B

LOCATION: TOWNSHIP 13 N RANGE 10 W SECTION 22 QUARTER E2
LATITUDE: N 34DEG 27MIN 34SEC LONGITUDE: W 113DEG 17MIN 20SEC
TOPO MAP NAME: ARRASTRA MTN NE - 7.5 MIN

CURRENT STATUS: EXP PROSPECT

COMMODITY:
GOLD

BIBLIOGRAPHY:

BLM AZ MINING CLAIMS LEAD FILE 72259
CLAIMS ALSO IN SEC. 14, 15 & 23
ADMMR SIX-SHOOTER FILE

SIX SHOOTER CLAIMS

YAVAPAI COUNTY

RRB WR 8/26/83: Visited the Six Shooter operation in Section 22, T13N,R10W. Separate report has been written.

NJN WR 11/25/83 It was reported that Carl Jathro's Mineral Research Co., has a small mill operating at its Gold property, the Six Shooter Claims.

RRB WR 3/13/87: Henry Gonzales, Wikieup, 765-2345 reports that he has leased the Six Shooter Claims (file) Yavapai County from B.F. Minerals. He has done some sampling with reasonable results and is doing more. He is considering leaching but is trying to stay away from cyanide. He is going to the Bureau of Mines research laboratory in Reno for information and instruction in the use of thiourea.

DEPARTMENT OF MINERAL RESOURCES

STATE OF ARIZONA
FIELD ENGINEERS REPORT

Mine Six Shooter

Date August 23, 1983

District Sec. 22, T13N, R10W

Engineer Richard R. Beard

Subject: Property Visit

Turned off Highway 93 at about milepost 151.9 and encountered locked gate. Walked about $\frac{1}{4}$ mile and talked to Tom Packard. Mr. Packard said that the property is owned by Carl Jathro through Mineral Research Company, 4666 N. Stockton Hill Rd., Kingman, Arizona 86401 Ph: (602) 757-9266 and that Oscar Parker is in charge of the operation. Mr. Parker also designed the mill which consists of a jaw crusher feeding two identical circuits each with a design capacity of 10 tons per day.

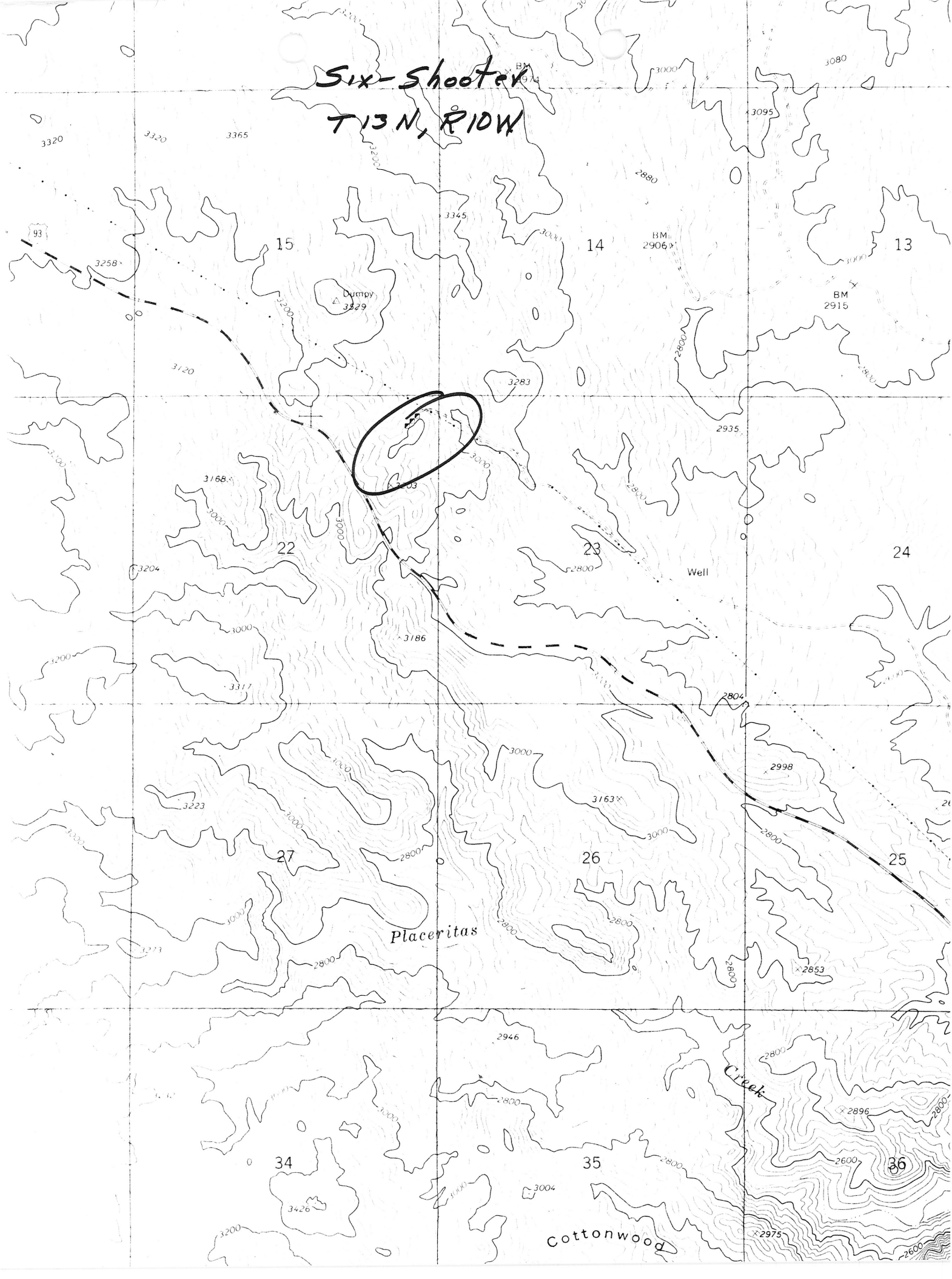
Each circuit is mounted on two skids as follows:

First skid has a secondary jaw crusher which feeds an impact mill in closed circuit with a 60 mesh screen. The minus 60 mesh is fed to a mineral jig and then to a second skid. This skid has a pachuca tank, a cyanide make-up tank and three holding tanks. The cyanide is circulated through the pachuca tank until the pregnant solution is strong enough to be electrowon directly without upgrading by use of charcoal. The gold is deposited on stainless steel plates in the cell.

Mr. Packard said that the vein ran 3 to 4 oz/ton Au but that feed to the plant ran $\frac{3}{4}$ oz/ton Au due to dilution in trying to open pit the mine. Apparently Mr. Jathro wants to operate open pit and Mr. Parker wants to mine it underground but they do not know the extent or tenor of the ore other than what they have exposed in the open cut.

*BF Minerals
McGarry*

Six-Shooter
T13 N, R10 W



Information from the Start Form of the Office-of State Mine Inspector's office: Carl J. Jatho, 4200 N. Arizona, Kingman, AZ 86401, of Mineral Research Co. listed the Six Shooter Calims as an open pit operation for precious metals. Start date was given as 7/17/83. Phone numbers are (602) 757-9266 and 757-7057.