



## **CONTACT INFORMATION**

Mining Records Curator  
Arizona Geological Survey  
1520 West Adams St.  
Phoenix, AZ 85007  
602-771-1601  
<http://www.azgs.az.gov>  
[inquiries@azgs.az.gov](mailto:inquiries@azgs.az.gov)

The following file is part of the

Arizona Department of Mines and Mineral Resources Mining Collection

## **ACCESS STATEMENT**

These digitized collections are accessible for purposes of education and research. We have indicated what we know about copyright and rights of privacy, publicity, or trademark. Due to the nature of archival collections, we are not always able to identify this information. We are eager to hear from any rights owners, so that we may obtain accurate information. Upon request, we will remove material from public view while we address a rights issue.

## **CONSTRAINTS STATEMENT**

The Arizona Geological Survey does not claim to control all rights for all materials in its collection. These rights include, but are not limited to: copyright, privacy rights, and cultural protection rights. The User hereby assumes all responsibility for obtaining any rights to use the material in excess of "fair use."

The Survey makes no intellectual property claims to the products created by individual authors in the manuscript collections, except when the author deeded those rights to the Survey or when those authors were employed by the State of Arizona and created intellectual products as a function of their official duties. The Survey does maintain property rights to the physical and digital representations of the works.

## **QUALITY STATEMENT**

The Arizona Geological Survey is not responsible for the accuracy of the records, information, or opinions that may be contained in the files. The Survey collects, catalogs, and archives data on mineral properties regardless of its views of the veracity or accuracy of those data.

PRINTED: 08-23-2012

ARIZONA DEPARTMENT OF MINES AND MINERAL RESOURCES AZMILS DATA

PRIMARY NAME: SILVER QUEEN

ALTERNATE NAMES:

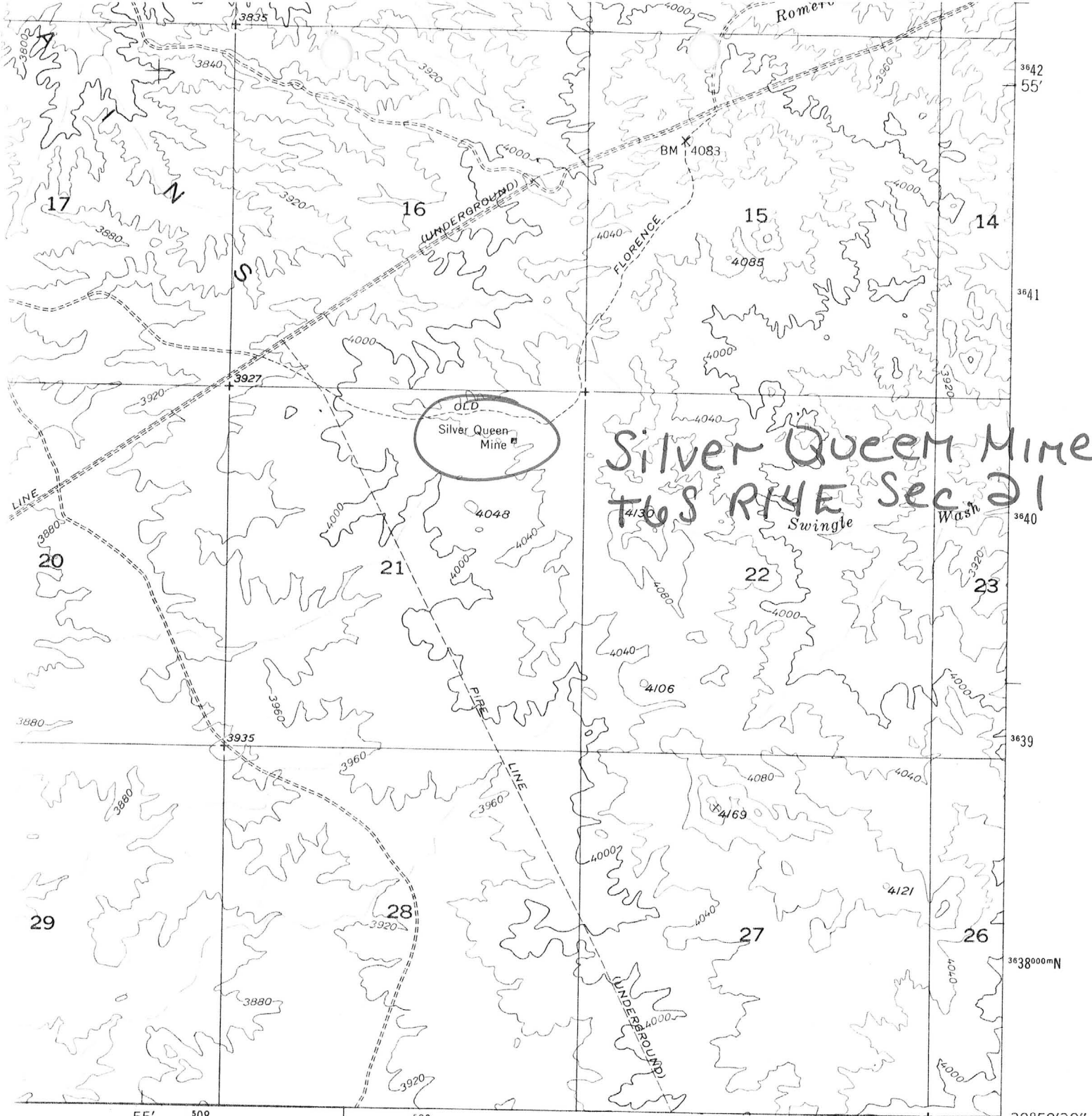
PINAL COUNTY MILS NUMBER: 409

LOCATION: TOWNSHIP 6 S RANGE 14 E SECTION 21 QUARTER NE  
LATITUDE: N 32DEG 57MIN 07SEC LONGITUDE: W 110DEG 53MIN 57SEC  
TOPO MAP NAME: CROZIER PEAK - 7.5 MIN

CURRENT STATUS: UNKNOWN

COMMODITY:  
SILVER  
GOLD

BIBLIOGRAPHY:  
USGS CROZIER PEAK QUAD  
ADMMR SILVER QUEEN FILE



1 MILE



ROAD CLASSIFICATION

HARD-SURFACE ALL WEATHER ROADS		DRY WEATHER ROADS	
Heavy-duty	4 LANE 16 LANE	Improved dirt	-----
Medium-duty	4 LANE 16 LANE	Unimproved dirt	-----
Loose-surface, graded, or narrow hard-surface - - - -			
U. S. Route		State Route	

**CROZIER PEAK, ARIZ.**  
N3252.5—W11052.5/7.5

(PUTNAM WASH)  
3849 N SE

\* GENERAL REFERENCES

REFERENCE 1 F1 < USOM FILE DATA, CLUSTER # 639 >

REFERENCE 2 F2 < ABGMT-USOM FILE DATA >

REFERENCE 3 F3 < USGS GEOLOGICAL QUADRANGLE MAP GQ 1107, 1974 >

REFERENCE 4 F4 < >

#5109

ORE NUMBER

U.S. CRIB-SITE FORM

RECORD IDENTIFICATION

RECORD NUMBER B10 < > RECORD TYPE B20 < X.I.M. > DEPOSIT NUMBER B40 < USOM >

REPORT DATE G1 < 82.10.4 > INFORMATION SOURCE B30 < 1.2 > FILE LINK IDENT. B50 < 0040210764 >

REPORTER(SUPERVISOR) G2 < BEST, DON E. > (last, first, middle initial) (last, first, middle initial)

REPORTER AFFILIATION G5 < ABGMT > SITE NAME A10 < SILVER QUEEN MINE >

SYNONYMS A11 < >

LOCATION

MINING DISTRICT/AREA A30 < COTTONWOOD DISTRICT >

COUNTY A60 < PINAL COUNTY > STATE A50 < A.Z. > COUNTRY A40 < U.S. >

PHYSIOGRAPHIC PROV A63 < 1.2 >

DRAINAGE AREA A62 < 1.50.50.1.0.0. >

QUADRANGLE NAME A90 < CROZIER PEAK QUADRANGLE > (1.9.5.0.) LAND STATUS A64 < 3.0. > (1.9.79.)

SECOND QUAD NAME A92 < > QUADRANGLE SCALE A100 < 24.0.0. >

ELEVATION A107 < 4040. > SECOND QUAD SCALE A91 < >

UTM

NORTHING A120 < 3645773 >

EASTING A130 < 509424 >

ZONE NUMBER A110 < 12 >

\*ACCURACY

ACCURATE ACC (circle)

ESTIMATED  UTM NOT ON QUAD. UTM COMPUTED FROM LAT. AND LONG. MEASUREMENTS

GEODETIC

LATITUDE A70 < > N

LONGITUDE A80 < > W

CADASTRAL

TOWNSHIP(S) A77 < 0.0.6.S. > RANGE(S) A78 < 0.1.4.E. >

SECTION(S) A79 < 21 >

SECTION FRACTION(S) A76 < NE OF NE >

MERIDIAN(S) A81 < GILA AND SALT RIVER >

POSITION FROM NEAREST PROMINENT LOCALITY A82 < LOCATED ON THE SW EDGE OF THE TORTILLA MOUNTAINS. >

LOCATION COMMENTS A83 < LOCATED 1000 FT. SOUTH OF OLD FLORENCE ROAD. >

COMMODITY INFORMATION

\*COMMODITIES PRESENT C10 <A.G. U. P. A. I. . . . .>  
 \*ORE MINERALS C30 < >  
 COMMODITY SUBTYPES C41 < >  
 GEN. ANALYTICAL DATA C43 < >  
 COM. INFO. COMMENTS C50 < >

\* SIGNIFICANCE

	PRODUCER		NON-PRODUCER
MAJOR PRODUCTS	MAJOR <A.G. . . . .>	MAIN COMMODITIES PRESENT	C11 < . . . . .>
MINOR PRODUCTS	MINOR <A.U. . . . .>	MINOR COMMODITIES PRESENT	C12 < . . . . .>
POTENTIAL PRODUCTS	POTEN < . . . . .>		
OCCURRENCES	OCCUR < . . . . .>	OCCURRENCES	OCCUR < . . . . .>

\*PRODUCTION

	PRODUCER		NON-PRODUCER
PRODUCTION <input checked="" type="radio"/> (circle)	PRODUCTION SIZE <input checked="" type="radio"/> SMALL <input type="radio"/> MED <input type="radio"/> LGE (circle one)	PRODUCTION	UND <input type="radio"/> NO <input type="radio"/> (circle one)

\*STATUS

EXPLORATION OR DEVELOPMENT

	PRODUCER		NON-PRODUCER
STATUS AND ACTIVITY	A20 <4>	STATUS AND ACTIVITY	A20 <L>

\*DISCOVERER L20 < >  
 \*YEAR OF DISCOVERY L10 < > \*NATURE OF DISCOVERY L30 <B> \*YEAR OF FIRST PRODUCTION L40 < > \*YEAR OF LAST PRODUCTION L45 < >  
 \*PRESENT/LAST OWNER A12 < >  
 \*PRESENT/LAST OPERATOR A13 < >  
 EXPL./DEV.COMMENTS L110 <OPERATORS INCLUDED SILVER QUEEN MINING COMPANY, ISAAC ROGERS>

DESCRIPTION OF DEPOSIT

\*DEPOSIT TYPE(S) C40 <VEIN / SHEAR ZONE>  
 \*DEPOSIT FORM/SHAPE M10 < >  
 \*DEPTH TO TOP M20 < > \*UNITS M21 < > \*MAXIMUM LENGTH M40 < > \*UNITS M41 < >  
 \*DEPTH TO BOTTOM M30 < > \*UNITS M31 < > \*MAXIMUM WIDTH M50 < > \*UNITS M51 < >  
 \*DEPOSIT SIZE M15  SMALL  MEDIUM  M15  LARGE (circle one) \*MAXIMUM THICKNESS M60 <745> \*UNITS M61 < >  
 \*STRIKE M70 <NGOE> \*DIP M80 < >  
 \*DIRECTION OF PLUNGE M100 < > \*PLUNGE M90 < >  
 \*DEP. DESC. COMMENTS M110 < >

DESCRIPTION OF WORKINGS

\*Workings are: SURFACE M120 UNDERGROUND  M130 BOTH M140 (circle one) \*OVERALL LENGTH M190 < > \*UNITS M191 < >  
 \*DEPTH BELOW SURFACE M160 < > \*UNITS M161 < > \*OVERALL WIDTH M200 < > \*UNITS M201 < >  
 \*LENGTH OF WORKINGS M170 < > \*UNITS M171 < > \*OVERALL AREA M210 < > \*UNITS M211 < >  
 \*DESC. OF WORK. COM. M220 < >

GEOLOGY

\*AGE OF HOST ROCK(S) K1 <P.R.E.C. . . . .>  
 \*HOST ROCK TYPE(S) K1A <GRANITE>  
 \*AGE OF IGNEOUS ROCK(S) K2 < . . . . .>  
 \*IGNEOUS ROCK TYPE(S) K2A < >  
 \*AGE OF MINERALIZATION K3 <L.C.R.E.T. - T.E.R.T. . . . .>  
 \*PERT. MINERALS (NOT ORE) K4 <QUARTZ, HEMATITE>  
 \*ORE CONTROL/LOCUS K5 < >  
 \*MAJ. REG. TRENDS/STRUCT. N6 <LARGE LCRET-TERT. MINERALIZED SYSTEM WITH EW-TRENDING DIKES 3 TO 5 MILES NORTH 1 MILE EAST>  
 \*TECTONIC SETTING N15 < >  
 \*SIGNIFICANT LOCAL STRUCT. N70 <NW TRENDING PREC APLITE DIKES 1/4 MILE SE, EW TRENDING TERTIARY DIKE 1 MILE EAST>  
 \*SIGNIFICANT ALTERATION N75 <QUARTZ - SERICITE - PYRITE>  
 \*PROCESS OF CONC./ENRICH. N80 < >  
 \*FORMATION AGE N30 <P.R.E.C. . . . .>  
 \*FORMATION NAME N30A <RUIN GRANITE>  
 \*SECOND FM AGE N35 < . . . . .>  
 \*SECOND FM NAME N35A < >  
 \*IGNEOUS UNIT AGE N50 < . . . . .>  
 \*IGNEOUS UNIT NAME N50A < >  
 \*SECOND IG. UNIT AGE N55 < . . . . .>  
 \*SECOND IG. UNIT NAME N55A < >  
 \*GEOLOGY COMMENTS N85 < >

GENERAL COMMENTS

GENERAL COMMENTS GEN < >