



CONTACT INFORMATION

Mining Records Curator
Arizona Geological Survey
1520 West Adams St.
Phoenix, AZ 85007
602-771-1601
<http://www.azgs.az.gov>
inquiries@azgs.az.gov

The following file is part of the

Arizona Department of Mines and Mineral Resources Mining Collection

ACCESS STATEMENT

These digitized collections are accessible for purposes of education and research. We have indicated what we know about copyright and rights of privacy, publicity, or trademark. Due to the nature of archival collections, we are not always able to identify this information. We are eager to hear from any rights owners, so that we may obtain accurate information. Upon request, we will remove material from public view while we address a rights issue.

CONSTRAINTS STATEMENT

The Arizona Geological Survey does not claim to control all rights for all materials in its collection. These rights include, but are not limited to: copyright, privacy rights, and cultural protection rights. The User hereby assumes all responsibility for obtaining any rights to use the material in excess of "fair use."

The Survey makes no intellectual property claims to the products created by individual authors in the manuscript collections, except when the author deeded those rights to the Survey or when those authors were employed by the State of Arizona and created intellectual products as a function of their official duties. The Survey does maintain property rights to the physical and digital representations of the works.

QUALITY STATEMENT

The Arizona Geological Survey is not responsible for the accuracy of the records, information, or opinions that may be contained in the files. The Survey collects, catalogs, and archives data on mineral properties regardless of its views of the veracity or accuracy of those data.

PRINTED: 08/08/2002

ARIZONA DEPARTMENT OF MINES AND MINERAL RESOURCES AZMILS DATA

PRIMARY NAME: SILICA QUARRY

ALTERNATE NAMES:

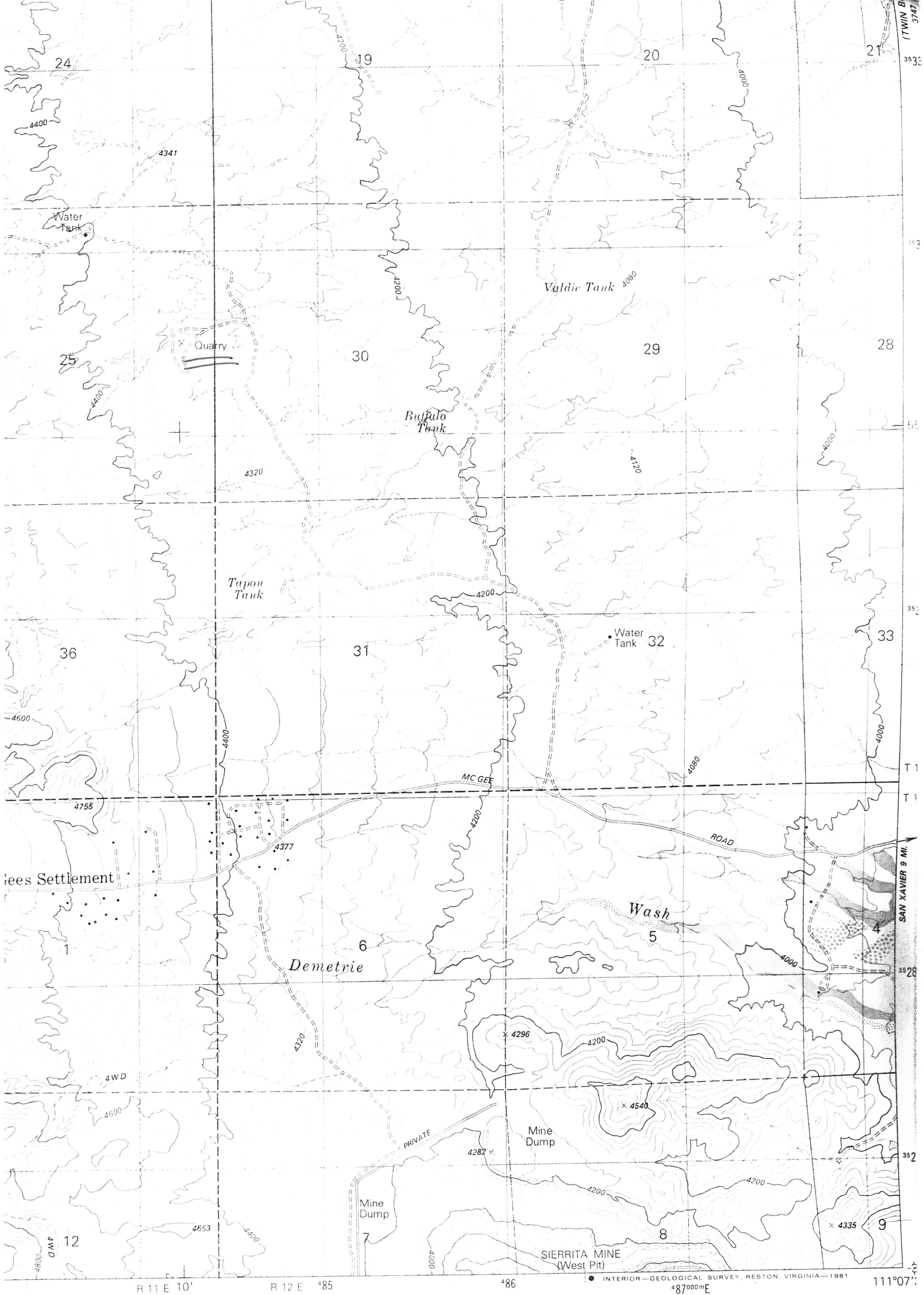
PIMA COUNTY MILS NUMBER: 849

LOCATION: TOWNSHIP 17 S RANGE 11 E SECTION 25 QUARTER --
LATITUDE: N 31DEG 55MIN 16SEC LONGITUDE: W 111DEG 09MIN 59SEC
TOPO MAP NAME: SAMANIEGO PEAK - 7.5 MIN

CURRENT STATUS: UNKNOWN

COMMODITY:
SILICON

BIBLIOGRAPHY:
ADMMR SILICA QUARRY FILE



1 MILE
7000 FEET
1 KILOMETER



QUADRANGLE LOCATION

ROAD CLASSIFICATION

Primary highway, hard surface ——— Light-duty road, hard or improved surface ———
Secondary highway, hard surface ——— Unimproved road ———
○ Interstate Route ○ U. S. Route ○ State Route

SAMANIEGO PEAK, ARIZ.

NW/4 TWIN BUTTES 15' QUADRANGLE
N3152.5-W11107.5/7.5

From
WIDE WORLD OF MAPS, INC.
ARIZ. MAP SHOP & GALLERY
Phoenix, Arizona

1981



STATE OF ARIZONA

DEPARTMENT OF MINES AND MINERAL RESOURCES

Mineral Building, Fairgrounds, Phoenix, Arizona 85007 • (602) 255-3791

SILICA QUARRY

PIMA COUNTY
PIMA DIST.
T17S, R11E, Sec 25

New MILS entry #849 SILICA QUARRY

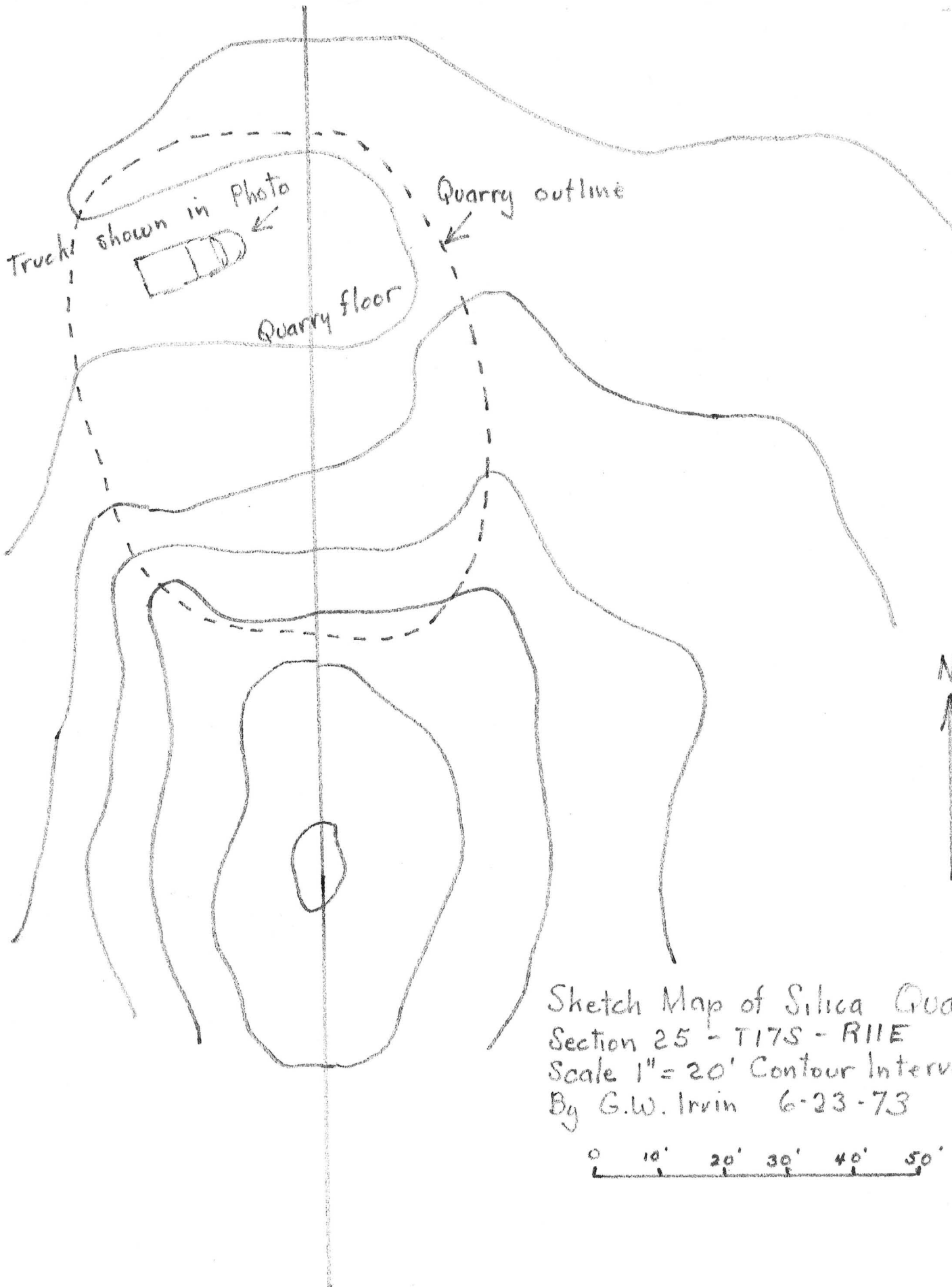
USGS SAMANIEGO PEAK 7.5' Quad

FIELD REPORT
ON
STATE MINERAL LEASE NO. 760

Prepared by
G.W. Irvin, Field Engineer
Department of Mineral Resources

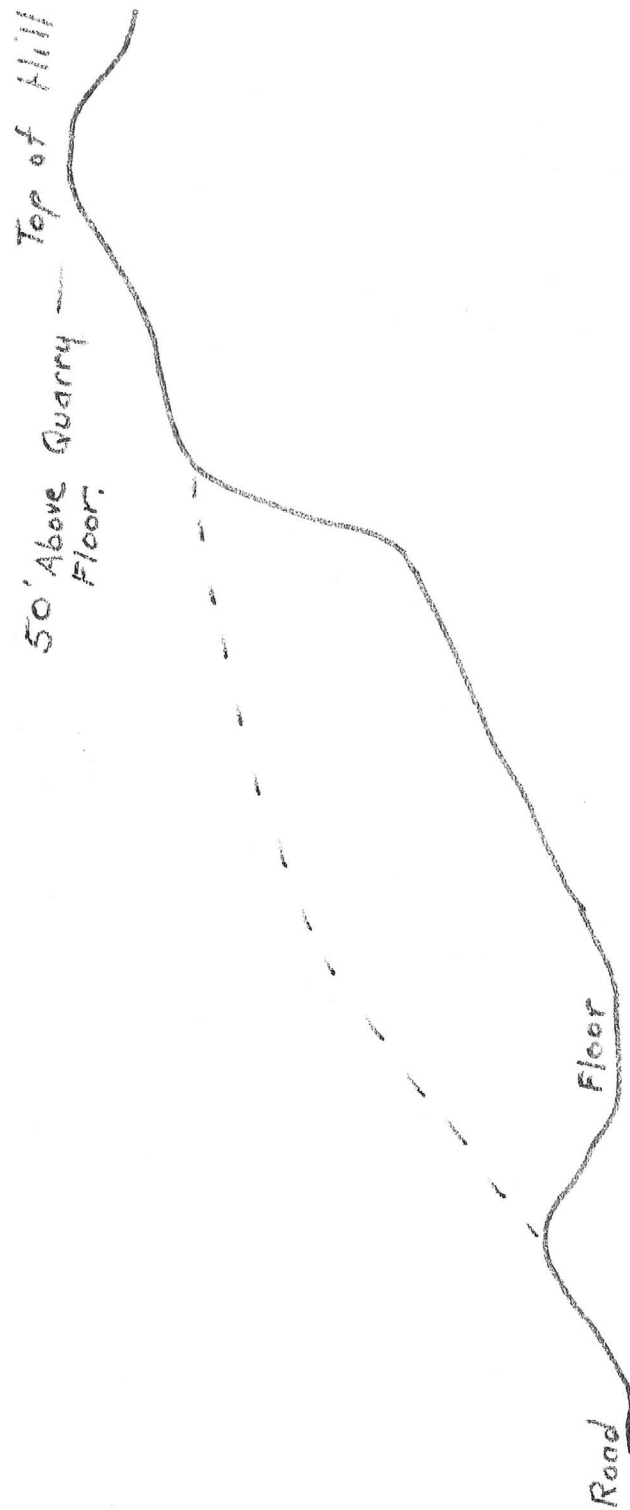
for
STATE LAND DEPARTMENT

July 2, 1973



Sketch Map of Silica Quarry
Section 25 - T17S - R11E
Scale 1" = 20' Contour Interval 10'
By G.W. Irvin 6-23-73





X-Section of Pit

REPORT ON STATE MINERAL LEASE 760

THIS CLAIM WAS EXAMINED BY G.W. IRVIN ON JUNE 23, 1973, FOR THE PURPOSE OF ASCERTAINING COMPLIANCE WITH WORK REQUIREMENTS AND MINERAL CHARACTERISTICS. LEASE 760, CONTAINING APPROXIMATELY 20 ACRES, IS LOCATED IN SECTION 25, T17S, R11E. THE SOUGHT AFTER MINERAL IS A WHITE QUARTZ ROCK OF HIGH SILICA CONTENT. THE QUARTZ IS VEIN QUARTZ COMMONLY CALLED BULL QUARTZ. THE COUNTRY ROCK IS PROBABLY LARIMIDE QUARTZ MONZONITE.

MR. ROBERT O'HAIRE, OF THE ARIZONA BUREAU OF MINES, EXAMINED A REPRESENTATIVE SAMPLE AND REPORTED THAT IT WOULD RUN 90+ PERCENT SILICA WITH THE MAIN IMPURITY BEING ALUMINA IN THE FORM OF POTASH FELDSPAR, EITHER ORTHOCLASE OR MICROCLINE. THE IRON OXIDE CONTENT WOULD MAKE THIS SILICA UNUSABLE TO THE GLASS INDUSTRY. SMALL INCLUSIONS OF TITANITE WERE OBSERVED.

AN ESTIMATED 4000 TO 5000 TONS OF QUARTZ HAVE BEEN REMOVED FROM THE QUARRY AND ALL APPEARS TO HAVE BEEN STOCKPILED, AS SHOWN IN THE PHOTOS AND ACCOMPANYING SKETCH MAP.

NOT MORE THAN 15,000 OR 20,000 TONS OF QUARTZ ROCK CAN BE CLASSIFIED AS RESERVES WITHOUT CAREFUL GEOLOGICAL MAPPING AND PHYSICAL WORK AS DRILLING.

FIVE OF THE SIX CLAIM MARKER POSTS WERE SEEN. THE NORTHWEST CORNER WAS NOT SEEN BUT APPEARS TO BE LOCATED IN A HEAVY CAT CLAW AREA. IT APPEARS THAT WORK REQUIREMENTS HAVE BEEN MET.

APPARENTLY THE LEASEHOLDER HAS NOT BEEN ABLE TO DEVELOP A MARKET FOR THE MATERIAL. WHILE IT MAY CONTAIN TOO MUCH ALUMINA FOR SMELTER FLUX, THIS POSSIBILITY SHOULD BE CHECKED, AS REQUIREMENTS MAY VARY. ANOTHER USE WOULD BE AS A BUILDING MATERIAL IN ONE WAY OR ANOTHER.

