



## **CONTACT INFORMATION**

Mining Records Curator  
Arizona Geological Survey  
1520 West Adams St.  
Phoenix, AZ 85007  
602-771-1601  
<http://www.azgs.az.gov>  
[inquiries@azgs.az.gov](mailto:inquiries@azgs.az.gov)

The following file is part of the

Arizona Department of Mines and Mineral Resources Mining Collection

## **ACCESS STATEMENT**

These digitized collections are accessible for purposes of education and research. We have indicated what we know about copyright and rights of privacy, publicity, or trademark. Due to the nature of archival collections, we are not always able to identify this information. We are eager to hear from any rights owners, so that we may obtain accurate information. Upon request, we will remove material from public view while we address a rights issue.

## **CONSTRAINTS STATEMENT**

The Arizona Geological Survey does not claim to control all rights for all materials in its collection. These rights include, but are not limited to: copyright, privacy rights, and cultural protection rights. The User hereby assumes all responsibility for obtaining any rights to use the material in excess of "fair use."

The Survey makes no intellectual property claims to the products created by individual authors in the manuscript collections, except when the author deeded those rights to the Survey or when those authors were employed by the State of Arizona and created intellectual products as a function of their official duties. The Survey does maintain property rights to the physical and digital representations of the works.

## **QUALITY STATEMENT**

The Arizona Geological Survey is not responsible for the accuracy of the records, information, or opinions that may be contained in the files. The Survey collects, catalogs, and archives data on mineral properties regardless of its views of the veracity or accuracy of those data.

PRINTED: 08-13-2002

ARIZONA DEPARTMENT OF MINES AND MINERAL RESOURCES AZMILS DATA

PRIMARY NAME: SHIPLEY PIT

ALTERNATE NAMES:  
MCKEE QUARRY

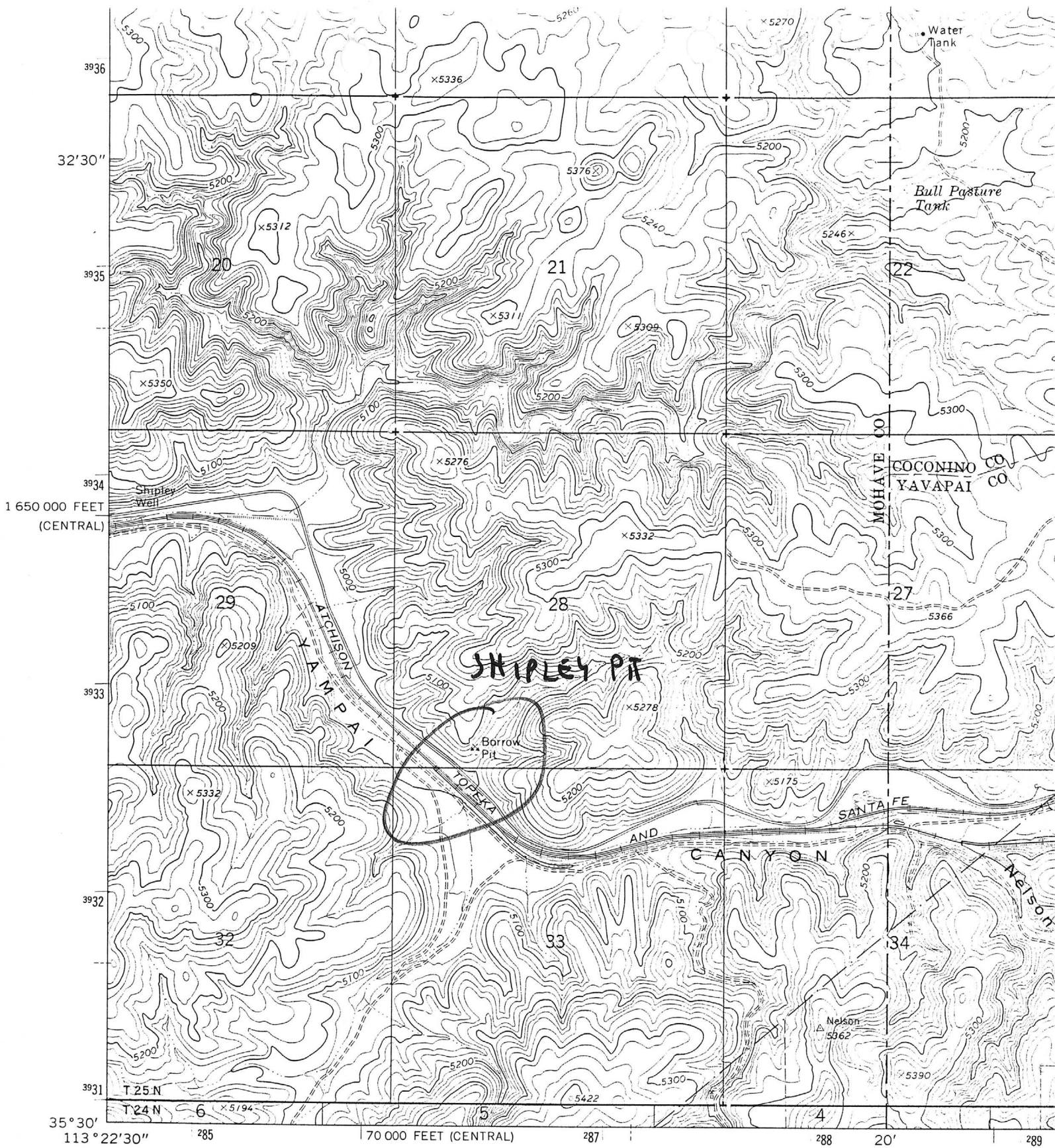
MOHAVE COUNTY MILS NUMBER: 143A

LOCATION: TOWNSHIP 25 N RANGE 10 W SECTION 28 QUARTER SW  
LATITUDE: N 35DEG 30MIN 59SEC LONGITUDE: W 113DEG 21MIN 20SEC  
TOPO MAP NAME: NELSON - 7.5 MIN

CURRENT STATUS: PRODUCER

COMMODITY:  
STONE DOLOMITE CB  
STONE RR BALLAST  
MAGNESIUM DOLOMITE  
CALCIUM DOLOMITE

BIBLIOGRAPHY:  
ADMMR SHIPLEY PIT FILE  
USBM INFO: OP: ROBERT F. MCKEE INC, 1978  
OPERATED FOR RAILROAD BALLAST BY ROBERT E.  
MCKEE INC, A SUBSIDIARY OF SANTA FE RR.  
WEITZ, JOHN H. 1942, HIGH GRADE DOLOMITE DPSTS  
IN US, USBM IC 7226, P.74,78,82, (#44)  
FUNNELL, JOHN E. 1964, COMPENDIUM ON NONMETALLIC  
MINERALS OF ARIZONA, P. 180



Mapped, edited, and published by the Geological Survey

Control by USGS and USC&GS

Topography by photogrammetric methods from aerial photographs taken 1966. Field checked 1967

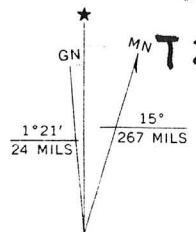
Polyconic projection. 1927 North American datum  
10,000-foot grids based on Arizona coordinate system, central and west zones

1000-meter Universal Transverse Mercator grid ticks, zone 12, shown in blue

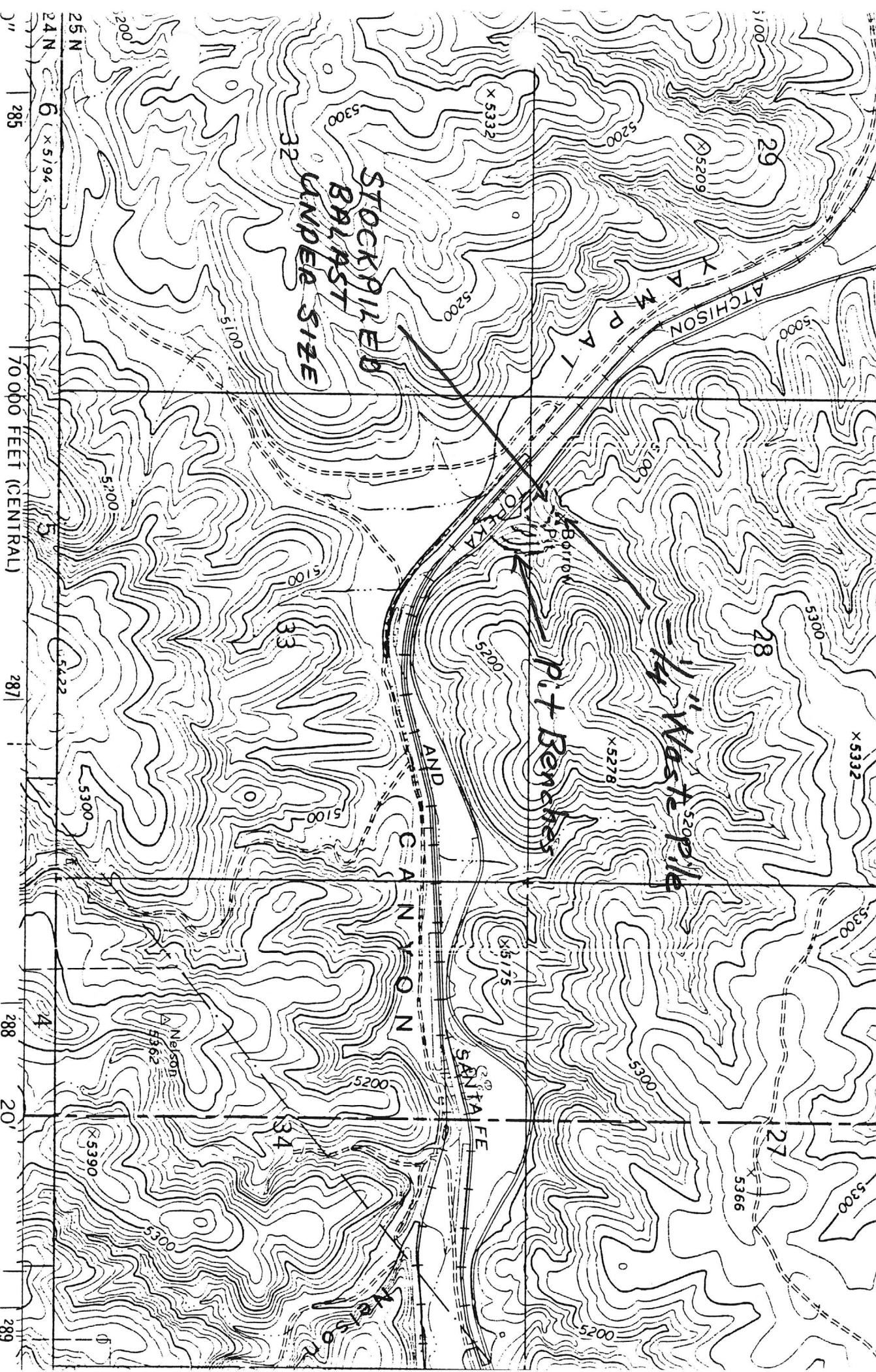
Fine red dashed lines indicate selected fence lines

**NELSON 7.5'**

**T 25N R10W Sec 28**



UTM GRID AND 1967 MAGNETIC NORTH DECLINATION AT CENTER OF SHEET



Map, edited, and published by the Geological Survey

Control by USGS and USC&GS

Topography by photogrammetric methods from aerial

photographs taken 1966. Field checked 1967

**SHIPLEY PIT**

Nov 1990

Ken A. Phillips

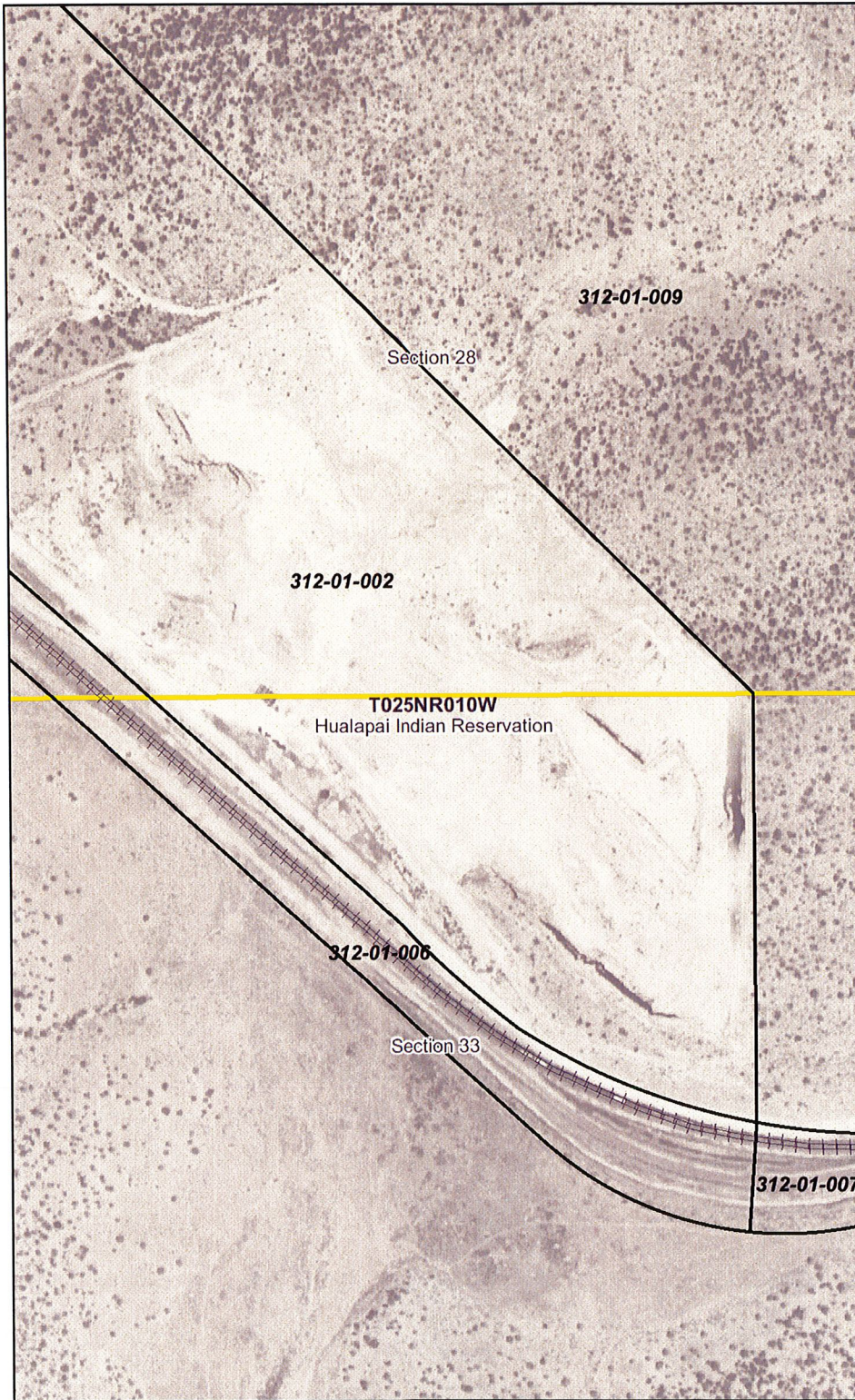
GN

M/N



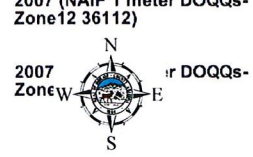


# Shibley Pit - 312-01-002



- Populated Places**
- Incorporated Cities
- Centerline
- Railroads
- Tax Parcels**
- 2
- 0
- Township/ Range
- Sections
- Federal Lands**
- Indian Reservations BIA
- National Monument NPS/BLM
- National Park NPS
- National Recreation Area NPS
- Wilderness Area BLM
- Wilderness Study Area NPS
- Land Ownership**
- Arizona Game and Fish
- AZ State Trust Land
- Bureau of Land Management
- Bureau of Reclamation
- National Wildlife Refuge
- Indian Allotments
- National Forest
- Military Reservation
- Parks and Recreation
- National Monument
- Waterbodies**
- 2007 0.4-ft Mohave Channel
- 2007 0.4-ft Valle Vista
- 2005 1-ft (Lake Havasu City Area)
- 2005 0.25-ft (Lake Havasu City)
- 2007 (NAIP 1 meter DOQQs-Zone12 37113)
- 2007 (NAIP 1 meter DOQQs-Zone12 37112)
- 2007 (NAIP 1 meter DOQQs-Zone12 36113)
- 2007 (NAIP 1 meter DOQQs-Zone12 36112)
- 2007 (NAIP 1 meter DOQQs-Zone12 36111)

Scale: 1:6,000

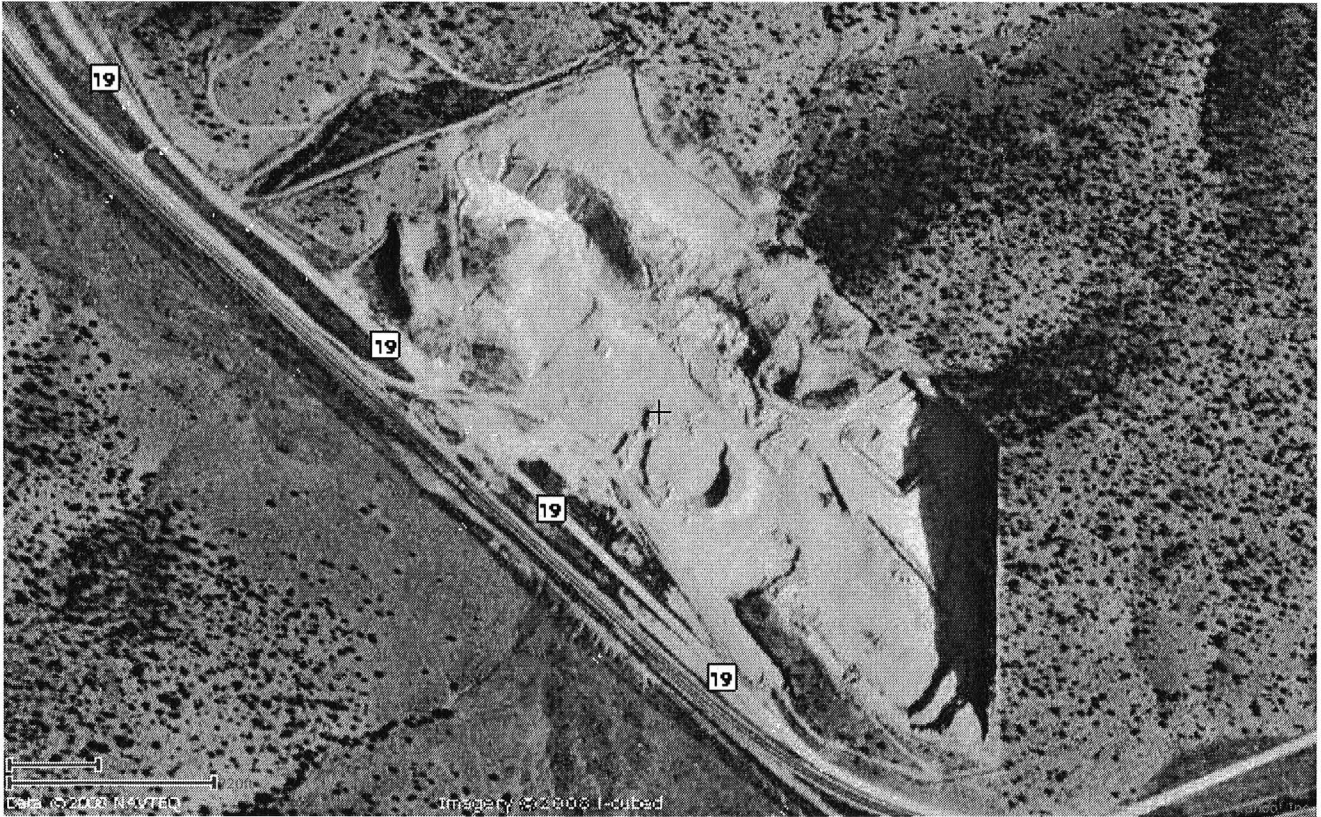


Map created on: Sep 10, 2008

Map center: 35° 30' 55.3" N, 113° 21' 17.4" W

This map is a user generated static output from Mohave County Interactive Map Viewer and is for general reference only. Data layers that appear on this map may or may not be accurate, current, or otherwise reliable. THIS MAP IS NOT TO BE USED AS A LEGAL DOCUMENT, FOR PROPERTY DESCRIPTIONS, OR DETERMINATION OF LEGAL TITLE, AND SHOULD NEVER BE SUBSTITUTED FOR SURVEY OR DEED INFORMATION. The user agrees to comply with the Limitation of Use, and Assumption of Risk as stated in the full disclaimer at [http://mcmv.co.mohave.az.us/imf/sites/moh\\_test/jsp/launch.jsp](http://mcmv.co.mohave.az.us/imf/sites/moh_test/jsp/launch.jsp)





Ship. y Pit file <sup>myk</sup>  
<sub>MS</sub>

Outland Resources, Corp.  
P.O. Box 4105  
Kingman, Az 86401  
(602)753-1444  
March 2, 1991

The appropriation Committee staff has recommended closure of the Department of Arizona Mines and Mineral Resources.

I am writing you to plead with all my heart that you disregard such a recommendation. This Department had become and will continue to be one of the very necessary attributes to the State of Arizona.

Outland Resources, Corp. has been in the business of decorative rock landscaping and quarrying for three years. Our corporation started as a partnership and has grown so large we had to expand our business and services.

Mr. Ken Phillips from the Arizona Department of Mines has worked closely with our company and several other Arizona State companies and he has been extremely successful in joining all of our efforts in order that we might use rock products available in Arizona for the new road base products now coming on the market. Without his interest and concern for this State and it's resources, our company would not have known our product was good for the new uses. He got us together with the manufacturer of the new road base, we ran tests and low and behold, we have a good saleable product, the other company ~~does~~ not have to import the rock. We will be adding several employees to our staff, the road work will be completed more efficiently and in a much shorter period of time. The most important factor here being, the money is made and kept in Arizona.

I know our company and several other companies that work with us have grown only because of Mr. Phillips efforts and those on his staff.

Please, please hear us. We need the Department.

If you need more information from me, feel free to call. Thank you for your time.

I remain  
Yours Truly,

*Patti Lewis, Pres.*  
Patti Lewis

R.H.

Bondar-Clegg & Company Ltd.  
130 Pemberton Ave.  
North Vancouver, B.C.  
V7P 2R5  
(604) 985-0681 Telex 04-352667



# Geochemical Lab Report

A DIVISION OF INCHCAPE INSPECTION & TESTING SERVICES

REPORT: V91-32033.0

DATE PRINTED: 1-FEB-91

PROJECT: SAHUARO PETRO

PAGE 1B

SAMPLE NUMBER	FILMENT UNITS	Totals PCT	BaO PCT	Cr2O3 PCT	S Tot PCT
R2 A28328		99.62	<0.00	<0.01	<0.02
<del>R2 A28335</del>		<del>100.57</del>	<del>&lt;0.00</del>	<del>&lt;0.01</del>	<del>0.02</del>



Bondar-Clegg & Company Ltd.  
 130 Pemberton Ave.  
 North Vancouver, B.C.  
 V7P 2R5  
 (604) 985-0681 Telex 04-352667



Geochemical  
 Lab Report

A DIVISION OF INCHCAPE INSPECTION & TESTING SERVICES

REPORT: V91-32033.D ( COMPLETE )

REFERENCE INFO:

CLIENT: ARIZONA DEPARTMENT OF MINES  
 PROJECT: SAHUARO PEIRO

SUBMITTED BY: K. PHILLIPS  
 DATE PRINTED: 1-FEB-91

ORDER	ELEMENT	NUMBER OF ANALYSES	LOWER DETECTION LIMIT	EXTRACTION	METHOD
1	SiO2 Silica	2	0.01 PCT	Borate fusion	DC Plasma Emission
2	TiO2 Titanium (TiO2)	2	0.01 PCT	Borate fusion	DC Plasma Emission
3	Al2O3 Alumina (Al2O3)	2	0.01 PCT	Borate fusion	DC Plasma Emission
4	Fe2O3 Total Iron as Fe2O3	2	0.01 PCT	Borate fusion	DC Plasma Emission
5	MnO Manganese (MnO)	2	0.01 PCT	Borate fusion	DC Plasma Emission
6	MgO Magnesium (MgO)	2	0.01 PCT	Borate fusion	DC Plasma Emission
7	CaO Calcium (CaO)	2	0.01 PCT	Borate fusion	DC Plasma Emission
8	Na2O Sodium (Na2O)	2	0.01 PCT	Borate fusion	DC Plasma Emission
9	K2O Potassium (K2O)	2	0.01 PCT	Borate fusion	DC Plasma Emission
10	LOI Loss On Ignition	2	0.01 PCT		Gravimetric
11	P2O5 Phosphorous (P2O5)	2	0.01 PCT	Borate fusion	DC Plasma Emission
12	Totals Whole Rock Totals	2	0.01 PCT		
13	BaO Barium (BaO)	2	0.01 PCT	Borate fusion	DC Plasma Emission
14	Cr2O3 Chromium (Cr2O3)	2	0.01 PCT	Borate fusion	DC Plasma Emission
15	S Tot Sulphur (Total)	2	0.02 PCT		leco

SAMPLE TYPES	NUMBER	SIZE FRACTIONS	NUMBER	SAMPLE PREPARATIONS	NUMBER
R ROCK OR BED ROCK	2	2 -150	2	PULVERIZING	2

REPORT COPIES TO: MR. KEN PHILLIPS  
 MR. MIKE DOYLE

INVOICE TO: MR. MIKE DOYLE

Robert E. McKee Industries Active file

Stopped at Santa Fe Railroad office in Winslow. According to Mr. Robert A. Kleindienst, Chief Clerk to Division, Engineer, they stopped cinder production (for their own use) at the Darling Pit. The red cinders (black was satisfactory) were too porous and absorbed too much moisture. They have opened up a dolomite mine and crushing plant near Peach Springs operated by Robert E. McKee Company (see file). Mr. Jett's Travel 5/25/77

ROBERT E. MCKEE INDUSTRIES

Shipley Arizona - 4 miles east of Peach Springs - P. O. Box 107, Peach Springs Arizona 86434 - Phone 769-2364 - Dolomite quarry - Railroad ballast

Dolan 1

Supt. . . . . Whitey Bradley

Bob McKee

Mr. Bradley lives in Kingman, Box 106, Kingman Az. 86401.

WR GW 12-6-77-Visited with Mr. Bradley at the McKee ballast quarry 4 miles east of Peach Springs. The dolomite is on 147 acres of Santa Fe R.R. ground and contains an estimated 4 billion cu yds. Mr. Bradley with about 8 men, produces 4,000 tons/day of - 3/4" + 1/2" & - 3/8" + 3/4". Drilling is done with 2 Worthington airtracs putting down 30 ft. holes 3" in diameter. There are 3 frontend loaders of 6 to 8 cu yd capacities and a crushing & screening plant. Mr. Bradley lives in Kingman and has recently found a pegmatite with some beryl in it, therefore, he would like some information on marketing it. 12-13-77 bh

rrb wr 10/30/81: Visited Robert E. McKee, Inc., P.O. Box 107, Peach Springs, Az. Toured the property with Whitey Bradley, Superintendent and was impressed by the professional appearance of the operation. They are mining, crushing and screening dolomite. The plus 1 1/2" is used as railroad ballast, the minus 1 1/2" + 3/8" is used for road surface and ground cover and the fines are stockpiled.

Bondar-Clegg & Company Ltd.  
 130 Pemberton Ave.  
 North Vancouver, B.C.  
 V7P 2R5  
 (604) 985-0681 Telex 04-352667



*Shipley Pit, Mohave*

**Geochemical  
 Lab Report**

A DIVISION OF INCHCAPE INSPECTION & TESTING SERVICES

DATE PRINTED: 1-FEB-91

REPORT: V91-32033.0

PROJECT: SAHUARO PETRO PAGE 1A

SAMPLE NUMBER	FLMNT UNITS	SiO2 PCT	TiO2 PCT	Al2O3 PCT	Fe2O3 PCT	MnO PCT	MgO PCT	CaO PCT	Na2O PCT	K2O PCT	LOI PCT	P2O5 PCT
R2 A28328	<i>SHIPLEY PIT</i>	9.16	0.01	0.28	0.20	0.03	15.30	33.00	<0.01	0.03	41.39	0.22
R2 <del>A28335</del>	<del><i>SANTA RITA</i></del>	<del>3.17</del>	<del>&lt;0.01</del>	<del>0.26</del>	<del>0.06</del>	<del>0.03</del>	<del>0.33</del>	<del>54.80</del>	<del>&lt;0.01</del>	<del>0.02</del>	<del>41.72</del>	<del>0.18</del>

*Sample A28328 from Shipley Pit in  
 County. Sample is of crushed, screened,  
 minus 1/4" pink to flesh colored dolomite.*

*Shipley Pit file*

# CALIFORNIA INSTITUTE OF TECHNOLOGY

PHYSICS DEPARTMENT 161-33  
PASADENA, CA 91125

tel. (818) 395-4304, fax (818) 568-8263  
e-mail novikov@cco.caltech.edu

August 1, 1996

Ken A. Phillips, Chief Engineer  
Department of Mines and Mineral Resources  
State of Arizona

Dear Mr. Phillips:

This is to inform you that we have finally completed the search for low radioactive aggregate for our Palo Verde neutrino laboratory. We've chosen marble from Queen Creek - one out of three options in Arizona you've suggested to us.

We went through many samples of minerals which we have received from many places in the USA and Canada. We have measured radioactivities in the samples by means of  $\gamma$ -spectrometry, using Caltech's low background facility (semiconductor Ge detector). The sensitivity of this technique is  $\sim 1$  ppb - well below of the required purity of materials needed for the construction ( $\sim 100$  ppb of  $^{238}\text{U}$ ,  $^{232}\text{Th}$ ,  $^{40}\text{K}$ ).

Please find enclosed the results of our measurements. Some samples have shown U, Th, K concentrations much below that from Queen Creek. However, radioactivities in the final concrete mixture are governed by radioactivities in cement (16.5% by weight). From this point of view, as well as for reasons of cost (material+shipping), the marble from Queen Creek is clearly our best option. Concentrations of  $^{238}\text{U}$ ,  $^{232}\text{Th}$  and  $^{40}\text{K}$  in the final concrete mixture based on marble from Queen Creek are very close to our design goal.

I would like to thank you again for your cooperation which was very important for the progress of our neutrino experiment.

Sincerely yours,



Dr. Vladimir M. Novikov



Sand & Gravel

S A M P L E	CONCENTRATION, ppb		
	K-40	U-238	Th-232
BASALT Phoenix, AZ	2110+/-100	3420+/-460	14682+/-2041
SAND B-9 Palo Verde, AZ	2578+/-124	1492+/-230	6643+/-1109
MARBLE (Queen Creek Limestone) Queen Creek, AZ	111+/-9	434+/-62	142+/-69
MARBLE (Santa Rita Quarry) Sahuarita, AZ	62+/-11	238+/-46	159+/-104
DOLOMITE Kingman, AZ (Shipley Pit)	43+/-4	262+/-35	188+/-44
DOLOMITE Salinas, CA	2.2+/-1.4	120+/-20	< 68
DOLOMITE Haley, Ontario	27+/-3	68+/-11	69+/-24
OLIVINE Bellingham, WA	2.4+/-0.6	< 4	10+/-7

Cement

HOLNAM, Theodore, AL	371+/-31	6602+/-846	4447+/-746
ORDINARY, Phoenix, AZ	633+/-25	1365+/-175	3288+/-451
WHITE, Waco, TX	118+/-9	1898+/-242	2359+/-337

Samples here described from the mine listed below are contained in the AzDMMR collection of reference samples.

Date Taken: 01/21/92  
Date Logged: 10/04/93  
Sample Number: 01/21/92-033

MINE: Shipley Pit (file)  
COUNTY: Yavapai  
LOCATION: Pocket of crystalline calcite  
DESCRIPTION: Intergrown calcite crystals; mostly broken & showing cleavage.  
MATERIAL: Calcite  
COMMENTS: Supplied by Dundy Layton as example of material found in large vugs in dolomite deposit. He hoped to be able cleave calcite rhombs for sale from the material.



The pit has produced several millions tons of 7/8" railroad ballast and has produced a stockpile of a few hundred thousand tons of - 7/8" + 1/4" material and about 2 million tons of - 1/4" waste. Approximately 100,000 tons of the - 7/8" stockpile has been screened into three fractions: (1) + 1/2" - 3/8", (2) + 3/8" - 1/2", and (3) + 1/2" - 7/8". A few tens of thousands tons of these fractions have been sold for chip sealing projects.

Mr. Lundy is also recovering calcite rhombohedrons from cavities in the pit walls.

Samples ADMMR 28328 through ADMMR 28334 were taken from the stockpiles.

Date: November 1990

*Ken A. Phillips*



ARIZONA DEPARTMENT OF MINES AND MINERAL RESOURCES

VERBAL INFORMATION SUMMARY

1. Information from: Bob O'Brien, Santa Fe Minerals
2. Address: Albuquerque, New Mexico
3. Phone: (505)-881-3050
4. Mine or property name: Shipley Pit
5. ADMMR Mine file: Shipley Pit
6. County: Mohave
7. MILS number: 143 A
8. Operational Status: Active
9. Summary of information received, comments, etc.:

This deposit, long time a producer of railroad ballast by Santa Fe is still owned by Santa Fe even though they sold off Robert E. McKee Co. As noted elsewhere in the file, no railroad ballast has been shipped since April 1987. They have recently leased the stockpile to D P Enterprises of Kingman. D P. Enterprises is operated by Dayton Lundy and Patti Lewis. They are screening the stockpile to make decorative rock. Mr. O'Brien reported there are 2 million tons of minus  $\frac{1}{4}$ " material they classify as waste. If the chemistry of such material was correct it could be screened for slurry seal "aggregate" (sand).

The phone number of D P Enterprises is (602) 753-1444

Date: November 16, 1990

Ken A. Phillips

SHIPLEY PIT

MOHAVE COUNTY

NJN WR 8/19/85: Joe Langlois, mining engineer with the State Dept. of Revenue, called and reported that Santa Fe Railroad may have its subsidiary Robert E. McKee close the Shipley pit next year. Santa Fe has quarries in California and Oklahoma with a harder material that would make a better railroad ballast.

---

MG WR 10/25/85: Earlier reports that the Shipley pit in Mohave County may shut down are apparently true. An employee of Robert E. McKee, Inc., told me the company is looking for a similar quarry in New Mexico and the Arizona pit may be closed soon.

---

NJN WR 11/27/87: Terry Bradley (card) reports that the Shipley Pit (file) Mohave County stopped mining actively the last week in April '87 and Santa Fe, parent company of Robert E. McKee, moved the operation to an andesite occurrence near Newberry, California. There remains 300,000 tons of 1/4 to 3/4" dolomite chips stockpiled which they want to sell in one contract but will allow the purchaser 5 years to remove the material. They are seeking a price of \$3 a ton for the material. The contact is still Bob O'Brien as reported by the clipping in the file.

---

ROBERT E. MCKEE INDUSTRIES (Active file) Mohave Co.  
Shipley Arizona (4 miles E. of Peach Springs)

P.O. Box 107

Peach Springs, Arizona 86434

Tele: 769-2364

Dolomite Quarry - Railroad Ballast

Superintendent - Mr. Whitay Bradley

Corporate Headquarters:

S.G. Carlson Asst. Vice Pres.  
Box 20562

El Paso, Texas 79998

wholly owned subsidiary of Santa Fe Railroad

Plant capacity 40 RR cars per day

ROBERT E. MCKEE INDUSTRIES (Active file) Mohave Co.

Shipley Arizona (4 miles E. of Peach Springs)

P.O. Box 107

Peach Springs, Arizona 86434

Tele: 769-2364

Dolomite Quarry - Railroad Ballast

Superintendent - Mr. Whitay Bradley

Corporate Headquarters:

S.G. Carlson Asst. Vice Pres.

Box 20562

El Paso, Texas 79998

wholly owned subsidiary of Santa Fe Railroad

Plant capacity 40 RR cars per day