



## **CONTACT INFORMATION**

Mining Records Curator  
Arizona Geological Survey  
1520 West Adams St.  
Phoenix, AZ 85007  
602-771-1601  
<http://www.azgs.az.gov>  
[inquiries@azgs.az.gov](mailto:inquiries@azgs.az.gov)

The following file is part of the

Arizona Department of Mines and Mineral Resources Mining Collection

## **ACCESS STATEMENT**

These digitized collections are accessible for purposes of education and research. We have indicated what we know about copyright and rights of privacy, publicity, or trademark. Due to the nature of archival collections, we are not always able to identify this information. We are eager to hear from any rights owners, so that we may obtain accurate information. Upon request, we will remove material from public view while we address a rights issue.

## **CONSTRAINTS STATEMENT**

The Arizona Geological Survey does not claim to control all rights for all materials in its collection. These rights include, but are not limited to: copyright, privacy rights, and cultural protection rights. The User hereby assumes all responsibility for obtaining any rights to use the material in excess of "fair use."

The Survey makes no intellectual property claims to the products created by individual authors in the manuscript collections, except when the author deeded those rights to the Survey or when those authors were employed by the State of Arizona and created intellectual products as a function of their official duties. The Survey does maintain property rights to the physical and digital representations of the works.

## **QUALITY STATEMENT**

The Arizona Geological Survey is not responsible for the accuracy of the records, information, or opinions that may be contained in the files. The Survey collects, catalogs, and archives data on mineral properties regardless of its views of the veracity or accuracy of those data.

PRINTED: 08/08/2002

ARIZONA DEPARTMENT OF MINES AND MINERAL RESOURCES AZMILS DATA

PRIMARY NAME: SHEEP SPRINGS CINDER DEPOSIT

ALTERNATE NAMES:

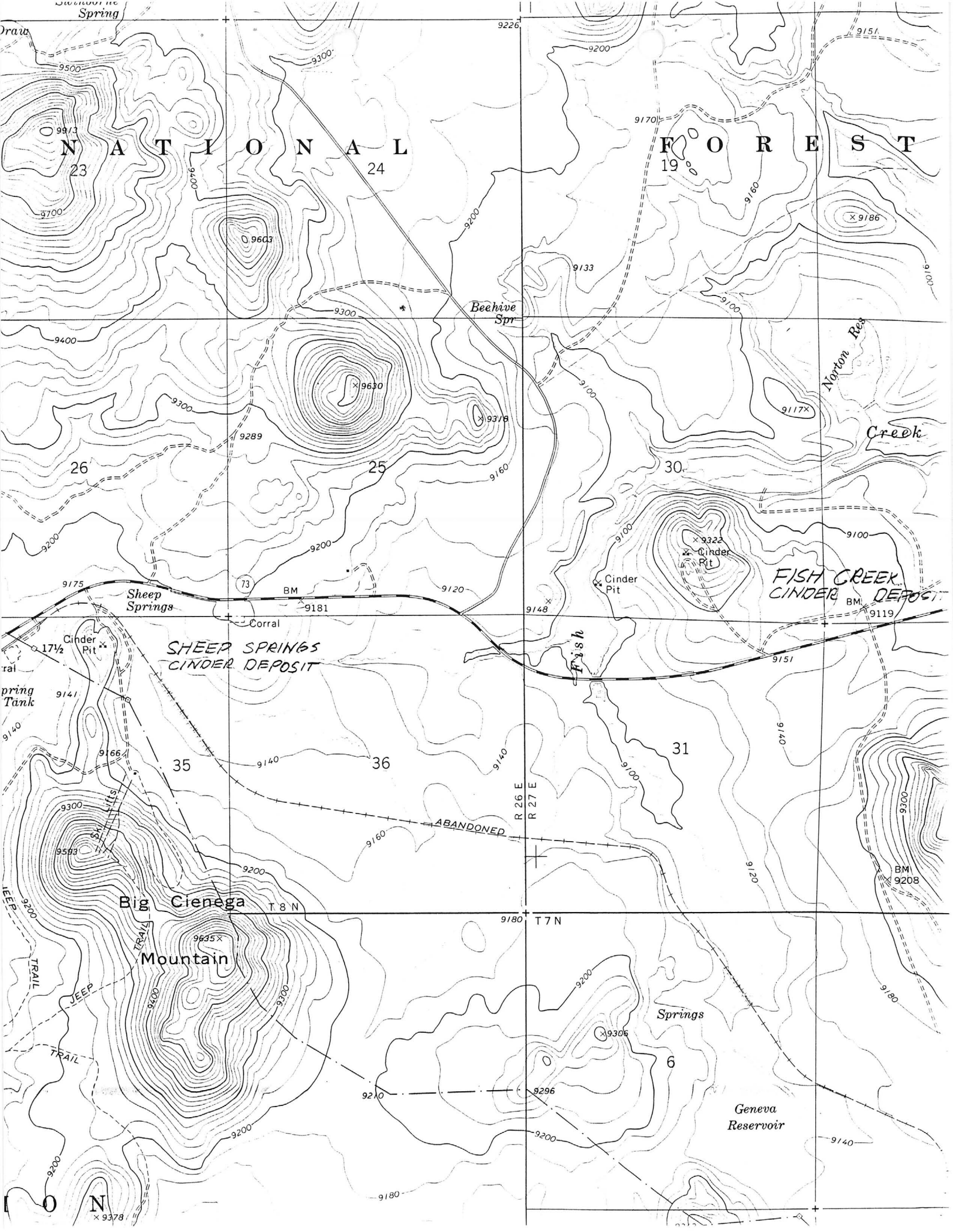
APACHE COUNTY MILS NUMBER: 230

LOCATION: TOWNSHIP 8 N RANGE 26 E SECTION 35 QUARTER NE  
LATITUDE: N 34DEG 03MIN 05SEC LONGITUDE: W 109DEG 34MIN 00SEC  
TOPO MAP NAME: GREENS PEAK - 7.5 MIN

CURRENT STATUS: UNKNOWN

COMMODITY:  
PUMICE CINDERS

BIBLIOGRAPHY:  
ADMMR SHEEP SPRINGS CINDER DEPOSIT FILE



NATIONAL FOREST

SHEEP SPRINGS  
CINDER DEPOSIT

FISH CREEK  
CINDER DEPOSIT

Big Cienega  
Mountain

Geneva  
Reservoir

ABANDONED

R 26 E  
R 27 E

T 7 N  
T 8 N

N

SHEEP SPRINGS CINDER DEPOSIT

APACHE COUNTY

KAP WR 10/2/87: A visit was made to the Sheep Springs Cinder Deposit in the NW 1/4, Sec 35, T8N R26E., Apache County. The deposit consists (as seen in a north-south production cut) of reddish brown cinders exposed on the north side of the hill overlain by dark gray cinders to the south. Both colrs have been produced. Past production has been over 30,000 yards, but the deposit is currently idle. Photographs were taken for the file.

---