



CONTACT INFORMATION

Mining Records Curator
Arizona Geological Survey
1520 West Adams St.
Phoenix, AZ 85007
602-771-1601
<http://www.azgs.az.gov>
inquiries@azgs.az.gov

The following file is part of the

Arizona Department of Mines and Mineral Resources Mining Collection

ACCESS STATEMENT

These digitized collections are accessible for purposes of education and research. We have indicated what we know about copyright and rights of privacy, publicity, or trademark. Due to the nature of archival collections, we are not always able to identify this information. We are eager to hear from any rights owners, so that we may obtain accurate information. Upon request, we will remove material from public view while we address a rights issue.

CONSTRAINTS STATEMENT

The Arizona Geological Survey does not claim to control all rights for all materials in its collection. These rights include, but are not limited to: copyright, privacy rights, and cultural protection rights. The User hereby assumes all responsibility for obtaining any rights to use the material in excess of "fair use."

The Survey makes no intellectual property claims to the products created by individual authors in the manuscript collections, except when the author deeded those rights to the Survey or when those authors were employed by the State of Arizona and created intellectual products as a function of their official duties. The Survey does maintain property rights to the physical and digital representations of the works.

QUALITY STATEMENT

The Arizona Geological Survey is not responsible for the accuracy of the records, information, or opinions that may be contained in the files. The Survey collects, catalogs, and archives data on mineral properties regardless of its views of the veracity or accuracy of those data.

08/08/88

ARIZONA DEPARTMENT OF MINES AND MINERAL RESOURCES FILE DATA

PRIMARY NAME: SHAEFERS TREASURE

ALTERNATE NAMES:

WEST TREASURE SHAFT
HIDDEN TREASURE

MOHAVE COUNTY MILS NUMBER: 140A

LOCATION: TOWNSHIP 27 N RANGE 20 W SECTION 12 QUARTER SW
LATITUDE: N 35DEG 44MIN 05SEC LONGITUDE: W 114DEG 22MIN 36SEC
TOPO MAP NAME: WHITE HILLS - 15 MIN

CURRENT STATUS: PAST PRODUCER

COMMODITY:

GOLD LODE
SILVER

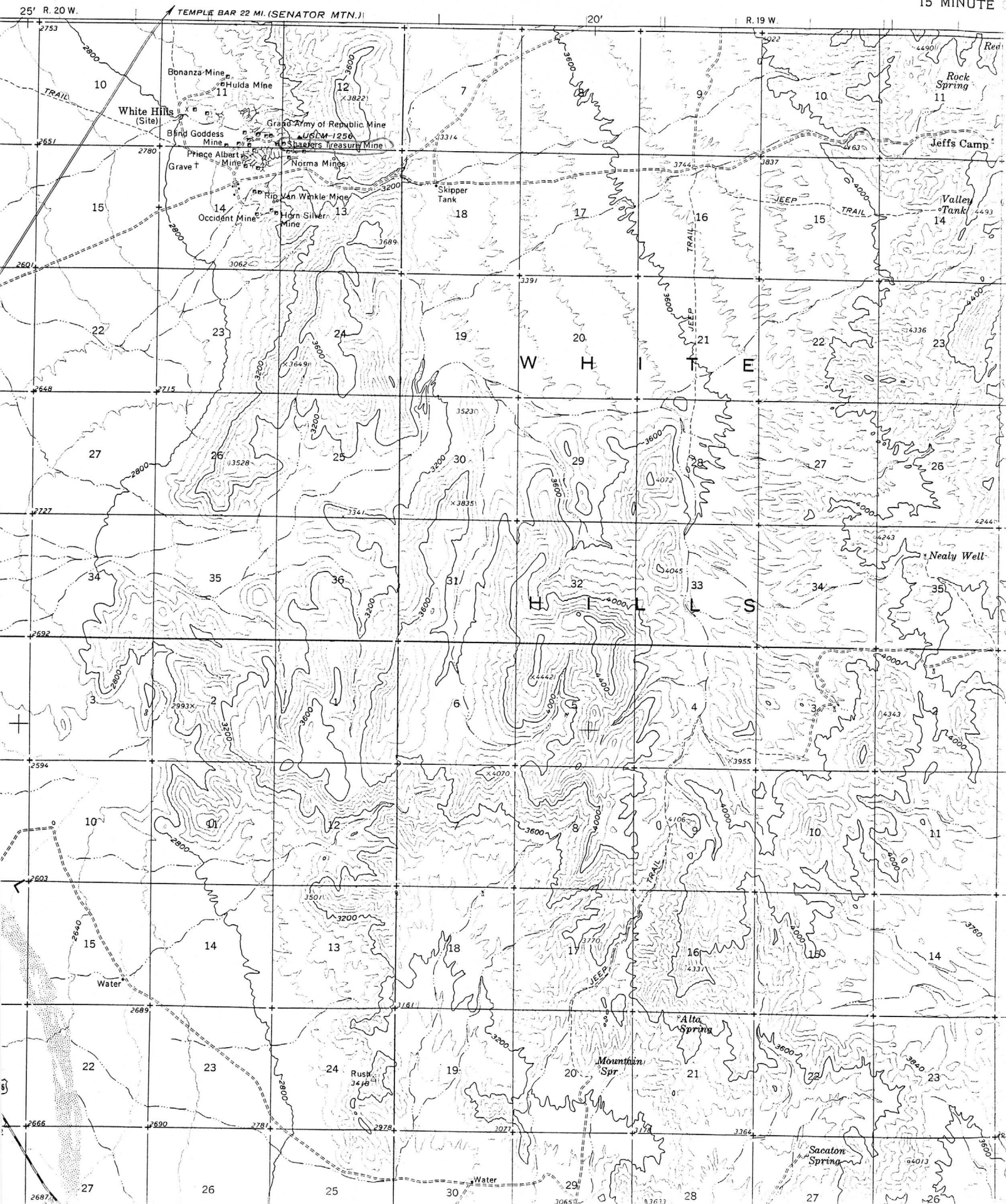
BIBLIOGRAPHY:

ADMMR MOHAVE CARD FILE
AZ. STATE LAND DEPT. MINERAL MAP
SCHRADER, F.C. USGS BULL 397, P. 132
ADMMR SHAEFERS TREASURE FILE
SEE ADMMR WHITE HILLS FILE

25' R. 20 W.

TEMPLE BAR 22 MI. (SENATOR MTN.)

R. 19 W.



Name of Mine or Prospect:	Township	Range	Section	Priority
Hidden Treasure	27N	20W	11 ddd	C
Principal Minerals:	1:250,000 Quad		7.5' - 15' Quad	
Gold, Silver	Kingman		White Hills	
Associated Minerals:	District		Principal Product	
Epidote, Quartz	White Hills		Gold and Silver	
Type of Operation:	County	State	Type of Deposit	
Underground	Mohave	Ar.	Vein	
Ownership or Controlling Interest:				
Consult current USBLM mining claim records				
Access: From Kingman, Ar. proceed north on U.S. 93 for 42 miles. Turn right on light duty road for 3.5 miles, take right fork and proceed 2 miles to White Hills district. Mine is shown (unnamed) on topographic quadrangle.				
Structural Control or Geological Association:				
"The country rock is amphibolite schist, which near the mine is greenish from the presence of epidote. The vein strikes N80°E and dips 70°N. The vein is about 3 feet thick and is accompanied by 2 inches of reddish-brown oxidized gouge, between which and the rock wall of the fissure is an inch or two of greenish crushed rock gouge." ¹				
Age of Mineralization:				
Production History		Geochemical Analyses		
References				
1) Schrader (1909) p. 131-132.				
2) CETA map file Rack #28, claim, underground map.				

Name of Mine or Prospect: (Schaffers) Treasure Mine	Township 27N	Range 20N	Section 12 ccc	Priority B
Principal Minerals: Gold, Silver	1:250,000 Quad Kingman		7.5' - 15' Quad White Hills	
Associated Minerals: Quartz, Calcite	District White Hills		Principal Product Gold, Silver	
Type of Operation: Underground: Shaft, Adits	County Mohave	State Ar.	Type of Deposit Vein	
Ownership or Controlling Interest: Consult tax assessment records				
Access: From Kingman, Ar. proceed north on U.S. 93 for 42 miles. Turn right on light duty road for 3.5 miles; bear right and proceed 2 miles to district. Mine is shown on topographic quadrangle.				
Structural Control or Geological Association: "Older Precambrian Age; granite gneiss." ³				
Age of Mineralization:				
Production History		Geochemical Analyses		
Patented claim Bk #317 MS #1256 & A				
References				
1) CETA map file, Rack #26, underground and claim maps. 2) Schrader (1909) p. 127-130. 3) Wilson & Moore (1959) Geologic map.				

SEE: White Hills (file) Mohave County

24