



CONTACT INFORMATION

Mining Records Curator
Arizona Geological Survey
1520 West Adams St.
Phoenix, AZ 85007
602-771-1601
<http://www.azgs.az.gov>
inquiries@azgs.az.gov

The following file is part of the

Arizona Department of Mines and Mineral Resources Mining Collection

ACCESS STATEMENT

These digitized collections are accessible for purposes of education and research. We have indicated what we know about copyright and rights of privacy, publicity, or trademark. Due to the nature of archival collections, we are not always able to identify this information. We are eager to hear from any rights owners, so that we may obtain accurate information. Upon request, we will remove material from public view while we address a rights issue.

CONSTRAINTS STATEMENT

The Arizona Geological Survey does not claim to control all rights for all materials in its collection. These rights include, but are not limited to: copyright, privacy rights, and cultural protection rights. The User hereby assumes all responsibility for obtaining any rights to use the material in excess of "fair use."

The Survey makes no intellectual property claims to the products created by individual authors in the manuscript collections, except when the author deeded those rights to the Survey or when those authors were employed by the State of Arizona and created intellectual products as a function of their official duties. The Survey does maintain property rights to the physical and digital representations of the works.

QUALITY STATEMENT

The Arizona Geological Survey is not responsible for the accuracy of the records, information, or opinions that may be contained in the files. The Survey collects, catalogs, and archives data on mineral properties regardless of its views of the veracity or accuracy of those data.

PRINTED: 10-11-2012

ARIZONA DEPARTMENT OF MINES AND MINERAL RESOURCES AZMILS DATA

PRIMARY NAME: SELIGMAN CROSSING

ALTERNATE NAMES:

YAVAPAI COUNTY MILS NUMBER: 1437

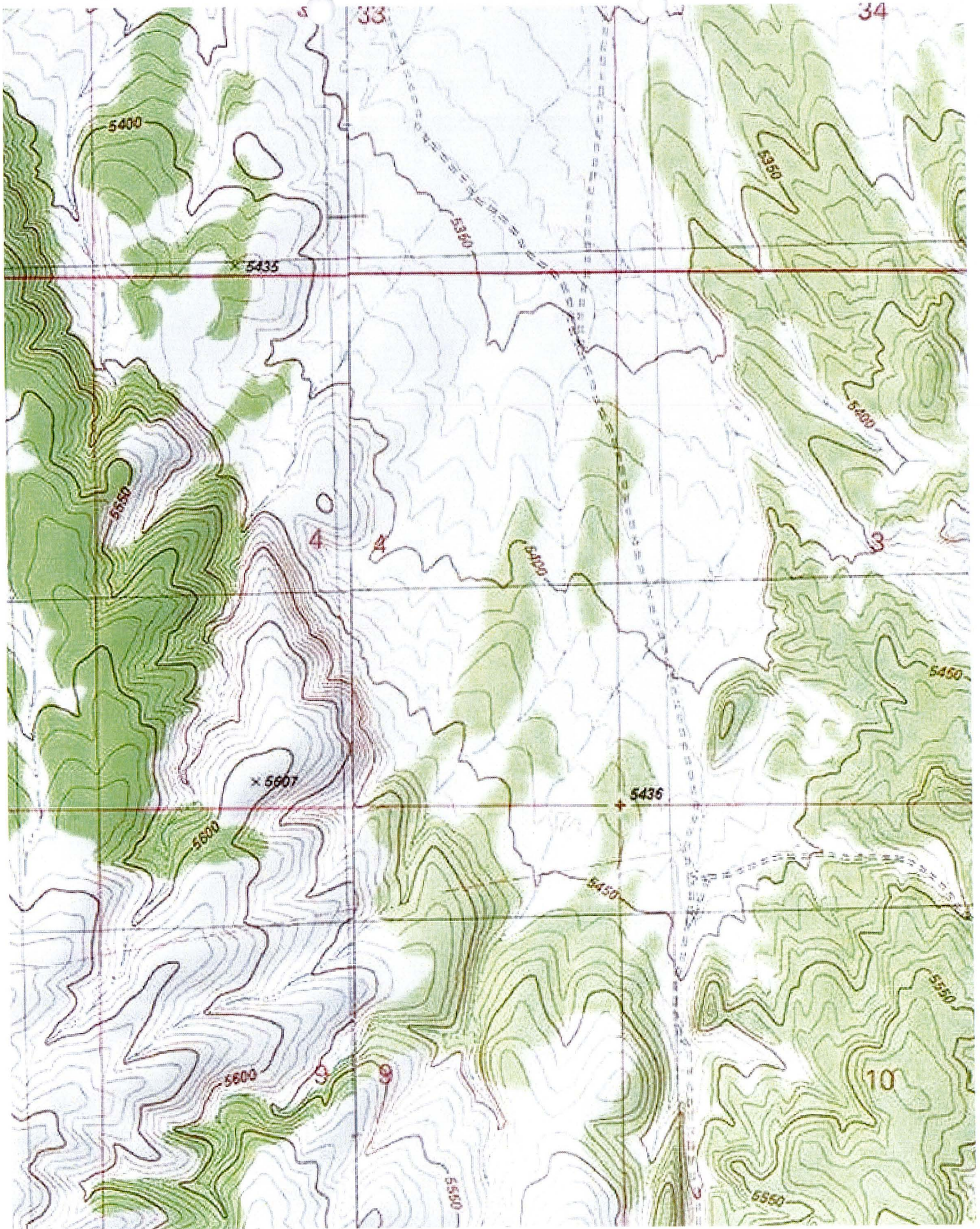
LOCATION: TOWNSHIP 23 N RANGE 8 W SECTION 04 QUARTER
LATITUDE: N 35DEG 24MIN 47SEC LONGITUDE: W 113DEG 07MIN 08SEC
TOPO MAP NAME: AUDLEY - 7.5 MIN

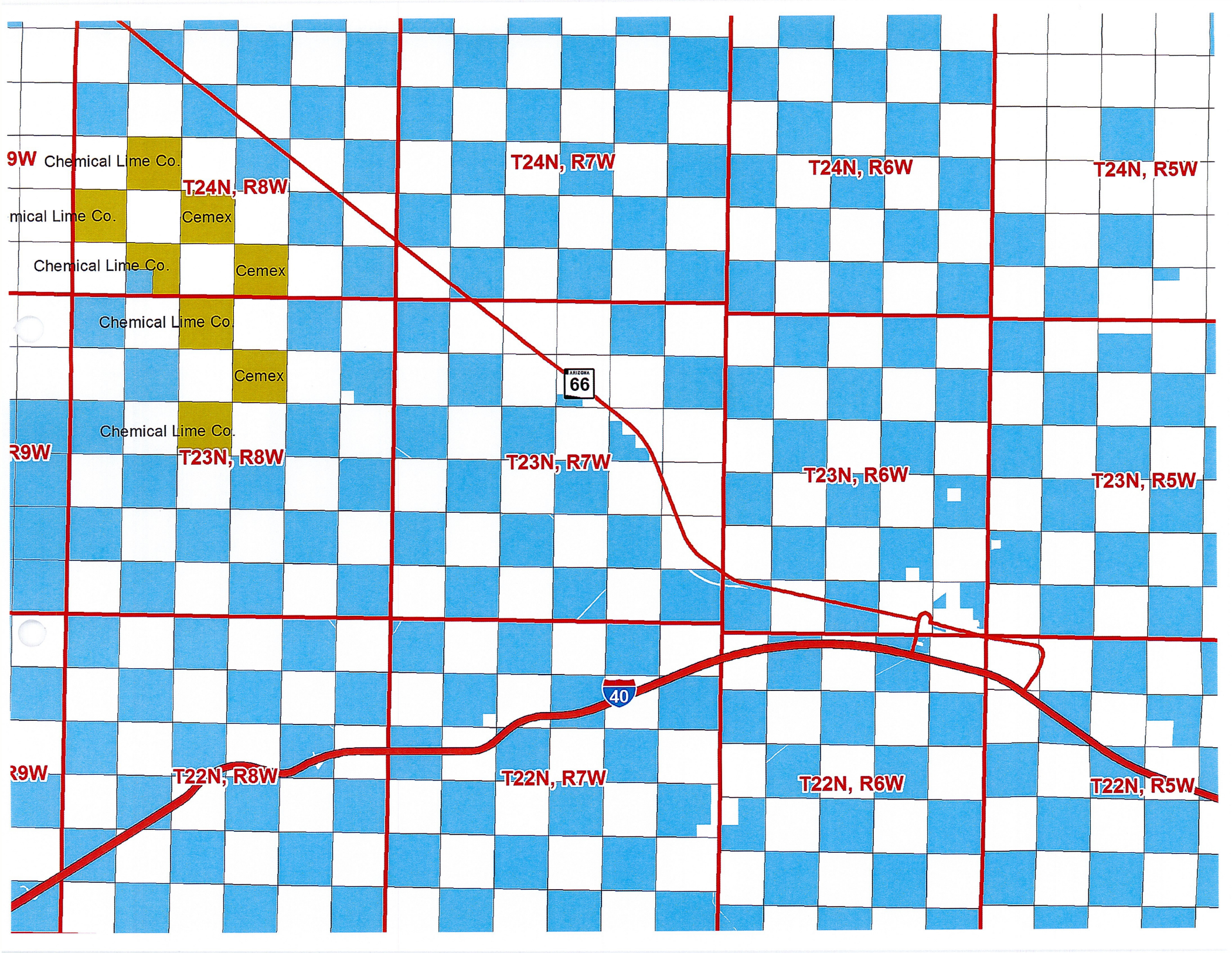
CURRENT STATUS: UNK

COMMODITY:
CALCIUM

STONE

BIBLIOGRAPHY:
ADMMR SELIGMAN CROSSING FILE
EXACT LOCATION UNCERTAIN
PROPOSED CEMENT PLANT





9W Chemical Lime Co.

T24N, R8W

T24N, R7W

T24N, R6W

T24N, R5W

Chemical Lime Co.

Cemex

Chemical Lime Co.

Cemex

Chemical Lime Co.

Cemex

ARIZONA
66

9W

Chemical Lime Co.

T23N, R8W

T23N, R7W

T23N, R6W

T23N, R5W

9W

T22N, R8W

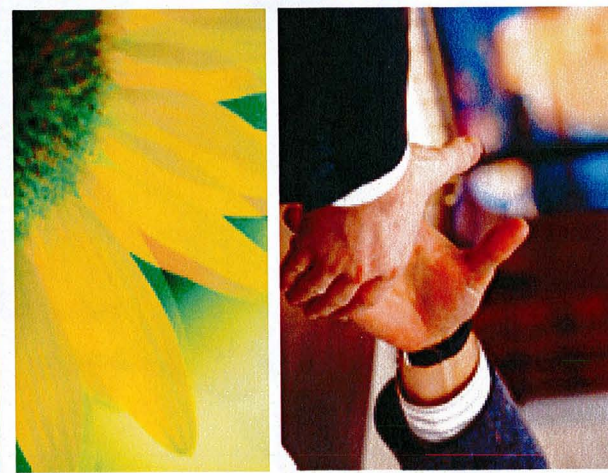
T22N, R7W

T22N, R6W

T22N, R5W

40

SELLIGMAN CROSSING



Building better communities for tomorrow
by providing needed resources today

creating jobs
improving schools
environmental sustainability



With over 100 years of industry experience, CEMEX is one of the leading global producers of cement, ready-mix concrete, and aggregates. As the largest manufacturer and seller of cement in the United States, CEMEX products are among the most essential building blocks of modern society.

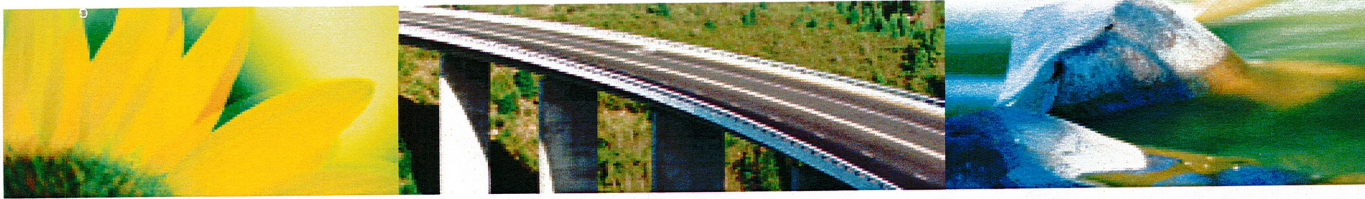
CEMEX also understands the importance of **sustainable development**, and continually seeks ways to **reduce** the environmental impact of its operations by **balancing** materials **demand** with a **commitment** to **environmental sustainability**. CEMEX is committed to providing **safe, healthy, and fair workplaces** for employees, and bringing about **positive change** in our society.

For nearly 20 years, CEMEX has been a **good neighbor** and **business partner** in **Arizona**. CEMEX currently **employs 2,400 Arizonans** — with a payroll of over **\$100 million** — at nearly **120 facilities** throughout the state.

Experience Counts

With a proven track record as a good neighbor and business partner in Arizona, CEMEX is committed to environmental sustainability





Commitment to Community

CEMEX makes the products that build the communities we call home

CEMEX is committed to:

- Helping cities and businesses realize their potential
- Forming the architecture of our communities
- Building the foundations we call home

CEMEX is committed to the environment:

Corporate environmental responsibility is the foundation of all that we are and all that we do. CEMEX is committed to **balancing** materials **demand** with a commitment to **environmental sustainability**. At CEMEX, our environmental **philosophy** is based on the belief that the **world we share is given to us in trust**, there-

fore, we ensure we conduct our business with **respect** and **care** for the environment.

By teaming up with local and national **environmental groups** such as Conservation International, World Wildlife Fund, Keep America Beautiful, Adopt-A-Highway and Wildlife Habitat Council — CEMEX **sponsors environmental projects** and programs that **benefit the community**.

Since 2000, CEMEX has purchased more than 295,000 acres of land and has entered into **conservation agreements** with adjoining private landowners for an additional 148,000 acres.

“CEMEX is a responsible steward of 10,000 acres of forest land and a leader in using state-of-the-art, low-emission technology in its cement plant. I appreciate the company’s role as a leading local employer and its close relationship with the community of Davenport. CEMEX Davenport has shown they are truly committed to making good environmental decisions, for our land, oceans, coastal watersheds and air.”

— Fred Keeley, Treasurer, Santa Cruz County, California

“The employees at these CEMEX cement plants... should be commended for their ability to reduce energy use and protect the environment through energy efficiency. Strong energy performance in a corporation starts at the top, and your commitment and support can help CEMEX reach new levels of achievement.”

— Jean Lupinacci, EPA & DOE’s ENERGY STAR Commercial and Industrial Branch Director, written in her letter to CEMEX USA President Gilberto Perez

CEMEX Partners in Environmental Sustainability



CEMEX’s Louisville, Ky., Davenport, Calif., and Clinchfield, Ga. cement plants were the first cement facilities in the U.S. to receive the 2007 ENERGY STAR rating by the U.S. EPA and the Department of Energy (DOE).

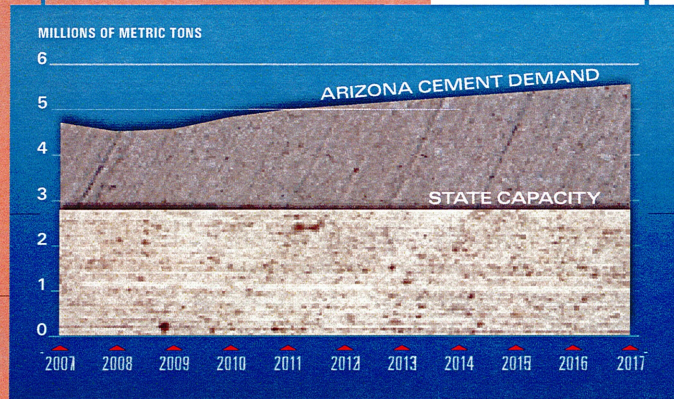
- Conservation International
- International League of Conservation Photographers
- North America Nature Photographer Association
- Wildlife Habitat Council
- Marine Mammal Center
- Save Our Shores
- Keep America Beautiful
- Adopt-A-Highway
- ENERGY STAR
- U.S. Green Building Council
- World Business Council for Sustainable Development

Supply Shortage

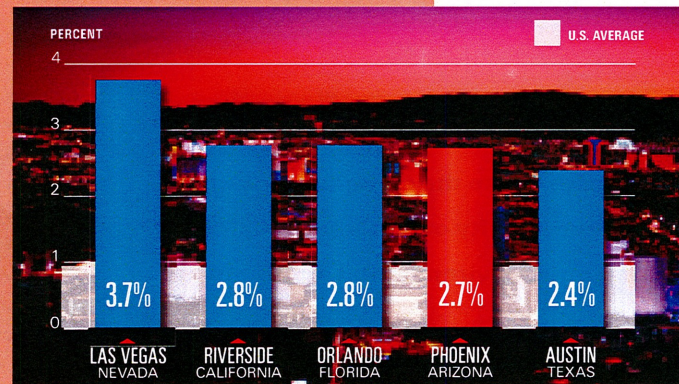
The southwestern U.S. is encountering a significant materials shortage

The southwestern United States is encountering a **significant materials shortage** — causing **delays** in building and construction while **increasing the price** of cement, ready-mix concrete, and aggregates. This **shortage** is caused by a **lack of manufacturing capability** in the region.

Phoenix and its suburbs represent one of the **fastest-growing** major markets for **cement consumption** in the U.S.



ARIZONA SUPPLY AND DEMAND



TOP 5 POPULATION GROWTH

CEMEX Solution

Ensure a steady supply of cement to the southwestern U.S. for the foreseeable future with a new

state-of-the-art cement production facility: Seligman Crossing

By utilizing **efficient energy** sources, **limited** amounts of **water**, and **state-of-the-art** manufacturing **technology**, the Seligman Crossing project will **provide needed materials** to fast-growing western U.S. markets **efficiently** and **cost-effectively**.

CEMEX is committed to **balancing the demand** for development in the region with **environmental sustainability** to ensure the **utmost success** for **Arizona's future**.

With more than **90%** of the product being **used in Arizona**, the Seligman Crossing project will **positively affect** the lives of **Arizonans** and **promote** Arizona's **economic growth** and **development**.



SELIGMAN CROSSING SITE

“To create the bedrock that will support our 21st century communities and economy, I am proposing a series of strategies that will build and protect what we call ‘infrastructure.’ It includes roads, water supply and land preservation; it also includes housing, health care and careful, coordinated growth planning.”

— Arizona Governor Janet Napolitano, 2007 State of the State Address

Why Seligman Crossing?

A unique combination of natural and man-made components makes Seligman Crossing an ideal location



CORE SAMPLE OF 50+ YEAR RESERVE OF LIMESTONE AVAILABLE AT THE SELIGMAN CROSSING SITE

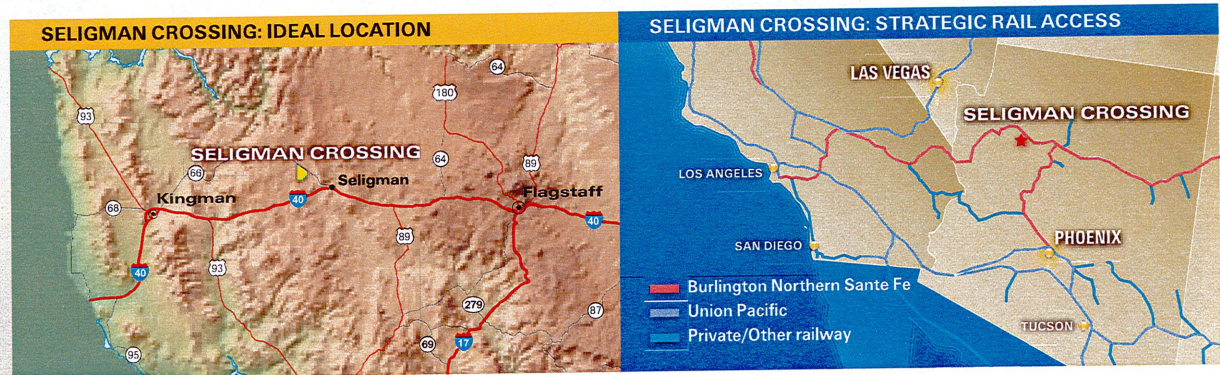
Seligman Crossing has **three key components** to develop a state-of-the-art cement manufacturing facility:

- 50+ year reserve of limestone
- Permitting feasibility
- Rail access — strategically located between Kingman and Flagstaff, adjacent to the Burlington Northern Sante Fe Railway

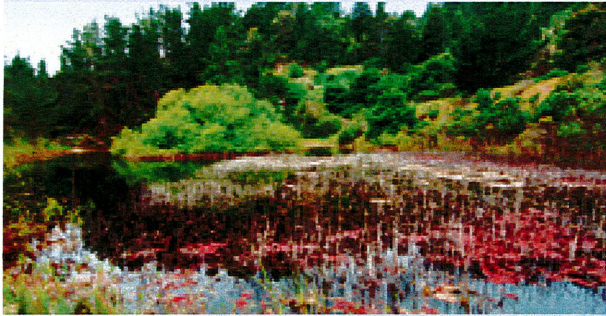
The site location has one of the **lowest population** densities anywhere in the southwestern U.S.

The site consists of more than 7,400 acres of **private land**. The actual cement plant and quarry will occupy **less than 15%** of this, allowing **ample land for conservation** purposes.

By building a **new state-of-the-art** cement production facility, CEMEX will **provide needed materials** to the fast-growing U.S. markets **efficiently** and **cost-effectively**, ensuring a **steady supply of cement to Arizona** for decades to come.



AIR & WATER



“CEMEX does a great job on the environmental front. We don’t have any problems. Their facility sits right on top of pristine Pensacola Bay. Since they’ve been in operations, I don’t know of any environmental complaints from a products standpoint or a noise standpoint...CEMEX is probably an A+ tenant in my eyes. They are good neighbors with us and the community.”

—Clyde E. Mathis, Port Director of the Port of Pensacola, Florida

The Seligman Crossing plant is being designed to **meet or exceed the most stringent national ambient air quality standards** in order to have a negligible impact on the visibility of Class 1 areas, such as the Grand Canyon National Park.

The plant will include **world-class technology** recognized by the **U.S. Environmental Protection Agency (EPA)** as the **best available**, including:

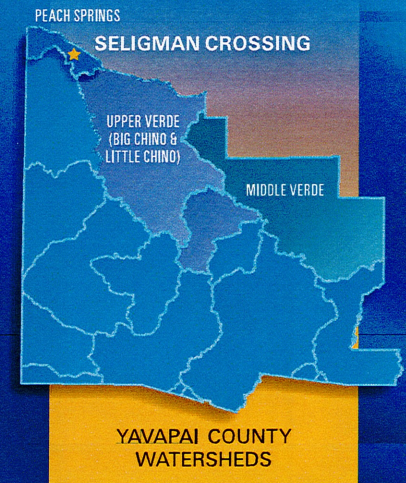
- Staged combustion Low NOx Calciner
- Low NOx Kiln Burner
- Selective Non-Catalytic Reduction (SNCR) for NOx reduction
- High-efficiency Finish Grinding Process to minimize electricity consumption
- High-efficiency Preheater and Clinker Cooler to minimize fuel and electricity consumption and related CO2 emissions
- State-of-the-art fabric filter Dust Collectors
- World-class material handling and storage systems for dust control
- Continuous Emissions Monitoring Systems (CEMS) to ensure environmental compliance

World-class technology means the most stringent national air quality standards will be met

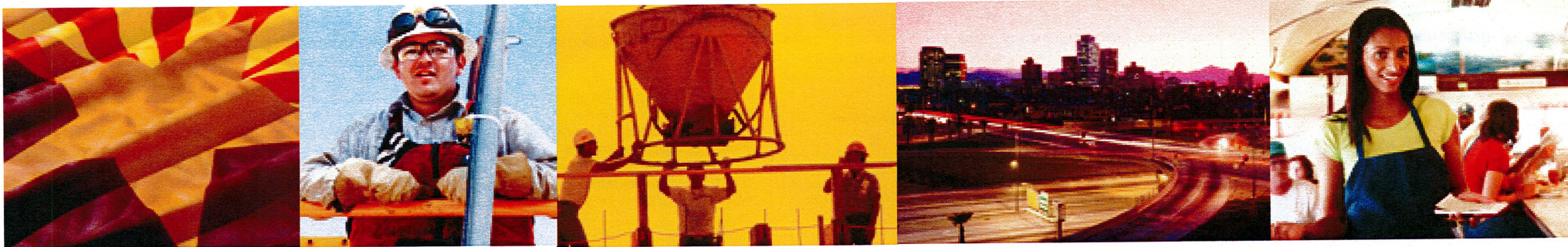
The site is located in the Peach Springs Basin, north of the Upper Verde watershed. Groundwater usage within the Peach Springs Basin **does not** affect the Middle or Upper Verde Basins.

Groundwater availability in and around the project is relatively un-researched. However, as a recent United States Geological Survey (USGS) report indicates, there is an **estimated 1,000,000 acre feet** of recoverable groundwater that rests within Aubrey Valley.

By employing a variety of **water conservation practices**, the cement manufacturing facility at Seligman Crossing will use approximately **500 acre feet** of water per year. This, combined with current water uses in the Aubrey Valley, **will not significantly impact groundwater supplies** in the Peach Springs Basin.



State-of-the-Art Environmental Practices



Local Benefits for Arizona

Seligman Crossing will enhance the local economy with products produced by a local labor force to meet the growing needs of Arizona

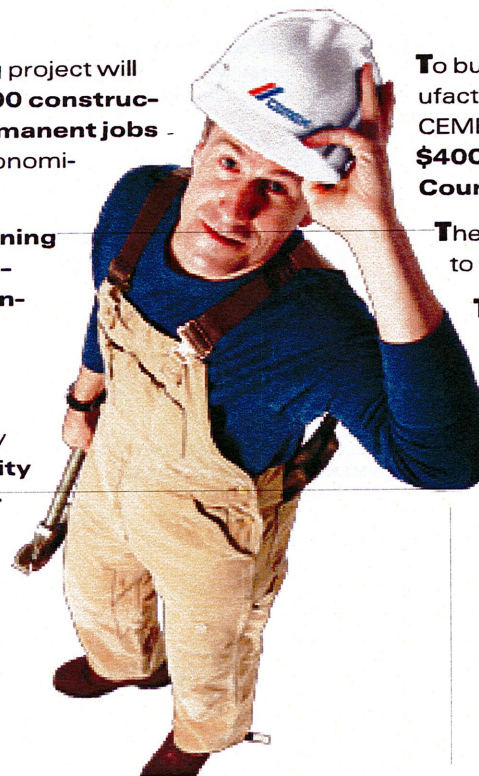
The products from the Seligman Crossing site will be produced by **Arizonans for Arizonans**.

- More than **90%** of the product from the Seligman Crossing site will be **used in Arizona**, helping to **stabilize material supply** in Arizona and **enhancing the local economy**.
- The need to import materials will decrease. The product will help meet the demand for **robust growth** and **development** in Arizona in the most **cost-efficient** manner.

The Seligman Crossing project will bring approximately **700 construction jobs** and **110 permanent jobs to Arizonans** in an economically distressed area.

CEMEX will create **training and employment programs** for the **next generation** of workers.

New jobs created by the Seligman Crossing project will also directly **benefit the community** by providing **safe, reliable, long-term** and **quality work** for local residents.



To build a **state-of-the-art** cement manufacturing facility at Seligman Crossing, CEMEX will **invest \$300 million to \$400 million** in **northern Yavapai County**.

The project will **contribute** significantly to the **tax base** and **local economy**.

These **new tax dollars** will be **infused** into the **school system**, **public safety**, services such as **health care** and other necessary **infrastructure**.

CEMEX Recent Environmental Awards and Partners

CEMEX USA

- 2007 EcoVisionary Award: CEMEX USA was recognized for its outstanding contributions to environmental protection and conservation awareness at the first-ever EcoVision conference in Washington, D.C. on April 18, 2007.

DAVENPORT CEMENT PLANT (CALIF)

- 2007 ENERGY STAR Rating from the U.S. Environmental Protection Agency & U.S. Department of Energy for demonstrating ability to reduce energy use and protect the environment through energy efficiency
- 2006 Land Stewardship Award, Cement Industry's Environment and Energy Award, PCA and Cement America's Magazine
- 2006 Outreach Award Finalist and overall Environmental Excellence Award Finalist, Cement Industry's Environment and Energy Award, PCA and Cement America's Magazine

LOUISVILLE CEMENT PLANT (KY)

- 2007 ENERGY STAR Rating from the U.S. Environmental Protection Agency & U.S. Department of Energy for demonstrating ability to reduce energy use and protect the environment through energy efficiency

CLINCHFIELD CEMENT PLANT (GA)

- 2007 ENERGY STAR Rating from the U.S. Environmental Protection Agency & U.S. Department of Energy for demonstrating ability to reduce energy use and protect the environment through energy efficiency

KNOXVILLE CEMENT PLANT (TENN)

- 2006 Innovation Award, Cement Industry's Environment and Energy Award, PCA and Cement America's Magazine
- 2005 Innovative Technology Award, Cement Industry's Environment and Energy Award, PCA and Cement America's Magazine
- 2002 Community Outreach, Cement Industry's Environment and Energy Award, PCA and Cement America's Magazine

FAIRBORN CEMENT PLANT (OHIO)

- 2006 Volunteer of the Year Award, City of Fairborn Parks & Recreation Department
- Backyard Habitat Award, BW Greenway Land Trust
- 2005 Land Stewardship Award, Cement Industry's Environment and Energy Award, PCA and Cement America's Magazine

WAMPUM QUARRY (PA)

- 2005 Runner Up, Land Stewardship Award, PCA and Cement America's Magazine

WAMPUM CEMENT PLANT (PA)

- North County Trail Award, North County Trail Assoc.

ARIZONA READY-MIX FACILITIES

- Apache Junction: 2006 Environmental Excellence Award, Best Ready-mix Plant, NRMCA
- 2006 Environment Leadership Award, National Stone, Sand and Gravel Assoc.

TEXAS READY-MIX FACILITY

- Katy: 2006 Public Appearance & Environmental Award, NRMCA

CAROLINAS READY-MIX FACILITIES

- Mauldin: 2007 Environmental Excellence Award (category A), Carolinas RMCA
- Landrum: 2007 Environmental Excellence Award (category A), Second Place, Carolinas RMCA
- Boeing: 2007 Environmental Excellence Award (category B), Tie with CEMEX's Chandler, Carolinas RMCA
- Chandler: 2007 Environmental Excellence Award (category B), Tie with CEMEX's Boeing, Carolinas RMCA
- Stokesdale: 2006 Environmental Excellence Award (category A), Carolinas RMCA
- Morrisville: 2006 Environmental Excellence Award (category B), Carolinas RMCA

OTHER MENTIONS FROM PAST YEARS:

- Texas Ready-mix Cutten Plant won First Place in Category C (more than 100,000 cubic yards of annual production), NRMCA
- The Cutten Plant also won First Place in the Comeback Kid category, NRMCA
- The Cutten Plant also received the "Most Improved Plant" in 2004 from the Texas Aggregates and Concrete Association for its capital investment projects that upgraded the facility to a state-of-the-art ready-mix plant.
- CEMEX Navigation Plant in Houston, Texas received Honorable Mention. (This is the fourth award won by CEMEX's Houston ready-mix facilities in the past two years.)
- Several CEMEX Florida ready-mix plants have also received the Environmental Excellence Award in previous years demonstrating the company's commitment to environmental stewardship, NRMCA

CEMEX'S U.S. PARTICIPATION WITH ENVIRONMENTAL ORGANIZATIONS:

- Conservation International
- International League of Conservation Photographers
- North American Photographer Association
- Wildlife Habitat Council
- Marine Mammal Center in Sausalito, Calif.

- Save Our Shores in Davenport, Calif.
- Keep America Beautiful
- Adopt-A-Highway
- ENERGY STAR Program Corporate sponsor (joint program of the U.S. EPA and DOE)
- U.S. Green Building Council, a national coalition of building industry leaders working to promote buildings that are environmentally responsible and profitable as well as healthy places in which to live and work.
- World Business Council for Sustainable Development
- Portland Cement Association
- National Ready-mixed Concrete Association
- National Stone, Sand & Gravel Association
- Arizona Rock Products Association
- Carolinas Ready-mixed Concrete Association
- Florida Concrete Products Association
- Southern California Rock Products Association
- Southern California Ready-mix & Concrete Association
- Texas Aggregate and Concrete Association

CEMEX'S GLOBAL AWARDS

- World Environmental Center's Gold Medal for International Corporate Achievement in 2002

PRIORITIES & PARTNERSHIPS

We partner with local governments, universities, peers, conservation groups, and other institutions to have a greater impact on environmental preservation. We work with these organizations to support wildlife conservation projects around the world, including:

- Conservation International: projects in Mexico, Venezuela, the United States, Colombia, Brazil, the Philippines, and Indonesia
- North America Nature Photographer Association: a project in the United States
- World Wildlife Fund: a multinational project
- The Wild Foundation
- Agrupación Sierra Madre: more than 24 projects in Mexico
- United for Conservation Campaign: three projects in Mexico
- Nature Defense Foundation: a project in Venezuela
- Governing Commission for the Banco de la Plata Humpback
- Whale Sanctuary: a project in the Dominican Republic
- National Association for the Conservation of Nature: a project in Panama
- Nature Foundation: a project in Colombia
- PRONATURA: several projects in Mexico
- Fudena: a project in Venezuela
- CEFPEDES: strategic studies for sustainable development in Mexico

SPECIAL PROJECTS

- Member of the World Business Council for Sustainable Development, and through WBCSD, a founding member of the Cement Sustainability Initiative (CSI) – a project that continues to look for contributions in climate protection, fuels and raw materials conservation, continual improvements in employee health and safety, emissions reduction, and other key areas.
- CEMEX Conservation Book series: Since 1993, CEMEX began a book program with major conservation organizations including Conservation International, the World Wildlife Fund, the Wildlife Conservation Society and the World Conservation Union, to support a wide array of conservation projects through the publishing and donation of fine art coffee table books that highlight critically important conservation issues. The CEMEX conservation book series aims to bring awareness to the world's most threatened and precious wild spaces.
- El Carmen: One of our most successful initiatives is the El Carmen conservation area, which is a protected area that straddles the Mexico - U.S. border. In partnership with Agrupación Sierra Madre and others, we are working to preserve this unique ecosystem and the hundreds of plant, bird, mammal, reptile, and amphibian species that depend on it for survival. El Carmen covers more than 185,000 acres and is part of one of the largest and most biodiverse transfrontier conservation areas in North America. As part of this effort, CEMEX has also helped to successfully reintroduce the desert bighorn sheep, which had been eliminated from the region over 60 years ago.



www.cemexusa.com

To find out more about
Seligman Crossing visit:
www.cemexusa.com/seligman



PRINTED ON RECYCLED PAPER



UNITED STATES

[HOME](#) [CONTACT US](#) [SITE MAP](#) [CEMEX.COM](#) [REGISTER](#) [SEARCH](#)
[CEMENT](#) [READY MIX](#) [AGGREGATES](#) [OTHER PRODUCTS](#) [CEMEX CARES](#) [CAREERS](#) [ABOUT CEMEX](#)
[COMPANY PROFILE](#) [OUR HISTORY](#) [INDUSTRY PARTNERS](#) [MANAGEMENT TEAM](#) [MEDIA CENTER](#) [DOWNLOADS](#)

Press releases


[Contact information](#) [Press releases](#) [Awards](#)

CEMEX Plans \$400 Million State-of-the-Art Cement Manufacturing Facility in AZ

HOUSTON, Texas - September 18, 2007 - CEMEX, Inc. announced today that it intends to begin the permitting process for the construction of a 1.9 million short ton cement manufacturing facility near Seligman, Ariz. CEMEX will invest approximately \$400 million over five years in the Seligman Crossing Plant, which is expected to begin operations by 2012. The state-of-the-art facility will manufacture cement to serve the growing needs of Arizona, including the Phoenix metropolitan area.

"CEMEX is committed to balancing the demand for development in the region with environmental sustainability to ensure the utmost success for Arizona's future," said Gilberto Perez, President of CEMEX USA. "By utilizing efficient energy sources, limited amounts of water, and state-of-the-art manufacturing and environmental technologies, the Seligman Crossing project will provide much needed building materials to the state of Arizona efficiently and cost-effectively, while also creating jobs and infusing payroll and tax dollars into the region."

The historical shortage of building materials in Arizona and the southwestern United States, coupled with demographic trends that show robust population growth throughout the region, reinforces the need for the CEMEX Seligman Crossing Plant. The plant will generate significant employment opportunities for northern Arizona, both during the construction and operational phases of the project. The Seligman Crossing Plant will also provide a considerable tax base for the support of local schools, services and public infrastructure.

An application for an air permit with the Arizona Department of Environmental Quality is expected to be filed by year-end 2007 detailing CEMEX's plans to build an environmentally sensitive, state-of-the-art manufacturing facility. During the pre-filing phase of the project, CEMEX has reached out to public officials, tribal nations, residents and neighboring communities, as well as environmental and business organizations, to share many of the details of the new plant and to receive their feedback. CEMEX will continue to reach out to these interested groups as the project progresses.

CEMEX has a solid record of involvement in the communities in which it does business, as well as an ongoing commitment to environmental excellence and sustainability. CEMEX has been recognized for its environmental record in Arizona and throughout the U.S., including receiving the 2007 Bronze Environmental Excellence Awards for three ready-mix locations in Phoenix and Tucson. In addition, three of CEMEX's cement manufacturing facilities across the country were the first to receive the 2007 ENERGY STAR rating from the U.S. Environmental Protection Agency and the Department of Energy for demonstrating their ability to reduce energy use and protect the environment through energy efficiency.

As a strong business partner in Arizona for nearly 20 years, CEMEX currently employs 2,400 Arizonans at more than 120 facilities throughout the state. On an annual basis, its Arizona operations provide a positive impact on its communities through a combined payroll of more than \$100 million and millions more in taxes and regulatory agency fees to local and state governments.

CEMEX is a growing global building materials company that provides high quality products and reliable service to customers and communities in more than 50 countries throughout the world. CEMEX has a rich history of improving the well-being of those it serves through its efforts to pursue innovative industry solutions and efficiency advancements and to promote a sustainable future. For more information, visit www.cemexusa.com.

Media Contact:
Jennifer Borgen
External Communications Manager
713-650-6200

This press release contains forward-looking statements and information that are necessarily subject to risks, uncertainties and assumptions. Many factors could cause the actual results, performance or achievements of CEMEX to be materially different from those expressed or implied in this release, including, among others, changes in general economic, political, governmental and business conditions globally and in the countries in which CEMEX does business, changes in interest rates, changes in inflation rates, changes in exchange rates, the level of construction generally, changes in cement demand and prices, changes in raw material and energy prices, weather conditions, changes in business strategy and various

Related Links

[Safety & Health](#)
Learn about our commitment for a safe and healthy workplace

[CEMEX and the Environment](#)
Learn more about CEMEX's environmental initiatives

[Our history](#)
Learn more about our history

other factors. Should one or more of these risks or uncertainties materialize, or should underlying assumptions prove incorrect, actual results may vary materially from those described herein. CEMEX assumes no obligation to update or correct the information contained in this press release.

EBITDA is defined as operating income plus depreciation and amortization. Free Cash Flow is defined as EBITDA minus net interest expense, maintenance and expansion capital expenditures, change in working capital, taxes paid, and other cash items (net other expenses less proceeds from the disposal of obsolete and/or substantially depleted operating fixed assets that are no longer in operation). Net debt is defined as total debt minus the fair value of cross-currency swaps associated with debt minus cash and cash equivalents. The net debt to EBITDA ratio is calculated by dividing net debt at the end of the quarter by EBITDA for the last twelve months. All of the above items are derived from generally accepted accounting principles in Mexico. EBITDA and Free Cash Flow (as defined above) are presented herein because CEMEX believes that they are widely accepted as financial indicators of CEMEX's ability to internally fund capital expenditures and service or incur debt. EBITDA and Free Cash Flow should not be considered as indicators of CEMEX's financial performance, as alternatives to cash flow, as measures of liquidity or as being comparable to other similarly titled measures of other companies.



back

[Investor Relations Disclaimer](#) | [Terms and conditions](#) | Copyright © 2008 CEMEX S.A.B. de C.V. All rights reserved