



CONTACT INFORMATION

Mining Records Curator
Arizona Geological Survey
1520 West Adams St.
Phoenix, AZ 85007
602-771-1601
<http://www.azgs.az.gov>
inquiries@azgs.az.gov

The following file is part of the

Arizona Department of Mines and Mineral Resources Mining Collection

ACCESS STATEMENT

These digitized collections are accessible for purposes of education and research. We have indicated what we know about copyright and rights of privacy, publicity, or trademark. Due to the nature of archival collections, we are not always able to identify this information. We are eager to hear from any rights owners, so that we may obtain accurate information. Upon request, we will remove material from public view while we address a rights issue.

CONSTRAINTS STATEMENT

The Arizona Geological Survey does not claim to control all rights for all materials in its collection. These rights include, but are not limited to: copyright, privacy rights, and cultural protection rights. The User hereby assumes all responsibility for obtaining any rights to use the material in excess of "fair use."

The Survey makes no intellectual property claims to the products created by individual authors in the manuscript collections, except when the author deeded those rights to the Survey or when those authors were employed by the State of Arizona and created intellectual products as a function of their official duties. The Survey does maintain property rights to the physical and digital representations of the works.

QUALITY STATEMENT

The Arizona Geological Survey is not responsible for the accuracy of the records, information, or opinions that may be contained in the files. The Survey collects, catalogs, and archives data on mineral properties regardless of its views of the veracity or accuracy of those data.

PRINTED: 03/17/2003

ARIZONA DEPARTMENT OF MINES AND MINERAL RESOURCES AZMILS DATA

PRIMARY NAME: SCHENECTADY

ALTERNATE NAMES:

MOHAVE COUNTY MILS NUMBER: 136B

LOCATION: TOWNSHIP 24 N RANGE 18 W SECTION 34 QUARTER SE
LATITUDE: N 35DEG 25MIN 15SEC LONGITUDE: W 114DEG 11MIN 08SEC
TOPO MAP NAME: CHLORIDE - 7.5 MIN

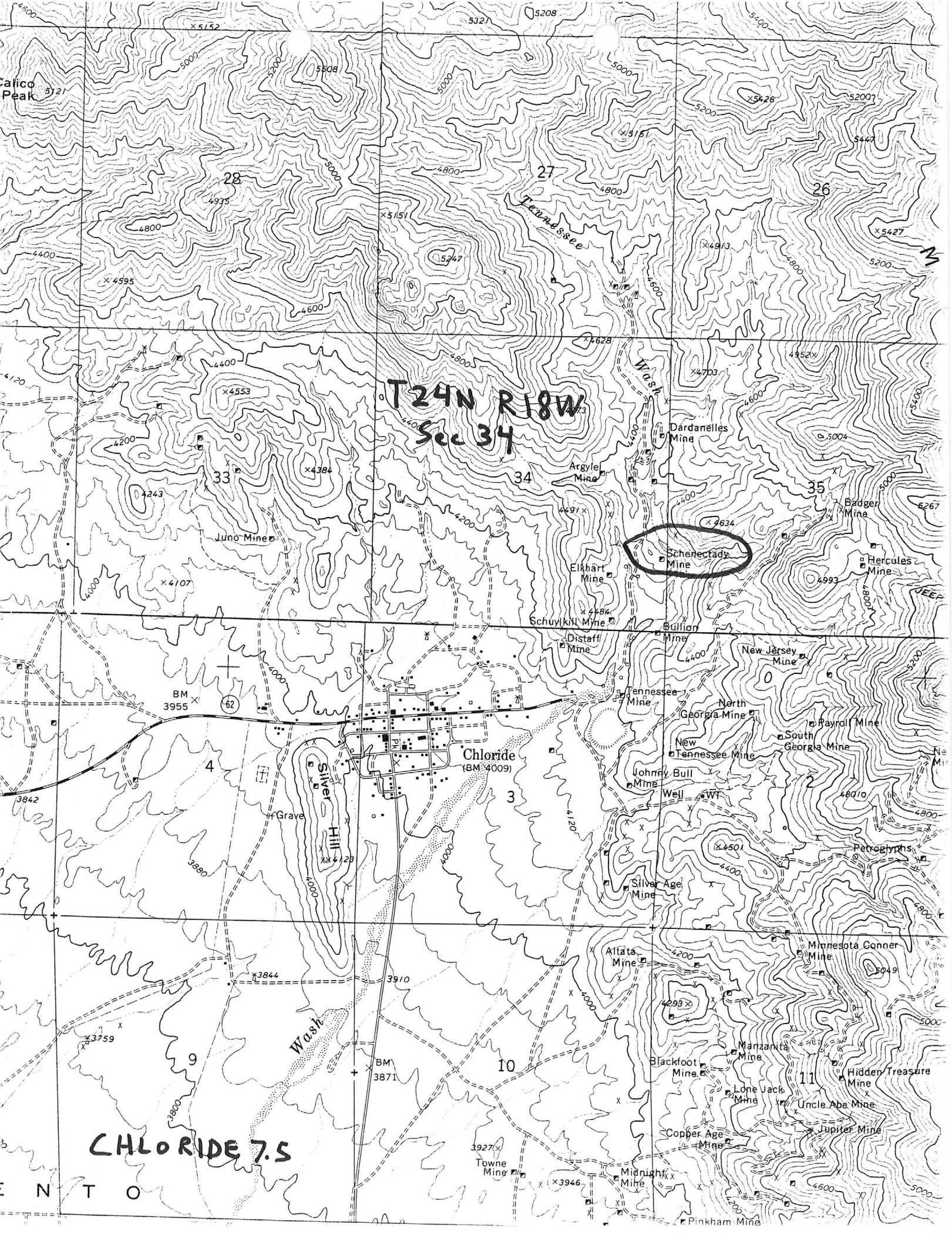
CURRENT STATUS: PAST PRODUCER

COMMODITY:

LEAD SULFIDE
SILVER
GOLD LODE
ZINC

BIBLIOGRAPHY:

USGS CHLORIDE QUAD
ADMMR SCHENECTADY FILE
WILLIS, C., AZ. MNG. JRNL., AUG. 1920, P. 13
HINTON, R.H., 1000 OLD AZ. MINES 1962, P. 100
EVAL. OF MIN. RES. OF THE HUALAPAI INDIANS,
VOL. I, P. 177 - ADMMR
ADMMR MOHAVE CARD FILE



ARIZONA DEPARTMENT OF MINES AND MINERAL RESOURCES

VERBAL INFORMATION SUMMARY (SHORT FORM)

May be Reproduced

May Be Inserted Into Mine File Or Added To "Rumor Page"

make card 1. Information from: Oroville Tabor

Address: Las Vegas, Nevada

2. Phone: (702) 733-9693

3. Mine: SCHENECTADY

4. ADMMR Mine file: Schenectady

5. County: Mohave

6. MILS Number: 136B

7. Operational Status:

8. Summary of information received, comments, etc.:

Mr. Tabor reported he owns (maybe part owner?) the Schenectady Mine near the community of Chloride. He is hoping to put it into production in the future and wanted to know what technical assistance we could provide.

I suggested he bring in the technical data on the ore deposit and metallurgy and we would start by helping him to determine its completeness and to look for any obvious problems.

Date: October 25, 1988


(Signature) AzDMMR

SCHENECTADY

MOHAVE COUNTY

NJN WR 5/6/88: Supplied information on custom mills to Charles Anderson of Trinity, California (?). Mr. Anderson and his partners are trying to get 30 tons of high grade material from the Schenectady, Mohave County. Once processed, Mr. Anderson plans to treat the concentrate at a smelter he and his partners have at Trinity, CA.
