



CONTACT INFORMATION

Mining Records Curator
Arizona Geological Survey
1520 West Adams St.
Phoenix, AZ 85007
602-771-1601
<http://www.azgs.az.gov>
inquiries@azgs.az.gov

The following file is part of the

Arizona Department of Mines and Mineral Resources Mining Collection

ACCESS STATEMENT

These digitized collections are accessible for purposes of education and research. We have indicated what we know about copyright and rights of privacy, publicity, or trademark. Due to the nature of archival collections, we are not always able to identify this information. We are eager to hear from any rights owners, so that we may obtain accurate information. Upon request, we will remove material from public view while we address a rights issue.

CONSTRAINTS STATEMENT

The Arizona Geological Survey does not claim to control all rights for all materials in its collection. These rights include, but are not limited to: copyright, privacy rights, and cultural protection rights. The User hereby assumes all responsibility for obtaining any rights to use the material in excess of "fair use."

The Survey makes no intellectual property claims to the products created by individual authors in the manuscript collections, except when the author deeded those rights to the Survey or when those authors were employed by the State of Arizona and created intellectual products as a function of their official duties. The Survey does maintain property rights to the physical and digital representations of the works.

QUALITY STATEMENT

The Arizona Geological Survey is not responsible for the accuracy of the records, information, or opinions that may be contained in the files. The Survey collects, catalogs, and archives data on mineral properties regardless of its views of the veracity or accuracy of those data.

09/25/85

ARIZONA DEPARTMENT OF MINES AND MINERAL RESOURCES FILE DATA

PRIMARY NAME: SANTA FE GROUP

ALTERNATE NAMES:

ALTA CLAIM

MOHAVE COUNTY MILS NUMBER: 39A

LOCATION: TOWNSHIP 19 N RANGE 20 W SECTION 28 QTR. W2
LATITUDE: N 35DEG 00MIN 16SEC LONGITUDE: W 108DEG 24MIN 44SEC
TOPO MAP NAME: OATMAN - 7.5 MIN

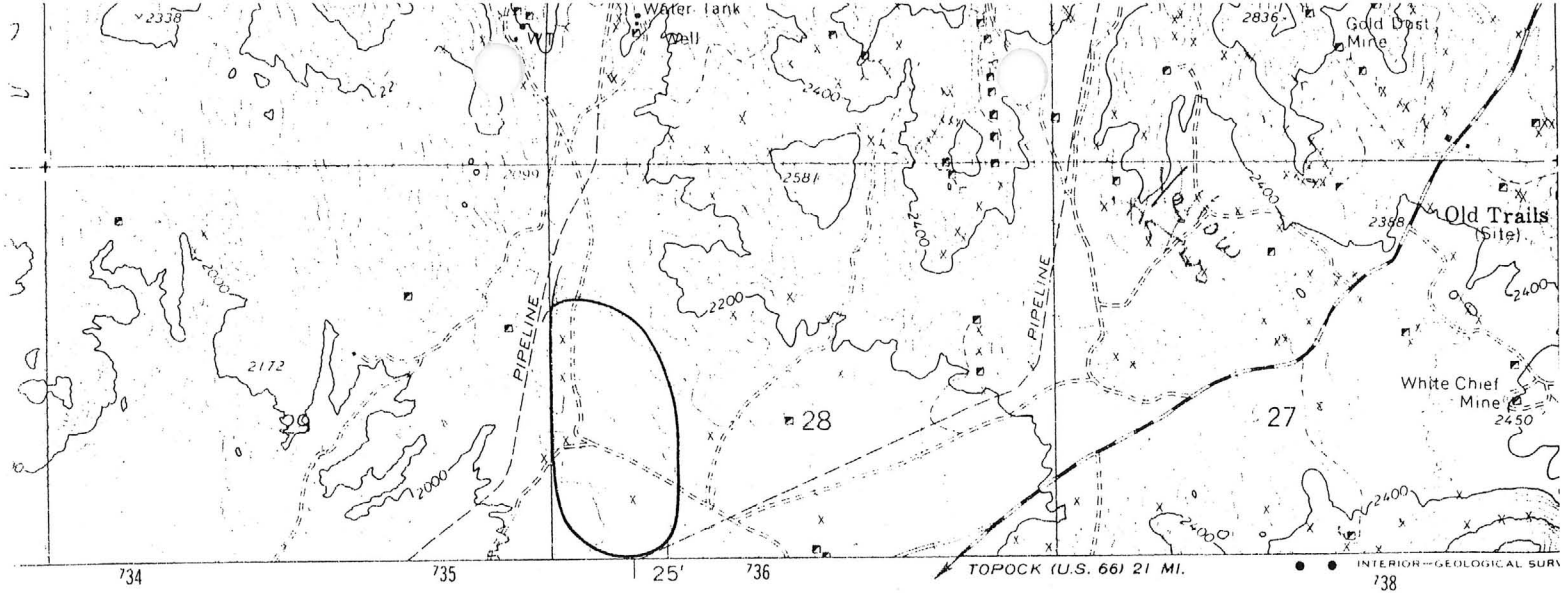
CURRENT STATUS: DEVEL DEPOSIT

COMMODITY:

GOLD-(M)LODE-PRIMARY

BIBLIOGRAPHY:

USGS OATMAN QUAD
ADMR HOUSEHOLDER MAP
ADMR SANTA FE GROUP MINE FILE
ADMR UNITED EASTERN MINE FILE, HAFF & COLWELL
MAP



SCALE 1:24000



INTERVAL 40 FEET
S MEAN SEA LEVEL

Santa Fe Group

T 19N R20W Sec. 28

W2



QUADRANGLE LOCATION

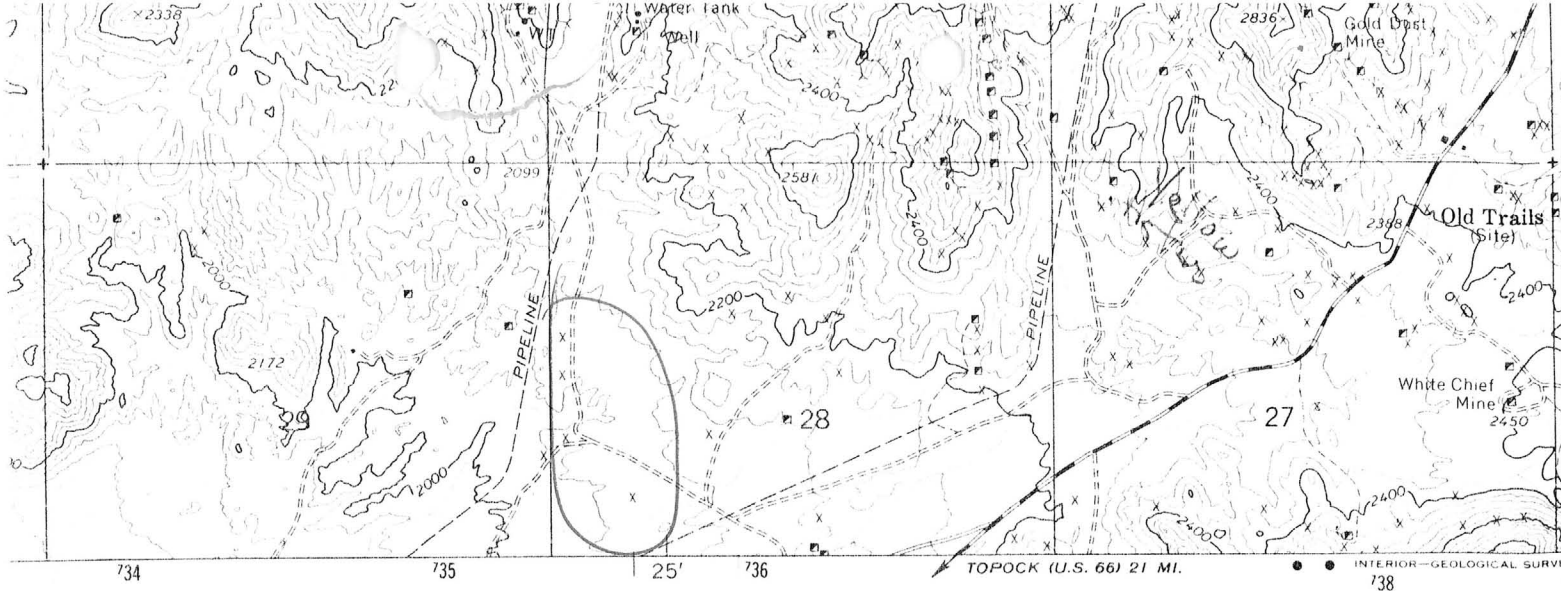
ROAD CLASSIFICATION

Medium-duty

Unimproved

NATIONAL MAP ACCURACY STANDARDS
DENVER, COLORADO 80225, OR WASHINGTON, D. C. 20242
MAPS AND SYMBOLS IS AVAILABLE ON REQUEST

Datman 7.5'



SCALE 1:24 000



INTERVAL 40 FEET
S MEAN SEA LEVEL

Santa Fe Group

T 19N R20W Sec. 28

W2



QUADRANGLE LOCATION

ROAD CLASS

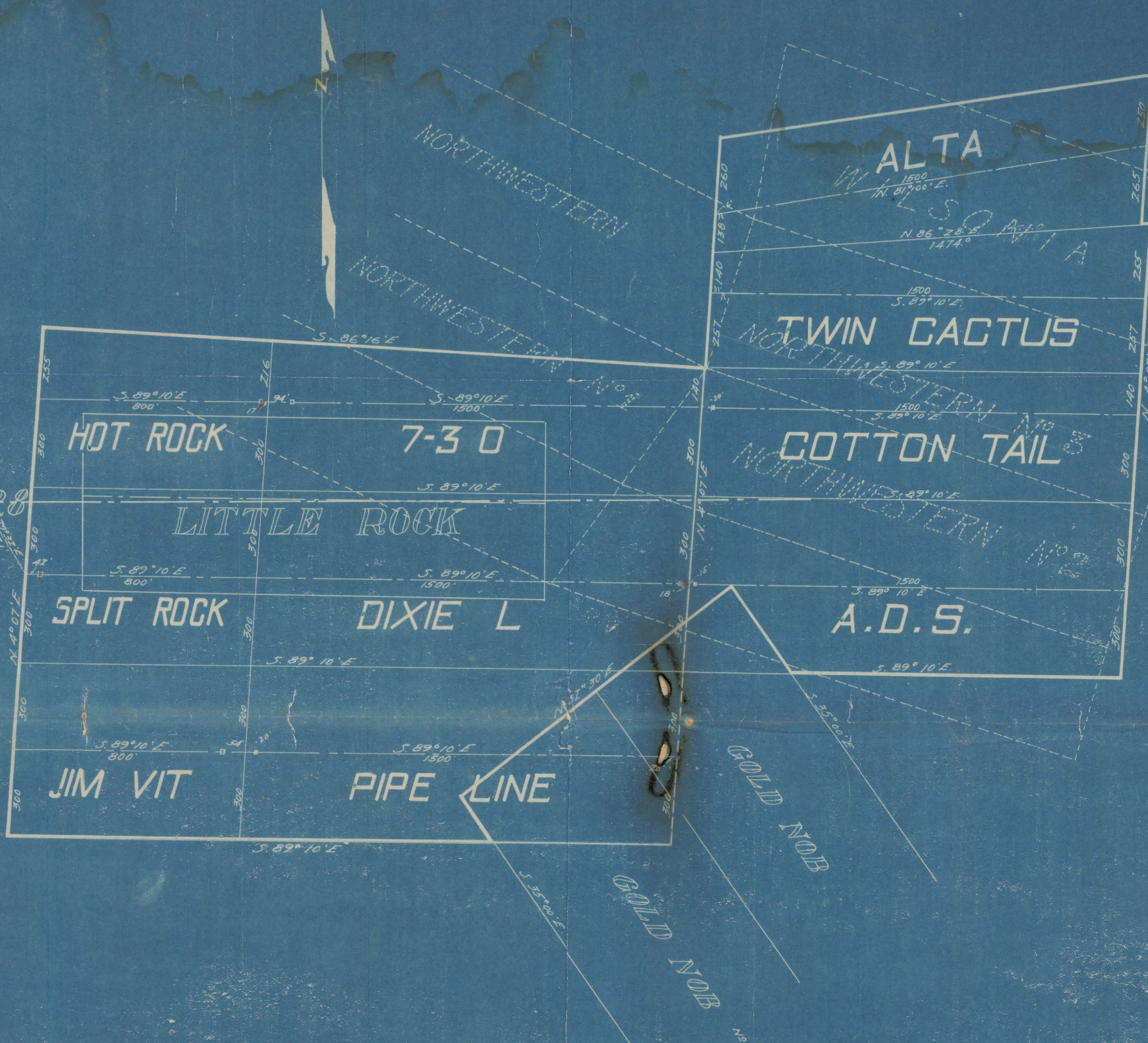
Medium-duty

Unimproved di

NATIONAL MAP ACCURACY STANDARDS
DENVER, COLORADO 80225, OR WASHINGTON, D. C. 20242
MAPS AND SYMBOLS IS AVAILABLE ON REQUEST

Oatman 7.5'

29 28



SANTA FE GROUP

LODE CLAIMS

SAN FRANCISCO MINING DIST
MOHAVE CO. ARIZ.

FOSTER & RICKETSON

SURVEYORS

OATMAN ARIZ.

Scale 1" = 300'