



CONTACT INFORMATION

Mining Records Curator
Arizona Geological Survey
1520 West Adams St.
Phoenix, AZ 85007
602-771-1601
<http://www.azgs.az.gov>
inquiries@azgs.az.gov

The following file is part of the

Arizona Department of Mines and Mineral Resources Mining Collection

ACCESS STATEMENT

These digitized collections are accessible for purposes of education and research. We have indicated what we know about copyright and rights of privacy, publicity, or trademark. Due to the nature of archival collections, we are not always able to identify this information. We are eager to hear from any rights owners, so that we may obtain accurate information. Upon request, we will remove material from public view while we address a rights issue.

CONSTRAINTS STATEMENT

The Arizona Geological Survey does not claim to control all rights for all materials in its collection. These rights include, but are not limited to: copyright, privacy rights, and cultural protection rights. The User hereby assumes all responsibility for obtaining any rights to use the material in excess of "fair use."

The Survey makes no intellectual property claims to the products created by individual authors in the manuscript collections, except when the author deeded those rights to the Survey or when those authors were employed by the State of Arizona and created intellectual products as a function of their official duties. The Survey does maintain property rights to the physical and digital representations of the works.

QUALITY STATEMENT

The Arizona Geological Survey is not responsible for the accuracy of the records, information, or opinions that may be contained in the files. The Survey collects, catalogs, and archives data on mineral properties regardless of its views of the veracity or accuracy of those data.

08/07/97

ARIZONA DEPARTMENT OF MINES AND MINERAL RESOURCES FILE DATA

PRIMARY NAME: SANTA TERESA

ALTERNATE NAMES:

FAIRVIEW PROSPECT
SANTA ANITA

GRAHAM COUNTY MILS NUMBER: 147A

LOCATION: TOWNSHIP 5 S RANGE 19 E SECTION 26 QUARTER SE
LATITUDE: N 32DEG 57MIN 59SEC LONGITUDE: W 110DEG 21MIN 46SEC
TOPO MAP NAME: COBRE GRANDE MTN - 7.5 MIN

CURRENT STATUS: PAST PRODUCER

COMMODITY:

LEAD SULFIDE
LEAD CARBONATE
LEAD OXIDE
COPPER OXIDE
ZINC

BIBLIOGRAPHY:

USGS PP. 461, GEOLOGY OF THE KLONDYKE QUAD,
1964, P. 133
ADMMR SANTA TERESA FILE

Inspected Property
~~DEPARTMENT OF MINERAL RESOURCES~~

News Items

Date

Aug. 17, 1951

Mine

Fairview Mine

Location

Near Aravaipa, Arizona.

Owner

Chas. Bush & Paul Merrill

Address

Klondyke, Ariz.

Operating Co.

Address

Pres.

Genl. Mgr.

Chas Bush & Paul Merrill

Mine Supt.

Mill Supt.

Principal Metals

Lead & Zinc

Men Employed

2 men on day shift

Production Rate

—

Mill, Type & Capacity

None

Present Operations

Sinking shaft and
Drifting. Shaft down to 165'
Drifting on the 125' Level.
Drift now in 40 Ft.

New Work Planned

Continued exploration work
until some ore is blocked
out.

Misc. Notes

Ore Fissure was 10" wide
at surface. Same fissure
is 3 to 4 Ft. wide at 100'
in depth.

1 Carload of ore was
shipped 3 months ago.

Information by superficial
information

SANTA TERESA

GRAHAM COUNTY

MG WR 2/1/85: While visiting the Brushy claim group, I stopped at the Santa Teresa mine (Graham County). The head frame and collar are in bad condition. The two-compartment shaft is in fair condition.,

25

33° 00'

559000m.E.

R. 19 E. R. 20 E.

54

3649

56

Figure 1

3648

5

12

3647

—

57'30"

019

3846

4

T.S.

22

50

T. 65.

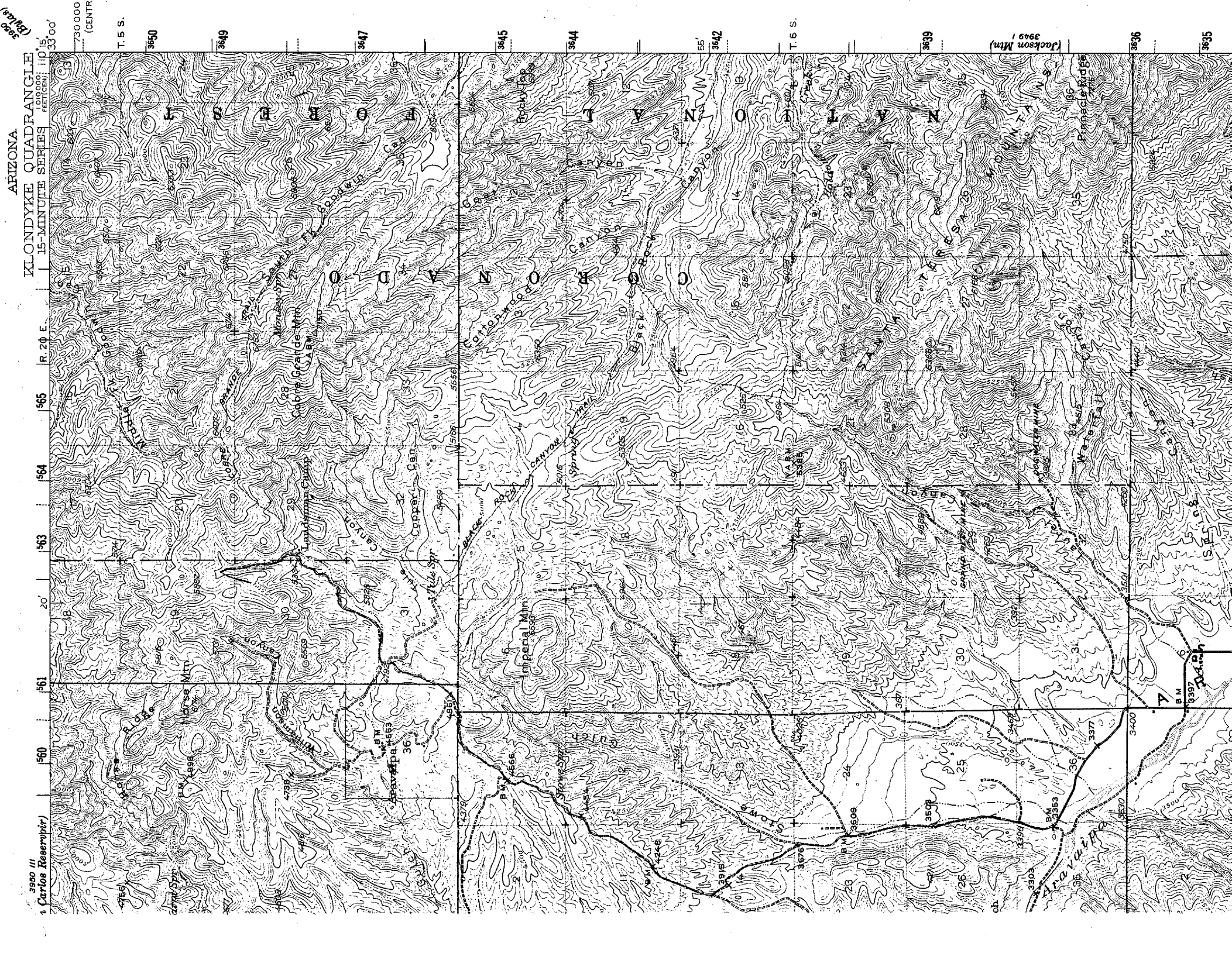
7

1

3845

40

1



C O P Y

Coolidge, Ariz.

Apr. 5, 1961

Arizona Dept. of Mineral Resources

Dear Sir:

In answer to your letter of Mar. 24th. The Ed Knothe Mines is not the same property as the "Santa Teresa". I do not know about the name "Santa Anita".

The Ed Knothe Mines are in the Galiuro District the "Santa Teresa" is in the Aravaipa District.

I sold my last mines which includes the "Santa Teresa" to Alf. B. Claridge and Dave Bryce of Safford.

To get the report on the Ed Knothe Mines write to C. C. Bush of Pima, Arizona.

We now live in Coolidge.

Truly

LON RUTLEDGE
P. O. Box 97
Coolidge, Ariz.

DEPARTMENT OF MINERAL RESOURCES
STATE OF ARIZONA
FIELD ENGINEERS REPORT

Mine Santa Teresa
(former name ---Santa Anita)
District Aravaipa District, Graham County.

Date Feb. 14, 1955.

Engineer Axel L. Johnson

Subject: Present Status.

Location Near Aravaipa, Ariz. ----- about 3 1/2 miles north of old Aravaipa P. O.

Number of Claims 7 unpatented claims.

Owner Lon Rutledge.

Lessee William H. Reed, Klondyke, Ariz. (Chas. Bush and Paul Merrill, formerly had a lease on this property)

Principal Minerals Lead and Zinc.

Number of Men Employed None at present.

Production Rate None at present.

Geology Mr. Reed, the lessee, reports 2 veins of lead and zinc ore in a country rock of limestone, with some tremolite, and the concentrations of good ore occurring near the tremolite and underneath same.

Ore Values Mr. Reed reports ore assays of the adjoining property as 22.5 % Lead, and 22.5 % Zinc. Ore is chiefly carbonates, with a small amount of sulphides.

Ore in Sight and Probable None.

Milling Facilities None. Ore would have to be shipped to Demin, N. Mex. for milling.

Present Mine Workings (1) 1 -- vertical shaft 100 ft. deep, with a 20 ft. drift on the 80 ft/ level, and (2) 1 -- adit about 100 ft. long.

Proposed Plans Mr. Reed plans to apply for a D. M. E. A. loan for installing a head frame and hoist at the shaft, sinking the shaft an additional 100 ft. to the 200 ft. level, and for a cross cut about 60 ft. in length. This work he estimates will cost about \$10,000, and he wishes to make application for the D. M. E. A. loan in approximately this amount. Mr. Reed intends to use his own mining machinery for this work, and supervise the job himself.

DEPARTMENT OF MINERAL RESOURCES

STATE OF ARIZONA

FIELD ENGINEERS REPORT

Mine Santa Teresa
(former name ---Santa Anita)
District Aravaipa District, Graham County.
Subject: Present Status.

Date Feb. 14, 1955.
Engineer Axel L. Johnson

Location Near Aravaipa, Ariz. ----- about 3 1/2 miles north of old Aravaipa P. O.

Number of Claims 7 unpatented claims.

Owner Lon Rutledge.

Lessee William H. Reed, Klondyke, Ariz. (Chas. Bush and Paul Merrill, formerly had a lease on this property)

Principal Minerals Lead and Zinc.

Number of Men Employed None at present.

Production Rate None at present.

Geology Mr. Reed, the lessee, reports 2 veins of lead and zinc ore in a country rock of limestone, with some tremolite, and the concentrations of good ore occurring near the tremolite and underneath same.

Ore Values Mr. Reed reports ore assays of the adjoining property as 22.5 % Lead, and 22.5 % Zinc. Ore is chiefly carbonates, with a small amount of sulphides.

Ore in Sight and Probable None.

Milling Facilities None. Ore would have to be shipped to Demin, N. Mex. for milling.

Present Mine Workings (1) 1 -- vertical shaft 100 ft. deep, with a 20 ft. drift on the 80 ft/ level, and (2) 1 -- adit about 100 ft. long.

Proposed Plans Mr. Reed plans to apply for a D. M. E. A. loan for installing a head frame and hoist at the shaft, sinking the shaft an additional 100 ft. to the 200 ft. level, and for a cross cut about 60 ft. in length. This work he estimates will cost about \$10,000, and he wishes to make application for the D. M. E. A. loan in approximately this amount. Mr. Reed intends to use his own mining machinery for this work, and supervise the job himself.

DEPARTMENT OF MINERAL RESOURCES
STATE OF ARIZONA
FIELD ENGINEERS REPORT

Mine Santa Anita

Date Feb. 10, 1955.

District Aravaipa Mining Dist., Graham Co.

Engineer Axel L. Johnson

Subject: Present Status.

This name not used now. File material under Santa Teresa.

DEPARTMENT OF MINERAL RESOURCES
STATE OF ARIZONA
FIELD ENGINEERS REPORT

Mine Santa Anita

Date Feb. 10, 1955.

District Aravaipa Mining Dist., Graham Co.

Engineer Axel L. Johnson

Subject: Present Status.

This name not used now. File material under Santa Teresa.