



CONTACT INFORMATION

Mining Records Curator
Arizona Geological Survey
1520 West Adams St.
Phoenix, AZ 85007
602-771-1601
<http://www.azgs.az.gov>
inquiries@azgs.az.gov

The following file is part of the

Arizona Department of Mines and Mineral Resources Mining Collection

ACCESS STATEMENT

These digitized collections are accessible for purposes of education and research. We have indicated what we know about copyright and rights of privacy, publicity, or trademark. Due to the nature of archival collections, we are not always able to identify this information. We are eager to hear from any rights owners, so that we may obtain accurate information. Upon request, we will remove material from public view while we address a rights issue.

CONSTRAINTS STATEMENT

The Arizona Geological Survey does not claim to control all rights for all materials in its collection. These rights include, but are not limited to: copyright, privacy rights, and cultural protection rights. The User hereby assumes all responsibility for obtaining any rights to use the material in excess of "fair use."

The Survey makes no intellectual property claims to the products created by individual authors in the manuscript collections, except when the author deeded those rights to the Survey or when those authors were employed by the State of Arizona and created intellectual products as a function of their official duties. The Survey does maintain property rights to the physical and digital representations of the works.

QUALITY STATEMENT

The Arizona Geological Survey is not responsible for the accuracy of the records, information, or opinions that may be contained in the files. The Survey collects, catalogs, and archives data on mineral properties regardless of its views of the veracity or accuracy of those data.

PRINTED: 07-25-2012

ARIZONA DEPARTMENT OF MINES AND MINERAL RESOURCES AZMILS DATA

PRIMARY NAME: SAN FRANCISCO

ALTERNATE NAMES:

EL PLUERTO
QUERTO
PA GROUP
SUMMIT MOTORWAY PROPERTY

SANTA CRUZ COUNTY MILS NUMBER: 202

LOCATION: TOWNSHIP 23 S RANGE 12 E SECTION 29 QUARTER SW
LATITUDE: N 31DEG 23MIN 32SEC LONGITUDE: W 111DEG 08MIN 34SEC
TOPO MAP NAME: RUBY - 15 MIN

CURRENT STATUS: PAST PRODUCER

COMMODITY:

LEAD
GOLD
SILVER

BIBLIOGRAPHY:

USGS RUBY QUAD
ADMMR TUCSON OFFICE
ADMMR SAN FRANCISCO FILE

SAN FRANCISCO

SANTA CRUZ COUNTY

MG WR 4/1/83: According to Mr. and Mrs. Jack Seitz, the un-named mine in teh SW $\frac{1}{4}$, Section 29, T23S R12E is the San Francisco Mine. In MILS it is #202, Summit Motorway Properties, other names Querto and El Puerto.

ARIZONA DEPARTMENT OF MINERAL RESOURCES
Mineral Building, Fairgrounds
Phoenix, Arizona

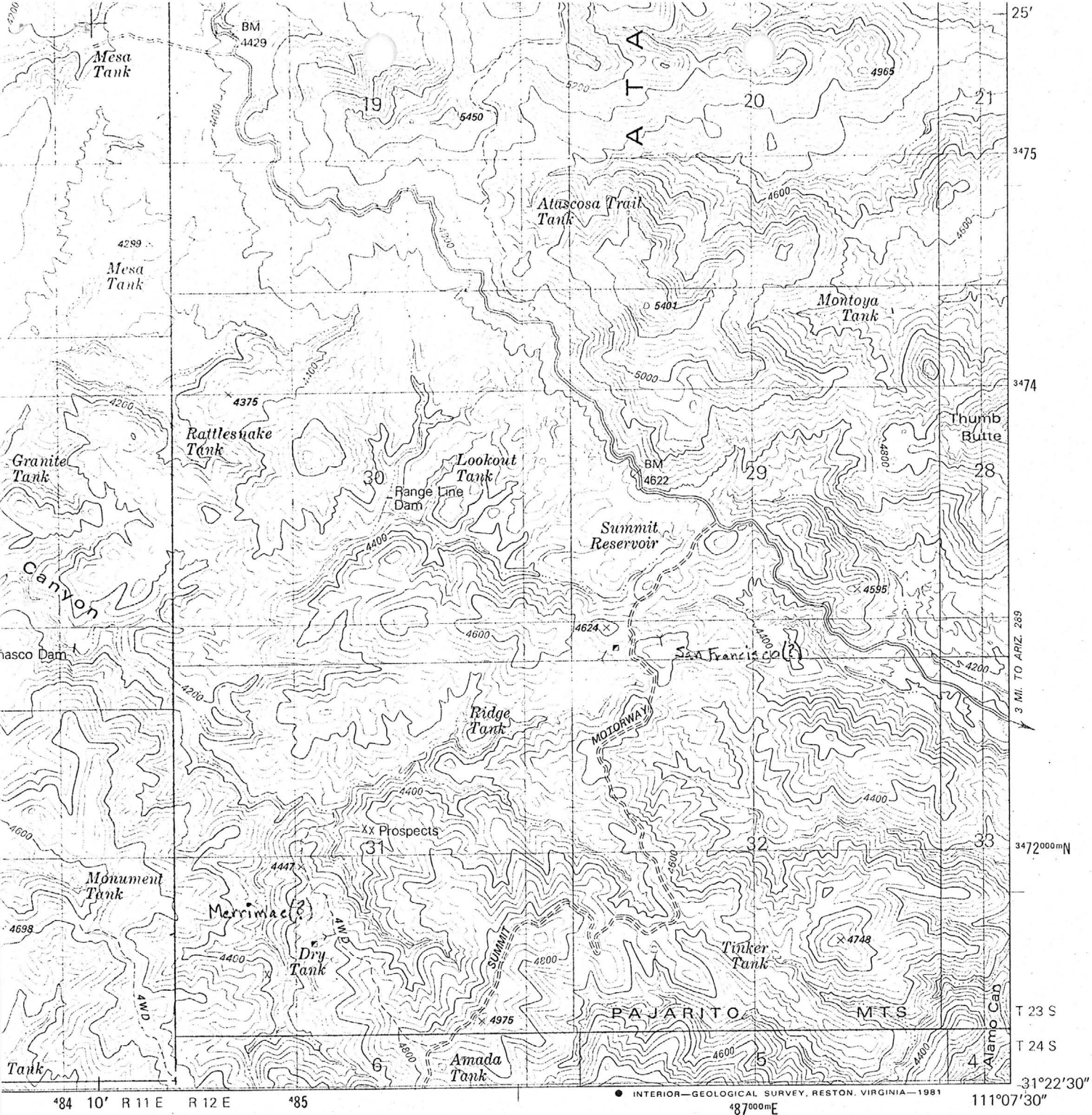
RECEIVED
JUN 29 1983
DEPT. MINERAL RESOURCES
PHOENIX, ARIZONA

1. Information from: Personal Visit
Address: _____
2. Mine: SAN FRANCISCO (?) 3. No. of Claims - Patented _____
(Santa Cruz Co.) Unpatented PA Group
4. Location: On Summit Motorway, Approx. 1/2 mile off main road between Pena Blanca and Ruby
5. SW 1/4, SW 1/4 Sec 29 Tp 23S Range 12E 6. Mining District Pajarito
7. Owner: American Copper
8. Address: 1726 Cole Blvd, #110, Golden, CO 80401
9. Operating Co.: _____
10. Address: _____
11. President: _____ 12. Gen. Mgr.: _____
13. Principal Metals: Pb & Ag (?) 14. No. Employed: _____
15. Mill, Type & Capacity: _____
16. Present Operations: (a) Down (b) Assessment work (c) Exploration
(d) Production (e) Rate _____ tpd.
17. New Work Planned: _____

18. Misc. Notes: No equipment and no recent activity.
Apparently ore occurs as silver-bearing galena with pyrite in thin fractures. Country rock appears to be andesite and latite(?) intruded by quartz monzonite of limited areal extent. Alternation is weak.

Date: June 16, 1983

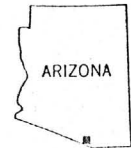
Michael W. Greeley
(Signature) (Field Engineer)



● INTERIOR—GEOLOGICAL SURVEY, RESTON, VIRGINIA—1981

ROAD CLASSIFICATION

- Primary highway, hard surface
- Secondary highway, hard surface
- Light-duty road, hard or improved surface
- Unimproved road
- Interstate Route
- U. S. Route
- State Route
- Mexico Routes



QUADRANGLE LOCATION

RUBY, ARIZ.—SONORA
 NW/4 RUBY 15' QUADRANGLE
 N3122.5-W11107.5/7.5

1981

DMA 3746 I NW—SERIES V898

(PAJARITO PEAK)
 3746 I SE