



CONTACT INFORMATION

Mining Records Curator
Arizona Geological Survey
1520 West Adams St.
Phoenix, AZ 85007
602-771-1601
<http://www.azgs.az.gov>
inquiries@azgs.az.gov

The following file is part of the

Arizona Department of Mines and Mineral Resources Mining Collection

ACCESS STATEMENT

These digitized collections are accessible for purposes of education and research. We have indicated what we know about copyright and rights of privacy, publicity, or trademark. Due to the nature of archival collections, we are not always able to identify this information. We are eager to hear from any rights owners, so that we may obtain accurate information. Upon request, we will remove material from public view while we address a rights issue.

CONSTRAINTS STATEMENT

The Arizona Geological Survey does not claim to control all rights for all materials in its collection. These rights include, but are not limited to: copyright, privacy rights, and cultural protection rights. The User hereby assumes all responsibility for obtaining any rights to use the material in excess of "fair use."

The Survey makes no intellectual property claims to the products created by individual authors in the manuscript collections, except when the author deeded those rights to the Survey or when those authors were employed by the State of Arizona and created intellectual products as a function of their official duties. The Survey does maintain property rights to the physical and digital representations of the works.

QUALITY STATEMENT

The Arizona Geological Survey is not responsible for the accuracy of the records, information, or opinions that may be contained in the files. The Survey collects, catalogs, and archives data on mineral properties regardless of its views of the veracity or accuracy of those data.

PRINTED: 03/14/2003

ARIZONA DEPARTMENT OF MINES AND MINERAL RESOURCES AZMILS DATA

PRIMARY NAME: SANDO

ALTERNATE NAMES:

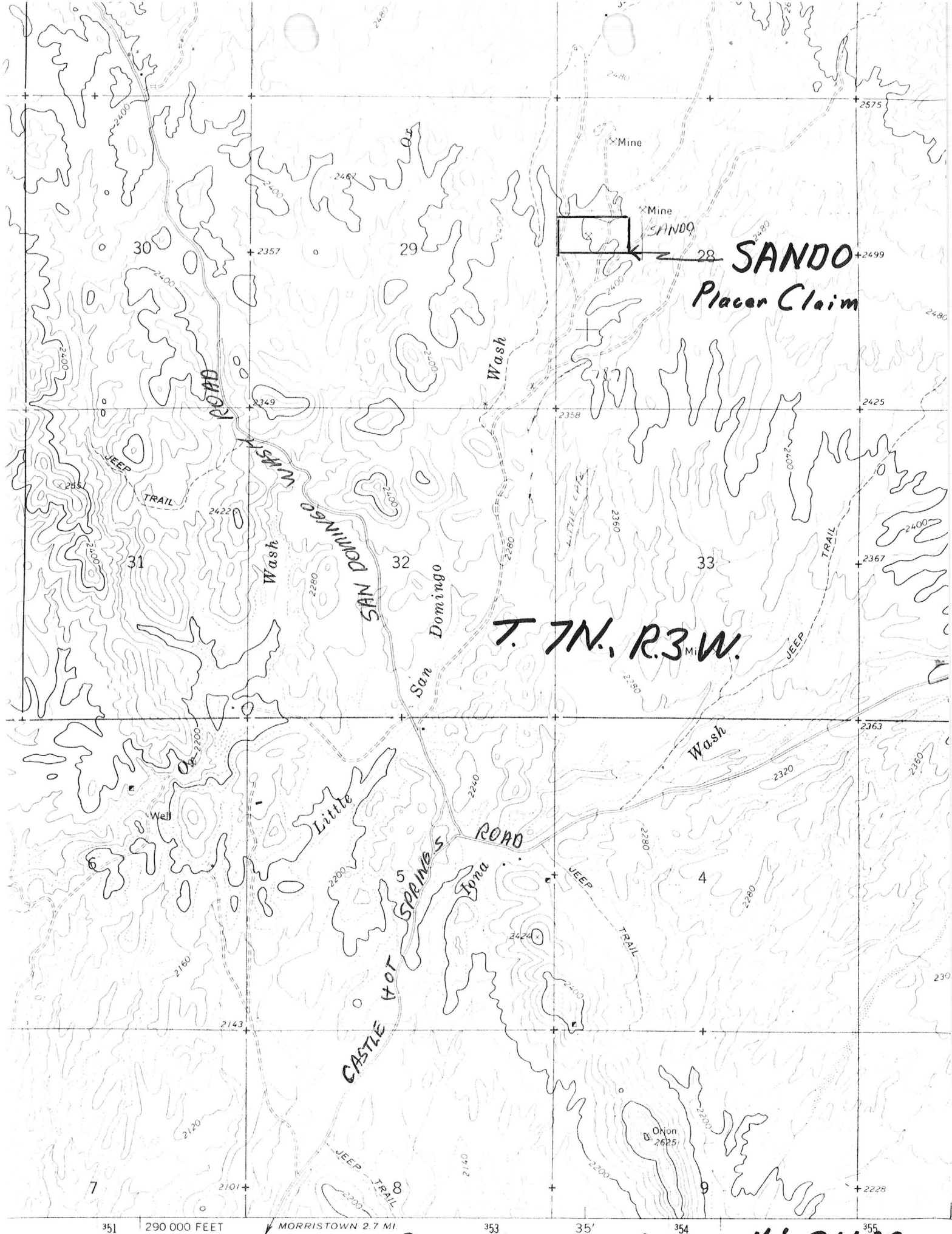
MARICOPA COUNTY MILS NUMBER: 319C

LOCATION: TOWNSHIP 7 N RANGE 3 W SECTION 28 QUARTER NW
LATITUDE: N 33DEG 55MIN 21SEC LONGITUDE: W 112DEG 34MIN 48SEC
TOPO MAP NAME: RED PICACHO - 7.5 MIN

CURRENT STATUS: PAST PRODUCER

COMMODITY:
GOLD PLACER

BIBLIOGRAPHY:
ADMMR SANDO FILE



SANDO

MARICOPA COUNTY

KAP WR 6/29/86: In the company of David Ten Bruin and Vince Kracum a visit was made to the Sando Placer Claim in the White Picacho District, Maricopa County. This 20 acre placer claim was located by Messrs Ten Bruin and Kracum and then sold the the Roadrunners Prsopectors; Association. A separate report describes the property.

Sheet 1 of 2

COMMODITIES GoldMILS ID No. Maricopa 319C Date June 20, 1986ENGINEER Ken A. PhillipsINFORMATION FROM: Field visitPROPERTY SUMMARY

- I. MINE NAME Sando (AMC 247112) OTHER POSSIBLE NAMES
INCLUDING ANY CLAIM NAMES NOTED _____
- II. LOCATION: T 7N R 3W SEC(S) NW $\frac{1}{4}$, Sec 26 MINE DISTRICT White Picacho
ELEV. 2400 feet COUNTY Maricopa TOPO QUAD. Red Picacho, Az 7.5
DIRECTIONS From Morristown, take Castle Hot Springs Rd 4.5 miles to San Domingo
Wash Rd, .4 miles north to Little San Domingo Was Rd, 2 miles to claim. See
attached map. MAP ATTACHED yes
- III. OWNERSHIP: NAME Road Runners Prospectors Club PHONE _____
ADDRESS: 6244 N. 43rd Avenue, Glendale, arizona 85301
COMPANY NAME IF ANY: _____
PERTINENT PEOPLE Claim located Nov. 15, 1985 by Larry Stires and David Ten
Bruin and sold to Road Runners
- IV. PROPERTY AND HOLDINGS: 20 acre placer claim
- V. PAST PRODUCTION - NOTED, KNOWN, PROBABLE, UNKNOWN, NONE Very small, (a few ounces
maximum) production of placer gold by hobbiests
- VI. CURRENT STATUS: Active on a casual basis
- VII. WORKINGS: Dozed piles of aluvial material from drainages. No evidence such
material had been previously worked.
- VIII. GEOLOGY AND MINERALOGY: DEPOSIT TYPE: Placer
LENGTH: _____ WIDTH: _____ VEIN STRIKE NA DIP NA
HOST ROCK: Decomposed granitic and volcanic rubble cut by shallow intermittant drainages
ECONOMIC MINERALS: Placer gold
- COMMENTS: Typical Arizona desert placer deposit on Little San Domingo Wash.
Although no evidence of workings to caliche or bedrock, similar deposits
have had best yield at caliche surfaces within drainages.
- IX. EQUIPMENT ON SIGHT: None

X. SAMPLING: NOTE TYPE IF ANY, DRILLING? Sampled using recreational placer
equipment. Results have been requested from Road Runners Prospector Club.

XI. REFERENCES AND REMARKS _____
