



## **CONTACT INFORMATION**

Mining Records Curator  
Arizona Geological Survey  
1520 West Adams St.  
Phoenix, AZ 85007  
602-771-1601  
<http://www.azgs.az.gov>  
[inquiries@azgs.az.gov](mailto:inquiries@azgs.az.gov)

The following file is part of the

Arizona Department of Mines and Mineral Resources Mining Collection

## **ACCESS STATEMENT**

These digitized collections are accessible for purposes of education and research. We have indicated what we know about copyright and rights of privacy, publicity, or trademark. Due to the nature of archival collections, we are not always able to identify this information. We are eager to hear from any rights owners, so that we may obtain accurate information. Upon request, we will remove material from public view while we address a rights issue.

## **CONSTRAINTS STATEMENT**

The Arizona Geological Survey does not claim to control all rights for all materials in its collection. These rights include, but are not limited to: copyright, privacy rights, and cultural protection rights. The User hereby assumes all responsibility for obtaining any rights to use the material in excess of "fair use."

The Survey makes no intellectual property claims to the products created by individual authors in the manuscript collections, except when the author deeded those rights to the Survey or when those authors were employed by the State of Arizona and created intellectual products as a function of their official duties. The Survey does maintain property rights to the physical and digital representations of the works.

## **QUALITY STATEMENT**

The Arizona Geological Survey is not responsible for the accuracy of the records, information, or opinions that may be contained in the files. The Survey collects, catalogs, and archives data on mineral properties regardless of its views of the veracity or accuracy of those data.

PRINTED: 06/24/2002

ARIZONA DEPARTMENT OF MINES AND MINERAL RESOURCES AZMILS DATA

PRIMARY NAME: SANCHEZ COPPER

ALTERNATE NAMES:

NANCY GROUP  
CARPENTER  
UNITED NUCLEAR  
BELLMON  
MCBRIDE  
ESPERANZA SANCHEZ  
BOB CARRESCO  
ARICHISE COPPER CO.

GRAHAM COUNTY MILS NUMBER: 108

LOCATION: TOWNSHIP 6 S RANGE 27 E SECTION 25 QUARTER ALL  
LATITUDE: N 32DEG 53MIN 00SEC LONGITUDE: W 109DEG 32MIN 40SEC  
TOPO MAP NAME: SAFFORD - 15 MIN

CURRENT STATUS: PAST PRODUCER

COMMODITY:

COPPER SULFIDE  
COPPER OXIDE  
GOLD  
SILVER

BIBLIOGRAPHY:

ADMMR SANCHEZ COPPER PROPERTY FILE  
ADMMR FILE  
ADMMR NANCY GROUP OF CLAIMS FILE  
ECONOMIC GEOL. VOL. 78, 1983, #4, P. 591  
ADMMR U FILE  
WEED, WALTER H, THE COPPER HANDBOOK, VOL. XI,  
1912-1913, P. 67  
E/MJ APR. 1974, P. 26, AUG, 1974 P. 63  
SKILLING MINING REV. 7-2-66, P. 17  
BLM AMC FILE 46578  
UNPAT. CLAIMS EXTEND INTO SEC. 13, 14, 15, 16  
19, 20, 21, 22, 23, 24, 26, 27, 28, 34, 35 &  
36 AND ALSO IN SEC. 23, 24, 25, 26 T7S-R27E  
MINING ENG. 4/73, P. 44

06/13/86

ARIZONA DEPARTMENT OF MINES AND MINERAL RESOURCES FILE DATA

PRIMARY NAME: SANCHEZ COPPER

ALTERNATE NAMES:

NANCY GROUP  
CARPENTER  
UNITED NUCLEAR  
BELLMON  
MCBRIDE  
ESPERANZA SANCHEZ  
BOB CARRESCO  
ARICHISE COPPER CO.

GRAHAM COUNTY MILS NUMBER: 108

LOCATION: TOWNSHIP 6 S RANGE 27 E SECTION 25 QUARTER ALL  
LATITUDE: N 32DEG 53MIN 00SEC LONGITUDE: W 109DEG 32MIN 40SEC  
TOPO MAP NAME: SAFFORD - 15 MIN

CURRENT STATUS: PRODUCER

COMMODITY:

COPPER  
COPPER SULFIDE  
COPPER OXIDE  
GOLD

BIBLIOGRAPHY:

ADMMR SANCHEZ COPPER PROPERTY FILE  
ADMMR FILE  
ADMMR NANCY GROUP OF CLAIMS FILE  
COE AND VAN LOO CONSULTING ENGRS INFO  
ADMMR U FILE  
WEED, WALTER H, THE COPPER HANDBOOK, VOL. XI,  
1912-1913, P. 67  
ECONOMIC GEOL. VOL. 78, 1983, #4, P. 591  
SKILLING MINING REV. 7-2-66, P. 17  
BLM MINING CLAIMS LEAD FILE 46578  
UNPAT. CLAIMS EXTEND INTO SEC. 13, 14, 15, 16  
19, 20, 21, 22, 23, 24, 26, 27, 28, 34, 35 &  
36 AND ALSO IN SEC. 23, 24, 25, 26 T7S-R27E  
MINING ENG. 4/73, P. 44  
E/MJ APR. 1974, P. 26, AUG, 9174, P. 63

SANCHEZ COPPER PROPERTY

GRAHAM COUNTY  
LONE STAR DISTRICT  
T6S R27E Secs 25, 26, 35, 36

REFERENCES:-

Skillings Mining Review 7-2-66 p 17

Mining Engineering 4/73, p. 44

E/MJ, April, 1974, p. 26

" Aug., 1974, p. 63 (dvlp. info.)

Economic Geology, Volume 78, June-July 1983, Number 4, "Remote Sensing for Porphyry Copper Deposits in Southern Arizona, by Michael J. Abrams, David Brown, Larry Lepley, and Ray Sadowski, Page 591

MILS Graham Index # 108

See also: Nancy Group of Claims (file) Graham Co

Copper Handbook, Walter Weed, Vol XI 1912-1913, p.67

BLM Mining Claims Lead File 46578, July 1980

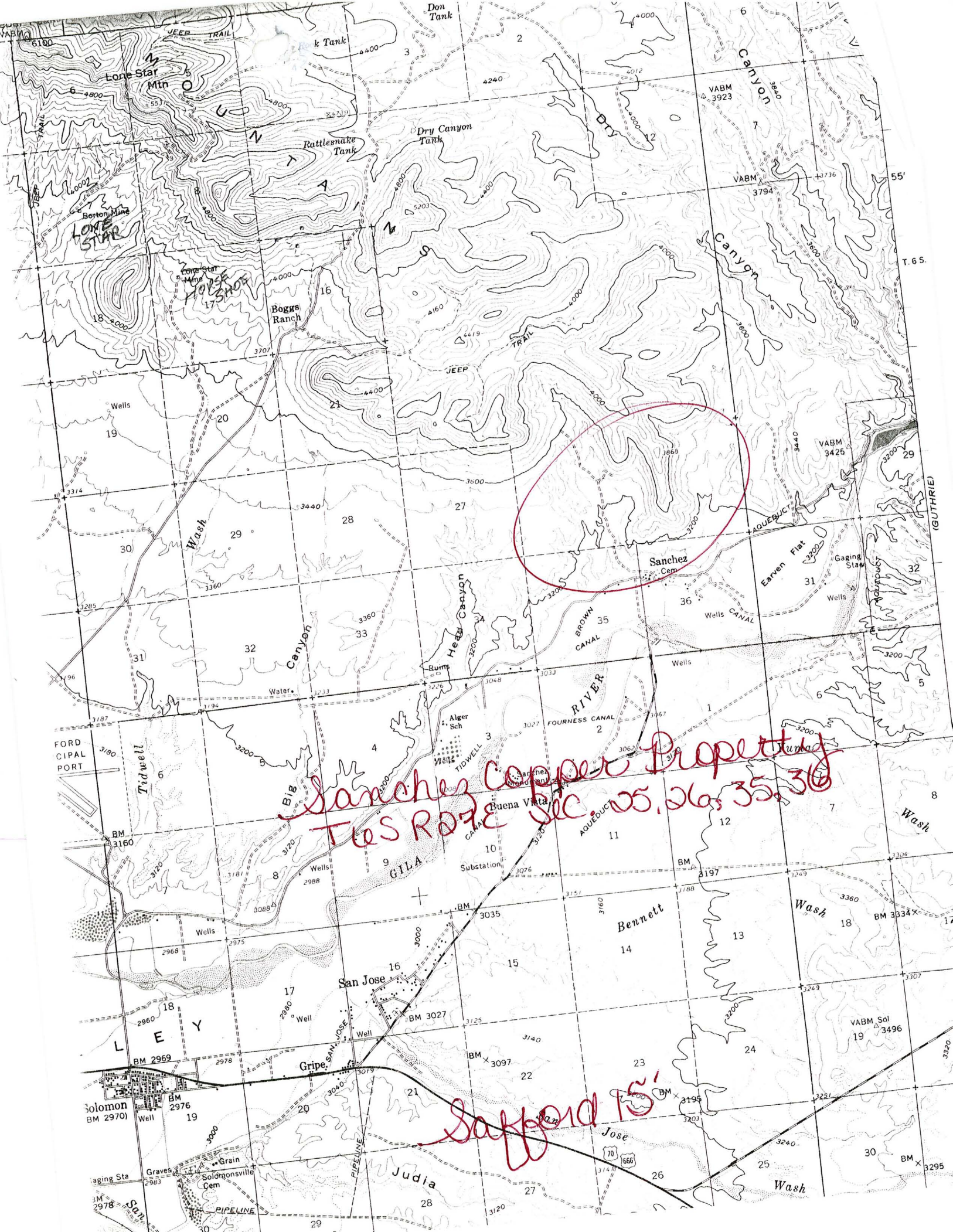
Aka: Nancy Group, Carpenter, United Nuclear, Bellmon, McBride, Bob Carresco, Arichise Copper Co., Esperanza Sanchez

See: Map I-1310-B p. 3; Mineral Deposit Map of the Silver City 1<sup>0</sup> x 2<sup>0</sup> Quad., NM & AZ

See: Paydirt article for 1/27/75 in Marconaflo (file)

Safford 15' Map (included in file)





Sanchez Copper Property  
T6S R07E Sec. 25, 26, 35, 36

Safford 15'



R27E

32° 55'



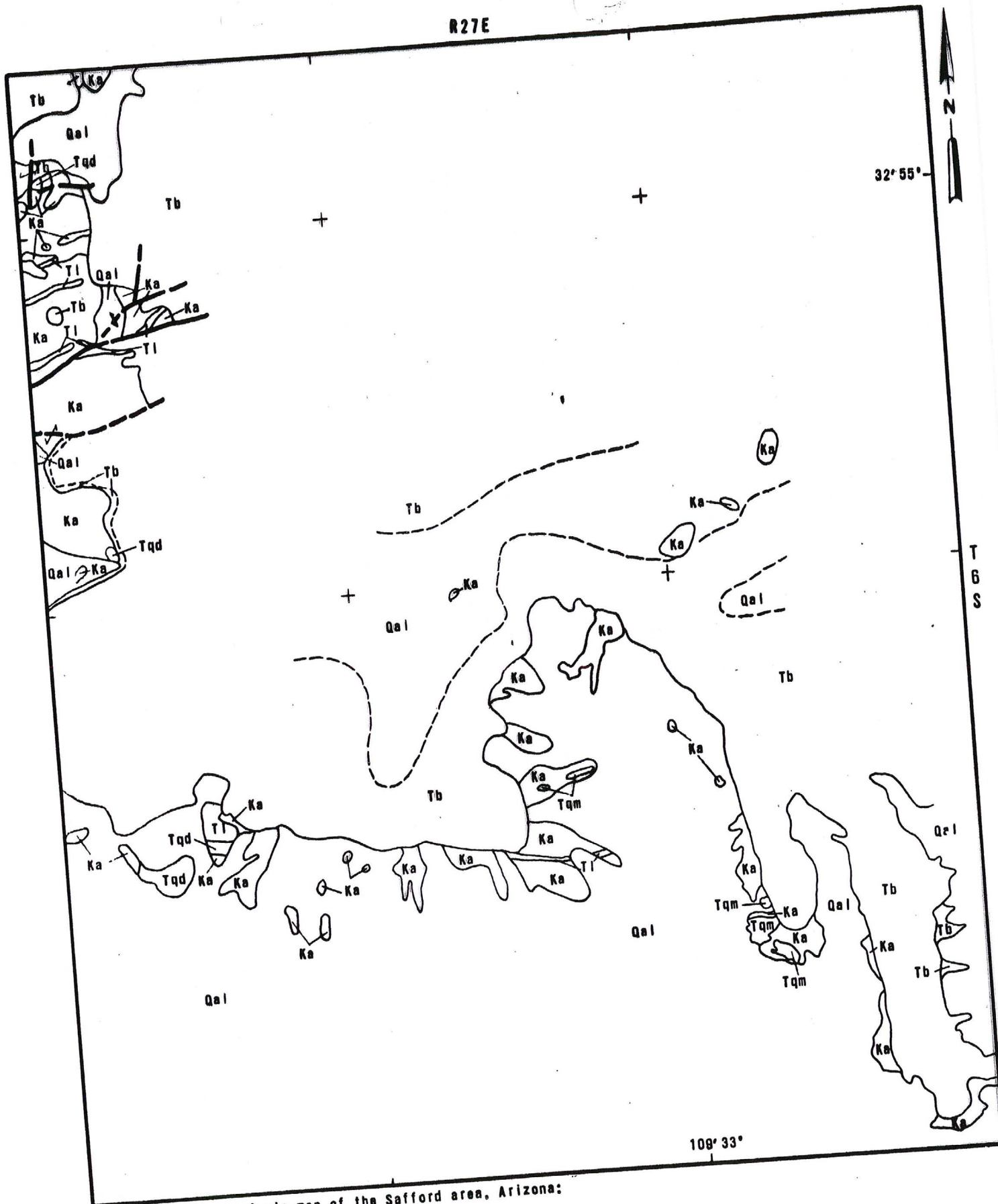
T 6 S

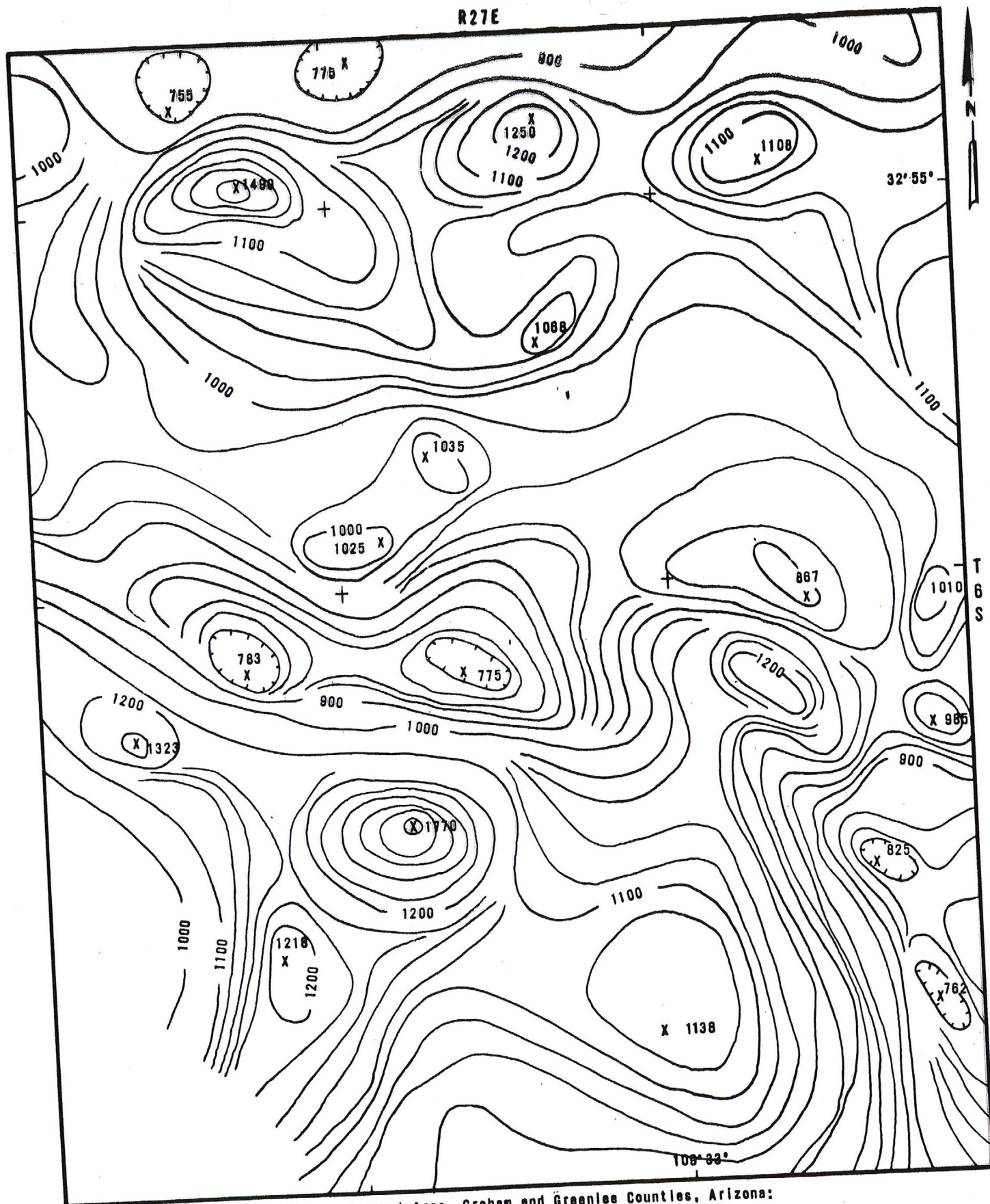
109° 33'

Cook, A., 1963, Geologic map of the Safford area, Arizona:  
 BCMC Porphyry Copper Blue Book

# GEOLOGIC MAP OF THE CARPENTER MINE AREA GRAHAM COUNTY, ARIZONA

Scale 1" = 2000'





Aeromagnetic map of the Safford - Morenci Area, Graham and Greenlee Counties, Arizona:  
BCNC Geophysics Div., sheet 2 of 2, no. A60-302, 1970.

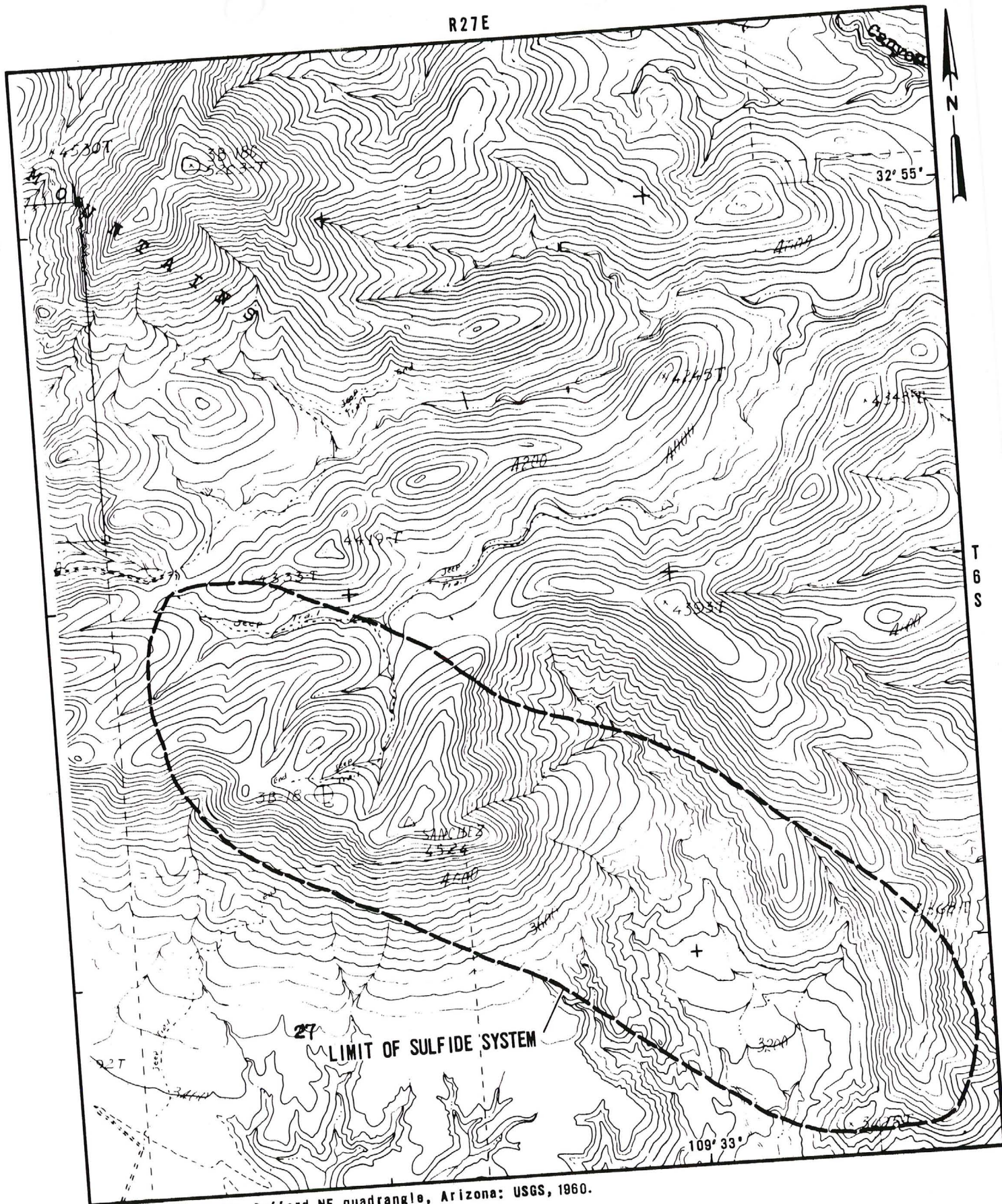
## AEROMAGNETIC MAP OF THE CARPENTER MINE AREA GRAHAM COUNTY, ARIZONA

Scale 1" = 2000'  
Contour interval 20 and 100 gammas

TC 1000°, FI 1/2 mile, NW-



R27E

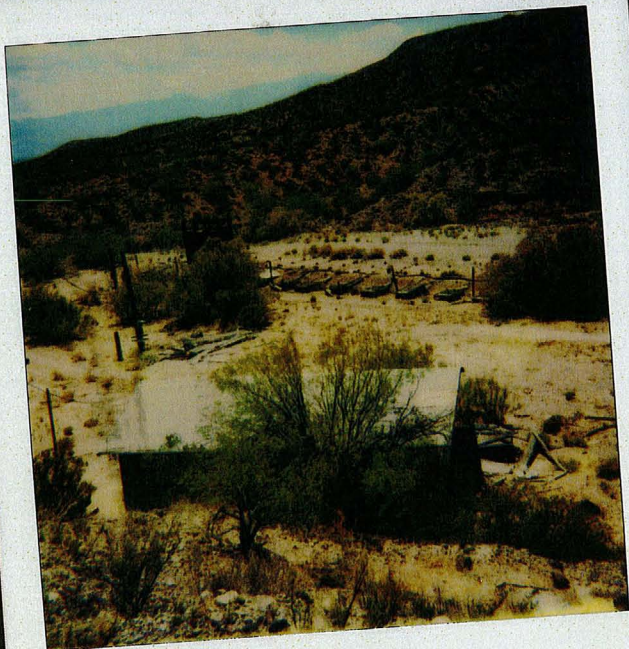


Topography from the Safford NE quadrangle, Arizona: USGS, 1960.

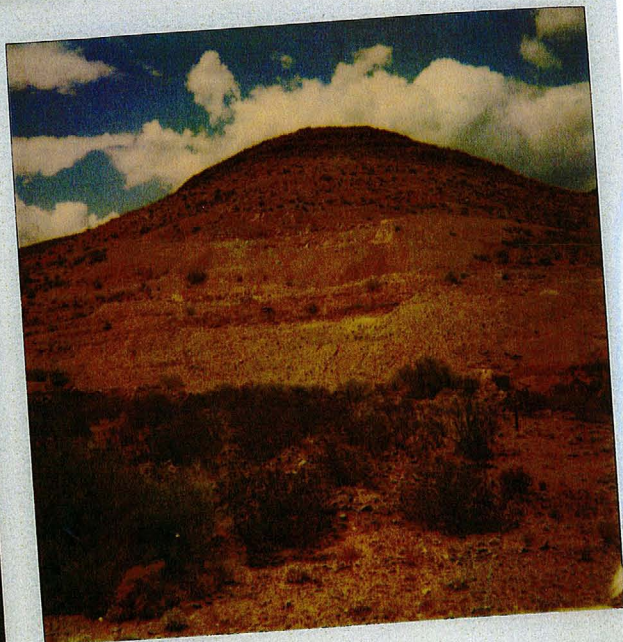
# TOPOGRAPHIC MAP OF THE CARPENTER MINE AREA GRAHAM COUNTY, ARIZONA

Scale 1" = 2000'





Sanchez 5/19/88  
Pilot Vat Leach - Core Shed



Sanchez 5/19/88  
Ore Benches



Sanchez 5/19/88  
Pilot Heap Leach



Sanchez 5/19/88  
Pilot Vat Leach





Sanchez 5/19/88  
Pilot Heap Leach



Sanchez 5/19/88  
Pilot Vat Leach



## ARIZONA COPPER RESERVES

COMPILED BY

ARIZONA DEPARTMENT OF MINES AND MINERAL RESOURCES

## PROPERTY:

SANCHEZ

## OPERATOR\OWNER:

AZCO - Arizona Copper Co.  
165 S. Union Blvd. #350  
Lakewood CO 80228  
303-969-0591

## LOCATION INFORMATION:

TOWNSHIP 6 S RANGE 27 E SECTION 25  
COUNTY - Graham AZMILS - 108  
DESCRIPTION - 10 miles NE of Safford

## ORE TYPE AND RESERVE INFORMATION:

Acid Soluble - 168 MILLION TONS AT 0.34% Cu (a)  
Sulfide - 120 MILLION TONS AT 0.4% Cu (b)  
Acid Soluble - 23 MILLION TONS AT 0.176% Cu (c)

RESERVE INFO. - (b) Sulfide contains 0.008 oz/ton Au, 0.1 oz/ton Ag.  
RESERVE INFO. - (c) Additional low grade material suitable for leaching.

## SOURCES:

(a) and (c) AZCO Report, 1992 (b) Report from William Sorsen, August 1988, ADMMR Sanchez file.

## COMMENTS:

Optioned by AZCO January 1989. Permitting and financing underway  
1993. 1.08:1 strip ratio.

01/09/96

ARIZONA COPPER RESERVES

COMPILED BY

ARIZONA DEPARTMENT OF MINES AND MINERAL RESOURCES

PROPERTY:

SANCHEZ

OPERATOR\OWNER:

Phelps Dodge  
2600 N. Central Avenue  
Phoenix, AZ 85004-3015  
602-234-8100

LOCATION INFORMATION:

TOWNSHIP 6 S RANGE 27 E SECTION 25  
COUNTY - Graham AZMILS - 108  
DESCRIPTION - 10 miles NE of Safford

ORE TYPE AND RESERVE INFORMATION:

Acid Soluble - 168 MILLION TONS AT 0.34% Cu (a)  
Sulfide - 120 MILLION TONS AT 0.4% Cu (b)  
Acid Soluble - 23 MILLION TONS AT 0.176% Cu (c)

RESERVE INFO. - (b) Sulfide contains 0.008 oz/ton Au, 0.1 oz/ton Ag.  
RESERVE INFO. - (c) Additional low grade material suitable for leaching.

SOURCES:

(a) and (c) AZCO Report, 1992 (b) Report from William Sorsen, August 1988, ADMMR Sanchez file.

COMMENTS:

AZCO reported 1.08:1 strip ratio. Sanchez and 70% of Piedras Verdes acquired by Phelps Dodge December 1995 for \$40MM.

ARIZONA DEPARTMENT OF MINES AND MINERAL RESOURCES

VERBAL INFORMATION SUMMARY

Information from: AZCO office in Solomon Arizona

Company: Azco Mining Inc.  
Address: P.O. Box 747  
City, State ZIP: Safford, Arizona 85548  
Phone: 602-428-6881

MINE: Sanchez

ADMMR Mine File: Sanchez  
County: Graham  
AzMILS Number: 108

SUMMARY

AZCO has rearranged their business offices and addresses. Their corporate office is now located in Solomon along with the their Sanchez Mine office:

AZCO Mining Inc.  
P.O. Box 747  
Safford, Arizona 85548  
Phone (602) 428-6881

They now call their Lakewood, Colorado office on South Union Blvd. their Executive Office.

Their Investor Relations Office is located in Vancouver, B.C. Canada. Its address is:

AZCO Mining Inc.  
Investor Relations  
580 Hornby Street, 5th Floor  
Vancouver, B.C., V6C 2E7  
Phone 604-682-7286  
1-800-563-SXEW (7939)

Ken A. Phillips, Chief Engineer      Date: May 6, 1994

Date Printed: 01/05/93

ARIZONA DEPARTMENT OF MINES AND MINERAL RESOURCES

VERBAL INFORMATION SUMMARY

Information from: David Beling, Project Manager

Company: AZCO - Sanchez Project

Address: P.O. Box 123  
City, State ZIP: Solomon, Arizona  
Phone: 602-428-6881

MINE: Sanchez Copper

ADMMR Mine File: Sanchez Copper Property  
County: Graham  
AzMILS Number: 108

SUMMARY

AZCO has set up a local office in Solomon to direct their project of developing the Sanchez Copper Mine.

Ken A. Phillips, Chief Engineer      Date: January 4, 1993



SANCHEZ COPPER

GRAHAM COUNTY

RRB WR 4/24/87: Mack Johnson reports that development will start at the Sanchez (file) property in Graham County after the Van Dyke project is in regular production. Probably some time in 1988.

-----

NJN WR 11/6/87: Rick Dutka visited and reported that a new company, Butte Resources, is active at the Sanchez Copper Property (file) Graham County. The company plans to leach the copper to produce copper sulfate crystals.

-----

NJN WR 11/27/87: Bob Zache (card) Kocide Chemicals (card) reported that they did not exercise their option at the Sanchez (file) Mohave County.

-----

HM WR 4/8/88: A 1972 report on the Carpenter Mine, aka Sanches Deposit, Graham County was added to the file. Several local geologists have visited the office recently to review data on this property.

-----

RRB WR 5/20/88: Visited the Sanchez (file) property in Sec 26, T6S R27E, Graham County. Found remains of heap and vat leach-cementation pilot tests and core shed full of core.

-----

ESPERANZA SANCHEZ

GRAHAM

I talked to Mr. Sonive at Inspiration's assay office in Safford and he said there was no activity at the Sanchez property. Apparently the contract with Kaiser Engineers to build a leaching plant was not signed. VBD WR 4/22/75

---

KAP WR 5/4/84: William "Bill" Sorsen (c) was in and reported he is one of the four owners of the Sanchez Copper Property which he has had leased to Inspiration Copper. He explained that Inspiration has recently released the property to the owners and he is trying to find a firm which might be interested in the property. The deal he had with Inspiration was a 3% net smelter royalty with a \$100,000 annual minimum royalty prior to production. The copper deposit has been drilled and mine-metallurgical design has been completed. The deposit is located in the Lone Star Mining District, Graham County. Mr. Sorsen provided a copy of the summary report prepared by Inspiration for inclusion in our files. A copy along with a letter of explanation has been sent to Ken Poulsen of Brush-Wellman. The four owners do business as Harpoon Incorporated.

---

MG WR 9/27/85: Have learned that Harpoon, Inc. is asking \$5,000,000 for the Sanchez mine (Graham County). Apparently there is a high grade core of leachable copper that could be mined, with no stripping of waste necessary, and sent directly to an SX-EW plant.

---

KAP WR 5/2/86: William W. Sorsen, 770 Sunset Drive, Globe, Arizona 85501 was in and reported that his Sanchez Copper (file), Graham County is available for exploration and/or development. He feels he has a marketable deposit as an oxide copper mine. He has calculated a +30,000,000 tons of +0.5% acid soluble copper with less than 150 feet of overburden. He provided some reserve data for the file. He also explained that he has sold over 300 tons of decorative stone to a Texas stone company. The stone chrysocolla with some chalcocite. More is available.

---

RRB WR 10/31/86: James "Mack" Johnson (c) of Kocide Chemical (c) reported that Kocide has acquired the Sanchez Copper Property (f) in Graham Co. They plan to start development of a heap leach-SX<sub>4</sub>-crystallizer process in 1987 to be in production in 1988.

C. S. 4

---

INSPIRATION - ESPERANZA SANCHEZ

\*

Mine visit - Esperanza Sanchez. GWI WR 4/19/71

---

Mine visit - Inspiration Consolidated Copper's Esperanza Sanchez property.  
GWI WR 6/14/71

---

The Esperanza Sanchez property of the Inspiration Consolidated Copper Co. expanded leaching experimental work is going on. A much larger pad with heavy concrete base and vertical sides has been constructed. GWI WR 6/30/71

---

Mine visit. Inspiration Safford project. GWI WR 10/19/71

---

Inspiration Consolidated Copper Co. is waiting the completion of a feasibility report before any decision is made on their Esperanza Sanchez property. GWI QR 9/71

---

Inspiration continues their experimental work and feasibility studies of the Esperanza Sanchez project. GWI QR Oct-Dec '71

---

Mine visit. Inspiration Esperanza Sanchez project. GWI WR 2/15/72

---

Inspiration continues planning on their Sanchez project. GWI QR Jan-March '72

---

Inspiration's Esperanza Sanchez project is being evaluated and studied. GWI 4 1/4 '72

---

Visit at Inspiration laboratory in Safford where we talked to the chemist and there's only 4 or 5 men working for Inspiration and they are all in the laboratory at the present time. The project seems to be in abeyance without a decision coming very soon. GWI WR 10/10/72

---

Active mine list - October 1972 - Under development (1971)

---

Mine visit. Inspiration's Esperanza Sanchez property. GWI WR 2/20/73

---

\* Mr. G.A. Barber reported that Inspiration has taken over United Nuclear holdings at Sanchez on the Gila River in Graham County. GWI WR 9/27/69

---

Mine visit at Inspiration's Sanchez Mine. No one at the office. GWI WR 10/22/73

---



INSPIRATION SANCHEZ PROJECT

GRAHAM COUNTY

Work at the project continues with ore from the Carpenter Shaft and the open pit being put into pads of about 5000 tons for leaching experiments. Inspiration has staked out many claims to the southeast and west in addition to the one obtained from United Nuclear. The Nancy group of more than 100 claims to the north and west has been optioned also. The Nancy group has been drilled by Cerro Corp. and Superior Oil Co. GWI QR 4-1-70

---

Active Mine List May 1970 - 62 men - T. Dodge in charge

Work continues at the Esperanza Sanchez property of the Inspiration Consolidated Copper Co. An airfield has been built to accommodate the company plane. The problem facing the company is the extraction of copper from a low grade mixed oxide sulfide ore. GWI QR 6-30-70

---

Active Mine List Oct. 1970 - 30 men working - T. Dodge in charge

The Inspiration Esperanza Sanchez project continues with emphasis on the development of an economic method of copper recovery. GW QR 10-1-70

---

Near Safford, Arizona experimental leaching has yielded promising results at the Sanchez mine. Tentative mine layouts and plans for equipment are being formulated and analyzed for cost feasibility. Skillings Mining Review 12-12-70 p. 33

---

The Inspiration Esperanza Sanchez project continues with emphasis on the development of an economic method of copper recovery. GWI QR 10-1-70

---

The Inspiration Esperanza Sanchez project work is progressing but apparently the push for fast solution to problems has been relaxed. While the company is continuing the work the present copper market and added cost of the State pollution laws are having an effect. GWI QR 12-31-70

---

Mine visit - Inspiration's Esperanza Sanchez mine project. GWI WR 2-16-71

---

Esperanza Sanchez mine of The Inspiration Consolidated Copper Co. Experimental leaching pads are still being tested, however, the rush of a few months ago has been slowed by the lower price of copper. GWI QR 4-1-71

---

INSPIRATION SANCHEZ PROJECT

GRAHAM COUNTY

Inspiration has taken over the Sanchez property and now call it the Inspiration Sanchez project. At the Carpenter shaft a hoist has been installed, mining of a large bulk sample has commenced. Drilling of the ore zone continues. Pads for experimental leaching are being laid out. Portable crushing equipment being installed. Claims are being staked to increase the exploration area. Dr. Ted Dodge is in charge of the project and has an office on the site.

GWJ Quarterly Report 2/27/70

---



CARPENTER MINE

GRAHAM COUNTY

Ranchers Exploration and Development Corp have taken over the Carpenter Mine -  
this was a United Nuclear Project. GWI WR 6/11/66

Mr. G. A. Barber reported that Inspiration has taken over United Nuclear holdings  
at Sanchez on the Gila River in Graham County. GWI WR 7/27/69

United Nuclear's Esperanza Sanchez project has been taken over by Inspiration with  
Ted Dodge being the Geologist in charge. Two drills were observed drilling on the  
surface near the shaft. A new hoist was being installed and samples were being  
taken from the mine for evaluation. GWI Quarterly Report 9/1969