



CONTACT INFORMATION

Mining Records Curator
Arizona Geological Survey
1520 West Adams St.
Phoenix, AZ 85007
602-771-1601
<http://www.azgs.az.gov>
inquiries@azgs.az.gov

The following file is part of the

Arizona Department of Mines and Mineral Resources Mining Collection

ACCESS STATEMENT

These digitized collections are accessible for purposes of education and research. We have indicated what we know about copyright and rights of privacy, publicity, or trademark. Due to the nature of archival collections, we are not always able to identify this information. We are eager to hear from any rights owners, so that we may obtain accurate information. Upon request, we will remove material from public view while we address a rights issue.

CONSTRAINTS STATEMENT

The Arizona Geological Survey does not claim to control all rights for all materials in its collection. These rights include, but are not limited to: copyright, privacy rights, and cultural protection rights. The User hereby assumes all responsibility for obtaining any rights to use the material in excess of "fair use."

The Survey makes no intellectual property claims to the products created by individual authors in the manuscript collections, except when the author deeded those rights to the Survey or when those authors were employed by the State of Arizona and created intellectual products as a function of their official duties. The Survey does maintain property rights to the physical and digital representations of the works.

QUALITY STATEMENT

The Arizona Geological Survey is not responsible for the accuracy of the records, information, or opinions that may be contained in the files. The Survey collects, catalogs, and archives data on mineral properties regardless of its views of the veracity or accuracy of those data.

08/07/97

ARIZONA DEPARTMENT OF MINES AND MINERAL RESOURCES FILE DATA

PRIMARY NAME: SAM THORPE MINING GROUP

ALTERNATE NAMES:

NEW TELLURIDE
WEST HORN SILVER
PRINCE
BLACK PRINCE
RAINBOW

PINAL COUNTY MILS NUMBER: 96C

LOCATION: TOWNSHIP 1 S RANGE 12 E SECTION 26 QUARTER S2
LATITUDE: N 33DEG 18MIN 35SEC LONGITUDE: W 111DEG 06MIN 12SEC
TOPO MAP NAME: SUPERIOR - 7.5 MIN

CURRENT STATUS: PAST PRODUCER

COMMODITY:

GOLD
SILVER
LEAD
MANGANESE

BIBLIOGRAPHY:

ADMMR SAM THORPE MINING GROUP FILE

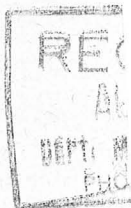


RETURNED
TO
WRITER

REASON
Unclaimed
Unknown
Insufficient address
Moved, Left no address
No such office in state
Do not remail in this envelope
POSTAGE DUE 2 CENTS

CHECKED
Refused

Mr. Sam Thorpe
Superior
Arizona



ARIZONA DEPARTMENT OF MINERAL RESOURCES
MINERAL BUILDING, FAIRGROUNDS
PHOENIX, ARIZONA

July 16, 1958

To the Owner or Operator of the Arizona Mining Property named below:

Sam Thorpe Mining Group (Pinal County)	^{le} lead and silver
(Property)	(ore)

We have an old listing of the above property which we would like to have brought up to date.

Please fill out the enclosed Mine Owner's Report form with as complete detail as possible and attach copies of reports, maps, assay returns, shipment returns or other data which you have not sent us before and which might interest a prospective buyer in looking at the property.

Frank P. Knight

FRANK P. KNIGHT,
Director.

Enc: Mine Owner's Report

SHORT DESCRIPTION OF GROUND OWNED BY
Sam Thorpe Mining Company
Offices 414-415-416 Fleming Bldg., Phoenix, Arizona

The Sam Thorpe Mining Company's Ground of seventeen (17) claims, containing about 225 acres of mineral ground, lies North and West of, and adjoins the Magma Copper Company's Mine, situated at Superior, in Pioneer Mining District, Pinal County, Arizona. The seventeen claims above mentioned are as follows:

Superior King,	New Telluride,	Black Prince,
Dixie King,	Horn Silver,	Dapple Copper,
New Bellue,	South Cross, Horn Silver,	West Oakland,
Gold Copper,	West Horn Silver,	Gold Bank,
Lime Mountain,	Cross Horn Silver No. 3,	Cross Horn Silver,
Magnet,	New East Horn Silver,	

The above claims lie about as the map plat shows.

The Sam Thorpe Mining Company owns one-half interest in the Superior King, Dixie King, New Telluride, West Oakland and Gold Bank claims, but owns the whole of the others. All have more or less work done on them amounting to several thousands of dollars, consisting of open cuts, short shafts and tunnelling done as annual assessment work on veins, lodes and porphyry dikes from a few inches in size up to 200 feet in width, showing more or less Copper, Gold, Silver, Lead and Manganese ores. On the Horn Silver more work was done than on any other claim, which developed copper, gold, silver and lead ores. Several lots were shipped from different places of this work. One lot of 295 pounds which, when treated at an El Paso, Texas, smelter, gave a return in lead and silver of \$62.50. Another of 500 pounds gave a return of \$150. Another of 1110 pounds gave a return of \$129. Several other shipments were made giving good returns. The workings from where these shipments were made has caved in, making it necessary to open a new entrance to get at the ore again. A tunnel was started which would cut the lode at a depth of about 170 or 175 feet from the surface, by driving the tunnel 300 feet into the mountain.

The tunnel was driven about 108 feet and it will take 160 odd feet further driving to cut the lode shipments were made from. The lode, by surface indications, is about 100 feet wide, and when tunnel enters it can drift easterly on the lode under the mountain from 600 or 700 feet above the tunnel which probably would enter a large body of black oxide copper ore running 40% to 60%, such as the Magma Mine produces. Tunnel is situated about 3,000 feet north of the Magma shaft on the north end of the mountain; the Magma is situated on the south end of the mountain. This mountain contains eight lodes lying parallel with the Magma lodes and each of them are larger at the surface than the Magma's. The Horn Silver lode contains lead, copper, horn silver, malleable silver, also native silver that would assay over 25,000 ounces per ton of 2000 pounds.

Most of the ground in the Sam Thorpe mining Company group lies between the Magma Mine and the famous old Silver King Mine, which has produced over \$16,000,000.00 silver, about two-fifths of which was in virgin metal as pure as ever entered a mint to be adulterated to the standard coin of clinking silver.

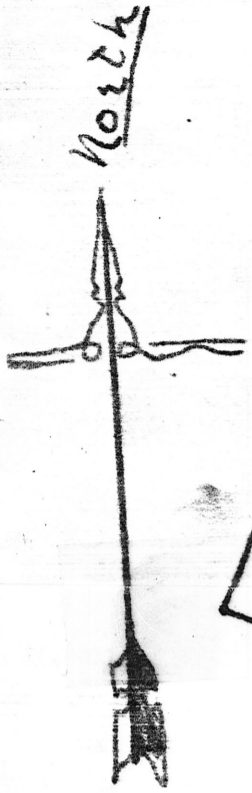
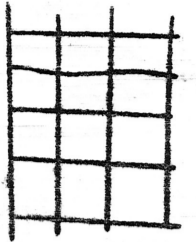
The Magma and Silver King Mines are only two and one-half miles apart, and as the south end line of the group adjoins the north line of the Magma leaves the Silver King about one and one-half miles north of the Sam Thorpe group of claims. The Magma is the richest mine now known in copper, gold and silver. The lode increases in size as depth is attained. At the 1500 foot level the lode is 37 feet wide and very rich. Am informed the 1800 foot level of Magma is about five times the size of the 1500 foot level, containing same rich ore. From this point they bored down with diamond drills to the depth of 3500 feet from the surface in ore, and the last 75 feet was in native silver. The Company is now sinking a three compartment shaft 3600 feet deep, 100 feet lower than the diamond drill hole, and this shaft has attained a depth of 1700 feet, evidently going for the native silver presumably to mine in on the declining price of copper.

This oblong mountain range rises about 800 feet above its base, to the top or apex, giving sites for tunnelling the lodes at several hundred feet in depth. The Magma Railroad is one mile south of the group of claims. A wagon road could be constructed to it at a nominal cost, also a railroad of easy grade could be constructed along the base of the mountain to the claims at a nominal cost, on which mining supplies could be shipped into the mines and ore shipped out. Water for mining purposes can be had on the ground by sinking near the base of the mountain.

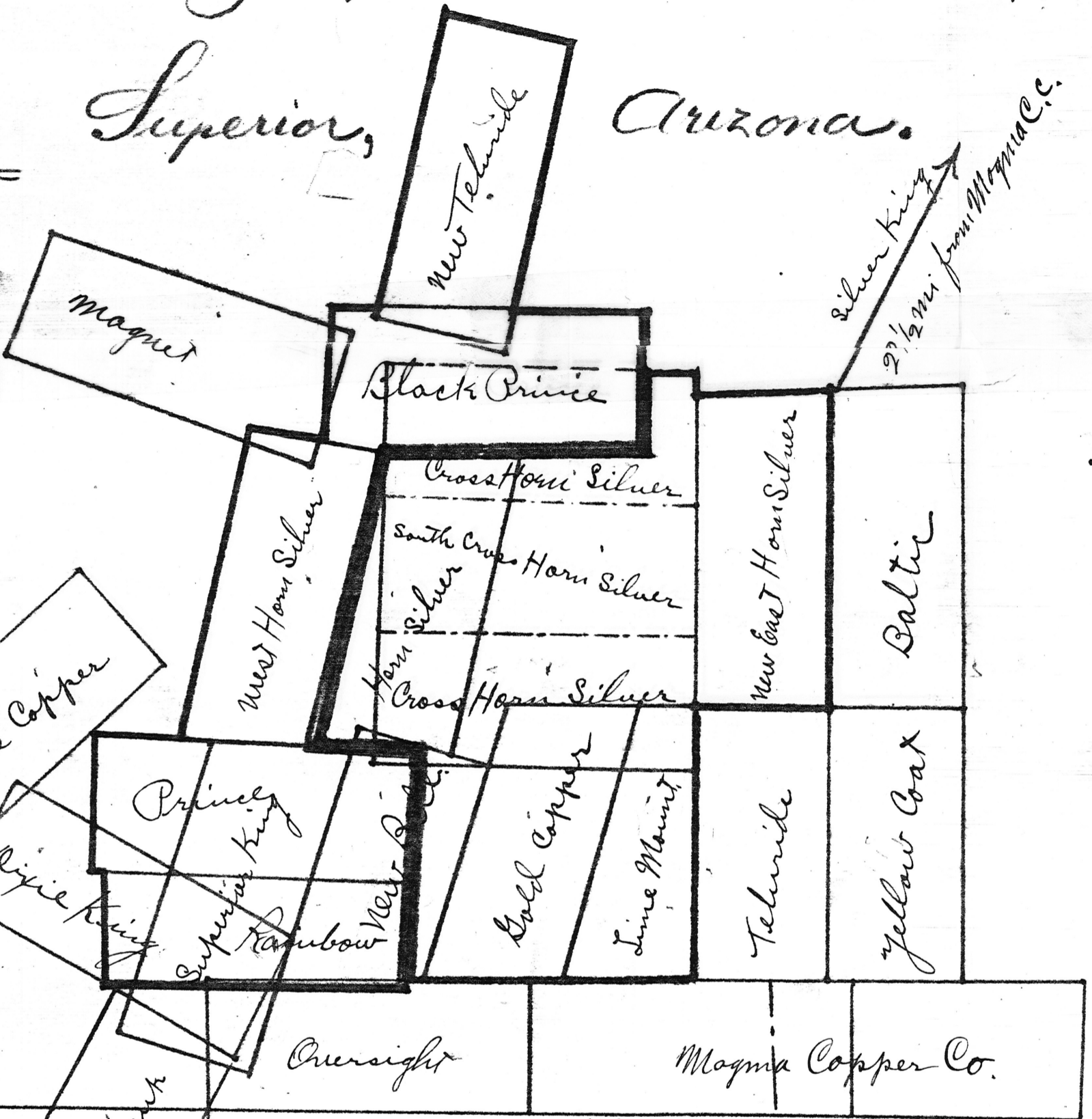
The geology of the mountain—the top formation is a lime strata, lying beneath it is quartzite strata, the lower strata is called a diabese rock which is an altered granite strata. In this is the ore. All around the base of this mountain is a soft quartzite granite porphyry rock, containing seams of talc, when dug into show copper stain, indicating that probably all of these veins, lodes and porphyry dikes and seams contain mineral are from one vast deposit of ore lying beneath the mountain, and if so its mineral wealth is incomparable, be it as it is, I consider it among one of the best mining propositions in the Southwest, and probably of the continent, for on development I look for Pioneer Mining District to become the mining camp of the continent. I have arrived at this opinion by prospecting, digging into and studying these mountains for 38 years. From one to one and one-half miles in width for the distance of 20 miles along the west side of the range of Pinal Mountains probably there is not another like area so treasured in mineral wealth on the Globe's mineralized domain.
January 9, 1919.

SAM THORPE,
Superior, Arizona.

Sam Thorpe Mining Co. Group of claims.

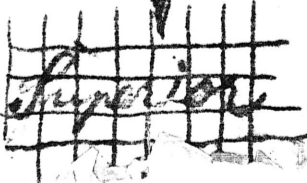


Superior, Arizona.



space inside heavy red line represents ground on which
the Sam Thorpe Mining Co. has undisputed title.

space inside heavy blue line represents ground which
the Co. claims, but to which title is in dispute.

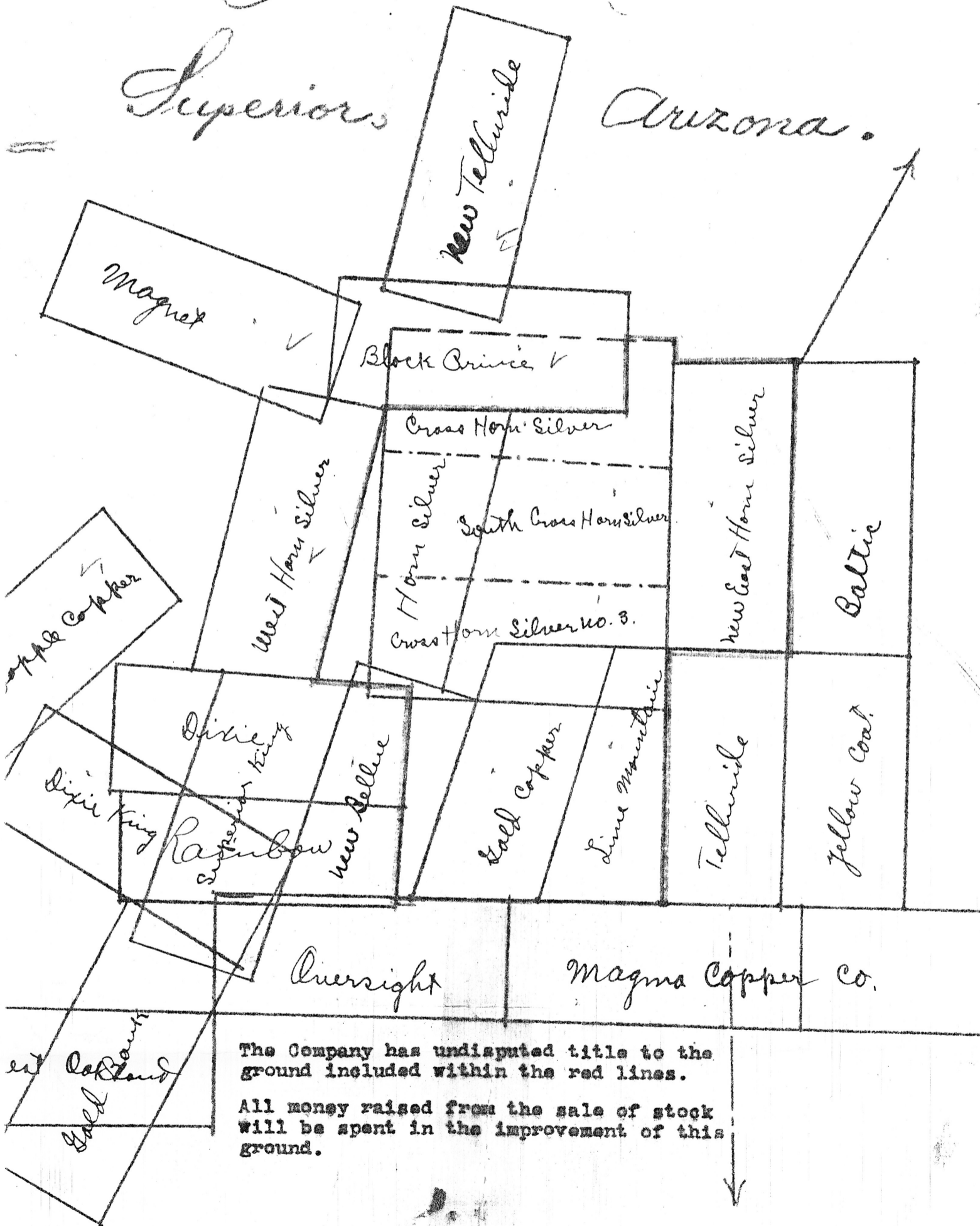


Sam Thorpe Mining Co.

Group of claims.

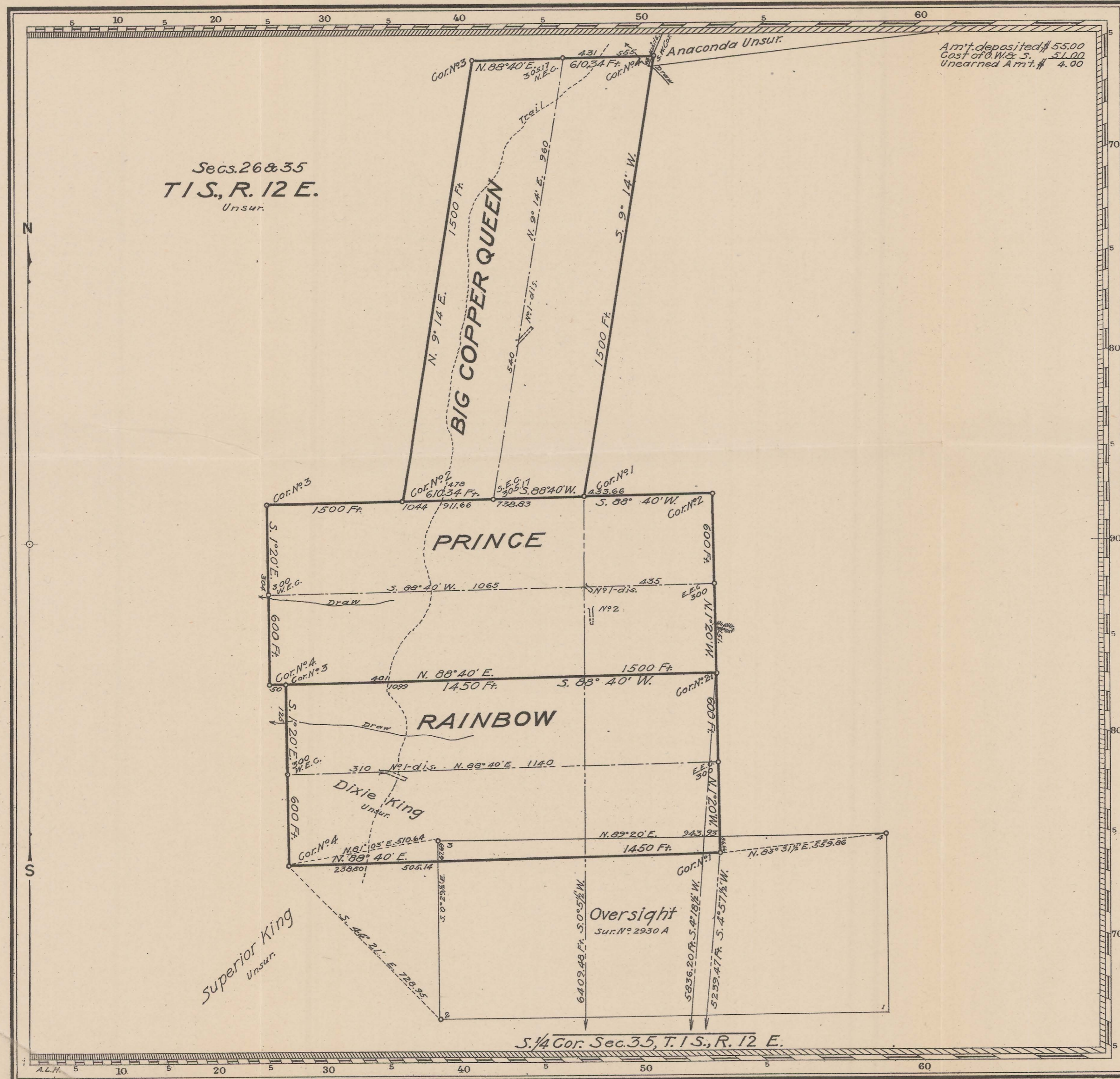
Superior

Arizona.



The Company has undisputed title to the ground included within the red lines.

All money raised from the sale of stock will be spent in the improvement of this ground.



Claims Located Rainbow Jan. 1, 1911.
Prince and Big Copper Queen, Am'd. Dec. 13, 1916.

Mineral Survey No. **3360**

Lot No. _____
Arizona Land District.

PLAT
OF THE CLAIM OF
Magma King Copper Company

KNOWN AS THE

**RAINBOW, PRINCE and
BIG COPPER QUEEN LODES.**

IN Pioneer MINING DISTRICT,
Pinal COUNTY, Arizona

Containing an Area of _____ Acres.

Scale of 300 Feet to the inch.

Variation 14° 30' E.

SURVEYED Dec. 22, 1916,

Jan. 15, 1917, by

Paul E. Fernald U.S. Deputy Mineral Surveyor.

The Original Field Notes of the Survey of the Mining Claims of
Magma King Copper Company
known as the

Rainbow, Prince and Big Copper
Queen Lodes

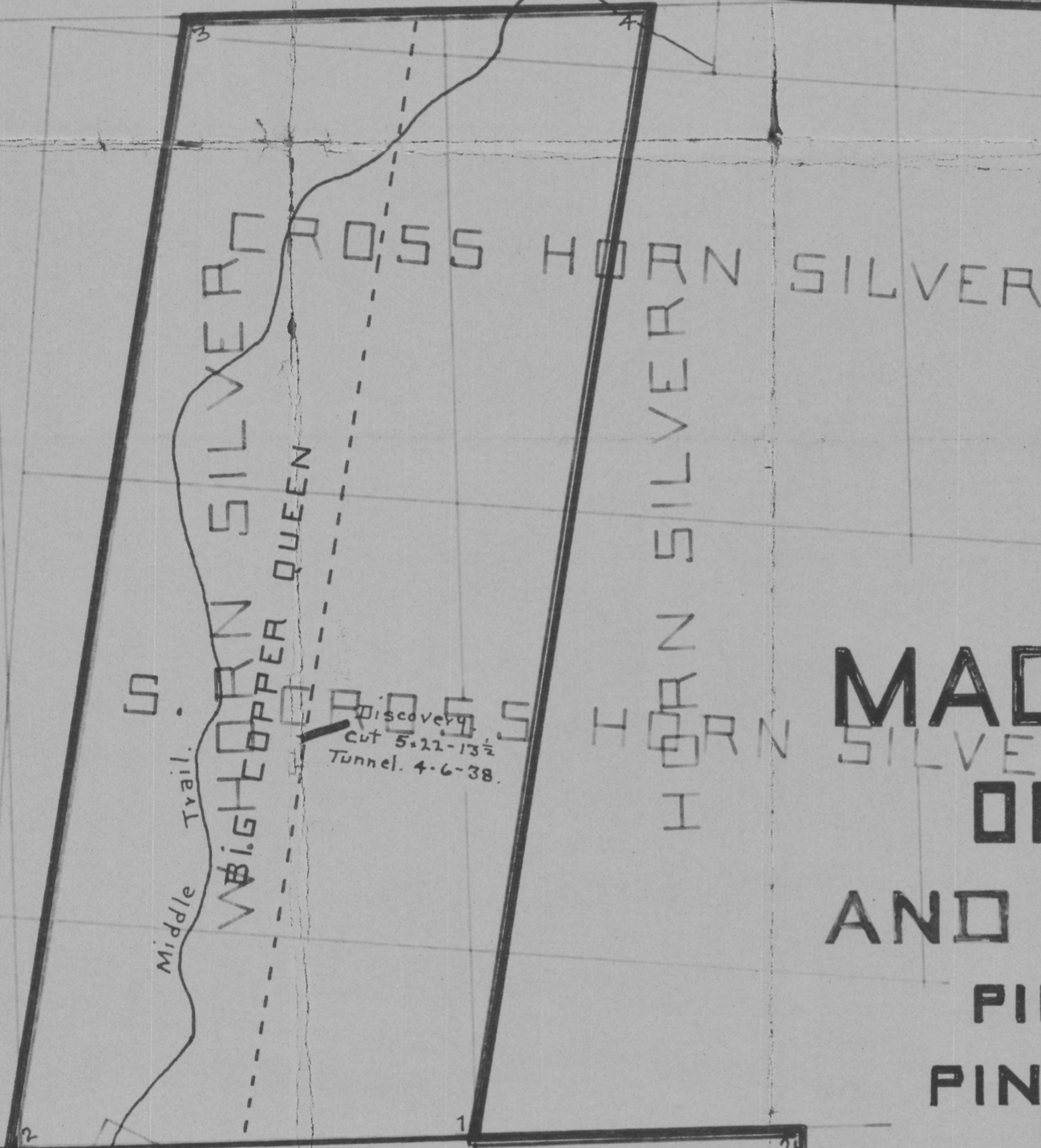
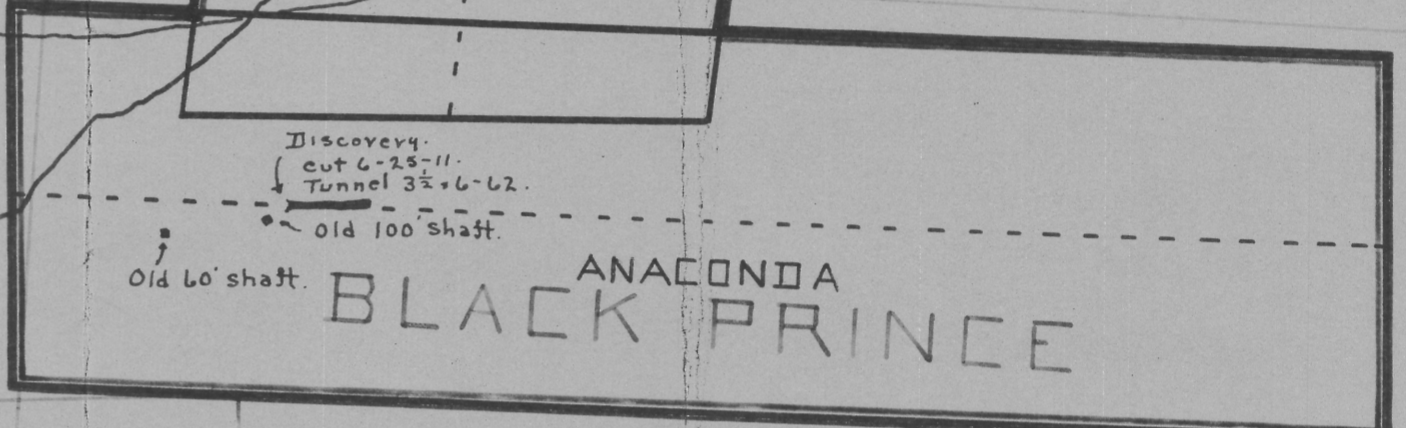
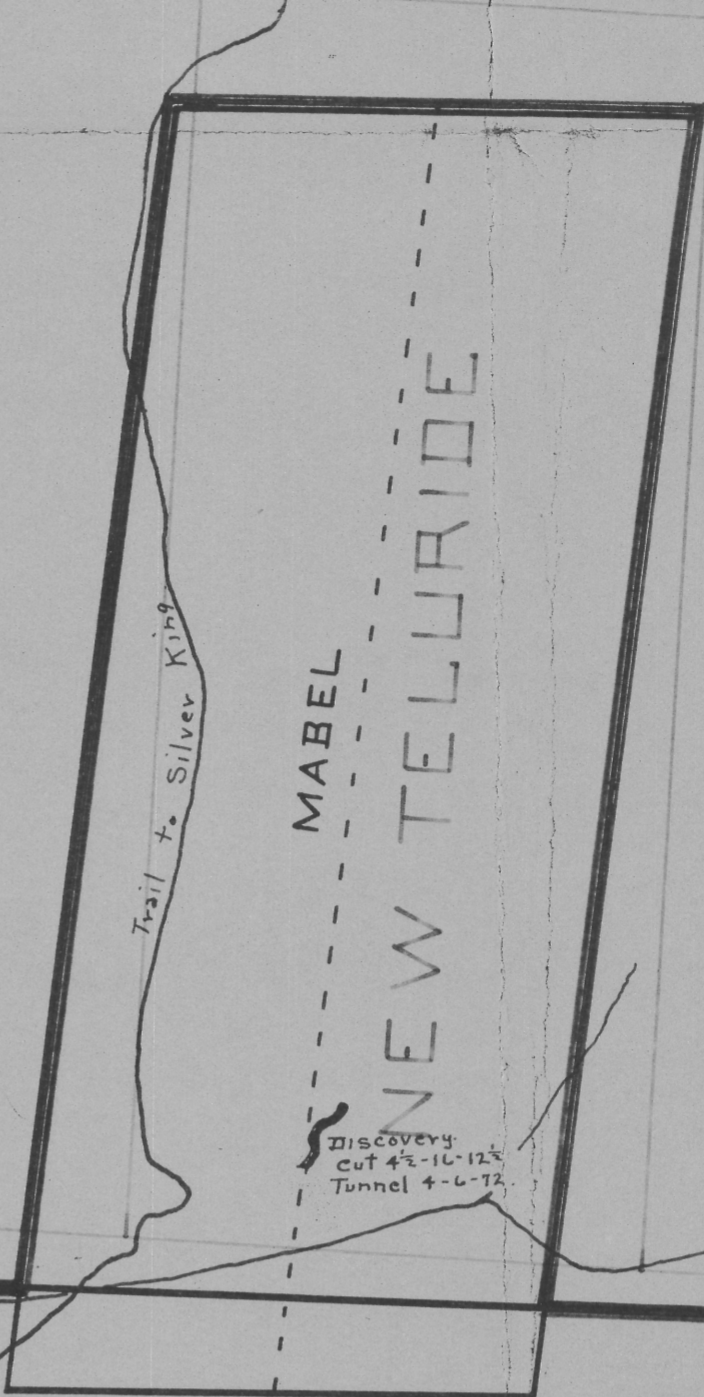
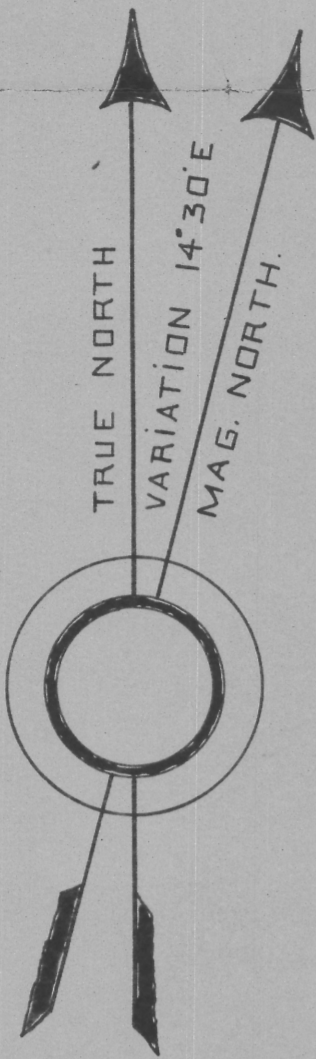
from which this plat has been made under my direction, have been examined and approved, and are on file in this Office, and I hereby certify that they furnish such an accurate description of said Mining Claims as will, if incorporated into a patent, serve fully to identify the premises, and that such reference is made therein to natural objects or permanent monuments as will perpetuate and fix the locus thereof. I further certify that Five Hundred Dollars worth of labor has been expended or improvements made upon said Mining Claims by claimant or its grantors and that said improvements consist of 4 cuts & tunnels, total value \$1975.

that the location of said improvements is correctly shown upon this plat, and that no portion of said labor or improvements has been included in the estimate of expenditures upon any other claim. And I further certify that this is a correct plat of said Mining Claims made in conformity with said original field notes of the survey thereof, and the same is hereby approved.

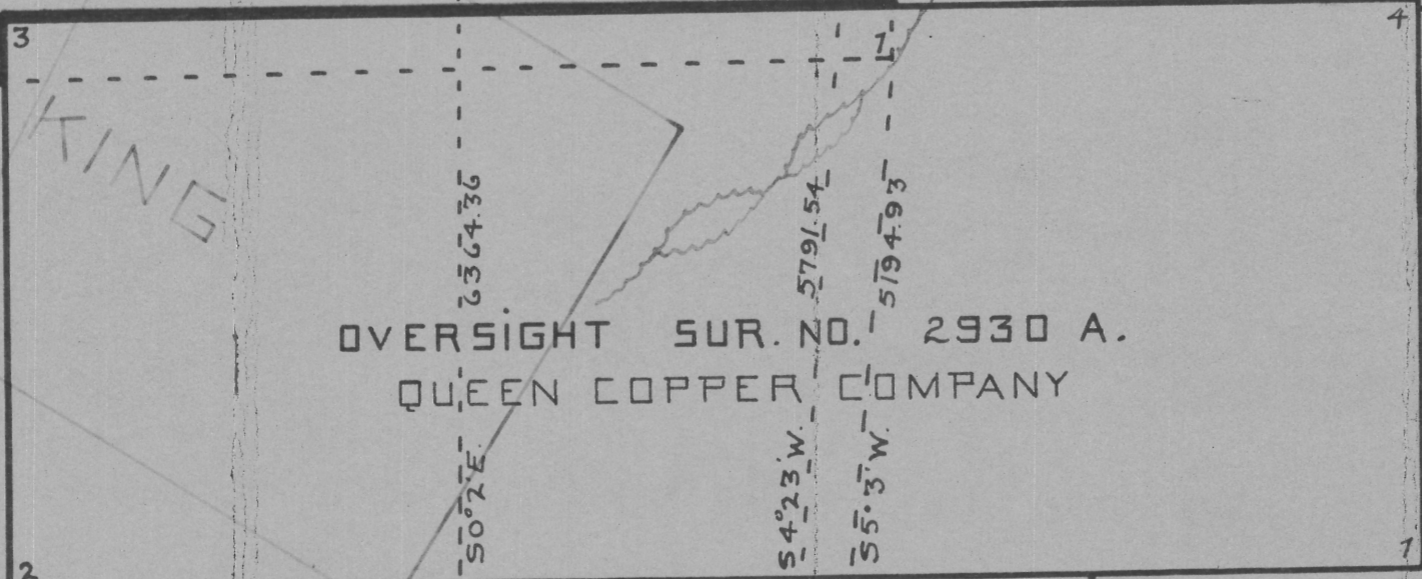
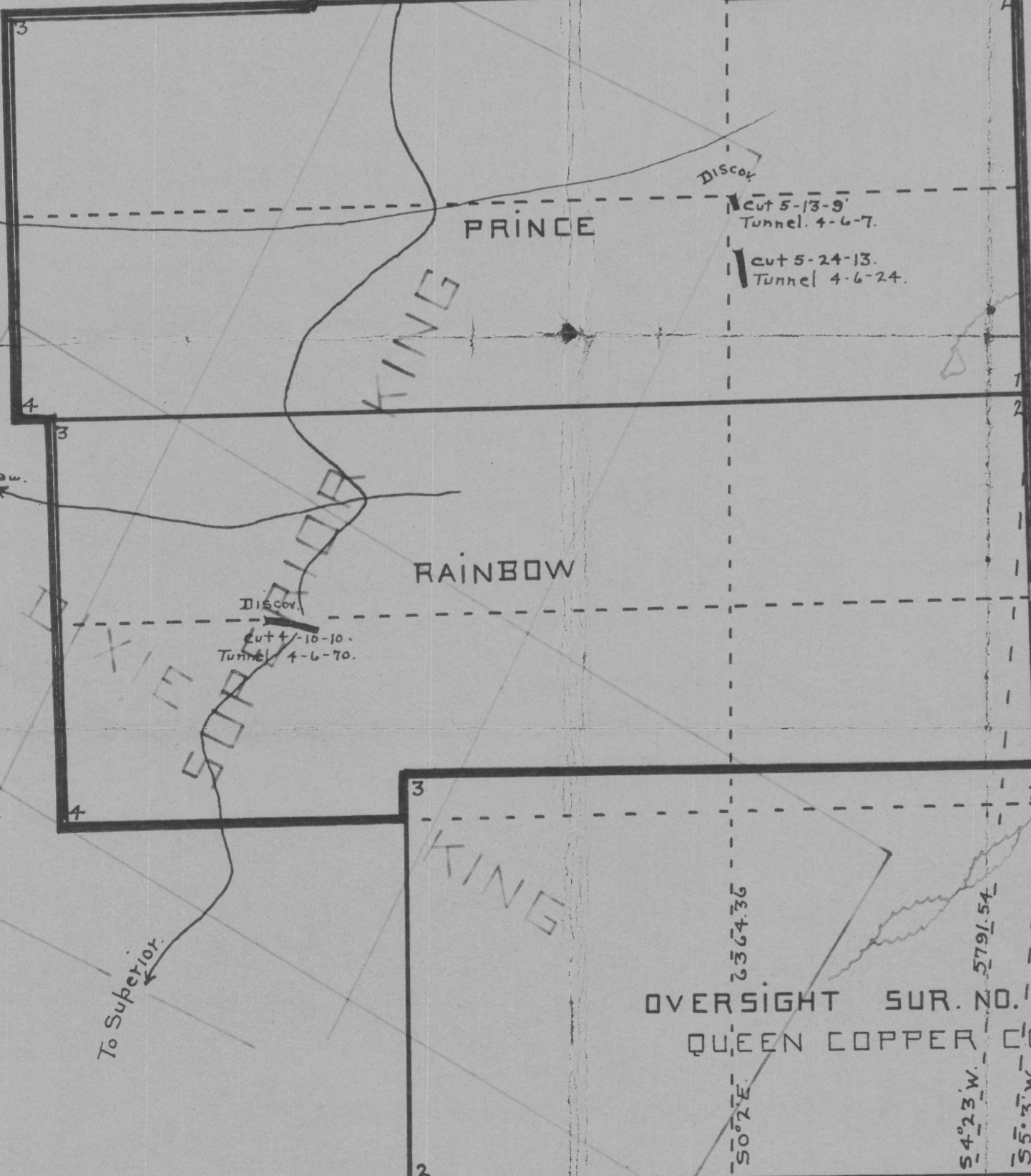
U.S. Surveyor General's Office. *Frank P. Frost*

Phoenix, Arizona. U.S. Surveyor General for

May 24, 1916. **Arizona.**



MAP OF
MAGMA KING GROUP
OF MINING CLAIMS
AND THORPE CONFLICTS
PIONEER MINING DISTRICT
PINAL COUNTY, ARIZONA
SURVEYED DEC. 1916 - JAN. 1917.
BY PAUL E. FERNALD U.S.M.S.
SCALE OF MAP 200 FEET = 1 INCH.



to S $\frac{1}{4}$ Cor. Sec. 35, T 15, R 12 E, G & S. R. M.