



The Maricopa Lapidary Society has donated two display cases to the Museum for use in the gift shop area. Ann Baker, Gift shop Manager, says the Museum can now offer additional fine mineral specimens and other fragile items for sale.



### Arizona Department of Mines & Mineral Resources

1502 West Washington  
Phoenix, Arizona 85007

Address Correction Requested

#### BOARD OF GOVERNORS

**James Miller** -  
Chairman -  
Sun Lakes

**David C. Ridinger**  
Vice Chairman -  
Tucson

**Ray Grant**  
Member - Chandler

**P.K. Rana Medhi**  
Member - Casa  
Grande

**Samuel O. Aubrey**  
Member -  
Scottsdale

#### STAFF

**W. "Doug" Sawyer** -  
Director

**Ken A. Phillips** - Chief  
Engineer

**Nyal J. Niemuth** - Mining  
Engineer

**Diane Bain** - Public Infor-  
mation Officer

**Ann Turney** - Administra-  
tive Assistant

**Tina Mendoza** - Secretary

**Susan Celestian** - Curator

**Liz Anderson** - Tour  
Guide

**Ann Baker** - Tour Guide

**Shirley Coté** - Tour Guide

**Joanne Hesterman** - Tour  
Guide

**Alice Rosenfeld** - Tour  
Guide

**Laurette Kennedy** - Tour  
Guide

## ARIZONA

No. 39 November, 2004

### Mineral Resource

#### *Copper Mining contributes \$2.7 billion to Arizona Economy*

Rising copper prices in the last half of 2003 boosted the Arizona copper industry's direct and indirect contributions to the state's economy to nearly \$2.7 billion, according to a report issued by the Western Economic Analysis Center (WEAC).

This combined category includes personal income, business sales, and government revenues. The total for direct impact was \$1.1 billion in 2003.

The study, which is commissioned by the Arizona Mining Association and authored by George Leaming, reports that 18,000 Arizona jobs were attributed to the copper industry in 2003. The copper industry directly employs almost 6,000 Arizonans and indirect employment accounts for 12,000 more. The average pay for copper industry workers is almost \$50,000.

Nationally, Arizona's copper industry contributed \$11 billion to the economy. Included was \$600 million in federal government revenues, or about \$3,200 for each acre used for copper mining.

#### *Consultants Directory Released*

In October the Department released Directory 50, *Arizona Mining Consultants* by Nyal J. Niemuth. It is a compilation of Arizona-registrants who are available for consulting work in the following mining-related disciplines: assayers, geological engineers, geologists, geophysical engineers, metallurgical engineers, and mining engineers. Information provided for each consultant includes: name, company name, mailing address, telephone, fax, website, e-mail, and specialty.

Compilation of the directory was made from the Arizona-based registrants at the Arizona Board of Technical Registration's website. The Department contacted each registrant to determine those who are available for consulting and to provide additional information including specialties and a description of their services.

*Arizona Mining Consultants* lists 150 Arizona-registered consultants in the six disciplines. The directory is available at the Department for \$3.00 or can be ordered by mail for \$4.50. The directory is also available free in a PDF format at the Department's website.

Arizona Department of Mines & Mineral Resources, 1502 W. Washington, Phoenix, AZ 85007  
602-255-3791, toll-free in Arizona 1-800-446-4259, [www.admmr.state.az.us](http://www.admmr.state.az.us)

#### *American Sandstone*

Natrock Corporation of Delaware, has acquired 95 percent of the shares of Blaser Corporation owner and operator of American Sandstone. The company operates two commercial stone yards and 12 dimension stone quarries in the Drake - Ashfork area. They mine and fabricate a variety of sandstone and flagstone products. Additionally Donald Blaser is retiring as President of Blaser Corporation and Dayle Blaser has been appointed President.

According to Dayle Blaser there have been no changes in the business, except for Donald's retirement. It was the product quality, current profitability, and growth potential of the locally-owned, natural building stone company that encouraged Natrock to buy the privately-held stock.

#### *Copper Price and Demand*

The price of copper, which had fallen to a 14-year low a few years ago, has risen to a near 15-year high and is expected to go even higher. The price of a pound of copper on the New York Mercantile Exchange got to \$1.47 on October 11.

At the same time, according to Bloomberg, the global inventory fell close to a 14-year low, renewing concern about dwindling supplies available to manufacturers of wire and pipe.

Stockpiles plunged 85 percent in the past year. Accelerating economic growth in China and low interest rates in the U.S. helped spur demand for copper and other metals used in homes and manufacturing.

A typical US home contains 400 pounds of copper wire and pipes, according to the Copper Development Association in New York.



Claim Fees Increased

From US Department of the Interior Notice, August, 2004

As of June 30, 2004, mining claim location and maintenance fees were increased. The new fees went into effect for the 2004-2005 assessment year. By law, claim fees must be adjusted for inflation based on the U.S. Consumer Price Index.

Maintenance fees have increased from \$100.00 per claim to \$125.00 per claim. In order to comply with this new increase, maintenance fees for 2004-2005 assessment year (\$125.00 per claim) had to be paid on or before September 1, 2004. If claimant did not pay the additional amount due within 30 days after the date the notice of the deficiency was received, the affected mining claims or sites were forfeited. New mining claims located on or after September 1, 2004, require a total of \$165.00 per claim (\$10.00 service charge, \$30.00 location fee and \$125.00 initial maintenance fee).

Transaction	Amount due per mining claim or site	Waiver available
(a) Recording a mining claim or site location (part 3833)	A total of \$165, which includes: (i) A \$10 service charge (ii) A one-time \$30 location fee (iii) An initial \$125 maintenance fee	No No No
(b) Amending a mining claim or site location (Sec. 3833.20)	A \$5 service charge	No
(c) Transferring a mining claim or site (Sec. 3833.30)	A \$5 service charge	No
(d) Maintaining a mining claim or site for one assessment year (part 3834)	A \$125 annual maintenance fee	Yes, see part 3835
(e) Recording an annual FLPMA filing (Sec. 3835.30)	A \$5 service charge	No
(f) Submitting a petition for deferment of assessment work (Sec. 3836.30)	A \$25 service charge	No
(g) Maintaining an oil shale placer mining claim (Sec. 3834.11(b))	An annual \$550 fee	No
(h) Recording a notice of intent to locate mining claims on Stockraising Homestead Act Lands (part 3838)	A \$25 service charge	No

The chart below reflects the new fees. No change has been made to the filing of the small miner's waiver (Maintenance Fee Waiver Certification) or the affidavit of assessment work/notice of intent.

The full language of this new ruling was published in the Federal Register on July 1, 2004, and notification can also be found at BLM's Internet Home Page (www.blm.gov). If you have any questions, please contact the Information Access Center in Reno at 775-861-6500, the Arizona BLM Regional Office at 602-417-9200, or the ADMMR.

Morenci Mine Resumes Tours

Tours of the Morenci Mine are being resumed by Phelps Dodge in cooperation with the Chambers of Commerce of Graham and Greenlee Counties.

Tours operate twice a day each Friday and Saturday at 9:00 a.m. and 1:00 p.m. The 2-hour tours begin and end at the Morenci Motel. After a safety briefing at the motel visitors board a bus to go to the mine sites. A retired Morenci Mine employee serves as tour guide. Visitors get

an overall look at the mine, a close-up view of a gigantic haul truck, and go inside several facilities used to process copper ore.

Advance reservations are required and can be made by calling 1-877-646-TOUR (8687). The tours cost \$8 for adults, \$7 per person for groups, \$6 for seniors 65 and older, and \$4 for children 9 and above. Children younger than 9 are not permitted on the tours.

Morenci is North America's largest open-pit copper mine. The mine employs about 2,000 people and produces more than 20 percent of the copper mined in the United States.

Museum News

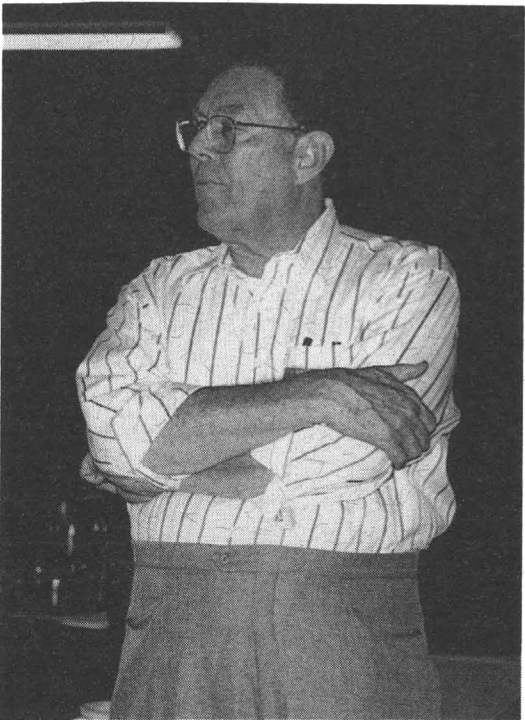
by Susan Celestian, Curator

The halls are once again reverberating with the squeals of delighted school children. It is a joy to hear them as they discover what we all know – minerals are cool!

It was my pleasure to be a judge this year in the Minerals Department of the Arizona State Fair. It was SO much fun to take the time to look at the gorgeous minerals that are the pride of local collections. One of the cutest entries was a brown river rock with the white remnants of a fossil clam that were exposed so that there was an eye and a smile – A Smiley Rock. To make my experience even better, I got to choose the winners of the Department's awards. Erika Richardson won the Outstanding Exhibit in Division 004, Minerals and Jewelry Junior. She will receive a brass, engraved bookmark and a mineral identification book. Joanne Hesterman won for Division 011, Adult Educational Exhibit, for her exhibit on the Formation of Agates. Both exhibits are eligible to be displayed in the Museum for a period up to six months.

Saturday, October 16 was Family Day; and what a day it was. About 650 visitors came to participate in the activities, and the Museum was abuzz with people from 8:30 a.m. (we open at 10:00) until 4:00 p.m. Attendance was up by about 45% over last year!! It seems that Phoenix is "Discovering the Treasure".

Halloween marks my 10-year anniversary as a Museum employee. It has gone by so fast! I work with such a wonderful bunch of people, staff and volunteers, that it is a pleasure to go to work every day. There is so much talent, imagination and dedication here. Thanks to everyone for putting up with me this long.....



Dick at the Arizona Mineral Symposium in 1999. Photo courtesy of Genie Howell.

Richard A. Bideaux – 1935 - 2004

The Department was saddened to hear of the death of Richard Bideaux. The mineral and mining world has lost a gifted scholar. Dick was co-author, along with John Anthony, Sidney Williams, and Raymond Grant, of *Mineralogy of Arizona*, 1<sup>st</sup> to 3<sup>rd</sup> editions, the definitive reference on Arizona minerals. He was also co-author, along with John W. Anthony, Kenneth W. Bladh, and Monte C. Nichols, of the *Handbook of Mineralogy*, Volumes 1 – 5. Volume 5, the last in the series, was only recently completed. All of these works benefitted from Dick's meticulous attention to detail and his remarkably broad knowledge of mineralogy.

In 1970 Dick had a mineral species, bideauxite, named for him. Although Dick's gift for technical writing belonged to the world, Dick himself belonged to Arizona, where he has become an icon of Arizona mineralogy. Dick attended the first Tucson Gem and Mineral Show in 1954, as a 19-year-old dealer, and was at the 50<sup>th</sup> anniversary show last February. There will be a memorial service for Dick at the 2005 show.

Arizona and the science of mineralogy have suffered an irreplaceable loss with the passing of Dick Bideaux.



Do you need this information in an alternative format? Please call the Department at 255-3795.