

#### URBAN SYSTEMIC INITIATIVE

Curator Glenn Miller and Education Curator Susan Celestian provided training to local teachers on minerals and science this summer. The next seminar will be "Geology in the Park" on December 6. These workshops are co-sponsored by the Arizona Mining Association.

#### BOARD OF GOVERNORS

**William J. Miller** -  
Phoenix - Chairman

**Richard Oldham** -  
Quartzsite - Vice Chair-  
man

**Sydney Hoff-Hay**  
Phoenix - Secretary

**Eric A. Nordhausen** -  
Tucson -Member

**Ken C. Bennett** -  
Phoenix - Member

#### STAFF

**H. Mason Coggin** -  
Director

**Ken A. Phillips** -  
Chief Engineer

**Nyal J. Niemuth** -  
Mining Engineer

**Ann Turney** - Admin-  
istrative Assistant

**Diane Bain** - Editor

**Marianne Char-  
nauskas** - Secretary

**Glenn Miller** - Curator

**Susan Celestian** -  
Curator of Education

Tour Guides  
**Alice Rosenfeld**  
**Joe McIntosh**  
**Ann Baker**  
**Doug Duffy**



Arizona Department of Mines & Mineral Resources  
1502 West Washington  
Phoenix, Arizona 85007

*Address Correction Requested*

## Mineral Resource

### INTERNATIONAL PRECIOUS METALS

In the lawsuit filed by IPM (International Precious Metals) against the Department, Judge Donald F. Daughton ruled in favor of the plaintiff, IPM, finding ADMMR had exceeded its statutory duty by opining.

It is the Court's judgment that the Department does not have the statutory authority to publicly predict the likelihood of success or economic viability of a particular mining operation, to opine as to the value of stock in a mining company, or to give out financial investment advise. Judge Daughton also ruled that the State will not be required to pay IPM's attorney fees.

The Department became involved with the BRX property when asked to investigate by the Toronto Stock Exchange. On March 30, 1994 Nyal Niemuth sampled the property attempting to corroborate the company's claims of platinum and gold. The samples, which were delivered to an Arizona-registered assayer, reported nil platinum and gold.

In the original Notice of Claim, filed April 28, 1997, IPM asked for \$25 million in punitive damages from the Department and from Mason Coggin, Director, and Nyal Niemuth, Mining Engineer, personally, for "libel, slander, intentional interference with prospective economic advantage, and injurious falsehood." IPM also cited the "intentional and malicious nature of the conduct of Coggin and Niemuth" when the Department failed to corroborate their claims of high platinum and gold values. IPM alleged the Department "refused to acknowledge that IPM's independent and credible test results prove them wrong." IPM did not proceed with these claims in court but rather only sought to enjoin the Department from acting outside its statutory authority.

Concerns have been expressed in the media that this ruling may impair the Department's and other agencies' ability to protect the public and provide information.



Do you need this information in an alternative format? Please call the Department office at 255-3791.

Arizona Department of Mines & Mineral Resources, 1502 W. Washington, Phoenix, AZ 85007  
602-255-3791, toll-free in Arizona 1-800-446-4259  
H. Mason Coggin, Director

### COPPER IMPACT AT \$ 9.647 BILLION

The Learning Report\* is out and states the economic impact of the Arizona copper industry on the State of Arizona is \$9.647 billion, including the combined direct and indirect impacts. Other figures on the copper industry show that 12,600 employees of the copper industry produced 1,368,514 tons of copper with a cash value of \$3.131 billion. The copper mines paid \$132 million in taxes to state and local governments, spent \$1.292 billion with Arizona businesses for products, goods, and services and paid \$647.546 million to Arizonans in wages, salaries, and personal incomes.

\*Learning, George F., Ph.D. "The Economic Impact of the Arizona Copper Industry 1996," Western Economic Analysis Center, Marana Arizona April 1997, available from the Arizona Mining Association, 602-266-4416.

### COPPER CREEK

AMT International Mining Corporation announced in October the completion of a positive feasibility study at Copper Creek, 45 miles northeast of Tucson. The project is comprised of properties joint ventured with BHP and Phelps Dodge.

Phase I of the 3-phase feasibility study examined open-pitting leachable reserves at Old Reliable and underground mining sulfide ores at Childs Aldwinkle and Creek breccias. Data from over 100 drill holes identified 11.4 million tons averaging 1.3 percent copper. Estimated capital costs for production would be \$52 million.

### MISSION GETS PRELIMINARY APP

The Arizona Department of Environmental Quality has made formal notice that it intends to issue an individual Aquifer Protection Permit to ASARCO Mission's No. 4 tailing facility located near Sahuarita in Pima County. The facility is necessary for their mining operation and will receive tailings in slurry form from the Mission Complex concentrators. The capacity will be approximately 309 million tons and hold about 30 years of tailings.

## HELVETIA

The Pima County Board of Supervisors met in the Tucson Community Center to hear testimony and vote on a resolution asking the Forest Service not to approve ASARCO's request for a land swap. Although the action by the Board of Supervisors is believed to have little effect or weight with the Forest Service, the exchange would allow ASARCO to treat the property as private property. Offered in return for the property requested by ASARCO are some inholdings the Forest Service would be happy to have. The meeting was attended by about 500 people.

## PLUESS STAUFER

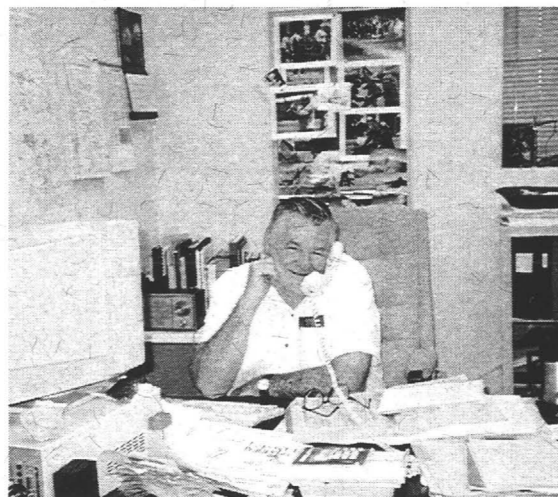
Pluess Staufer's Omya division is reported to have purchased the Queen Creek Limestone deposit in Pinal County near Superior. The deposit supplies high quality white marble to Minerals Development Incorporated Superior Marble crushing and screening plant in the community of Queen Creek. Omya is a major producer of calcium carbonate for the filler-extender and chemical industries. This marks the entry of a third major producer of calcium carbonate into Arizona. Specialty Minerals (formerly Pfizer Minerals) and Georgia Marble have established operations in Arizona during the last eight years.

## U.S. NAVY MILL GETS PRELIMINARY APP

The U.S. Navy mill, located 5 miles east of Skull Valley has received notice from the Arizona Department of Environmental Quality of its decision to issue an individual aquifer protection permit. The permit will allow the mill to operate 3 tailing impoundments and a custom mill facility. The facility includes loading, crushing, separating and gravity flotation of custom ore. The source or potential sources of the mill feed were not discussed.

## OWENS CORNING

Owens Corning Fiberglass has acquired the 3 fiberglass insulation manufacturing plants owned by Western Fiberglass including the plant in Eloy. Western Fiberglass will continue to operate under that name. Owens Corning has expressed an interest in finding Arizona sources of supply for the plant's raw materials. All raw materials are currently shipped into Arizona.



## MARICOPA AIME ELECTS OFFICERS

For the second time in 27 years H. Mason Coggin, ADMMR Director, will serve as Chairman of the Maricopa Chapter of the Society for Mining, Metallurgy and Exploration. He succeeds Al Lee who has chaired the section for several years. Terry Jensen of Horizon Environmental will serve as Vice Chairman and Bruce Nave will continue his third year as Program Chairman where he has done a phenomenal job of bringing industry leaders to AIME for programs. Chuck Nolan will head up the Education Committee where he has also done a fine job for many years. Carol O'Brien has held down this position since 1988! The Maricopa Section is indeed fortunate to have Carol.

## WHITE VULCAN MINE

The Coconino National Forest is evaluating a plan of operation for Tufflite, Inc.'s planned White Vulcan expansion. The pumice operation is located east of the San Francisco Peaks. The mine furnishes pumice for light weight aggregate materials that provide light weight, high strength, and thermal and noise insulation properties, and also supplies pumice to the garment finishing industry.

Ken Jacobs, Coconino National Forest, Peaks Ranger District hopes to complete the Alternatives and Analysis by September, 1997. If you have comments regarding the desirability of this project please contact Ken Jacobs, Lands Staff (520) 526-0866.

## MUSEUM NEWS

### MUSEUM EXHIBITS

The cleaning and re-labeling of display cases continues. As this work progresses, the cases are also re-lamped as needed and the collection archives verified and corrected. Some of the new displays installed include Dinosaur Fossils, Minerals of Ajo, Energy Resources of Arizona, Fossil Classification, and Arizona Fossils. The Museum has responded to increased interest in fossils since the release of the movie, *Jurassic Park*.

### NEW MINERAL MUSEUM AT PEARCE - SUNSITES

The Sunsites Gem and Mineral Club has their own mineral museum with the curator living on the premises. If you are planning to be in the area and want to tour the museum call (520) 384-2619 and request a tour and directions on how to reach the museum.

## 7TH ANNUAL FAMILY DAY

Let the seasoned prospectors tell you where the gold really is. The 7th Annual Family Day and Prospectors Show will be held on Saturday, February 21, 1998 from 11:00 am to 4:00 pm at the Museum.

This fun-filled event, co-sponsored by the Arizona Prospectors Association, features hands-on activities for all ages. There will be gold panning, metal detecting, prospecting equipment demonstrations, lapidary demonstrations, and jewelry making. Readers Theater presentation by actors from the Actors Guild and Community Theater will be provided. Admission to the event is free. There is a small fee for participation in some of the activities.



## Bon Appetite

The famous "Banquet of Rocks" was donated to the Museum this year by the Arizona Mineral and Mining Foundation. The display was collected over a period of 35 years by Arless and Margaret Nixon. The 300-piece collection will be used as a specialty exhibit until a secure area can be built to display it.