

XTRA COPY

33RD

FISCAL YEAR 1971 - 1972

ANNUAL REPORT



ARIZONA DEPARTMENT OF MINERAL RESOURCES

Fairgrounds

Phoenix, Arizona

JOHN H. JETT, DIRECTOR.

Honorable Jack Williams
Governor of Arizona
Capitol Building
Phoenix, Arizona 85007

Dear Governor Williams:

In accordance with ARS 27-106 we are pleased to submit the annual report of the Department of Mineral Resources. The report covers the Department's activities for fiscal 1971-1972.

The mining industry's basic role in society is to provide vital raw material that is responsible for our present quality of life.

Sometimes the role is needlessly jeopardized, then other types of responsibilities become involved - an obligation to be heard - to ask questions - to present alternatives - define cost-benefit, and establish rational objectives.

It is the intent of the Department of Mineral Resources to meet all responsibilities in fulfilling its prime obligation to "Promote the mining industry of Arizona."

BOARD OF GOVERNORS,
ARIZONA DEPARTMENT OF MINERAL RESOURCES

William T. Elsing, Chairman
Kenrick L. Lamb
Robert C. Bogart
Robert E. Heineman
Walter E. Heinrichs, Jr.

BOARD OF GOVERNORS

William T. Elsing - Chairman - Phoenix
(Term expires January 31, 1976)

Kenrick L. Lamb - Tucson
(term expires Jan. 31, 1973)

Robert E. Heineman - Tucson
(term expires Jan. 31, 1975)

Robert C. Bogart - Bagdad
(term expires Jan. 31, 1974)

Walter E. Heinrichs, Jr. - Tucson
(term expires Jan. 31, 1977)

PERSONNEL

John H. Jett
Mrs. Glenn W. Pare
Fremont T. Johnson
Glen Walker
Gerald W. Irvin
Mrs. Pauline Halloren
Gina Schillereff
Judy McClish

Director
Adm. Assistant
Field Engineer
Field Engineer
Field Engineer
Secretary
Secretary
Secretary

Frank P. Knight

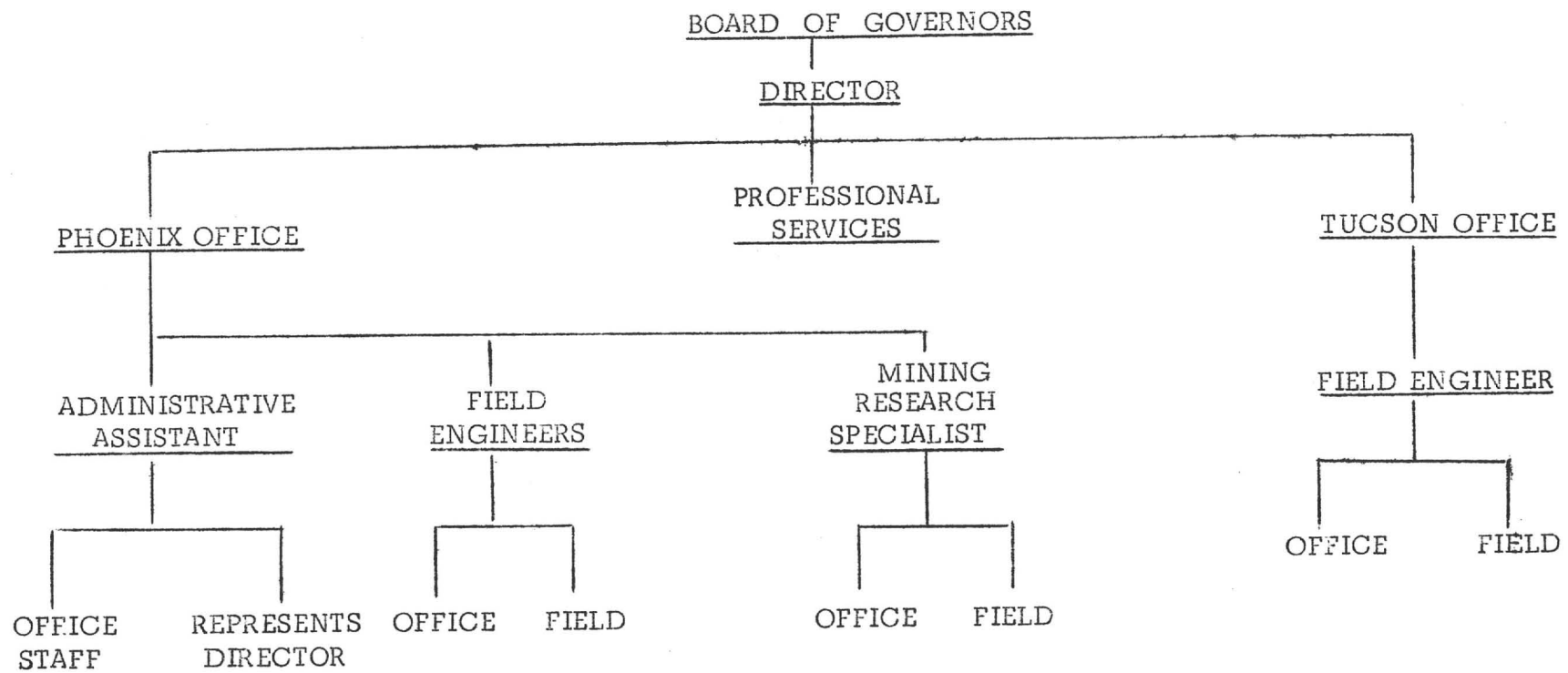
Consultant

OFFICES

Phoenix Office - Mineral Building, Fairgrounds

Tucson Office - Room 106, State Office Building

ORGANIZATION CHART



STATUTORY POWERS AND DUTIES

Aid in the promotion and development of the mineral resources of the state.

Conduct studies of the economic problems of prospectors and operators of small mines for the purpose of assisting in their solution.

Assist in discovering sources of supply for persons desiring to buy minerals.

List and describe available mining properties.

Make mineral resource surveys and conduct other investigations which may interest capital in the development of the state's mineral resources.

Serve as a bureau of mining information in conjunction with the Arizona Bureau of Mines.

Publish and disseminate information and data necessary or advisable to attain its objectives.

Cooperate with the state land department to encourage mining activity on state lands.

Cooperate with the corporation commission in its investigations and administration of laws relating to the sale of mining securities.

Cooperate with the Arizona Bureau of Mines, and deliver to the bureau problems which the field work of the division shows to be within the scope of the activities of the bureau.

Cooperate with federal and other agencies designed to develop mines and minerals.

Oppose congressional acts favoring reciprocal or duty free imports of foreign minerals.

Use its authority in other ways to assist in more extensive exploration and development of the mineral resources of the state.

CONTENTS

	<u>Page</u>
ARIZONA MINING	
Value of Arizona's Mineral Production	1-2
Activity	3
Employment	3
County Activity	4-8
Interesting High-lights	9-12
DEPARTMENT OF MINERAL RESOURCES	
Board of Governors	i
Personnel	i
Offices	i
Organization Chart	ii
Statutory Powers and Duties	iii
Department Activities	13-17
Statistical Operating Data	18
Statement of Expenditures	19
TABLE	
Value of Mineral Production in Arizona	1

VALUE OF MINERAL PRODUCTION
IN ARIZONA 1/

	<u>1971*</u>	<u>1970</u> Increase or Decrease	<u>1969</u> Increase or Decrease
Copper	\$842,509,000	\$ -216,768,000	\$ + 80,669,000
Molybdenum	40,580,000	+ 13,880,000	+ 19,633,000
Sand and Gravel	20,483,000	+ 679,000	+ 2,259,000
Silver	9,918,000	- 3,063,000	- 1,079,000
Stone	6,810,000	- 284,000	+ 998,000
Petroleum	4,147,000	- 1,134,000	- 2,909,000
Lime	4,348,000	- 175,000	- 726,000
Gold	3,687,000	- 311,000	- 916,000
Zinc	2,576,000	- 371,000	- 63,000
Helium	1,150,000	- 36,000	+ 24,000
Pumice	599,000	- 28,000	- 215,000
Clay	484,000	+ 30,000	+ 90,000
Gypsum	364,000	+ 6,000	- 60,000
Gem Stones	135,000	- 20,000	- 18,000
Lead	36,000	- 53,000	- 29,000
Asbestos, Cement, Coal, Diatomite, Feldspar, Iron Ore, Mica (Scrap), Natural Gas, Perlite, Pyrites, Tungsten Concentrate	29,973,000	+ 8,868,000	+ 10,878,000
Total	\$967,699,000	\$ -199,068,000	\$ +108,237,000

* Preliminary

1/ Source: U.S. Bureau of Mines

ARIZONA MINERAL PRODUCTION

The value of Arizona's total mineral production in 1971 was \$967.7 million. This was a decrease of \$199.1 (17%) from 1970 which was a record year. However, it was an \$108.2 million increase (13.6%) over 1969. Copper accounted for \$842.5 million (87%, total) which was a decrease of \$216.8 million from 1970 but an \$80.7 million increase over 1969.

Molybdenum production increased \$13.9 million for a total of \$40.6 million. This was the second most dollar productive mineral to be mined.

Coal production increased, sand and gravel had a small increase and some of the non-metallics were able to show small gains. Otherwise production was down in most of the minerals including gold, silver, petroleum and helium.

The gold and silver decrease resulted from a nationwide strike in the copper industry. Molybdenum did increase in spite of the strike due to the Duval Sierrita mine coming into production.

Details of the value of production of the various minerals may be found on page 1 of this report.

MINING ACTIVITY

A listing of active mines is a part of the report. It includes only the mines in continuous production and does not include the small producer that works only intermittently. He would be classified under exploration or prospecting.

The active mine list shows 67 operating mines, of which 45 are non-metallic. 37 mines employ from 0-20, six employ 20-50, two employ from 50-100 and 22 employ more than 100.

A list of major exploration companies is also attached. Fifty four companies are included. There are many smaller companies, intermittently active or with very limited funds that are not included. Individuals are not listed.

The summation of the active mines and the list of exploration companies are in great demand from the public, mining industry, businessmen and other governmental agencies. They are published as separate publications to meet the need and demand and to permit distribution.

COUNTY ACTIVITY

APACHE Exploration activity appeared to be at a minimum with no signs of an increase. The production of pumice, clay, hydrafrac sand and stone was approximately the same as the previous year. Coal mining started in this period and will contribute substantially in the future.

COCHISE Copper production was scheduled to decline due to the closing of the Lavender Pit. However, production did continue at a slightly reduced rate. Lime and silica production was maintained and gold and silver was recovered from the copper ore. Exploration activity was very extensive and included the following: Superior Oil drilling in the Dagoon area - Prospect and assessment work at Middlemarch and Turquoise mines - Bear Creek and Minerals Exploration Company working near Gleeson - Sidewheel mine prospected - a Canadian firm optioned the Ellsworth claims - Gordon Miles Mining Company acquired claims near the Mascot - activity at the Centurion, Sidewheel and Lutz Tunnel.

COCONINO Cinders for the railroads and block manufacturing, stone, sand and gravel was the major mining activity for the area. Exploration was not noticeable to any extent although considerable interest is being shown in the "sandstone coppers". Litigation was settled on the White Mesa Copper property.

GILA Copper, molybdenum, asbestos and stone were the principle minerals mined. A fluorspar mill went into operation. It was successful and plans were made to expand 50%. By-product gold and silver added to total mineral production value. Exploration was extensive. Occidental

continued drilling in Miami - Inspiration evaluating Pinto Valley - Miami east ore body shaft sinking continues - Red Hills Exploration drilling - Gibson mine being evaluated and shipping some precipitate - Bear Creek drilling between Chillito and Troy mines - Hanna drilling between Inspiration and Castle Dome. Bad publicity in national newspapers may have an adverse effect on asbestos production.

GRAHAM Activities continue that indicate Graham County will become a major mining center. Hanna Mining drilling in the Klondyke area - Phelps Dodge continues underground exploration - Inspiration continuing with metallurgical tests on Sanchez ore body - Essex obtained many claims - Rainbow Mining staked 159 claims - Quintana drilling near Phelps Dodge - Amax active near Sanchez - assessment work on the Brushy group - activity noted on diatomaceous earth and chabazites - Producers Minerals closed down but a major company is trying to obtain the property.

GREENLEE Copper, silver, lime, gold, stone, sand and gravel, all were produced, with production estimated normal. Phelps Dodge Metcalf project resumed - Phelps Dodge staked a number of claims - Essex International did some work in the King Mountain area - Other intermittent exploration activity noted.

MARICOPA Sand and gravel, salt, stone and mica were the major minerals produced. Experimental leaching of small copper deposits, evaluating a kaolin deposit, mica development, and extraction of beauty mud near Black Canyon were activities conducted. Kaiser drilled a copper prospect - Tonopah-Belmont explored for copper and gold - clay and fluorspar

testing and several gold properties in the Cave Creek area were minor activities. Unfortunately, there was much Platinum promoting during the year. Much time was spent on this. Salt was solution mined and sold mostly as a cattle feed supplement.

MOHAVE Copper production remained steady. By-product molybdenum, silver, sand and gravel, stone and feldspar were produced. Standard Metals closed the Antler mine - King Midas and Americana's White Chief mine continued development work at Oatman. Cactus Mining tested scheelite at Wikieup and planned a mill - Inland Copper drilled southeast of Yucca. Other minor exploration activity was noted.

NAVAJO Mineral production is minor in this county. Sand and gravel plus some iron ore were major minerals - some stone produced.

PIMA Copper is the big item with Pima Mining and Duval Sierrita undergoing expansion. However, Duval Esperanza was forced to close completely in December due to an excess of concentrate. It was estimated they would be down for a year. Molybdenum production increased considerably. Cement, silver, sand and gravel, lime, gold, clay, zinc and lead were produced. Santa Rita Mining started lime production - Cement production increased - Exploration and development was very extensive including the following activities: Quintana Minerals and Austral Oil in Arivaca area - Continental Copper at Control mine - Amax and Asarco near Silver Bell - San Xavier No. 2 ready to start up - drilling in Organ Pipe National Monument - Silver Coin, Silver Ray, Indiana-Arizona, Silver Hill, Ventana, Emperor-Duchess, Steppe Mine all were active to some degree.

PINAL Copper is the big item in this county. By-product molybdenum, gold and silver were produced. In addition, perlite, lime, gypsum and sand and gravel were of significant value.

The big news was the expansion of San Manuel including the refinery and a new rod plant. Hecla Mining Co. and Magma Copper at Superior continued development. Continental Oil Co. continued exploration and announced a 500,000,000 ton orebody. Several small properties attempted leaching and were not successful. Red Hill Mining shut down but continued exploration drilling. Norandex finished exploration at Mineral Butte and moved to Gold Mine Mtn. Kennecott picked up Copper Butte. Ranchers Exploration blasted the Old Reliable for an in-situ leaching project.

SANTA CRUZ Mineral production was minor but exploration activities were extensive. Sand and gravel, stone and lead was the major production. Kerr-McGee continued deep drilling on a copper ore body - Rosario Exploration started sinking the Indiana shaft - CF&I shipped some high grade ore from the Glove but was forced to close - they continued exploration east of the mine - Cominco drilled near Fresnal Canyon. Some minor activity noted at the St. Christopher, Cramer, Edna and Silver Ray.

YAVAPAI Copper, cement, zinc, stone, sand and gravel, lime, gypsum and clay were the major mineral activities. Bagdad Copper plans an expansion with possibility of a smelter. An inventory buildup of concentrate was being alleviated by shipping to White Pine, Michigan. The cement plant was expanding production by 60%. Considerable exploration activity was evidenced by the drilling activity of Phelps Dodge, Bagdad

Copper, Norandex and Utah Construction. Several geo-chemical programs were conducted. Kalium Mining Co. and Arizona-Michigan Mining Co. were typical of some exploration companies working with the small mines.

Several possible copper leaching deposits were studied or considered but none are successful as yet. Big Reef Mica mine was in litigation and unable to work. Cyprus Mines increased zinc and copper production at their Bruce Mines Division.

YUMA Major mineral activity resulted from sand and gravel and stone and with much exploration and small mine activity. A small fluorspar mill was erected - several dry placers operated intermittently - copper leaching was being tried at some small oxide deposits and some copper ore was shipped. Several of the major exploration companies were giving serious consideration to some of the small mine properties being developed intermittently.

HIGHLIGHTS OF THE 1971-1972 YEAR

July, 1971 Preliminary agreements reached between unions and some of the copper producers - BLM proposes new rules relating to assessment work - Chile expropriates copper mines of U. S. mining companies.

August Anaconda Co., Inspiration Consolidated Copper Co. and American Smelting and Refining Co. union contracts settled. Phelps Dodge and Miami Copper resuming operations after the strike - smelter at Superior (Magma Copper Co.) closed permanently - EPA published final regulations for states to follow in developing plan for clean air by 1975 - perlite plants curtail operations temporarily due to dust abatement work - Morris Udall met with SMEA group in Tucson on his proposed mineral leasing bill - Ray Mines Division of Kennecott Copper Corp. reduces work week in order to work off excess inventory of concentrate - zinc price increases one cent per pound - field hearing on surface mining conducted by subcommittee on minerals, materials and fuels.

September San Manuel produces first cathodes in its new \$34 million electrolytic refinery - proposed Cabeza Prieta Wilderness area hearings held - Phelps Dodge and Asarco start up joint venture elemental sulphur pilot plant - Hecla Mining Co. reached ore at Lakeshore mine south of Casa Grande - Asarco starts up sulphuric acid plant at Hayden - Anaconda Co. temporarily curtails milling at Twin Buttes south of Tucson in order to reduce inventory of concentrates - Ranchers Exploration and Development Co. announces an increase of six-fold of its reserves at its Bluebird mine near Miami - Phelps Dodge announces 35 scholarships for the three Arizona

Universities.

October Ten Arizona mining companies (copper producers) petition Health Board to lower State Air pollution control regulations to Federal Standards - American Mining Congress meets for four days in Las Vegas with environmental concerns and pressures dominating the sessions - Apache Powder Co. (Benson) employees strike - Phelps Dodge contributed \$5,000 to Phoenix United Fund - Cyprus Mines Corp. and Superior Oil Co. considering consolidation of holdings near Benson - Superior Oil recently acquired control of property formerly held by CF&I Corp. and Continental Copper Co. - Southwest Salt Co. in full production - Phelps Dodge donated \$3,000 to Tucson United Fund.

November Phelps Dodge announced it will have to close Douglas smelter unless State air pollution standards are lowered - Newmont announces delay of new Vekol Hills project until smelter pollution problems stabilized - Anaconda announces establishment of new Primary Metals Division with headquarters in Tucson - Newmont Mining Co. awarded 13 mineral education scholarships to Arizona students - Copper prices dropped below 50¢ per pound - Ranchers Exploration and Development Co. announced start of new project; in-situ leaching of an ore body - Phelps Dodge reduces production at Bisbee.

December State Health Board held hearings on all Arizona air quality standard - BLM proposes withdrawal of over 23,000 acres in Virgin Gorge area - Duval Corp. closed its Esperanza mine due to large inventory of concentrates - Kennecott starts 10-acre test planting on tailings dike. Asarco and Papago Indian tribe settled their lawsuit over roads, dumps and

water - Inspiration received one year extension on its variance permit for its smelter - State Land Commissioner requests legislation to increase royalties from mining on State land.

January 1972 Magma Copper Co. dedicates its new San Manuel Refinery and Rod Mill, completing a \$250 million expansion program - Several exploration companies announced curtailment of exploration activities due to economic activities and environmental extremists - State Health Board refuses to relax State air quality standard requirements but held the door open for more hearings - Asarco dedicates its new \$17 million sulphuric acid plant at Hayden - Apache Powder Co. (Benson) strike ends.

February Magma and Kennecott received one year renewal of variance permits for their smelters at Hayden and San Manuel - Bill introduced in State legislature regulating strip and open pit mine regulation - USGS proposes new regulations for processing exploration drilling and mining permits on federal lands - American Cement Corp. announces expansion at its Clarkdale plant.

March Phelps Dodge announces a new smelter to be built in New Mexico - Ranchers Exploration starts a novel in-situ leaching project by detonating 4,000,000 lbs. of explosives - Phelps Dodge continues work on its Metcalf project with production anticipated by mid 1974 - Phelps Dodge states it will not attempt to comply with State air pollution standards at its Douglas smelter but will meet Federal standards - BLM files application for withdrawal of 1,062 acres in Aravaipa Canyon - Copper prices increase 2.25 cents per pound - short work stoppage at Bruce mine of Cyprus Mines Corp. - work continues on \$28 million sulphuric acid plant at Ajo.

April Mining industry encouraged as State Health Board prepares new Air Quality Standards - Bagdad Copper plans major expansion program and possibility of a smelter - Continental Oil Co. reports 500 million ton ore body defined near Florence - President Nixon signed legislation formally raising the value of gold to \$38 an ounce - Asarco started construction on a \$13 million vat leaching facility on the San Xavier Indian Reservation - Cyprus Mines Corp. announced plans to build a \$9 million pilot plant to produce copper, elemental sulphur and iron from copper concentrates - Asarco will develop a \$36 million mine five miles northwest of Casa Grande.

May Miami Copper announces new \$100,000,000 Pinto Valley project, a 40,000 ton a day mine and mill - Inspiration Consolidated Copper completes \$10 million equipment expansion - a Federal grand jury subpoenaed the records of the major copper producers - Amex Exploration Co. filed on 460 claims in Graham County - Tombstone Mining Fair held.

June The EPA announced it is taking over the setting of air quality standards for every copper smelter in the country - Pima Mining Co. completes its \$16.5 million expansion to 53,000 TPD - Department of Property Valuation set full cash value of the mines at over \$912 million, a 15% increase over last year - Kennecott is conducting in-place leaching - Inspiration Consolidated Copper Co. increases its holdings near its Christmas Mine - Kennecott initiates suit against the EPA over State Plan rejection - three exploration companies are drilling near Ajo - Wellman-Power Gas Inc. opens office in Tucson.

DEPARTMENT ACTIVITIES

The new Director has completed his first full year as Director. Perhaps it is well to briefly review the Department, its creation, administration, statutory duties and direction taken by the new Director.

The original duties assigned to the Department have not been altered since their inception. The first and prime duty is to "Aid in the promotion and development of mineral resources of the State." However, the methods of fulfilling this duty has been changing and must continue to change quite drastically.

The Department of Mineral Resources was created by the 14th Legislature in House Bill No. 103, Chapter 27. This Bill became law March 1, 1939. The statutory powers and duties of the Department are shown on page iii.

The Department is controlled by a Board of Governors, consisting of five members from various parts of the state. At the present time members of our board are from the legal profession, mine production, real estate and investment, mine management and consulting exploration group.

The Board of Governors outlines the policies and activities of the Department and employs the Director. The Director, by law must be an Arizona registered mining engineer. The present Director is registered in Colorado and Arizona, is a graduate of the University of Arizona with a B.S. in mining engineering and also has an honorary degree of mining engineer from the U. of A.

The Director employs such field and office staff as is consistent with its appropriation and the policies of the Board of Governors.

At this time there are three additional mining engineers on the staff, two registered in Arizona. One engineer has a masters degree in mining with the subject of his Thesis being "The Possible Effect of Tax Equalization on the Mining Industry of Arizona."

We have been using a consultant for statistical work. We are replacing this consultant with a "Mining Research Analyst" who will be a permanent full-time employee.

Since copper mining has had such outstanding performance and growth, it is perhaps possible the public has been lulled into a false sense of security about the mining industry's ability to achieve the miraculous - and that mining does not need fostering.

Mines cannot remain productive forever. The future does lie in the successful search for new mineral deposits.

One of the biggest changes affecting the Department of Mineral Resources has been the decrease in the actual number of "small miners" and the emergence of the large numbers of exploration companies. The individual prospector and small miner is still active and is sometimes still successful. He is often most important as a claim holder. Present day exploration, through necessity, concentrates on so called "hidden ore bodies". Some of the focal points for this exploration is district trends, abandoned prospect shafts and older drill hole interpretation. Mineralized areas or districts, now inactive, but having previous production, no matter how small, are now being re-evaluated by individuals and large and small exploration companies.

However, most exploration work today is a joint effort of a team of

engineers and geologists, using very sophisticated equipment and techniques completely unknown when the Department of Mineral Resources was first organized.

Government control is increasing and this control applies to the mineral deposits as well as to operations of the companies.

It is the Department's responsibility to maintain a continuing invitation to the private section to explore and develop minerals. We partly fulfill this responsibility by close cooperation with more than 60 individual exploration companies operating in the State (as apart from mining companies) and with the hundreds of "small miners" and prospectors still working.

The Director and Field Engineers participated in many meetings and conferences in addition to those shown on the field activity report. In some instances, the Department was responsible for a program. A list follows of the sponsoring association for the meetings. American Institute of Mining and Metallurgical Engineers - Arizona Small Mine Operators Association - Southwest Mineral Exploration Association - Cabeza Prieta Proposed Withdrawal hearing (testified) - Arizona Administrators Association - American Mining Congress - Western Governors Mining Advisory Council - Center for Environmental Studies - International Association of Assessing Officers - Governors Advisory Committee on Environment - Asarco Acid Plant Dedication - National Western Mining Conference - Roadless Area Potential Withdrawal - Department of Interior - Arizona Resources Information Center - Pacific Southwest Mineral Industry Conference - Interagency Coordinating Committee - Advisory Committee to JLBC Financial Economist - Rotary and Kiwanis meetings.

In addition, a mining program was provided for a High School.

The Director worked on a committee to get the Pacific Southwest Minerals Industry Conference to hold its annual meeting in Phoenix in 1973. Approximately 1,000 will be expected.

Extensive work with Eagle-Picher in Oklahoma resulted in a large number of excellent engineering and geological reports being added to our files on Arizona prospects and old mines. Similar work with Shattuck-Denn and personal contact with several individuals resulted in many additional files, also.

Several senators, members of the Attorney General's staff, State Land Department, Department of Economic Planning and Development, State Mine Inspector, Bureau of Land Management, Property Valuation Department, U. S. Forest Service, Answer Line, and Tucson and Phoenix newspaper reporters all used our services during the year.

A detailed feasibility study of a proposed chemical refinery was made for the Governor's office in answer to a Four Corners Regional Commission request.

A detailed analysis of the decline of lead-zinc production was made to fulfill a special request.

A large amount of activity relating to platinum took place. This resulted in the most part, in a large number of erroneous assays from a local firm and the results were used for nefarious purposes. Many honest people were taken by this and we did much work to stop this type of activity.

The Department has a great deal of data on Arizona mining properties. We have approximately 3,400 property files. Some files are quite complete and voluminous and some are rather scanty. Our index cards with mining information and references are estimated at over 15,000. There probably is much additional data we do not have available at the Arizona Bureau of Mines, State Library and Archives, Historical Museum and perhaps some city libraries.

It is a long range project of the Department to get all information on an index card file and cross referenced, with ultimately all being on microfilm and available from various offices.

The Department makes numerous studies on uses, marketing and other data on various minerals. Many of these studies are for specific requests and as a result are not put in report form. However, the Department is responsible for a number of publications. A list of these publications is attached.

The Department recognizes that the extraction of minerals by underground methods, open pit mines or strip mining is an activity that must become an active part of "Land Use Planning". We believe that initial responsibility for this planning should rest with the State. Our concentration of expertise of the mineral industry, including good understanding of the environmental problems created by the industry make it mandatory that the Department of Mineral Resources move into the development and administration of a mined area restoration and reclamation policy for the State. This must become an integral part of an overall land use planning policy.

Our field engineers spend considerable time out in the field keeping in contact with large and small operating companies, exploration groups and prospectors and prospects. Our goal is to provide the State with the ability to contribute to the improvement of all mining operations from all points of view including the government, conservationist, environmentalist, mining industry, the general public and all other specialized groups.

STATISTICAL OPERATING DATA

Office Visitors:

Phoenix	1,949
Tucson	229

Information contacts received:

Phoenix	4,704
Tucson	593

Letters answered	1,826
------------------	-------

Publications printed	14
----------------------	----

Publications distributed	11,058
--------------------------	--------

Field Activities:

Arizona Small Mine Operators	
Meetings	88
Other meetings	77
Mine Plant Visits	394
Field Interviews	379
Miles traveled	46,632

STATEMENT OF EXPENDITURES

APPROPRIATION - Fiscal 1971-1972 \$ 128,971.00

EXPENDITURES

Personal Services	\$ 90,356.10
Employee Related Expenditures	8,849.42
Professional Services	5,000.00
Travel - State	6,960.61
Travel - Out of State	872.89
Other Operating Expenditures:	
Utilities	1,586.82
Telephone	1,766.18
Postage	1,070.60
Office Supplies	1,737.31
Janitor Supplies	130.11
Maintenance & Supplies	1,376.04
Insurance	70.00
Subs & Dues	246.75
Books & Pubs	391.75
Other Supplies	12.17
Printing	911.04
Capital Outlay	<u>393.28</u>

TOTAL EXPENDITURES 121,731.07

Balance - returned to General Fund 7,239.93

\$ 128,971.00