

HEINRICHS EXPLORATION COMPANY  
 INDUCED POLARIZATION SECTIONAL DATA SHEET  
 for  
 INSPIRATION CONSOLIDATED COPPER COMPANY

Separation  
or Depth Point

Apparent Resistivity (ohm feet)  
 Superscript numbers indicate Percent Frequency Effect

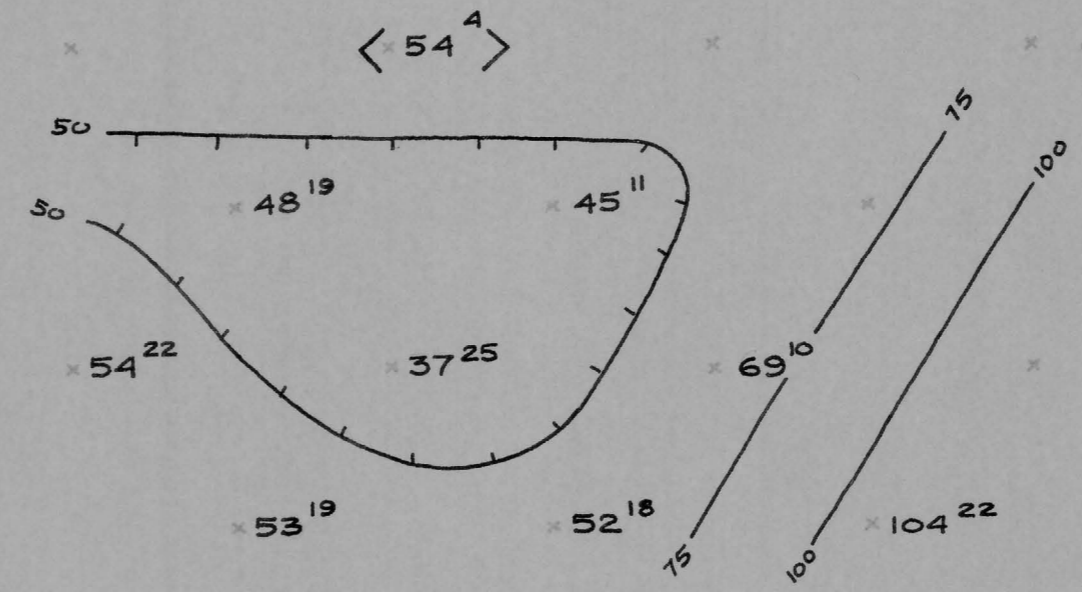
Electrode No.  
 Station No.

4300' W of Coordinate 20,000 E  
 3800' S of Coordinate 8,000 N

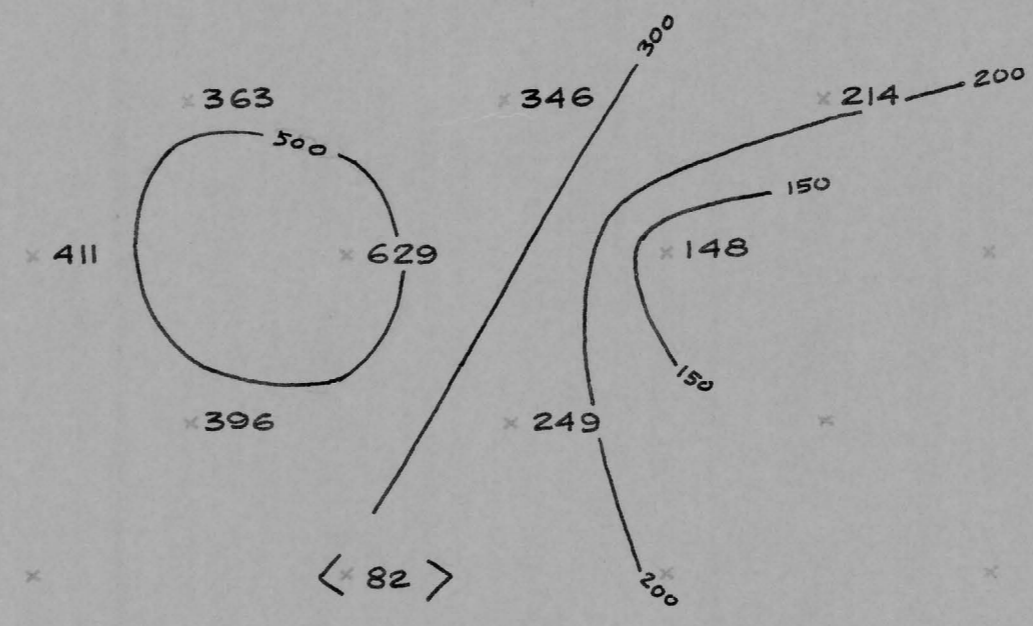
Metallic Conduction Factor  
 (Apparent)

AREA: CHRISTMAS MINE      LINE No: 2 Looking westerly      SPREAD No: 1 - Partial Spread 1      SCALE: 1" = 600' (1000' dipole setup)      DATE: JULY 1962

N 1/2 bearing N 10° E  
 S 1/2 bearing S 6° W



P<sub>DC</sub> / 2T PFE



MCF

4780-1078