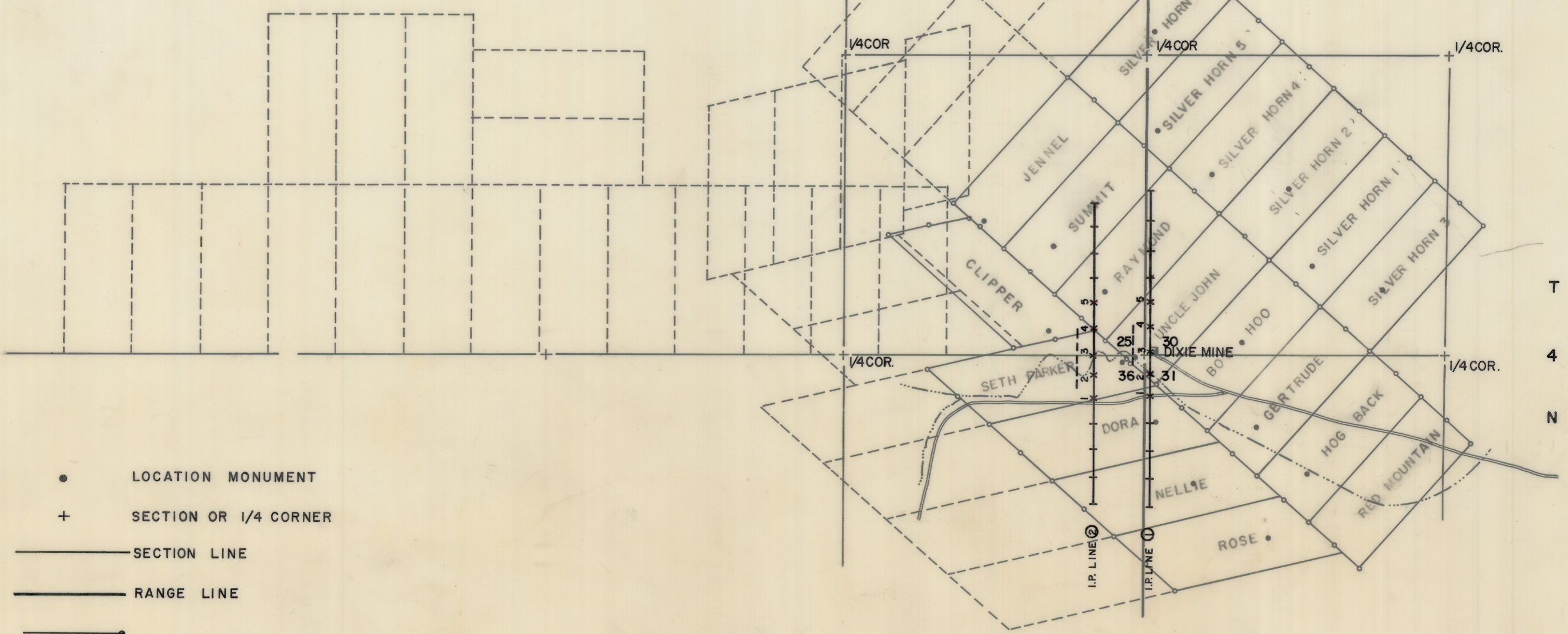


R 5 E R 6 E

T  
4  
N

T  
4  
N



- LOCATION MONUMENT
- + SECTION OR 1/4 CORNER
- SECTION LINE
- RANGE LINE

FROM 1" = 300' PLAN

CLAIM BOUNDARY

FROM SKETCH MAP (NO SCALE)

R 5 E R 6 E

JOB NO. B306-68

NOTE: ALL INFORMATION ON THIS MAP TAKEN FROM  
MAPS FURNISHED BY MYORA MINING CORP.

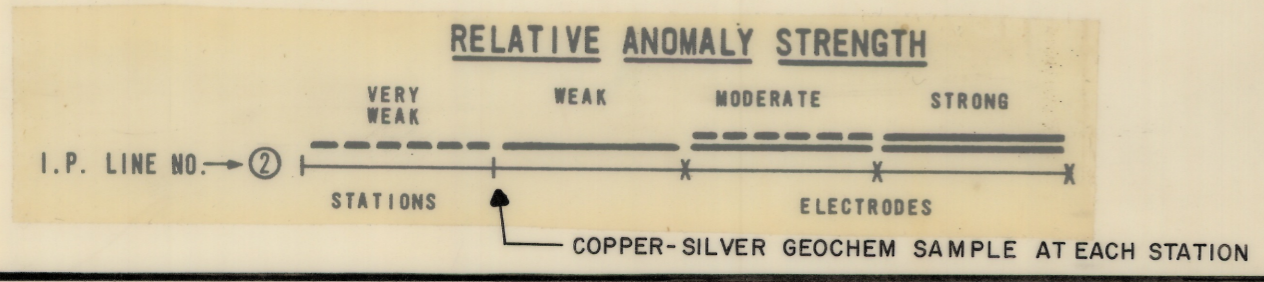


NOTE: CLAIM LOCATIONS & BOUNDARIES FURNISHED BY NORTH AMERICAN MINES INC. AND MYORA MINING CORP. & NOT INDEPENDENTLY VERIFIED BY GEOEX.  
LOCATION OF GEOPHYSICS DONE BY COMPASS & CHAIN METHODS & TIED HORIZONTALLY TO SECTION CORNER.

**HEINRICHS GEOEXPLORATION COMPANY**  
 POST OFFICE BOX 5671, TUCSON, ARIZONA, 85703  
 Phone: 602/623-0578 Cable: GEOEX, Tucson  
 geophysical engineers vancouver sydney

COMPOSITE CLAIM MAP  
DIXIE MINE AREA  
MARICOPA COUNTY, ARIZONA

FOR  
**NORTH AMERICAN MINES, INC.**



SCALE 1" = 1000' | DRAWN BY H.R.M. | DATE JAN. 1969