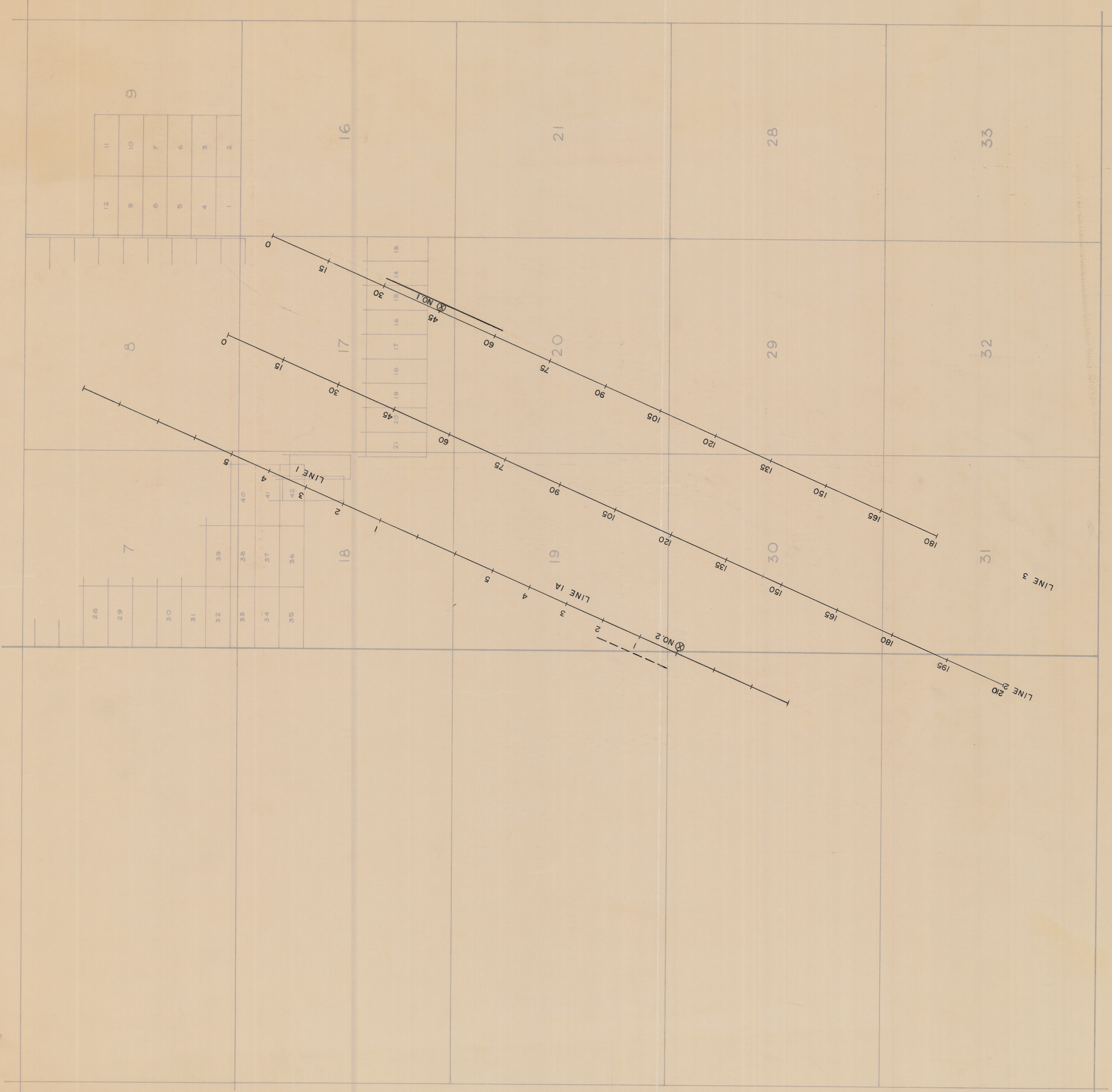
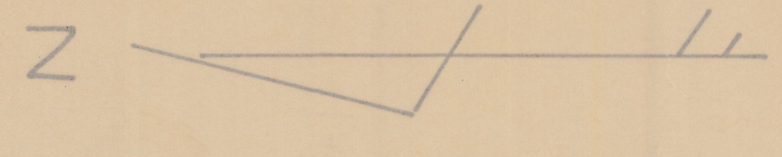


R 9 E

R 10 E

T 7 S



12	11
9	10
8	7
5	6
4	3
1	2

21	20	19	18	17	16	15	14	13	12
45	45	45	45	45	45	45	45	45	45

26	29	30	31	32	33	34	35	36	37	38	39	40	41	42

INDICATES INDUCED POLARIZATION SURVEY LOCATION  
 INDICATES WEAK ANOMALISM  
 " MODERATE " PROPOSED D.D.H.

HEINRICHS GEOEXPLORATION COMPANY  
 P.O. Box 3471  
 Tucson, Arizona

INDUCED POLARIZATION SURVEY LOCATION  
 NORTH STAR MINE AREA  
 FOR  
 THE MAGMA COPPER CO.  
 PINAL COUNTY ARIZ.

SCALE	1" = 1000'	CONTOUR INTERVAL	REVISIONS
DATE	9 - 64	DRAWN BY	FB & J.P.M.
		SHEET	OF
		DRAWING NO.	FILE

100-400-00-005 11/23/88