

ELECTRODE STATIONS SURFACE 30W 25 20 15 10 5 2 3 4 5 10 15 20 25 30E SURFACE

SPREAD 1

0 INTERVAL BETWEEN SENDER & RECEIVER DIPOLES

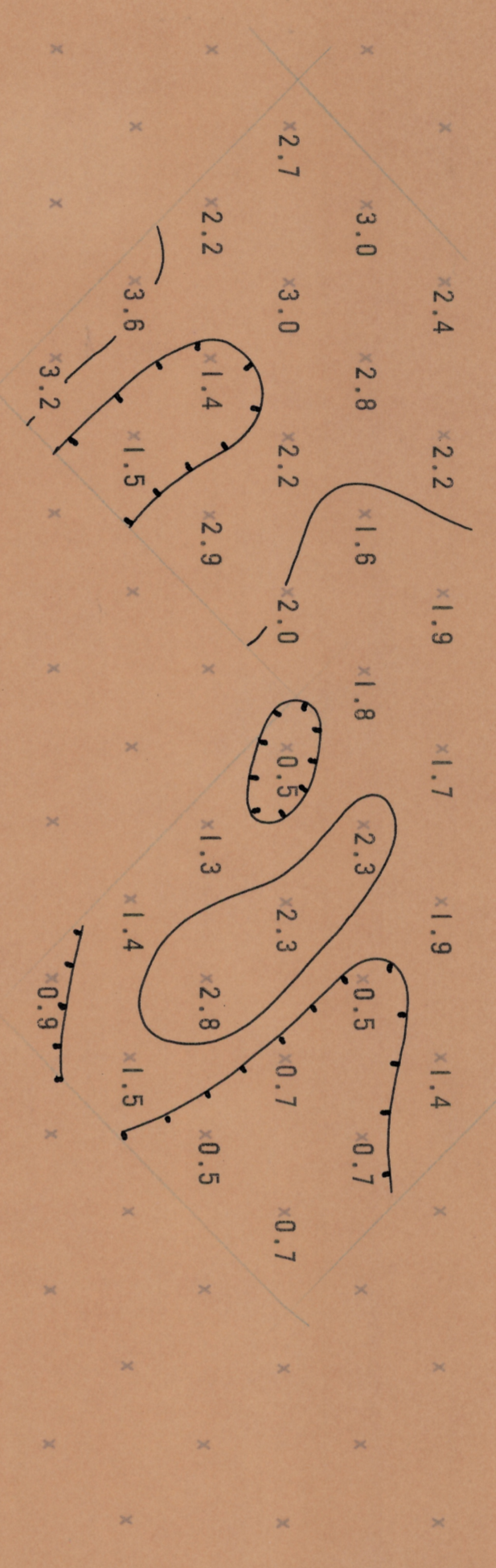


APPARENT RESISTIVITY ( $\rho_{DC}$ ) IN UNITS OF OHM FEET

CONTOUR INTERVAL LOGARITHMIC

SENDER FREQUENCY: 0.05 cps.

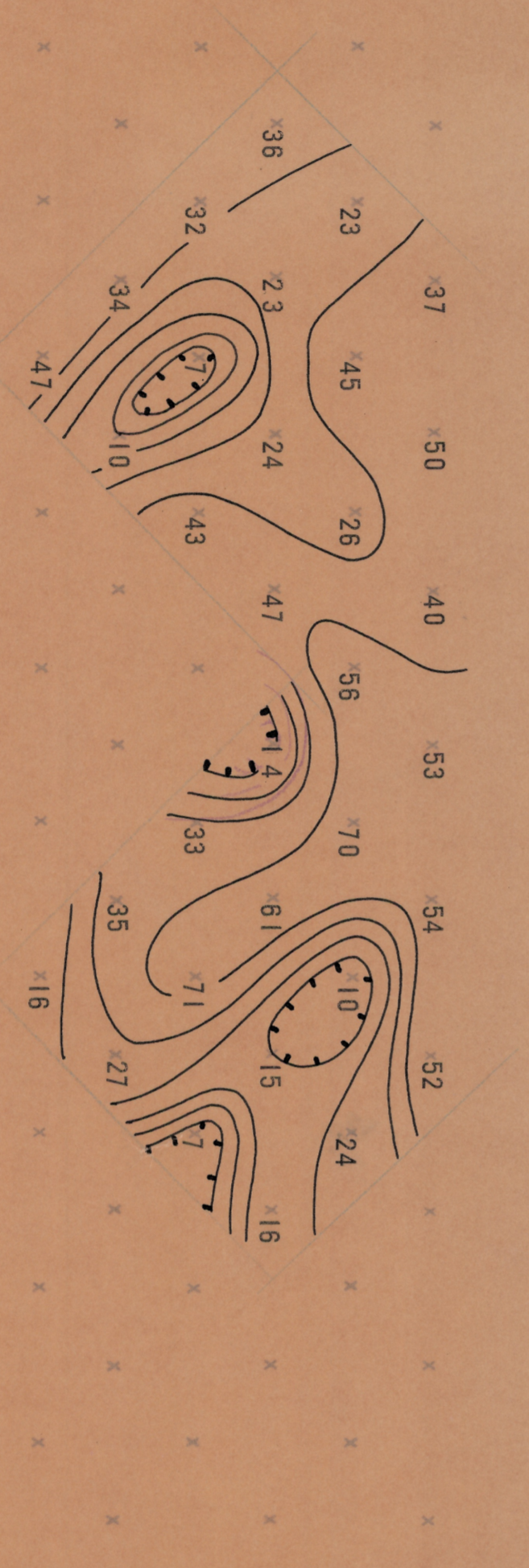
SURFACE SURFACE



PERCENT FREQUENCY EFFECT (PFE) CONTOUR INTERVAL CONSTANT

SENDER FREQUENCIES: 0.05 & 3.0 cps

SURFACE SURFACE



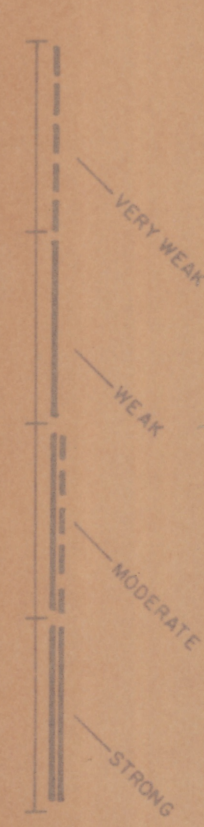
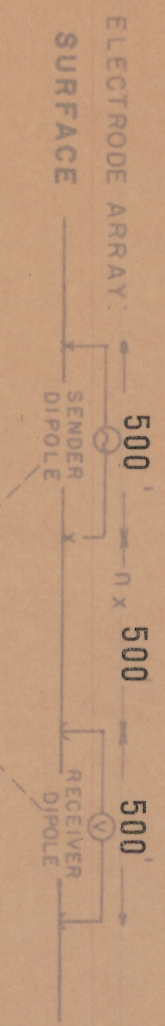
APPARENT "METALLIC CONDUCTION" FACTOR (MCF)

(MCF =  $\frac{PFE \times 1000}{\rho_{DC} \times L}$ )

CONTOUR INTERVAL LOGARITHMIC

SELF POTENTIAL

EXPLANATION



LOOKING N 10° W

SECTIONAL DATA SHEET

LINE NO. 6-2 (SPREAD 1)

INDUCED POLARIZATION TRAVERSE

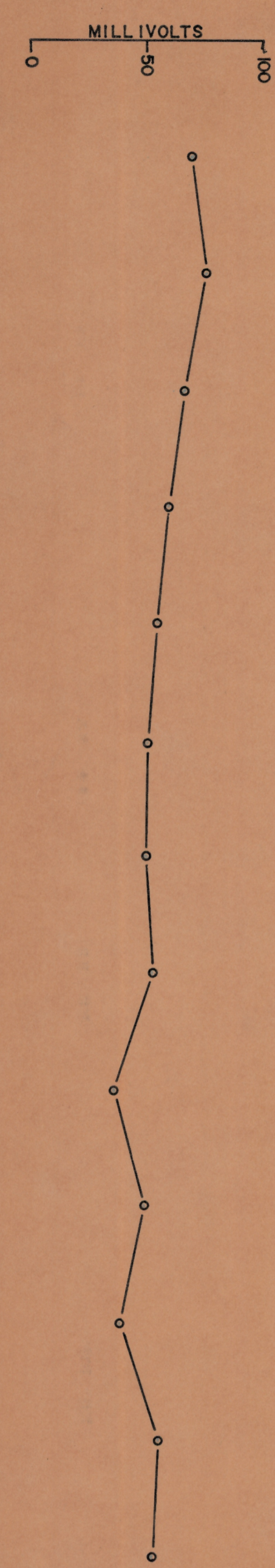
CARMEN AREA

HEINRICHS GEOEXPLORATION COMPANY

SCALE: 1" = 500'

DATE: JULY 1968

FOR GEOCHEMICAL SURVEYS



9961-850-20-105 HHP 88 Jsmm