

R 21 W

R 20 W

T 24 N

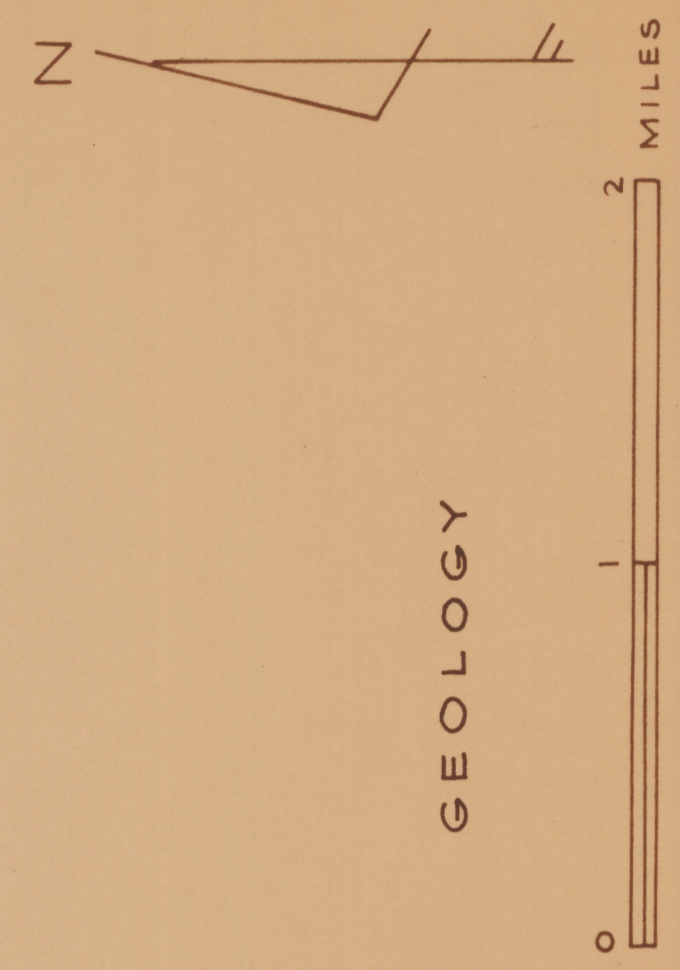
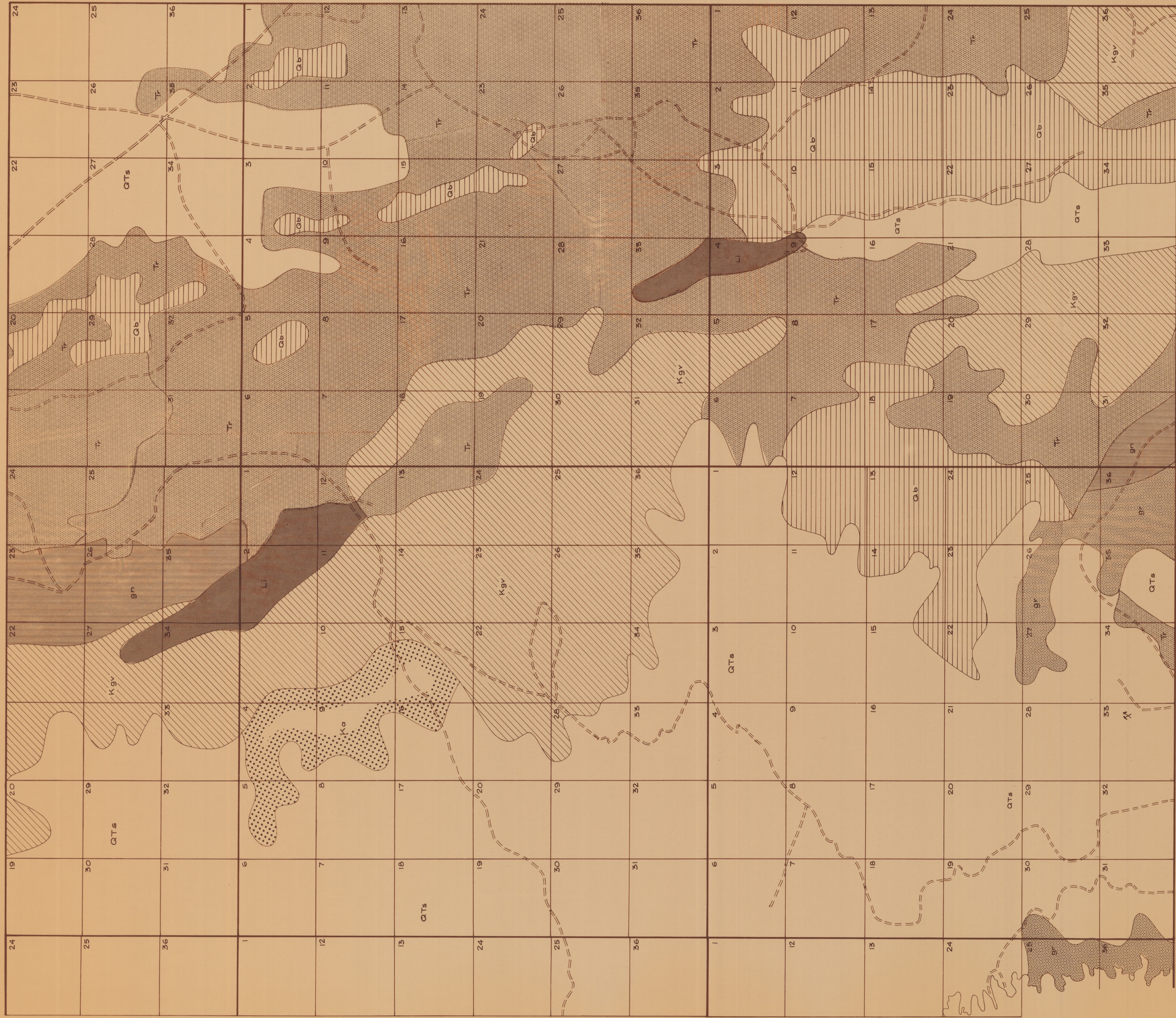
T 24 N

T 23 N

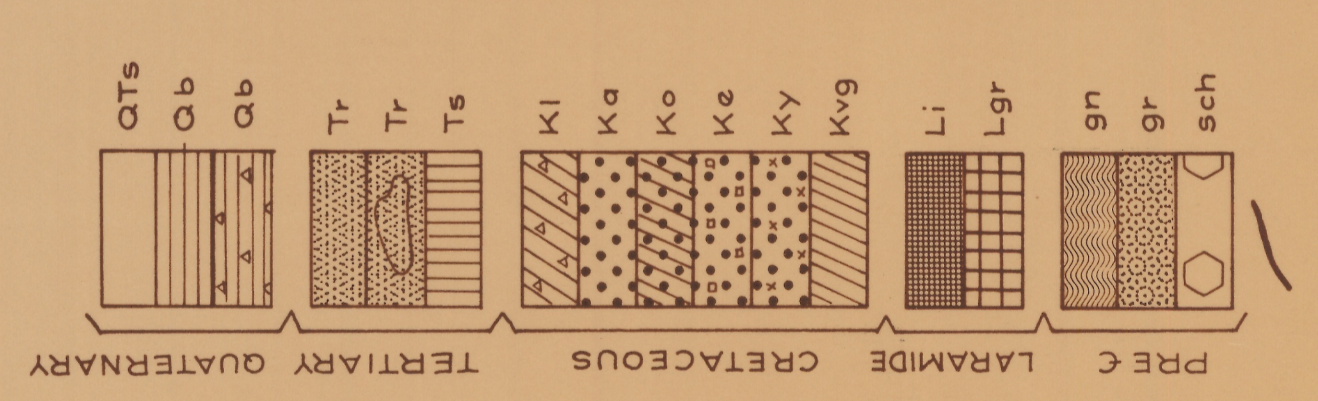
T 23 N

T 22 N

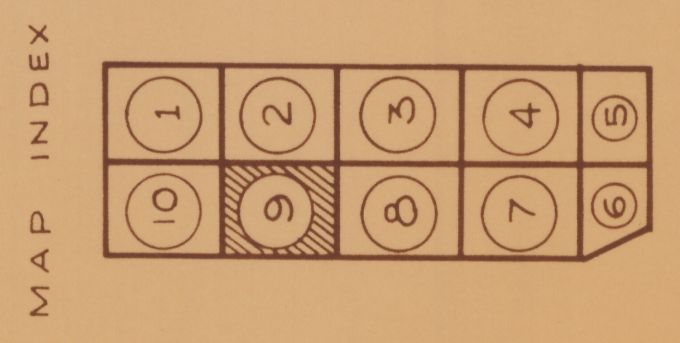
T 22 N



GEOLOGY



ALLUVIUM  
 BASALT, OLIVINE BASALT  
 ss (ARKOSE SANDSTONE)  
 WARM SPRING ANDESITE  
 RHYOLITE FLOWS  
 INTRUSIVE RHYOLITE  
 SITGREAVES TUFF  
 GOLDROAD LATITE  
 ANDESITE  
 OATMAN ANDESITE  
 ESPERANZA TRACHITE  
 ALCYONE TRACHITE  
 GOLD ROAD VOLCANICS  
 DIKES & PLUGS  
 GRANITE & RELATED CRYSTALLINE ROCKS  
 PRE C. GNEISS & SCHIST  
 GRANITE & RELATED INTRUSIVE ROCKS  
 SCHIST  
 VEIN OR FAULT



COMPILED FROM INFORMATION SUPPLIED BY:  
 ARIZONA & CALIFORNIA STATE GEOLOGY  
 U.S. BUREAU OF LAND MANAGEMENT  
 DOERINGSFELD, AMUEDO & IVEY  
 U.S. GEOLOGICAL SURVEY  
 ARIZONA GEOLOGISTS  
 GEO EX

HEINRICHS GEOEXPLORATION COMPANY  
 Tucson, Arizona  
 P.O. Box 5671  
 MINING EVALUATION PROJECT  
 FOR  
 ARKLA EXPLORATION CO  
 MOHAVE COUNTY, ARIZONA

SCALE: 2" = 1 mile	CONTOUR INTERVAL:	REVISIONS
DATE: Feb. 1965	DATA BY:	
DRAWN BY:	SHEET 9 OF 10	
	DRAWING NO.:	FILE: