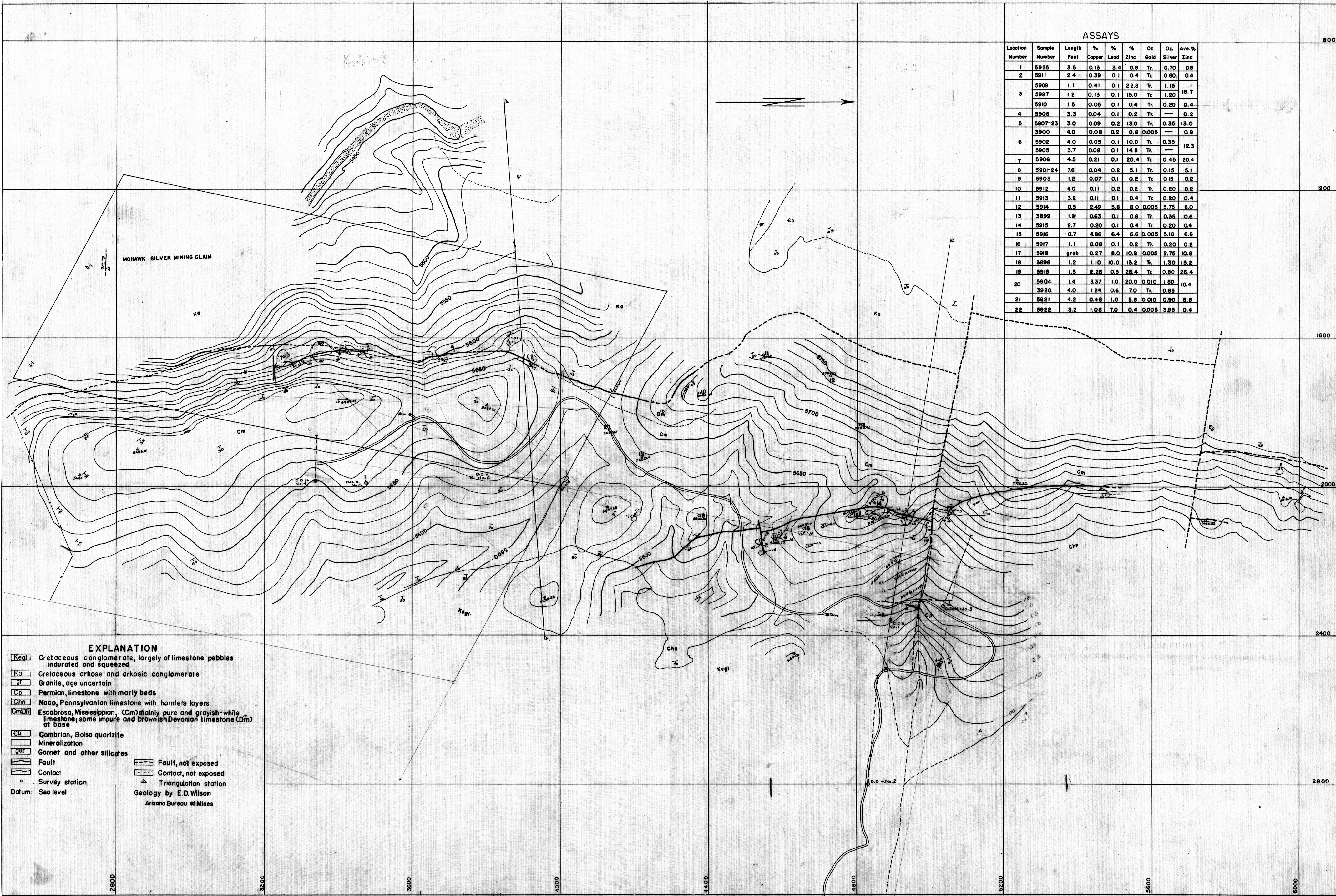


ASSAYS

Location Number	Sample Number	Length Feet	% Copper	% Lead	% Zinc	Oz. Gold	Oz. Silver	Ave. % Zinc
1	5925	3.5	0.13	3.4	0.8	Tr.	0.70	0.8
2	5911	2.4	0.39	0.1	0.4	Tr.	0.60	0.4
3	5909	1.1	0.41	0.1	22.8	Tr.	1.15	18.7
	5997	1.2	0.13	0.1	15.0	Tr.	1.20	
	5910	1.5	0.05	0.1	0.4	Tr.	0.20	
4	5908	3.3	0.04	0.1	0.2	Tr.	—	0.2
5	5907-23	3.0	0.09	0.2	13.0	Tr.	0.35	13.0
	3900	4.0	0.08	0.2	0.8	0.005	—	
6	5902	4.0	0.05	0.1	10.0	Tr.	0.35	12.3
	5905	3.7	0.08	0.1	14.8	Tr.	—	
7	5906	4.5	0.21	0.1	20.4	Tr.	0.45	20.4
8	5901-24	7.6	0.04	0.2	5.1	Tr.	0.15	5.1
9	5903	1.2	0.07	0.1	0.2	Tr.	0.15	0.2
10	5912	4.0	0.11	0.2	0.2	Tr.	0.20	0.2
11	5913	3.2	0.11	0.1	0.4	Tr.	0.20	0.4
12	5914	0.5	2.49	5.8	8.0	0.005	5.75	8.0
13	3899	1.9	0.63	0.1	0.6	Tr.	0.35	0.6
14	5915	2.7	0.20	0.1	0.4	Tr.	0.20	0.4
15	5916	0.7	4.86	6.4	6.6	0.005	5.10	6.6
16	5917	1.1	0.08	0.1	0.2	Tr.	0.20	0.2
17	5918	grab	0.27	8.0	10.8	0.005	2.75	10.8
18	3896	1.2	1.10	10.0	13.2	Tr.	1.30	13.2
19	5919	1.3	2.26	0.5	26.4	Tr.	0.80	26.4
20	5904	1.4	3.37	1.0	20.0	0.010	1.80	10.4
	5920	4.0	1.24	0.6	7.0	Tr.	0.65	
21	5921	4.2	0.48	1.0	5.8	0.010	0.90	5.8
22	5922	3.2	1.08	7.0	0.4	0.005	3.95	0.4



EXPLANATION

- Keg1** Cretaceous conglomerate, largely of limestone pebbles indurated and squeezed
- Ka** Cretaceous arkose and arkosic conglomerate
- gr** Granite, age uncertain
- Cp** Permian, limestone with marly beds
- Chn** Naco, Pennsylvanian limestone with hornfels layers
- Cm** Escabrosa, Mississippian, (Cm) mainly pure and grayish-white limestone; some impure and brownish Devonian limestone (Dm) of base
- Cb** Cambrian, Bolsa quartzite
- Mineralization** Mineralization
- Garnet and other silicates** Garnet and other silicates
- Fault** Fault
- Contact** Contact
- Survey station** Survey station
- Datum: Sea level**
- Fault, not exposed** Fault, not exposed
- Contact, not exposed** Contact, not exposed
- Triangulation station** Triangulation station

Geology by E.D. Wilson
Arizona Bureau of Mines

GEOLOGIC MAP OF MOHAWK-SILVER ZINC DEPOSIT, PIMA COUNTY
SCALE 1"=100'