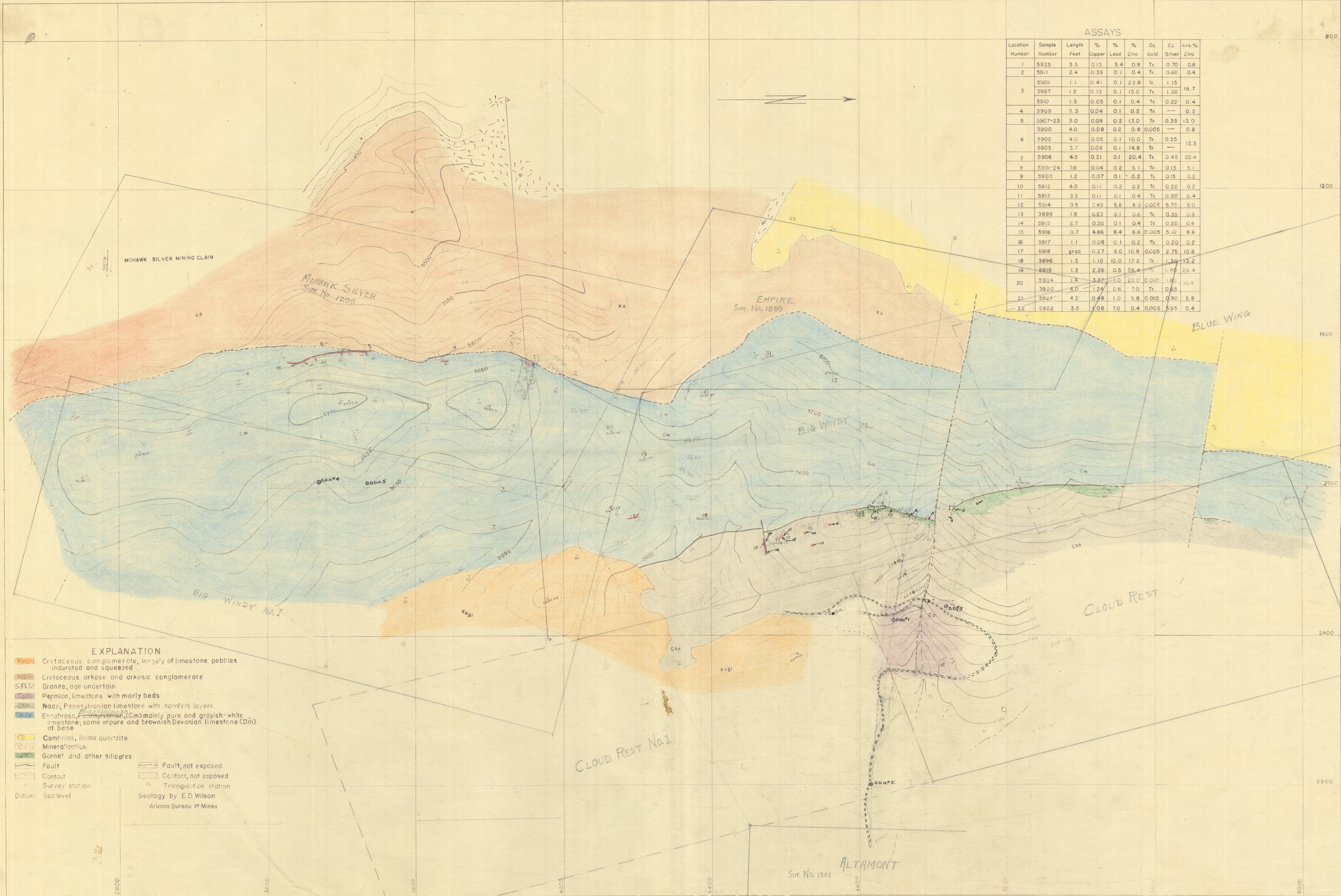


ASSAYS

Location Number	Sample Number	Length Feet	% Copper	% Lead	% Zinc	Oz. Gold	Oz. Silver	Ave. % Zinc
1	5925	3.5	0.13	3.4	0.8	Tr.	0.70	0.8
2	5911	2.4	0.39	0.1	0.4	Tr.	0.60	0.4
3	5909	1.1	0.41	0.1	2.8	Tr.	1.15	18.7
	5997	1.2	0.13	0.1	15.0	Tr.	1.20	
4	5910	1.5	0.05	0.1	0.4	Tr.	0.20	0.4
	5908	3.3	0.04	0.1	0.2	Tr.	—	
5	5907-23	3.0	0.09	0.2	13.0	Tr.	0.35	13.0
	3900	4.0	0.08	0.2	0.8	0.005	—	
6	5902	4.0	0.05	0.1	10.0	Tr.	0.35	12.3
	5905	3.7	0.08	0.1	14.8	Tr.	—	
7	5906	4.5	0.21	0.1	20.4	Tr.	0.45	20.4
8	5901-24	7.6	0.04	0.2	5.1	Tr.	0.15	5.1
9	5903	1.2	0.07	0.1	0.2	Tr.	0.15	0.2
10	5912	4.0	0.11	0.2	0.2	Tr.	0.20	0.2
11	5913	3.2	0.11	0.1	0.4	Tr.	0.20	0.4
12	5914	0.5	2.49	5.8	8.0	0.005	5.75	8.0
13	3899	1.9	0.63	0.1	0.6	Tr.	0.35	0.6
14	5915	2.7	0.20	0.1	0.4	Tr.	0.20	0.4
15	5916	0.7	4.86	6.4	6.6	0.005	5.10	6.6
16	5917	1.1	0.08	0.1	0.2	Tr.	0.20	0.2
17	5918	grab	0.27	8.0	10.8	0.005	2.75	10.8
18	3896	1.2	1.10	10.0	13.2	Tr.	1.30	13.2
19	5919	1.3	2.26	0.5	26.4	Tr.	0.80	26.4
20	5904	1.4	3.37	1.0	20.0	0.010	1.50	10.4
	3920	4.0	1.24	0.6	7.0	Tr.	0.65	
21	5921	4.2	0.48	1.0	5.8	0.010	0.90	5.8
22	5922	3.2	1.08	7.0	0.4	0.005	8.95	0.4



EXPLANATION

- Cretaceous conglomerate, largely of limestone pebbles indurated and squeezed
 - Cretaceous arkose and arkosic conglomerate
 - Granite, age uncertain
 - Permian limestone with marly beds
 - Naco, Pennsylvanian limestone with hornfels layers
 - Escabrosa, Pennsylvanian (Cm) mainly pure and grayish-white limestone, some impure and brownish Devonian limestone (Cm) at base
 - Cambrian, Balsa quartzite
 - Mineralization
 - Garnet and other silicates
 - Fault, not exposed
 - Contact, not exposed
 - Survey station
 - Triangulation station
- Datum: Sea level
Geology by E.D. Wilson
Arizona Bureau of Mines

GEOLOGIC MAP OF MOHAWK-SILVER ZINC DEPOSIT, PIMA COUNTY
SCALE 1"=100'