

Sample No.	Width	% Oz./Ton		
		Mn	Au	Ag
217	70"	12.6	0.02	8.65
218	19	19.5	.02	5.50
219	12	22.4	Tr	2.20
220	9	14.7	0.02	2.40
221	22	5.2	.02	2.30

Sample No.	Width	% Oz./Ton		
		Mn	Au	Ag
216	58"	10.3	Tr	1.10
215	26	16.1	0.02	12.15
214	56	7.7	Tr	0.40
213	26	11.7	0.02	6.60
212	16	16.1	.02	4.10
211	46	12.4	.01	2.90
210	12	10.9	.01	2.40
209	20	14.9	.02	6.50
208	13	9.5	.02	3.10
207	30	14.4	.03	1.25
206	25	15.8	.01	1.65
205	36	14.5	.02	1.45
199	24	15.9	.01	2.35
200	24	12.7	.01	1.20
201	36	9.9	.02	1.35
202	25	9.8	.03	1.35
203	17	8.8	Tr	0.55
204	27	14.7	0.01	0.95

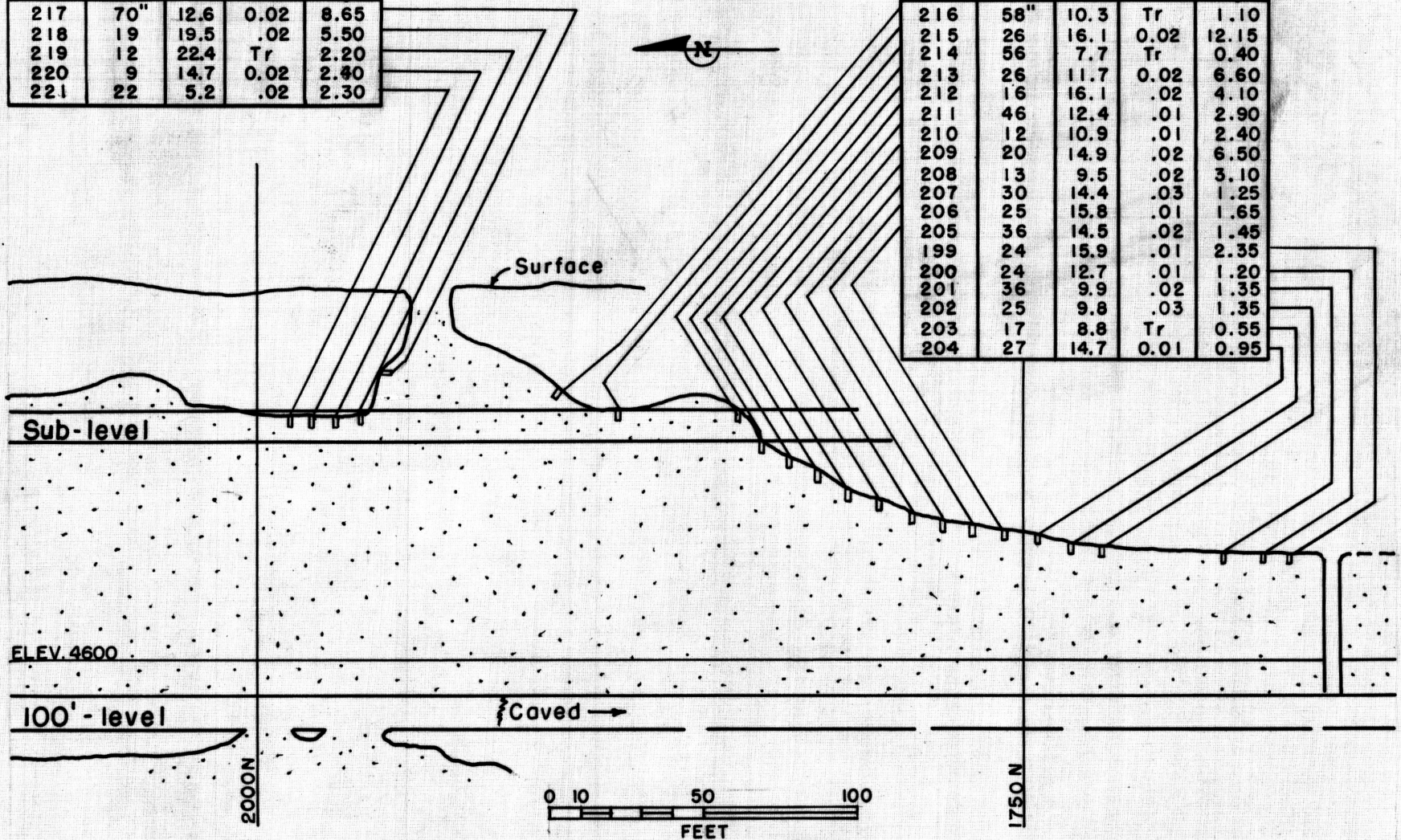


FIGURE 19. - SAMPLES BETWEEN COMET 100 LEVEL AND SURFACE