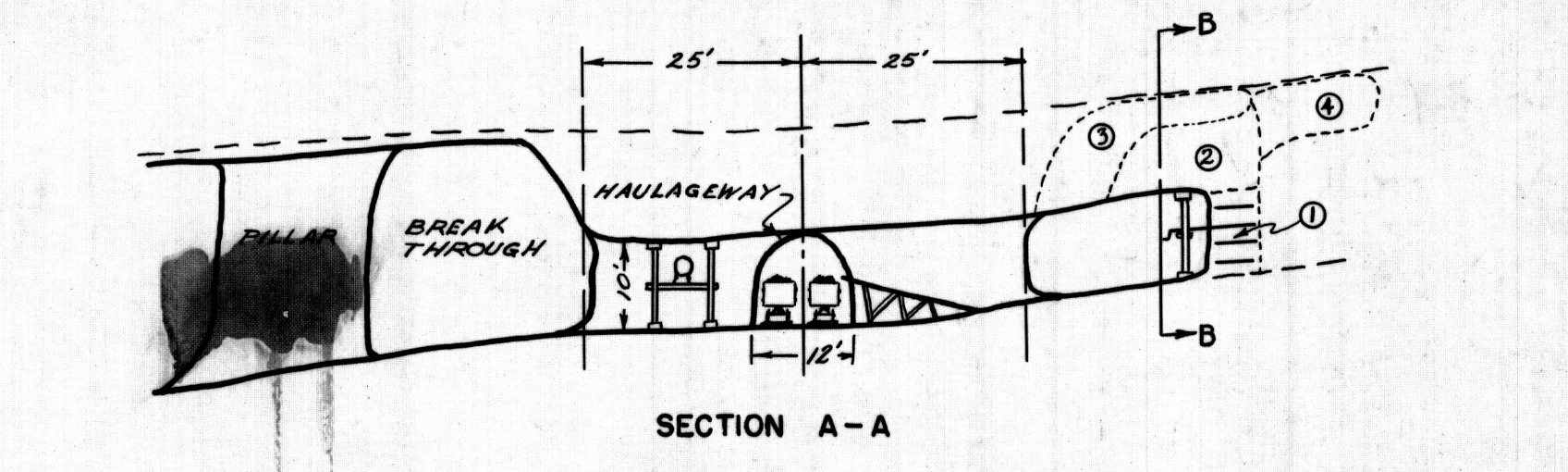


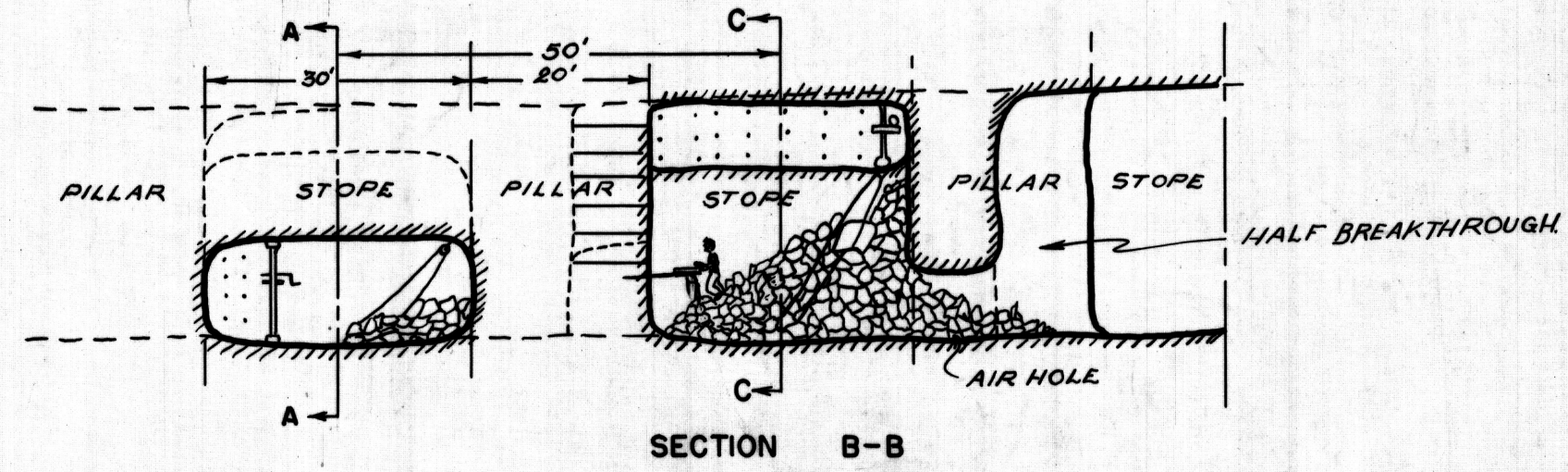
→ Direction of air  
 # Brattice  
 0 50 100 150  
 SCALE IN FEET

FIGURE 4. PLAN OF PROPOSED MINING METHOD

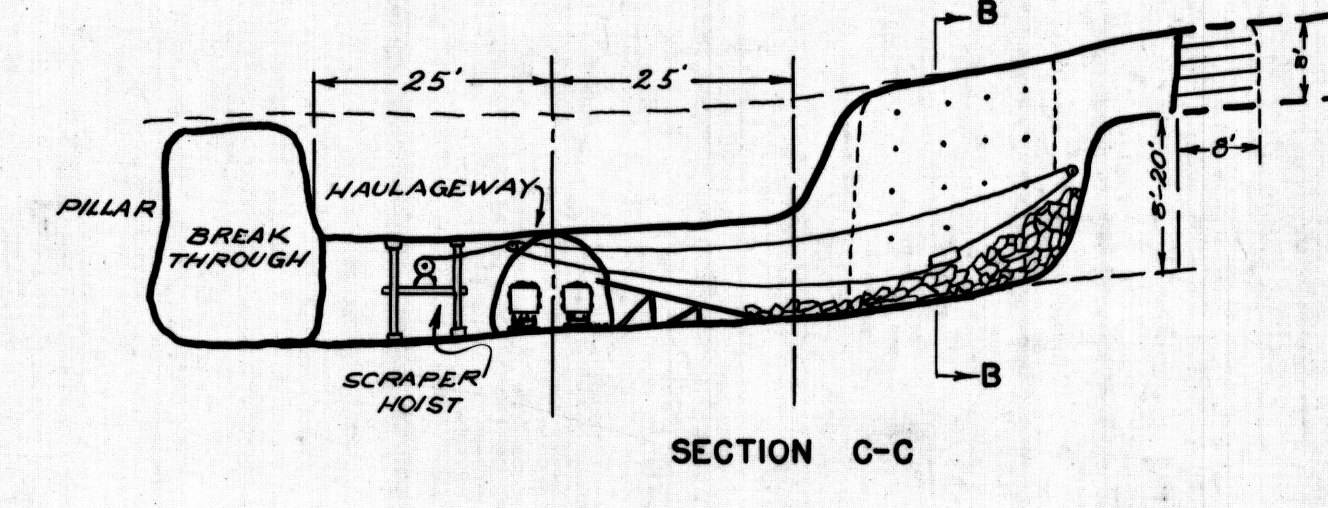
4 3/8 inches  
 To be strapped in on page 11  
 of manuscript



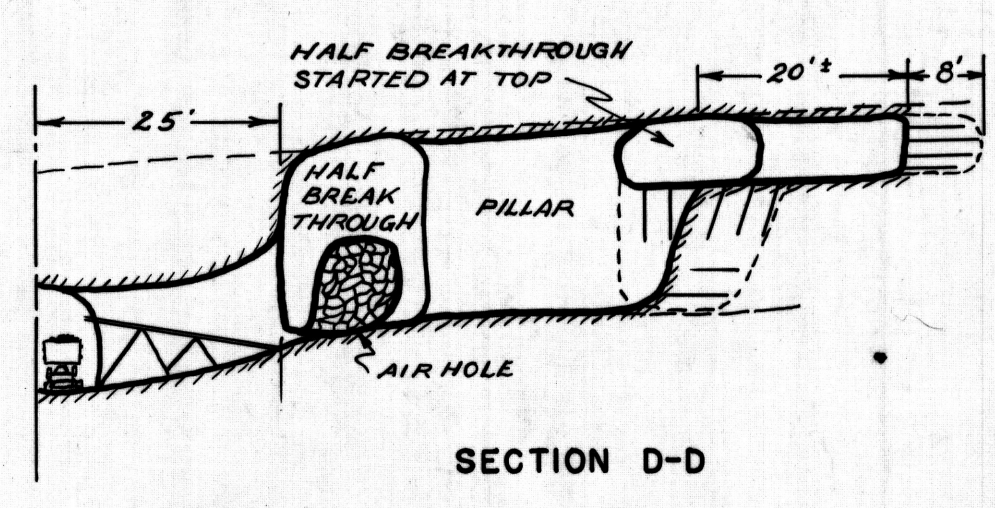
SECTION A-A



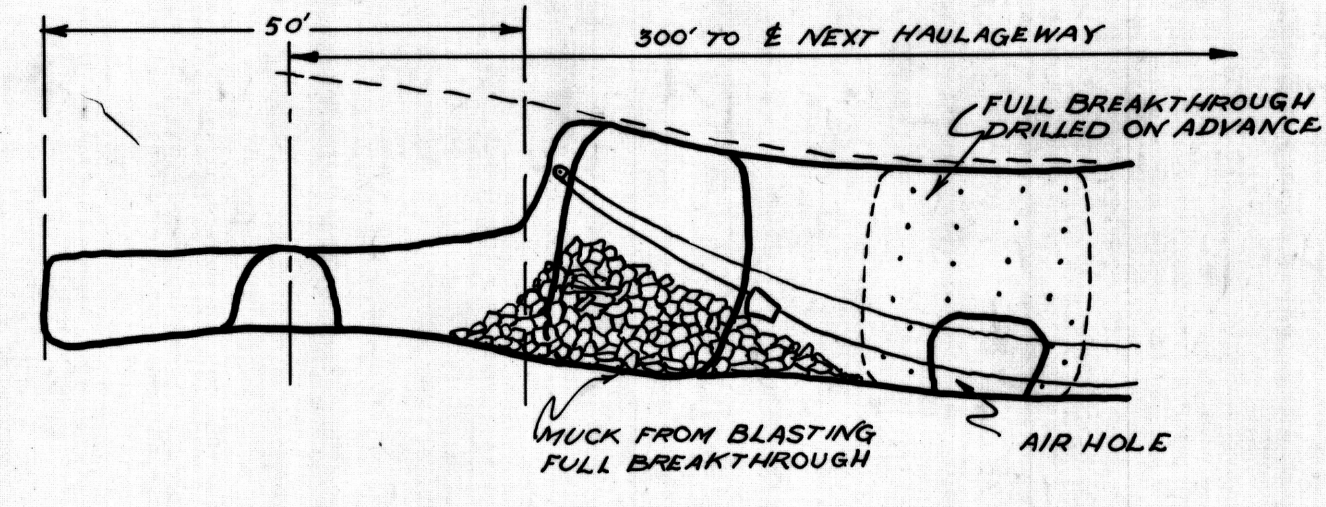
SECTION B-B



SECTION C-C



SECTION D-D



SECTION E-E

0 20 40 60  
 SCALE IN FEET

FIGURE 5. SECTIONS OF PROPOSED MINING METHOD

3 3/4 inches

FIG. 4.

U. S. DEPARTMENT OF THE INTERIOR  
 BUREAU OF MINES  
**PROPOSED MINING METHOD**  
 FOR  
 ARTILLERY PEAK MANGANESE  
 MOJAVE COUNTY, ARIZONA.  
 PROJECT 303 SCALE - AS INDICATED.

DRAWN BY <i>W. H. Johnson</i>	ENGINEER <i>C. H. Johnson</i>
CHECKED BY	DATE <i>Dec. 1941</i>
APPROVED BY	REVISED
	MAP NO.

W. O. NO.