

ARTILLERY PEAK

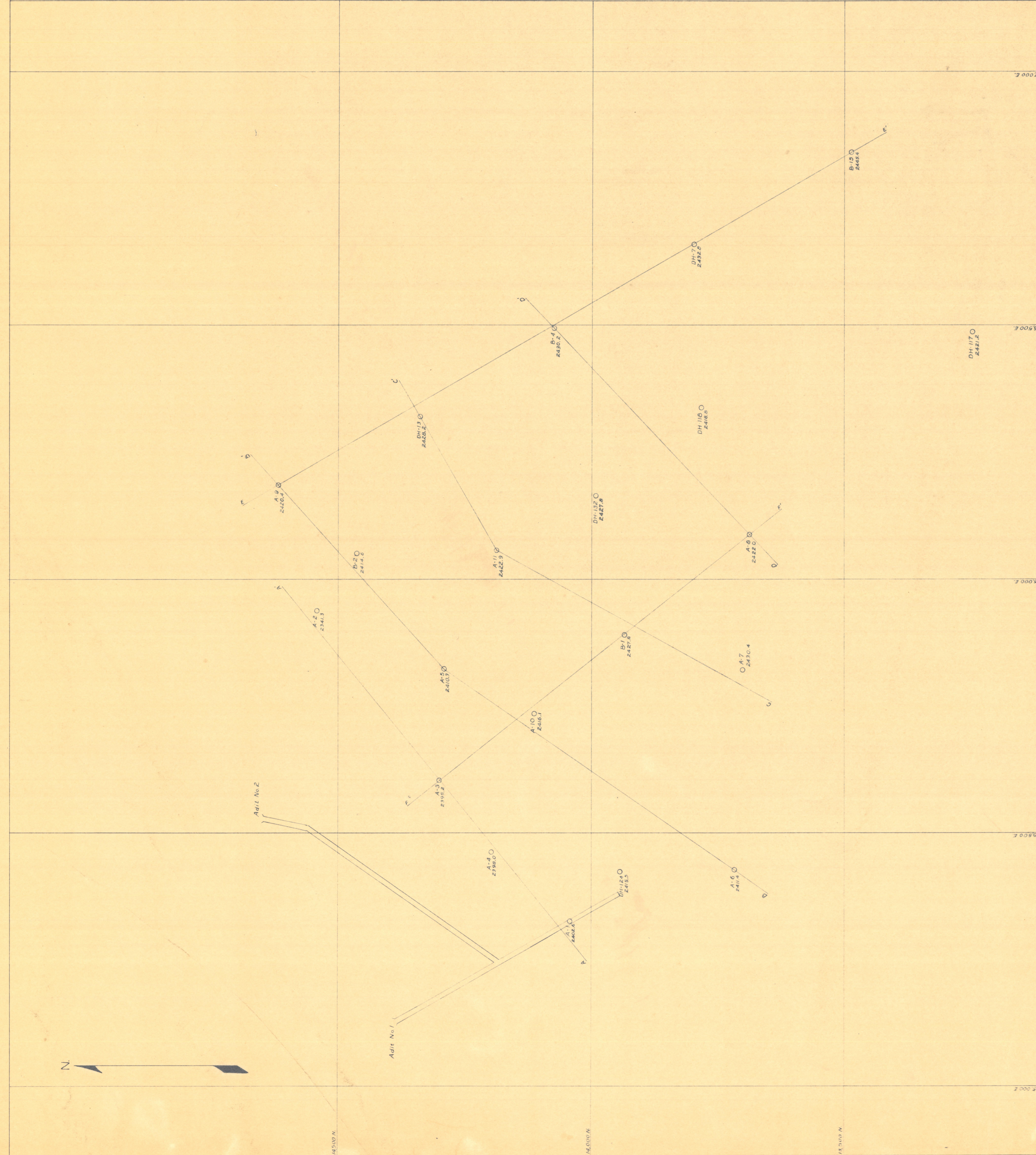
EXPLANATION

MAP

Scale: 1"=100'
 O.B.M. U.S.M. drill hole, A group, with color elevation.
 O.B.M. U.S.M. drill hole, B group, with color elevation.
 O.B.M. U.S.M. drill hole, C group, with color elevation.
 Map grid is that of U.S.M.M.

SECTIONS

Horizontal and vertical scales: 1"=50'
 Conglomerate and Flyschlike
 Sandstone and shale
 Siltstone
 Clay, mudstone, or shale
 Limestone
 Fault with slip
 Dissected zone
 No core
 75' to 150' distance of station from 200' to 300' M.



EXPLANATION

