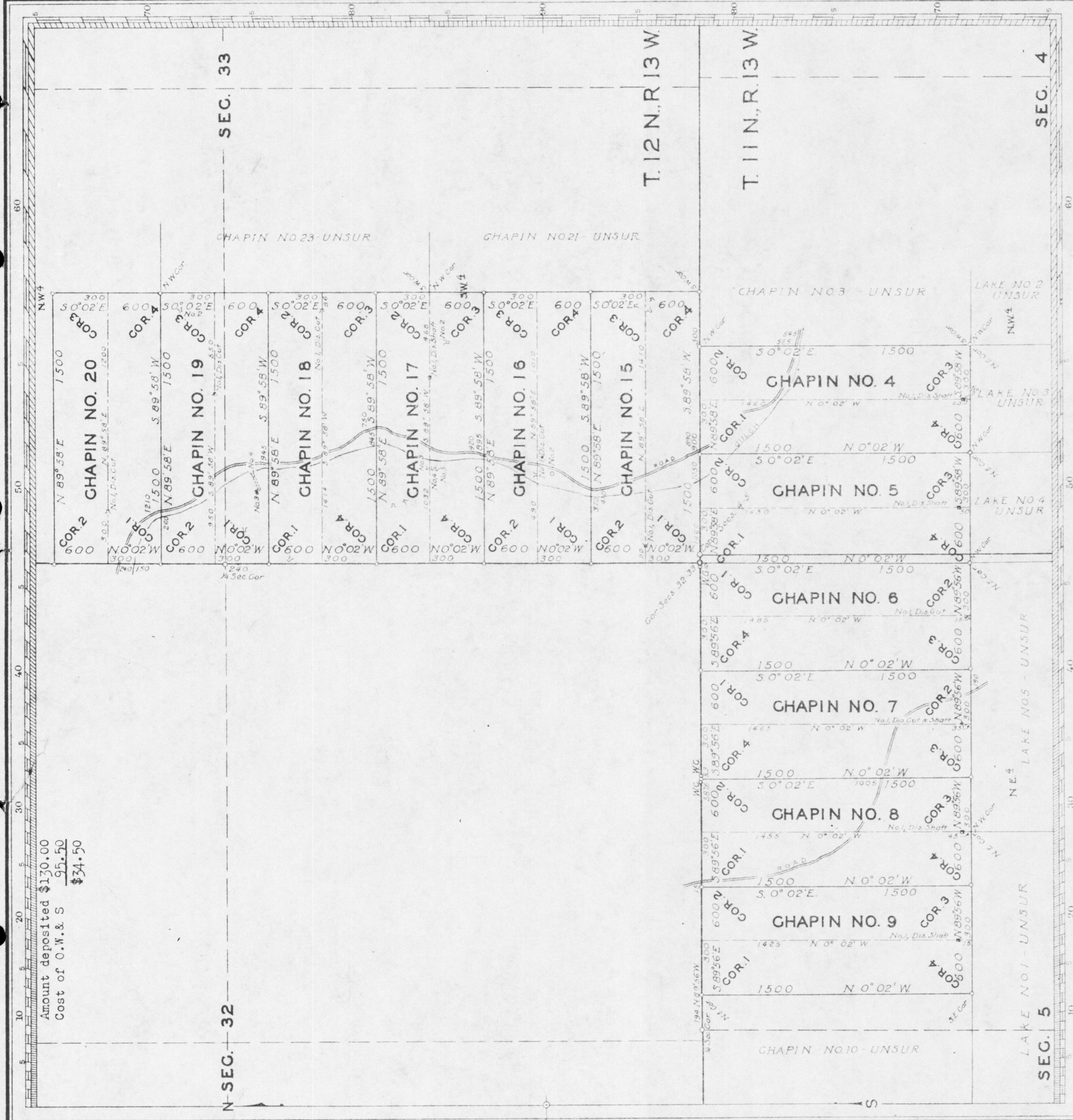


(4-675)



Mineral Survey No. 4209 (2 Sheets)
 ARIZONA Land District
PLAT
 OF THE CLAIM OF
 CHAPIN EXPLORATION COMPANY
 KNOWN AS THE

CHAPIN NO. 4, CHAPIN NO. 5, CHAPIN NO. 6,
 CHAPIN NO. 7, CHAPIN NO. 8, CHAPIN NO. 9,
 CHAPIN NO. 10, CHAPIN NO. 11, CHAPIN NO. 12,
 CHAPIN NO. 13, CHAPIN NO. 14, CHAPIN NO. 15,
 CHAPIN NO. 16, CHAPIN NO. 17, CHAPIN NO. 18,
 CHAPIN NO. 19, CHAPIN NO. 20

Locals

OWENS MINING DISTRICT,
 COCHISE COUNTY, ARIZONA
 Acres.
 Containing an Area of 500
 Foot to the inch.
 Variation 15° 20' E.
 BY
 SURVEYED February 6 - 13 1938
 RALPH L. MOTZ
 Mineral Surveyor.

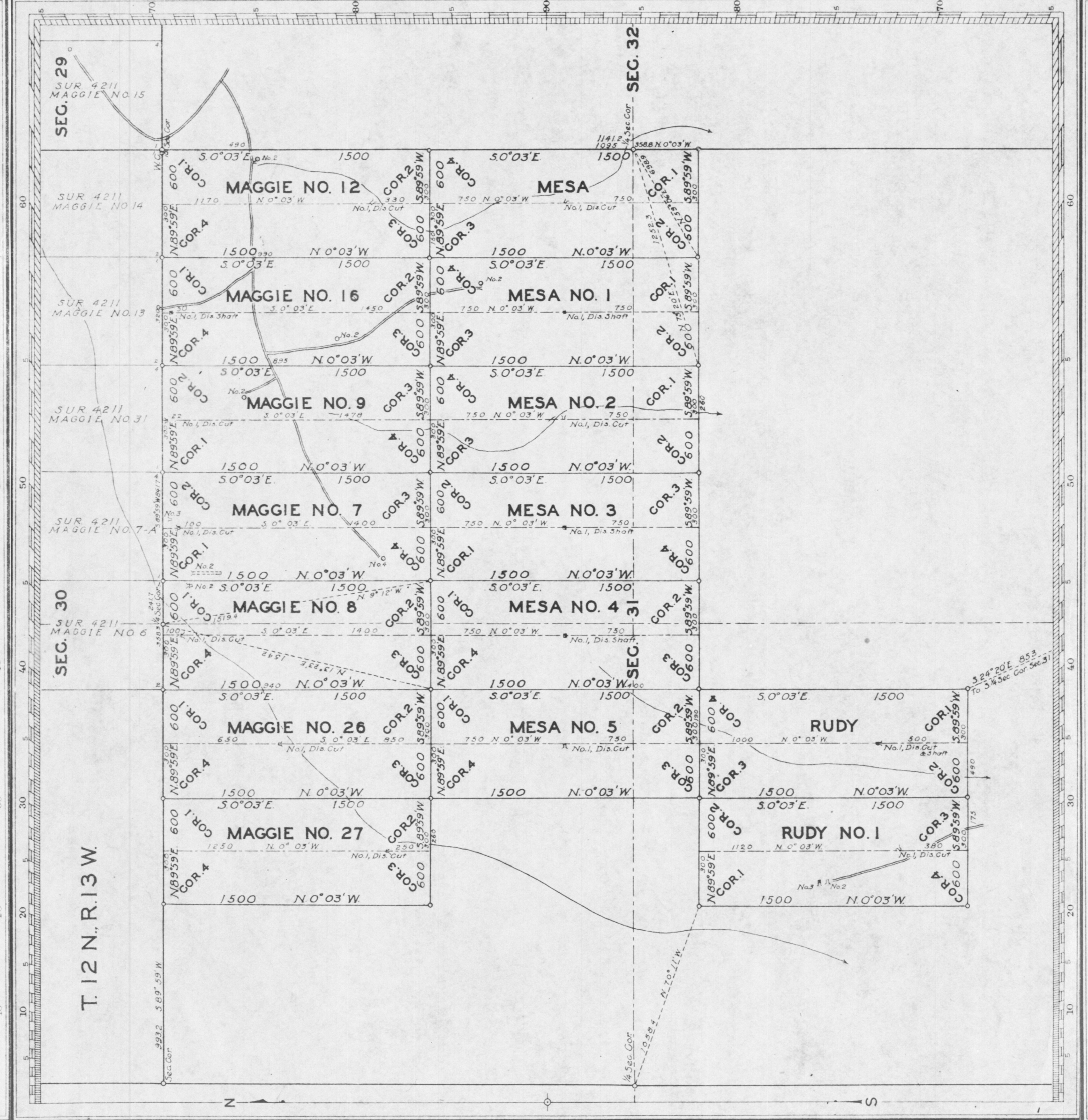
The Original Field Notes of the Survey of the Mining Claim from which this plat has been made under my direction, have been examined and approved, and are on file in this office, and I hereby certify that the plat is a correct and accurate description of said Mining Claim as well as if incorporated into a patent, serve fully to identify the premises, and that such reference is made therein to natural objects or permanent monuments as will perpetuate said plat for the locus thereof.

I further certify that five Hundred Dollars worth of labor has been expended on improvements made upon, or for the benefit of such location embraced in said mining claim by claimant or its grantors and 1 drill hole, total value \$11,240.

that the location of said improvements is correctly shown upon this plat, and that no portion of or interest in said labor or improvements has been included in the estimate of expenditures upon any other claim.

And I further certify that this is a correct plat of said Mining Claim made in conformity with said original field notes of the survey thereof, and the same is hereby approved.

Public Survey Office
 Phoenix, Arizona, 1938
Ralph L. Motz
 Office Industrial Engineer for ARIZONA.



Mineral Survey No. 4211 (2 Sheets)
 ARIZONA Land District
PLAT
 OF THE CLAIM OF
 ARIZONA MANGANESE CORPORATION
 known as the

MAGGIE NO. 6, MAGGIE NO. 7, MAGGIE NO. 7-A,
 MAGGIE NO. 8, MAGGIE NO. 9, MAGGIE NO. 12,
 MAGGIE NO. 13, MAGGIE NO. 14, MAGGIE NO. 15,
 MAGGIE NO. 16, MAGGIE NO. 17, MAGGIE NO. 22,
 MAGGIE NO. 23, MAGGIE NO. 24, MAGGIE NO. 25,
 MAGGIE NO. 26, MAGGIE NO. 27, MAGGIE NO. 31,
 MESA, MESA NO. 1, MESA NO. 2, MESA NO. 3,
 MESA NO. 4, MESA NO. 5, MUROC, MUROC NO. 1, MUROC
 NO. 2, MUROC NO. 3, MUROC NO. 4, RUDY, RUDY NO. 1
 OWENS COUNTY, ARIZONA

Containing an Area of 500
 Foot to the inch.
 Variation 15° 20' E.
 BY
 SURVEYED February 14 - March 1 1938
 RALPH L. MOTZ
 Mineral Surveyor.

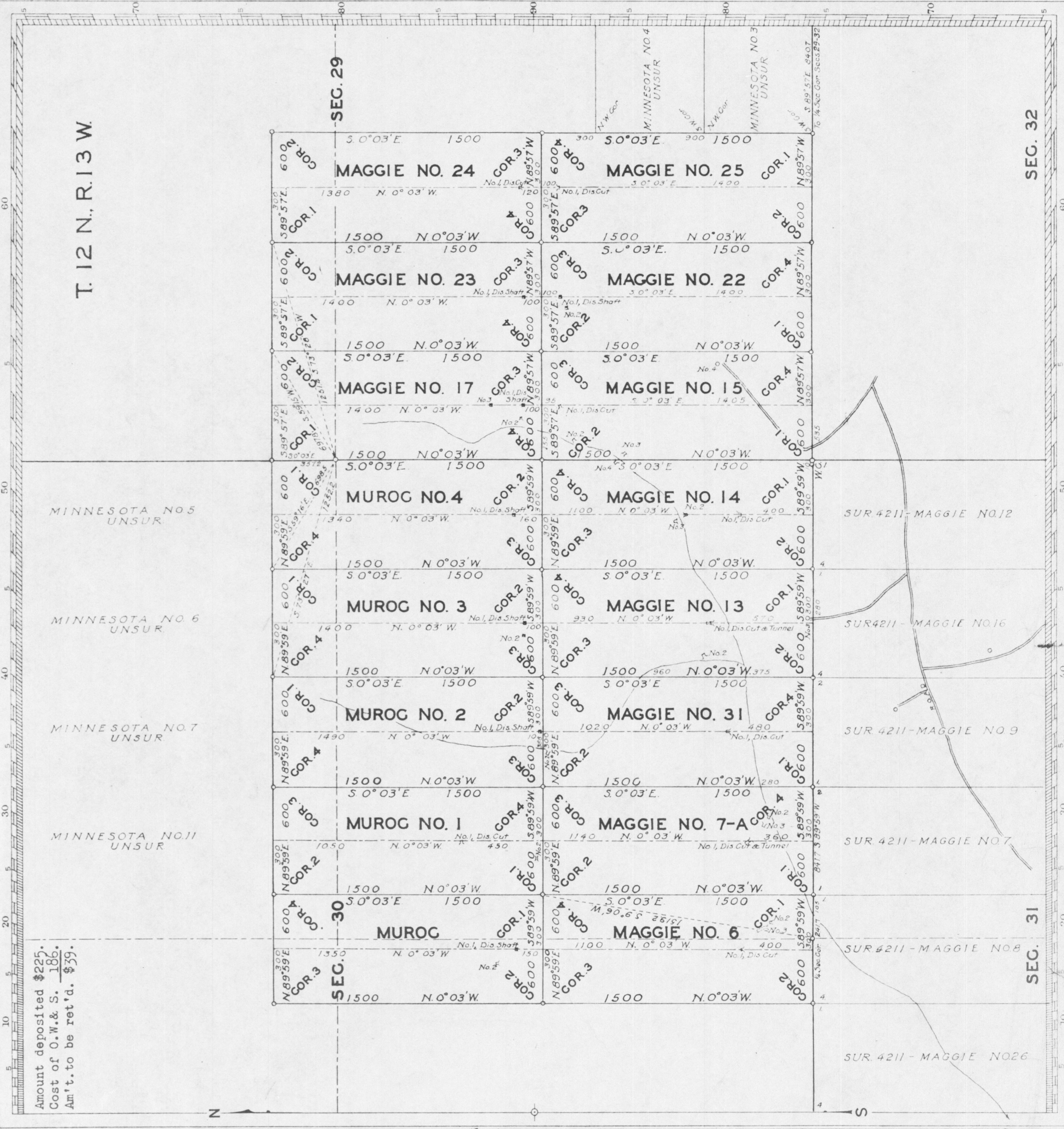
The Original Field Notes of the Survey of the Mining Claim from which this plat has been made under my direction, have been examined and approved, and are on file in this office, and I hereby certify that they furnish such an accurate description of said Mining Claim as well as if incorporated into a patent, serve fully to identify the premises, and that such reference is made therein to natural objects or permanent monuments as will perpetuate said plat for the locus thereof.

I further certify that five Hundred Dollars worth of labor has been expended on improvements made upon, or for the benefit of each location embraced in said mining claim by claimant or its grantors and 115 shafts, 4 tunnels, 1 trench, 1 mine, 7 drill holes, and 5300 ft. of road, total value \$20,400.

that the location of said improvements is correctly shown upon this plat, and that no portion of or interest in said labor or improvements has been included in the estimate of expenditures upon any other claim.

And I further certify that this is a correct plat of said Mining Claim made in conformity with said original field notes of the survey thereof, and the same is hereby approved.

Public Survey Office
 Phoenix, Arizona, 1938
Ralph L. Motz
 Office Industrial Engineer for ARIZONA.



Mineral Survey No. 4212 (Sheet No. 2)
 ARIZONA Land District
PLAT
 OF THE CLAIM OF
 KNOWN AS THE

MAGGIE NO. 6, MAGGIE NO. 7, MAGGIE NO. 7-A,
 MAGGIE NO. 8, MAGGIE NO. 9, MAGGIE NO. 12,
 MAGGIE NO. 13, MAGGIE NO. 14, MAGGIE NO. 15,
 MAGGIE NO. 16, MAGGIE NO. 17, MAGGIE NO. 22,
 MAGGIE NO. 23, MAGGIE NO. 24, MAGGIE NO. 25,
 MAGGIE NO. 26, MAGGIE NO. 27, MURROC,
 MURROC NO. 1, MURROC NO. 2, MURROC NO. 3,
 MURROC NO. 4, RUDY, RUDY NO. 1
 OWENS COUNTY, ARIZONA

Containing an Area of 500
 Foot to the inch.
 Variation 15° 20' E.
 BY
 SURVEYED February 14 - March 1 1938
 RALPH L. MOTZ
 Mineral Surveyor.

The Original Field Notes of the Survey of the Mining Claim from which this plat has been made under my direction, have been examined and approved, and are on file in this office, and I hereby certify that they furnish such an accurate description of said Mining Claim as well as if incorporated into a patent, serve fully to identify the premises, and that such reference is made therein to natural objects or permanent monuments as will perpetuate said plat for the locus thereof.

I further certify that five Hundred Dollars worth of labor has been expended on improvements made upon, or for the benefit of each location embraced in said mining claim by claimant or its grantors and 115 shafts, 4 tunnels, 1 trench, 1 mine, 7 drill holes, and 5300 ft. of road, total value \$20,400.

that the location of said improvements is correctly shown upon this plat, and that no portion of or interest in said labor or improvements has been included in the estimate of expenditures upon any other claim.

And I further certify that this is a correct plat of said Mining Claim made in conformity with said original field notes of the survey thereof, and the same is hereby approved.

Public Survey Office
 Phoenix, Arizona, 1938
Ralph L. Motz
 Office Industrial Engineer for ARIZONA.