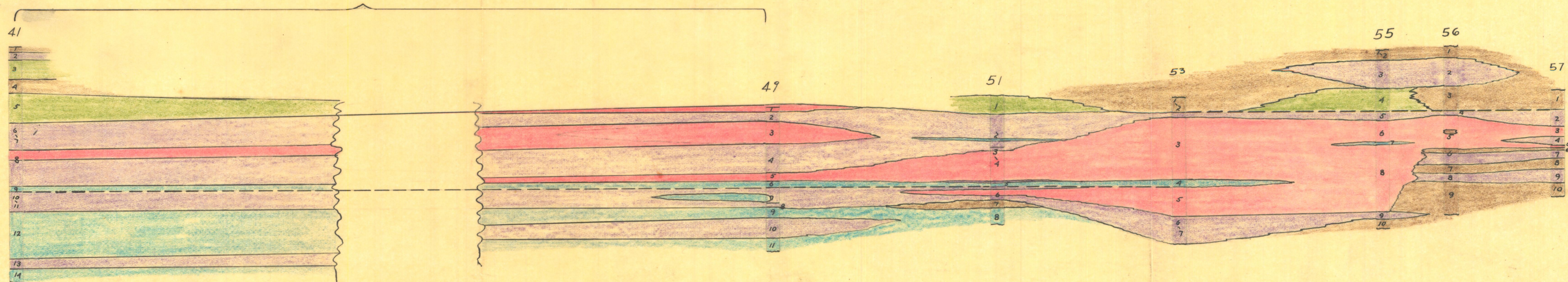


TALUS COVERED - CORRELATION UNCERTIAN



CONFIDENTIAL

U.S. GEOLOGICAL SURVEY

APACHE IRON PROJECT  
FOR AREA WEST OF CANYON CREEK  
CORRELATION OF SAMPLE TRENCHES

BY - A.P. BUTLER      APRIL 4, 1942

HORIZONTAL SCALE    1 INCH = 200 FEET

VERTICAL SCALE      1 INCH = 20 FEET

- HIGH GRADE ORE 50% FE AND UP
- LOW GRADE ORE 25-50%
- SANDSTONE
- CONTORTED JASPER
- JASPER



TRENCHES 41-51-53-56 BASED ON ASSAYS  
OTHERS BY ESTIMATE