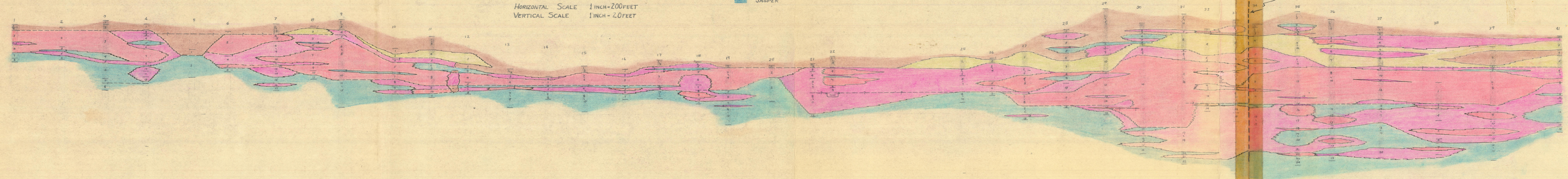
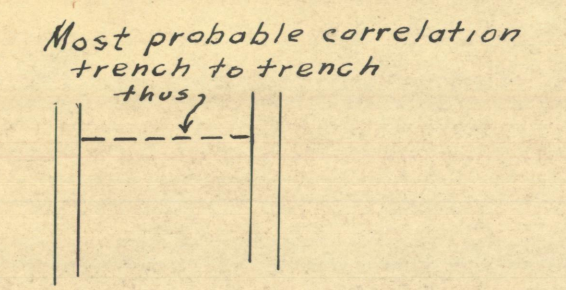


CONFIDENTIAL
 U.S. GEOLOGICAL SURVEY
 APACHE IRON PROJECT
 CORRELATION OF SAMPLE TRENCHES
 By A.P. BUTLER Revised MARCH 23 1942
 HORIZONTAL SCALE 1 INCH = 200 FEET
 VERTICAL SCALE 1 INCH = 20 FEET

- HIGH GRADE ORE 50% Fe # Up
- LOW GRADE ORE 25-50% Fe
- SANDSTONE
- CONTORTED JASPER
- JASPER



REDUCE THIS LINE
 TO THIS