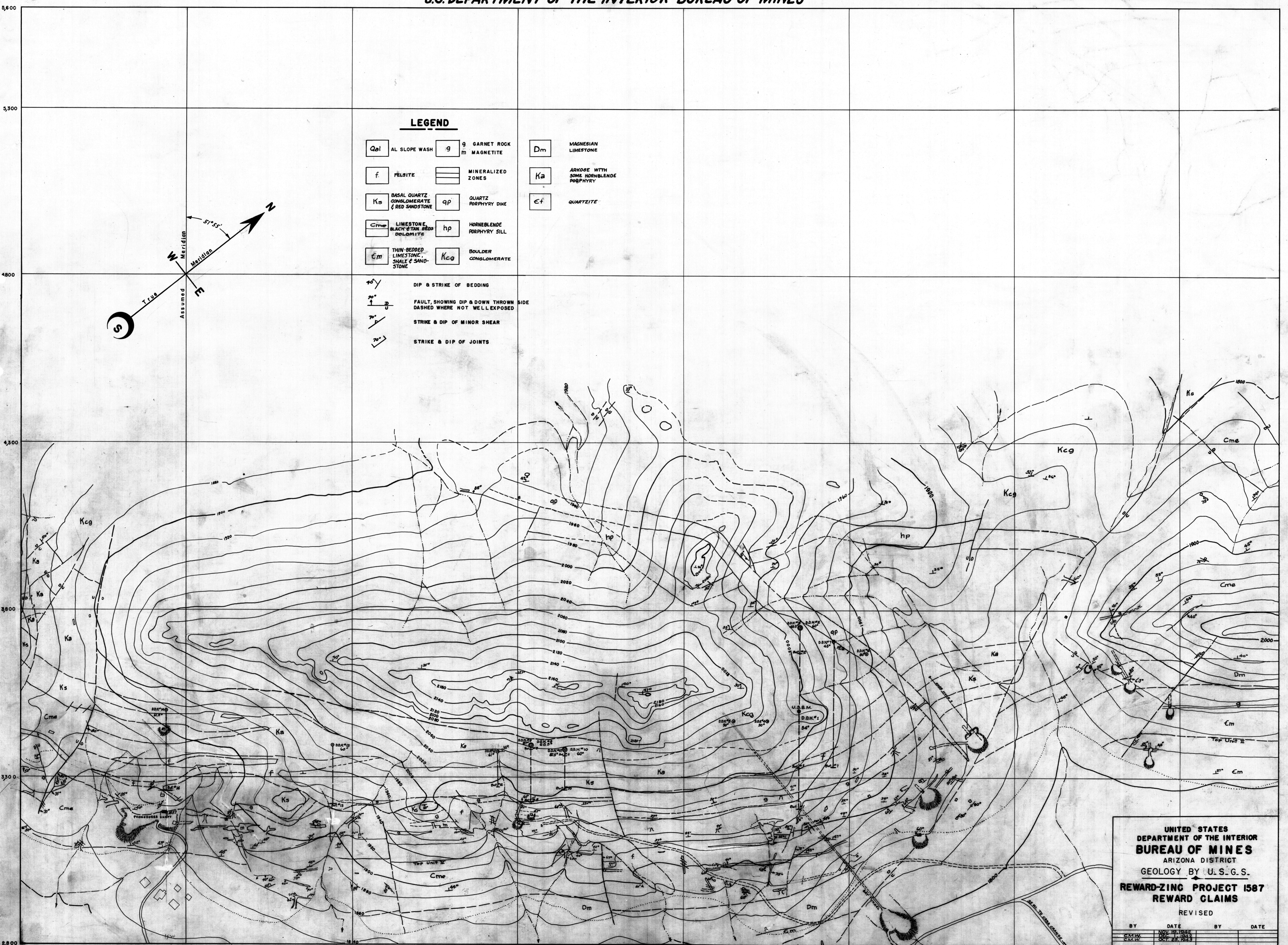


U.S. DEPARTMENT OF THE INTERIOR-BUREAU OF MINES



LEGEND

- | | | | | | |
|-----|---|--------------------|----------------------|----|--------------------------------------|
| Qal | AL SLOPE WASH | g | GARNET ROCK | Dm | MAGNESIAN LIMESTONE |
| f | FELSITE | m | MAGNETITE | Ka | ARKOSE WITH SOME HORNBLENDE PORPHYRY |
| Ks | BASAL QUARTZ CONGLOMERATE & RED SANDSTONE | (horizontal lines) | MINERALIZED ZONES | Cf | QUARTZITE |
| Cme | LIMESTONE, BLACK & TAN BEDS, DOLOMITE | qp | QUARTZ PORPHYRY DIKE | hp | HORNBLENDE PORPHYRY SILL |
| Cm | THIN-BEDDED LIMESTONE, SHALE & SANDSTONE | Kcg | BOULDER CONGLOMERATE | | |
-
- | | |
|---------|--|
| 40°/70° | DIP & STRIKE OF BEDDING |
| 70°/30° | FAULT, SHOWING DIP & DOWN THROWN SIDE, DASHED WHERE NOT WELL EXPOSED |
| 70°/30° | STRIKE & DIP OF MINOR SHEAR |
| 70°/30° | STRIKE & DIP OF JOINTS |

UNITED STATES
DEPARTMENT OF THE INTERIOR
BUREAU OF MINES
ARIZONA DISTRICT
GEOLOGY BY U. S. G. S.
REWARD-ZINC PROJECT 1587
REWARD CLAIMS
REVISED

BY	DATE	BY	DATE
C.M.V.	NOV 18, 1924		
C.M.V.	DEC 11, 1924		
C.M.V.	FEB 22, 1927		