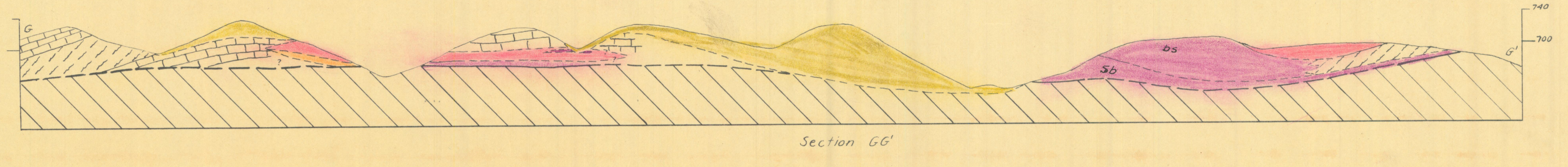
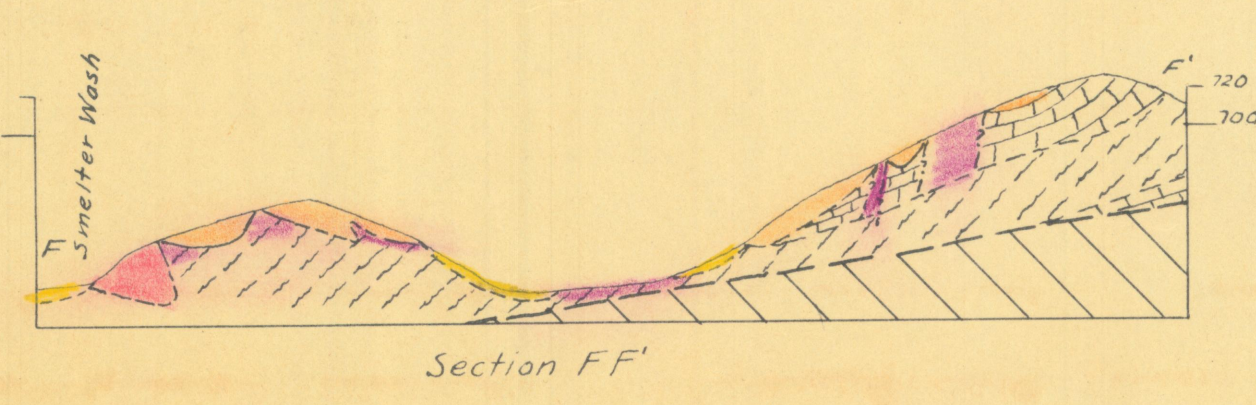
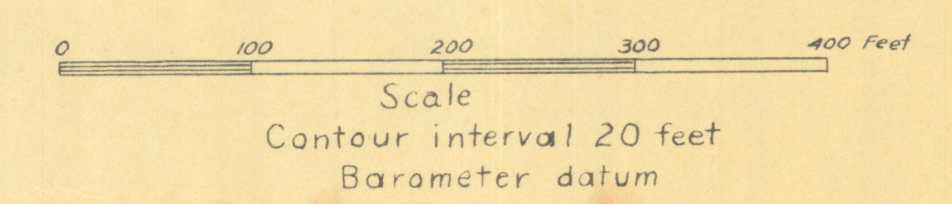
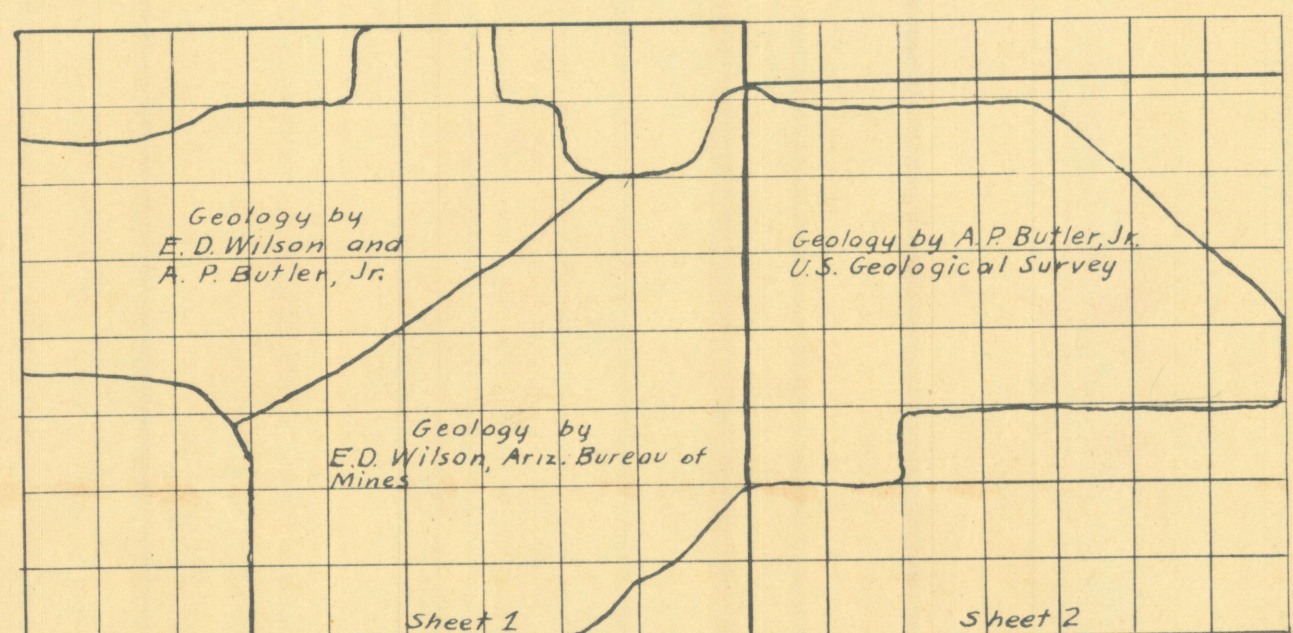


U. S. Geological Survey  
**CONFIDENTIAL**  
 Not for public inspection or quotation

EXPLANATION

- |          |     |  |
|----------|-----|--|
| SECTIONS | MAP |  |
|          |     | Alluvium, talus, and dumps                     |
|          |     | D - dumps                                      |
|          |     | Schist and brecciated schist                   |
|          |     | Limestone                                      |
|          |     | Siliceous breccia and gouge                    |
|          |     | Gneiss   |
|          |     | Iron ore - Est. more than 50% Fe               |
|          |     | Iron ore - Est. 35-50% Fe                      |
|          |     | Ferruginous rock, iron-stained to 35% Fe       |
|          |     | Sb - siliceous breccia, bs - brecciated schist |
|          |     | Hematite filled fissure                        |
|          |     | Strike and dip of beds                         |
|          |     | Vertical beds                                  |
|          |     | Thrust fault at top of gneiss                  |
|          |     | Fault showing dip                              |
|          |     | Shaft  |
|          |     | Inclined shaft                                 |
|          |     | Adit   |
|          |     | Open cuts of various shapes                    |
|          |     | Roads  |
|          |     | Churn Drill Hole                               |



U. S. DEPARTMENT OF THE INTERIOR  
 GEOLOGICAL SURVEY  
 Bureau of Mines Project 931  
**GEOLOGIC MAP OF  
 THE PLANET AREA**  
 YUMA COUNTY, ARIZONA  
 May 1943  
 Sheet 2 - Eastern part of area map and sections

Figure 2