

FIG. 6 - LONGITUDINAL SECTION THRU CHURN DRILL HOLE NO. 7 & DIAMOND DRILL HOLES NO. 2, 4, 7 & 9

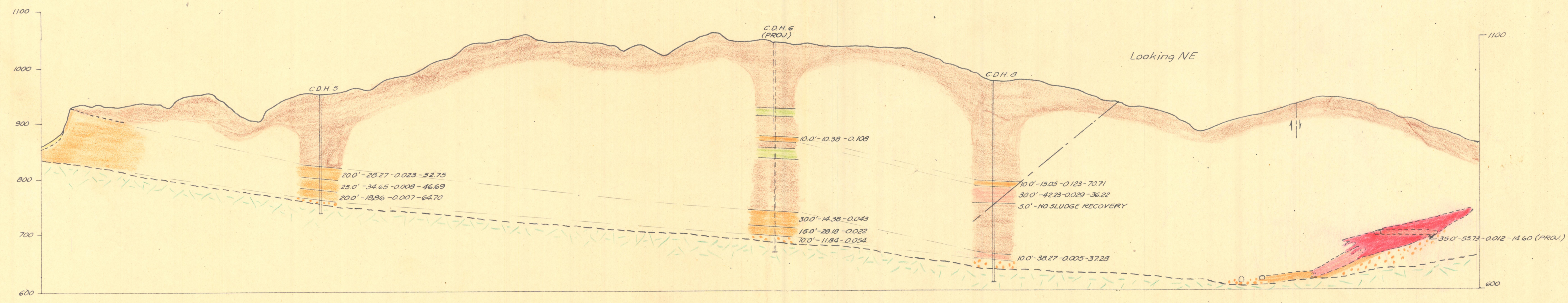


FIG. 5 - SECTION THRU CHURN DRILL HOLES NO. 5 & 8

Notes:  
 First fig. indicates length of sample  
 Second fig. indicates % Fe  
 Third fig. indicates % Cu  
 Fourth fig. indicates % SiO<sub>2</sub>

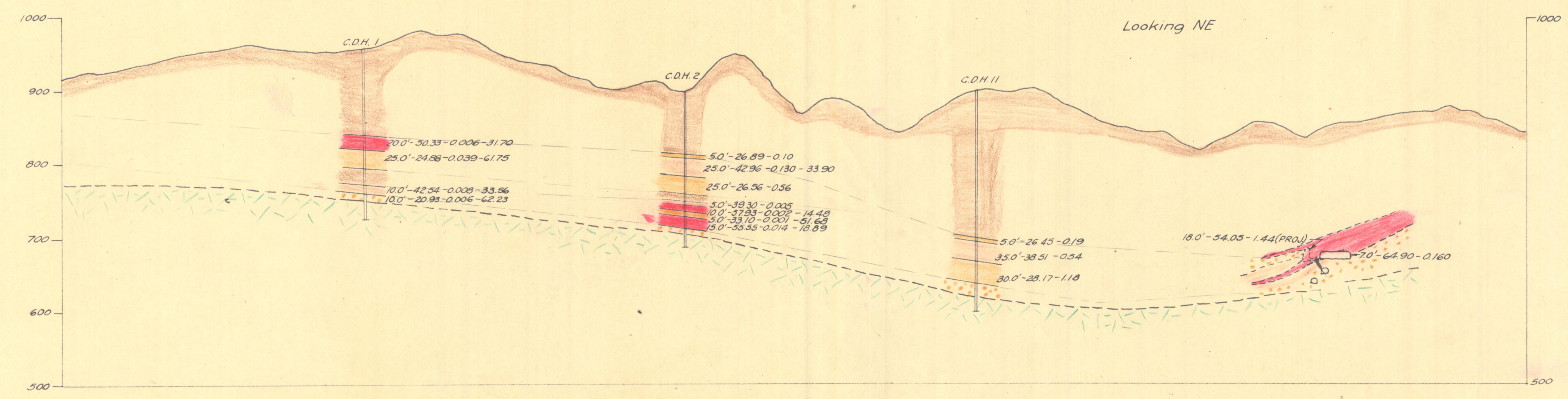
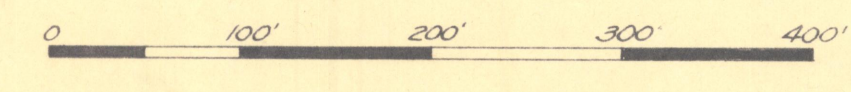


FIG. 4 - SECTION THRU CHURN DRILL HOLES NO. 1, 2 & 11

- LEGEND**
- Iron ore, 50%+ Fe
  - Weak iron mineralization, 35-50% Fe
  - Very weak iron mineralization, 35% Fe
  - Siliceous breccia
  - Gneiss
  - Alluvium
  - Schist
  - Rhyolite schist
  - Fault



**NEW PLANET IRON PROJECT 931  
 YUMA CO., ARIZ.**

OC