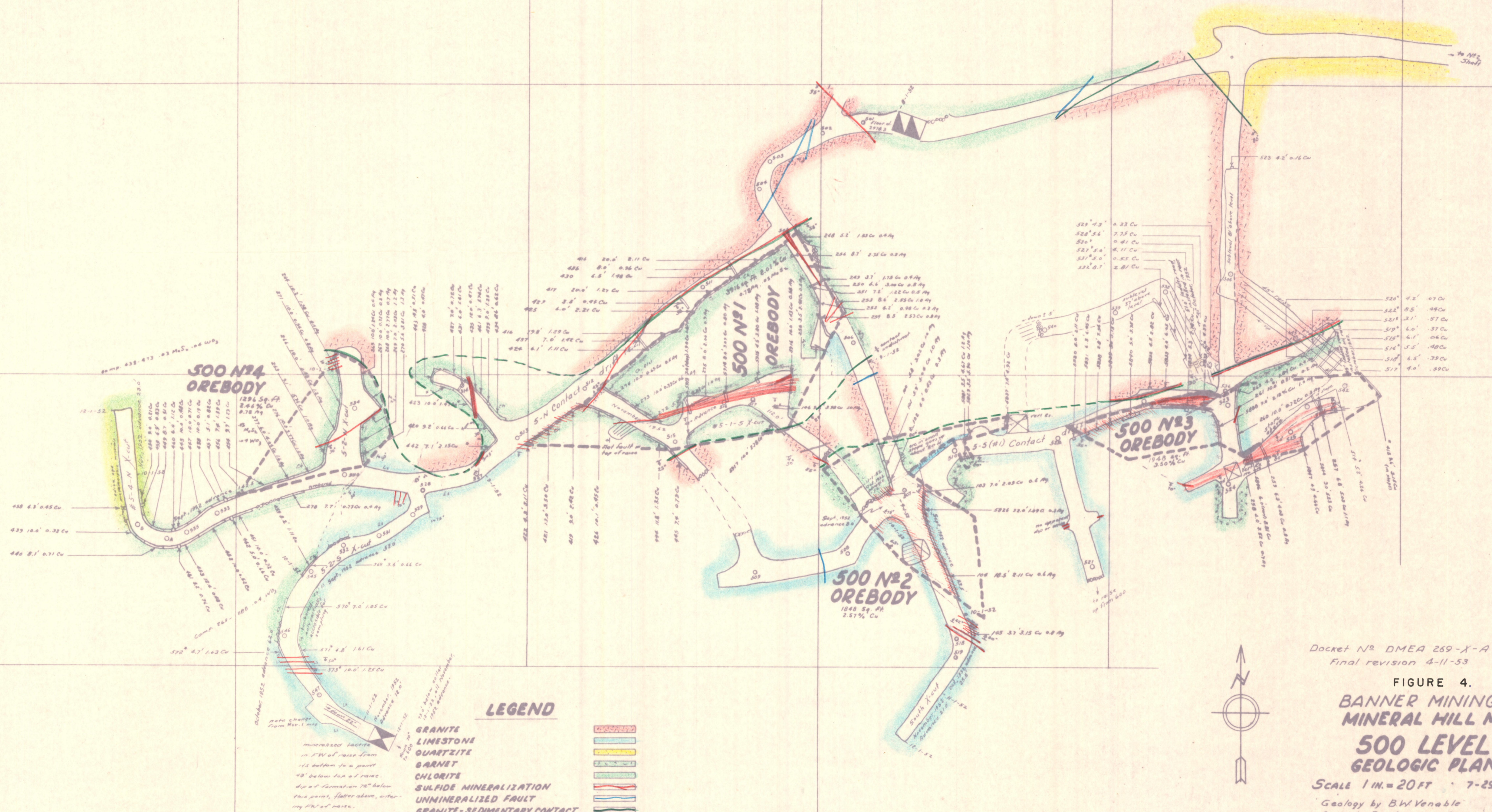


Ore reserve summary - 4-11-53

500 N#1 3916 x 2.01 = 7871
 500 N#2 1848 x 2.57 = 4749
 500 N#3 1948 x 3.50 = 6818
 500 N#4 1296 x 2.46 = 3188
 9008 sq ft 22,626

$\frac{22,626}{9008} = 2.51\%$ Copper average grade

$\frac{5008}{10.5} = 858$ tons per vertical foot



Docket No DMEA 269-X-A
 Final revision 4-11-53

FIGURE 4.
 BANNER MINING CO.
 MINERAL HILL MINE
 500 LEVEL
 GEOLOGIC PLAN
 SCALE 1 IN. = 20 FT 7-29-52

Geology by B.W. Venable
 Control - Brunton - Tape Traverse by
 B.W. Venable & J.H. Stevens
 Revised 10-15-52
 Revised 4-11-53