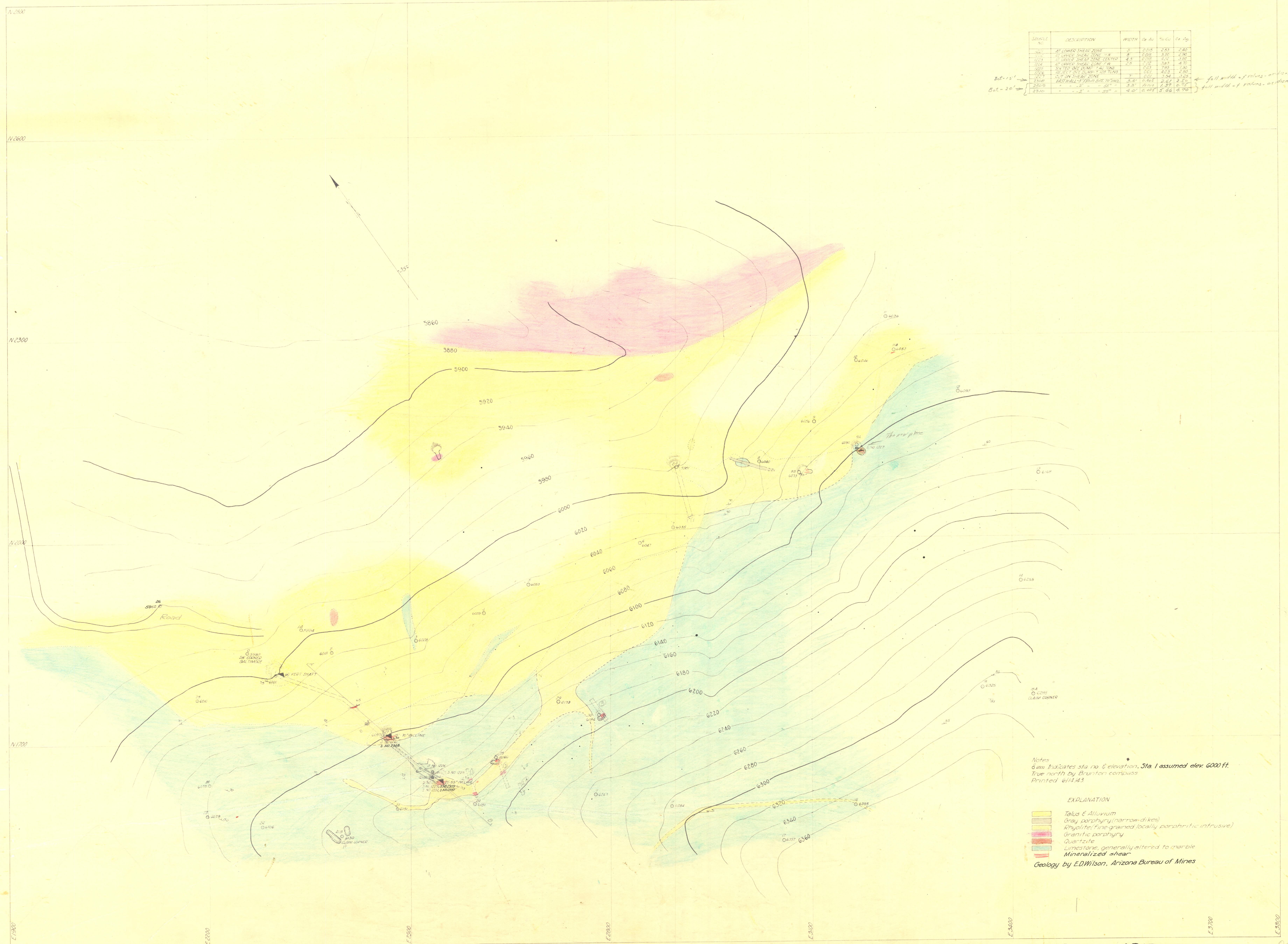


U.S. DEPARTMENT OF THE INTERIOR - BUREAU OF MINES

SAMPLE NO.	DESCRIPTION	WIDTH	% Au	% Cu	% Ag
2287	AT LOWER SHEAR ZONE	6	2.28	2.83	2.40
2288	AT LOWER SHEAR ZONE SW	6	0.02	3.20	2.90
2289	AT LOWER SHEAR ZONE CENTER	4.8	0.02	2.71	2.86
2290	AT LOWER SHEAR ZONE SW	2.5	0.78	3.83	4.70
2291	SCATED ONE QUARTZ TAGS	7.3	7.93	1.30	
2292	AT LOWER SHEAR ZONE SW	10.1	4.23	4.90	
2293	AT LOWER SHEAR ZONE	7	0.01	3.04	3.20
2294	AT LOWER SHEAR ZONE SW	3.5	0.02	2.61	2.85
2295	AT LOWER SHEAR ZONE SW	3.8	0.02	1.39	0.50
2296	AT LOWER SHEAR ZONE SW	4.0	0.02	5.66	4.90

Bot. - 15' → full width of veins - overlaid  
 Bot. - 20' → full width of veins - overlaid



Notes  
 6200 indicates sta no & elevation. Sta. 1 assumed elev. 6000 Ft.  
 True north by Brunton compass  
 Printed 6/11/43

- EXPLANATION
- Talus & Alluvium
  - Gray porphyry (narrow dikes)
  - Rhyolite (fine grained locally porphyritic intrusive)
  - Granitic porphyry
  - Quartzite
  - Limestone, generally altered to marble
  - Mineralized shear
- Geology by E.D. Wilson, Arizona Bureau of Mines