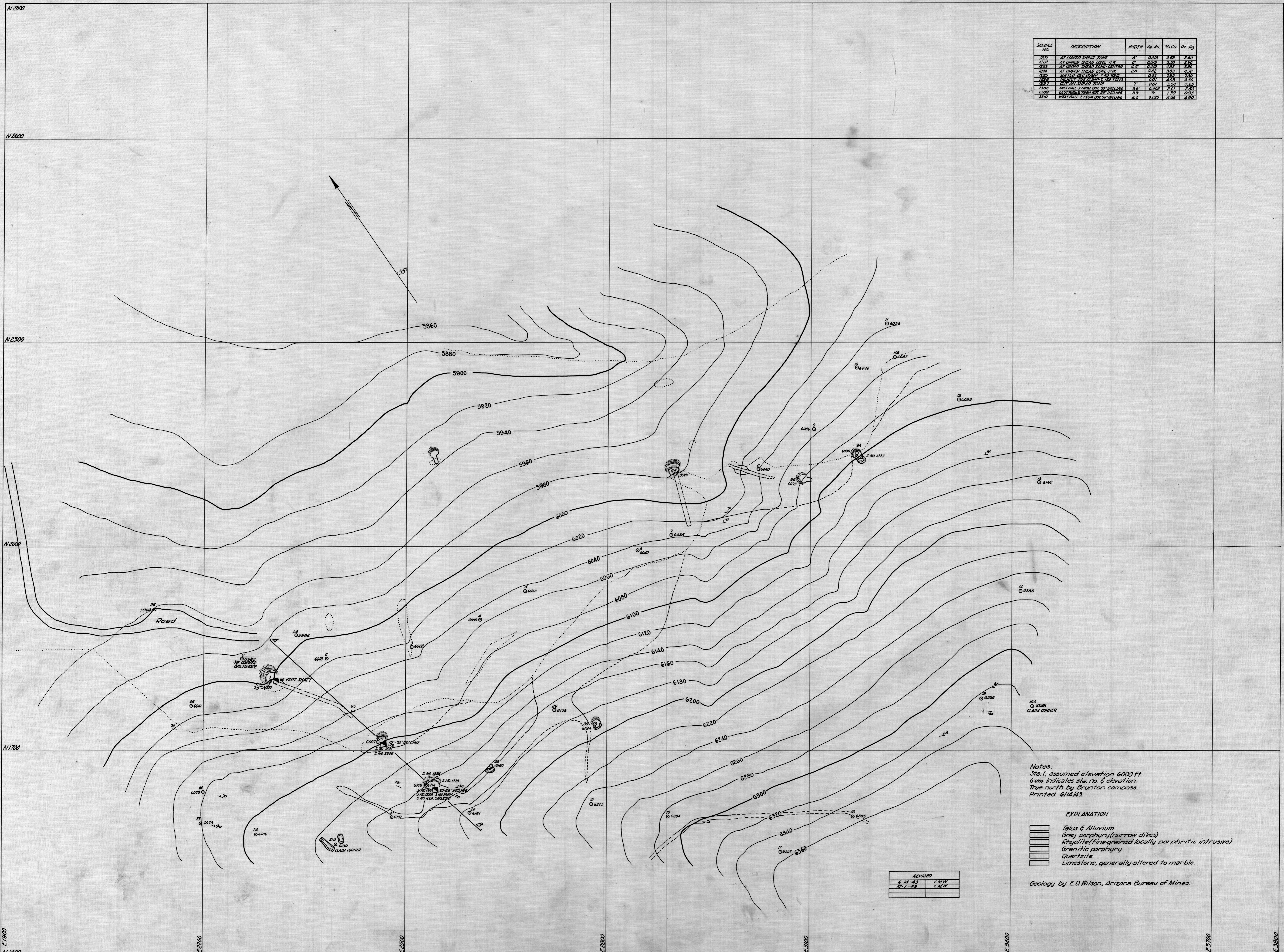


U.S. DEPARTMENT OF THE INTERIOR - BUREAU OF MINES

SAMPLE NO.	DESCRIPTION	WIDTH	Gr. Au.	% Cu.	Gr. Ag.
1221	AT LOWER SHEAR ZONE	5'	0.015	2.83	2.40
1222	AT UPPER SHEAR ZONE F.M.	5'	0.025	3.30	2.90
1223	AT UPPER SHEAR ZONE CENTER	4.5'	0.029	4.12	3.50
1224	AT UPPER SHEAR ZONE F.M.	2.5'	0.02	3.83	4.70
1225	SOUTH SIDE DUMP - 145 TONS	0.83'	0.03	7.58	7.30
1226	SOUTH SIDE DUMP - 145 TONS	0.07'	4.03	2.30	
1227	CUT ON SHEAR ZONE	7'	0.01	3.54	3.05
2308	PIT HILL FROM BOT. 35° INCLINE	3.3'	0.002	2.61	1.40
2309	EAST HILL FROM BOT. 35° INCLINE	3.3'	0.001	1.39	0.50
2310	WEST HILL FROM BOT. 35° INCLINE	4.0'	0.025	2.64	4.60



Notes:
 Sta. 1, assumed elevation 6000 Ft.
 6000 indicates sta. no. & elevation.
 True north by Brunton compass.
 Printed 6/14/43.

- EXPLANATION
- Talus & Alluvium
 - Gray porphyry (narrow dikes)
 - Chryolite (fine-grained locally porphyritic intrusive)
 - Granitic porphyry
 - Quartzite
 - Limestone, generally altered to marble.

Geology by E. D. Wilson, Arizona Bureau of Mines.

REVISED	
6-14-43	C.M.W.
6-1-43	C.M.W.