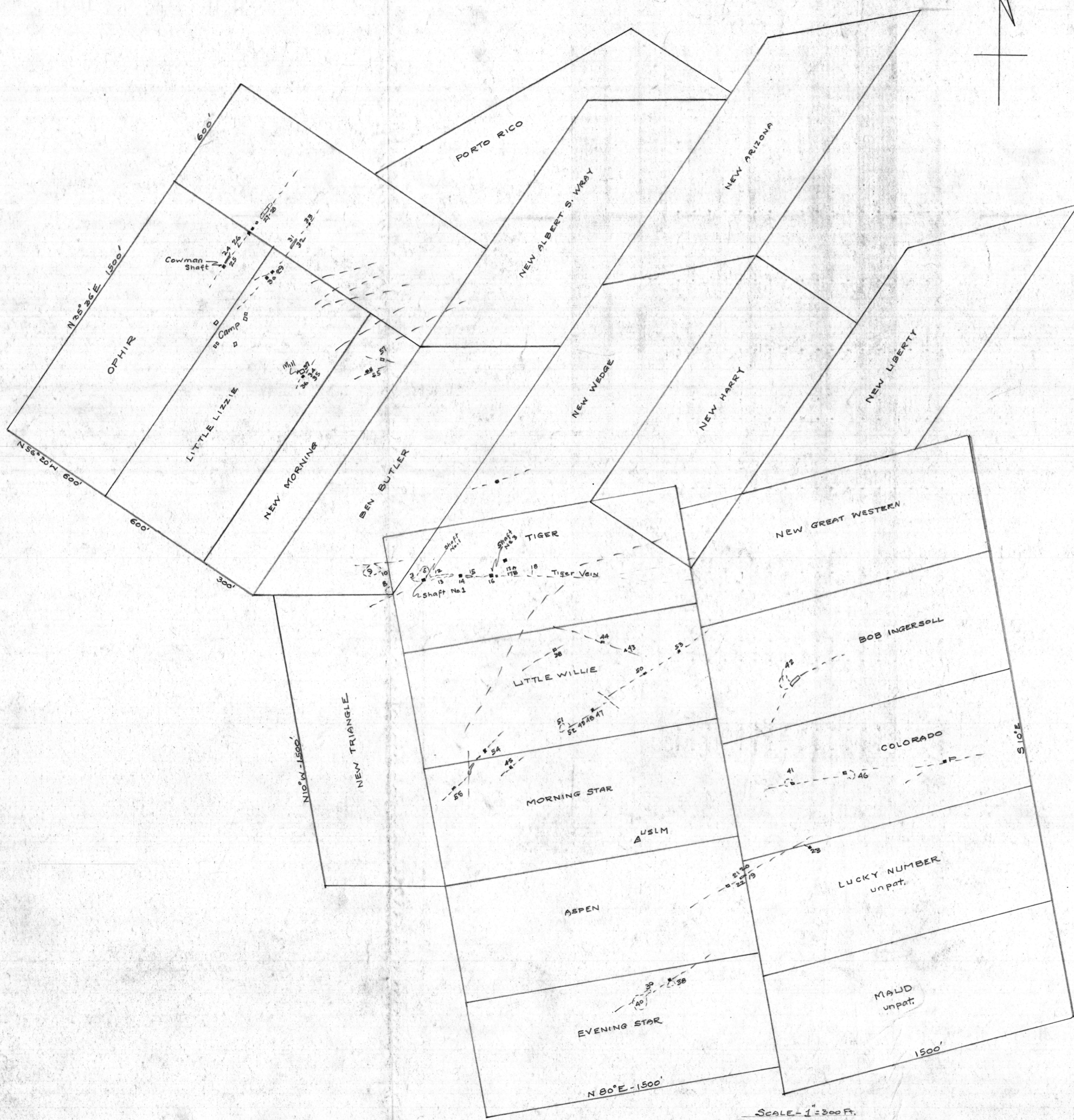


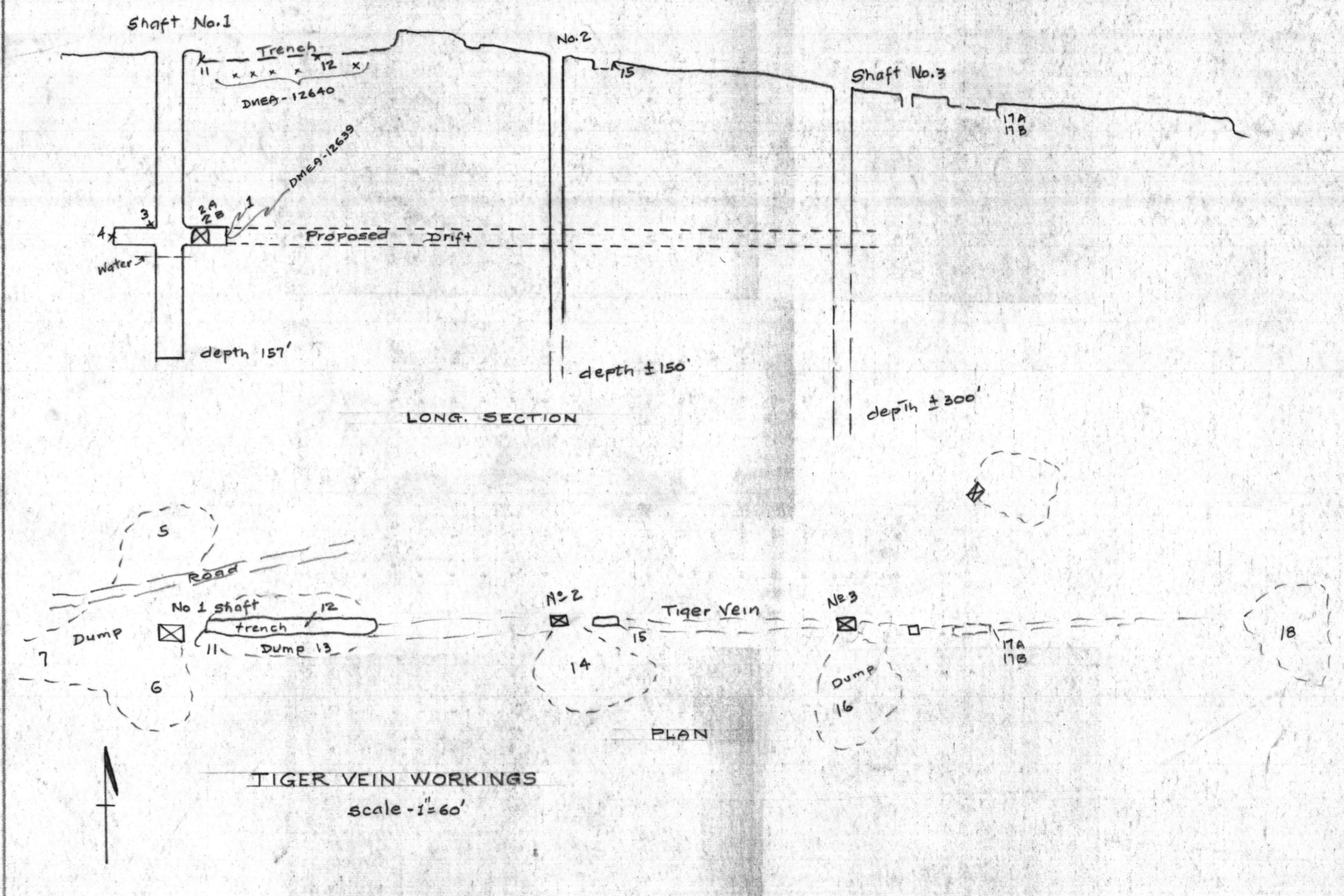
Trim Line



SCALE - 1" = 300'

SAMPLE RESULTS
No. 1-58 (incl.) by T.P. Lane No. 12639 & No. 12640 by DMEA Examiners

Sample No.	Width	Oz./Ton				Remarks	Sample No.	Width	Oz./Ton				Remarks
		Au	Ag	%Cu	%Pb			Au	Ag	%Cu	%Pb		
1	50"	.05	.1	1.11	14.30	No. 1 Shaft 96' Lev. - Face E drift	30	72"	.01	Tr	.15	.81	Vein Parallel to Cowman Vein
2A	30"	.01	.1	.15		" " " HW of vein at lcut	31	52"	.02	.2	.05	.41	" " " " " " "
2B	102"	.02	.2	.72		" " " FW " " " "	32	Dump	.01	.2	.75	.41	do - Qts - 25 Tons
3	64"	Tr	Tr	.05		" " " Vein at shaft	33	30"	.02	.2	.10	.20	Vein Parallel to Cowman Vein
4	50"	.01	.1	.05		" " " Face W drift	34	70"	.02	.2	.05	Tr	Mill vein drift face
5	Dump	.03	.1	.39		" " " North dump Qts 100 Tons	35	60"	.02	.2	.10	.10	" " " at shallow shaft
6	"	.06	.6	.30		" " " South " " " 90	36	Dump	.04	.1	.10	Tr	Ore in Mill bin 25 Tons
7	"	.01	.2	.30		" " " West " " " 200	37	Bin	.16	.7	.30	"	Ore in Mill bin 25 Tons
8	"	.07	.5	.20		Shallow shaft SW Nol " 12	38	Dump	.05	.4	.35	"	Shaft-60'-dump Qts 20 Tons
9	"	.07	.8	.20		Deep shaft W dump " 4	39	20"	.01	.3	.26	"	Vein in end of cut
10	"	.03	.2	.76		" " " E " " 20	40	Dump	.04	.8	.15	"	Dump at shaft & out-50 Tons Qts
11	56"	.15	.9	.35		Vein-end of cut near Nol shaft	41	"	.11	.3	.15	"	Red Qts-deep shaft-40 Tons
12	102"	.12	.2	.61		Vein - in cut " " "	42	"	.04	.3	.15	"	Dump at shaft & out-50 Tons Qts
13	Dump	.04	.2	.15		Dump from cut - Qts 100 Tons	43	22"	.08	.4	.20	"	Vein red Qts
14	"	.02	.1	.05		Dump at deep shaft-Qts 12 Tons	44	Dump	.07	.3	.15	.10	Red Qts dump - 250 Tons Qts
15	90"	.04	.2	.20		Vein in cut E of deep shaft	45	"	.01	.3	Tr	" " " " 3 " "	
16	Dump	.03	.1	.20		Dump at Shaft No. 3-Qts 50 Tons	46	"	.02	.2	.05	.10	" " " " 10 " "
17A	10"	.01	Tr	1.31		FW of vein in cut	47	15"	Tr	Tr	.05	.35	Vein in face of Tunnel
17B	42"	.02	Tr	.10		HW " " " "	48	36"	.01	.2	.86	.30	" " " Tunnel
18	Muck	.02	Tr	.40		End of Reef Tiger vein 40 Tons	49	38"	.01	.2	.34	.61	" " " " "
19	46"	Tr	Tr	.10		Face of Aspen Tunnel	50	Dump	.01	.3	.10	.30	Dump from cut - 5 Tons Qts
20	42"	Tr	Tr	.05		Vein in " " " "	51	"	.04	.3	.15	.10	Tunnel dump - 200 Tons mixed
21	32"	Tr	Tr	.05		" at Portal Aspen Tunnel	52	36"	.01	.1	.15	Tr	Vein in 12' shaft at portal of Adit
22	38"	.04	.7	.35		" in cut SW of " " "	53	Dump	.03	.5	.20	.20	Dump from cut - 10 Tons Qts
23	Dump	.37	8.5	3.37	14.80	From stringer in shallow cut	54	"	.20	.3	.10	Tr	" at deep shaft - 50 Tons Qts
24	36"	.37	.2	.20		Vein in Cowman Tunnel	55	"	.12	.2	.05	.15	" " shaft - 25 Tons Qts
25	40"	.20	.1	.10		" at portal " " "	56	72"	.02	.1	.10	.10	Red Qts vein
26	28"	.22	.5	.10		" in cut above " " "	57	Dump	.34	.5	.10	.10	" " shaft dump
27	24"	.01	Tr	.10		" " Cowman " " "	58	"	.03	.2	.25	.26	Scattered dump from Cuts
28	21"	.02	Tr	.15		" " " " " "							
29	34"	Tr	Tr	.10	.40	" Parallel to Cowman Vein	12639	60"	.01	.1	.70	.05	No. 1 Shaft 96' Lev. - Face E drift
							12640	Dump	.08	.3	.18	.10	Grab dump East No. 1 Shaft



CLAIM and ASSAY MAP
RIO DEL MONTE MINES, INC.
ELLSWORTH MINING DISTRICT
YUMA COUNTY, ARIZ.

DMEA - 2702
Quartz veins

Trim Line