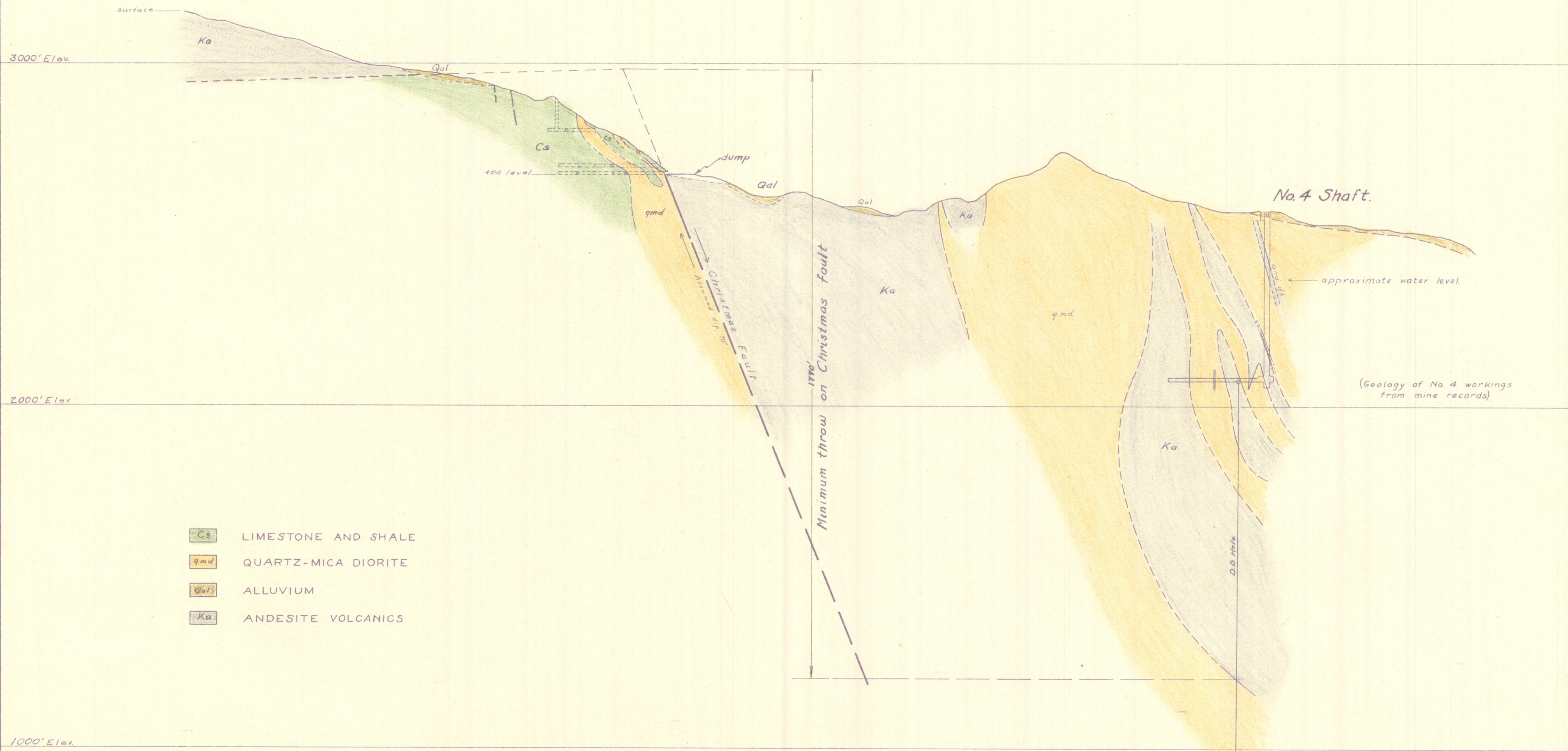
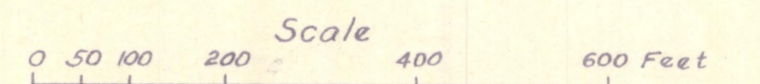


N35°E



- Cs LIMESTONE AND SHALE
- qmd QUARTZ-MICA DIORITE
- Qal ALLUVIUM
- Ka ANDESITE VOLCANICS

UNITED STATES DEPARTMENT OF THE INTERIOR
 GEOLOGICAL SURVEY
 BUREAU OF MINES PROJECT 1419
 CHRISTMAS COPPER MINE
 SECTION C-C'



Geology by N.P. Peterson and R.W. Swanson