

FIG. 9

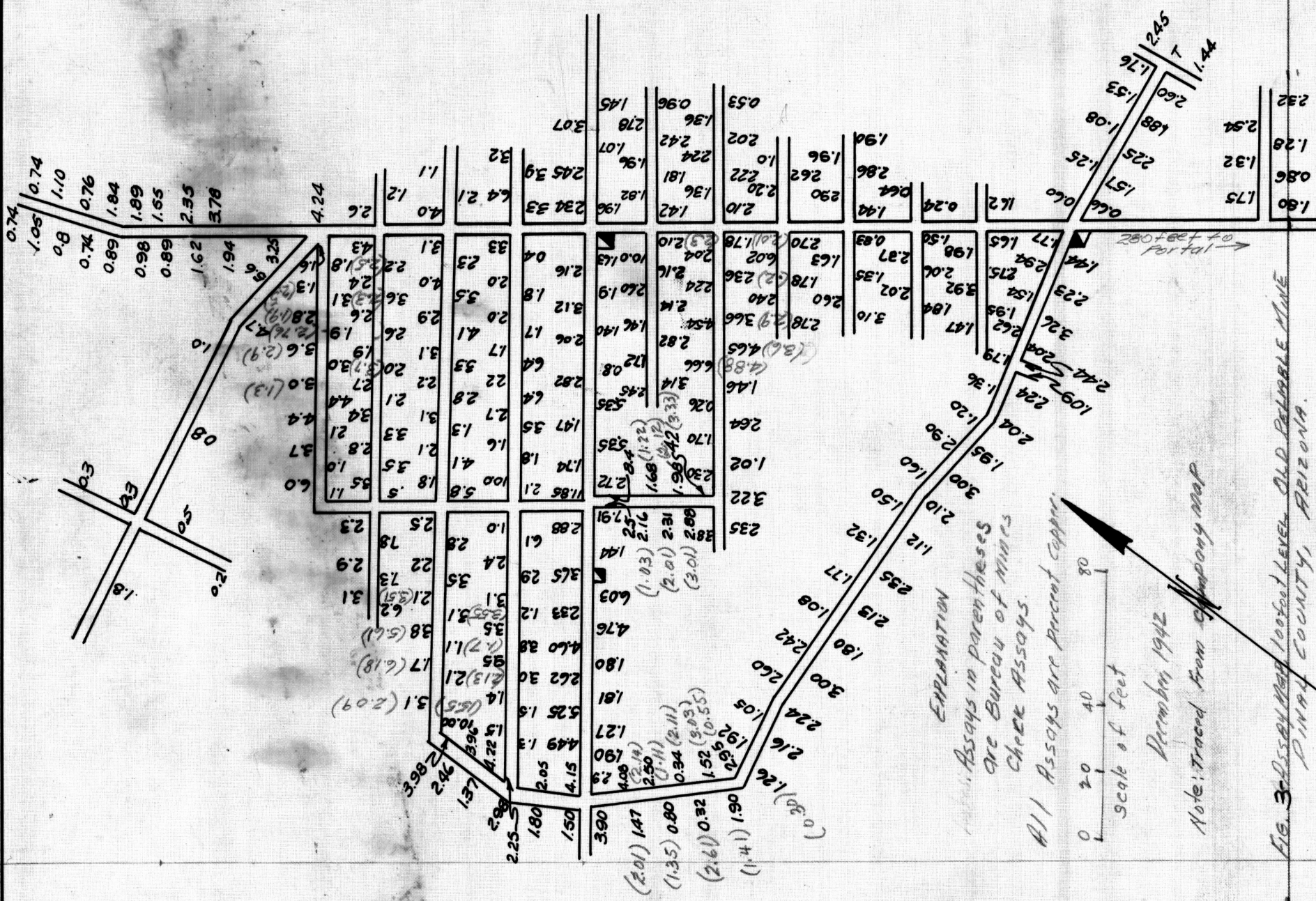


FIG. 3 Assay Map 100-foot Level Old Reliable Mine Pinal County, Arizona.

Note: Retraced from Photostatic copy, 12/14/42.

UNITED STATES
 DEPARTMENT OF THE INTERIOR
BUREAU OF MINES
 ARIZONA DISTRICT
ASSAY MAP-100' LEVEL
 OLD RELIABLE MINE

SCALE: 1"=40'

DECEMBER 14, 1942

0.66	T
2.15	T
0.50	T
0.36	T
1.50	T
2.32	T