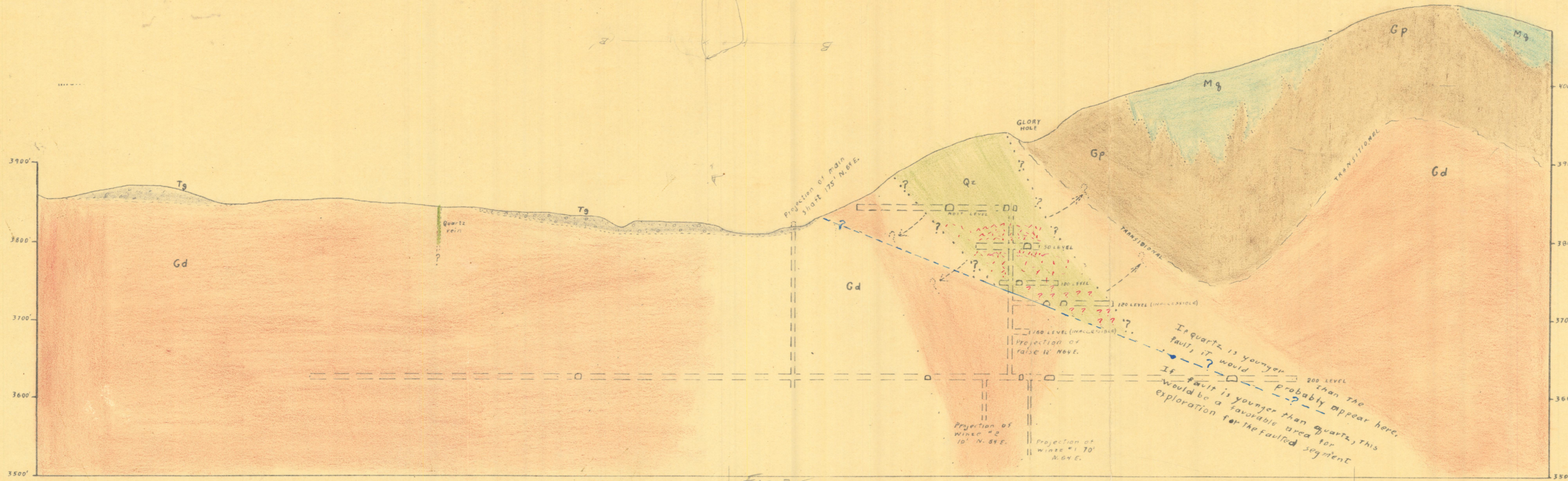


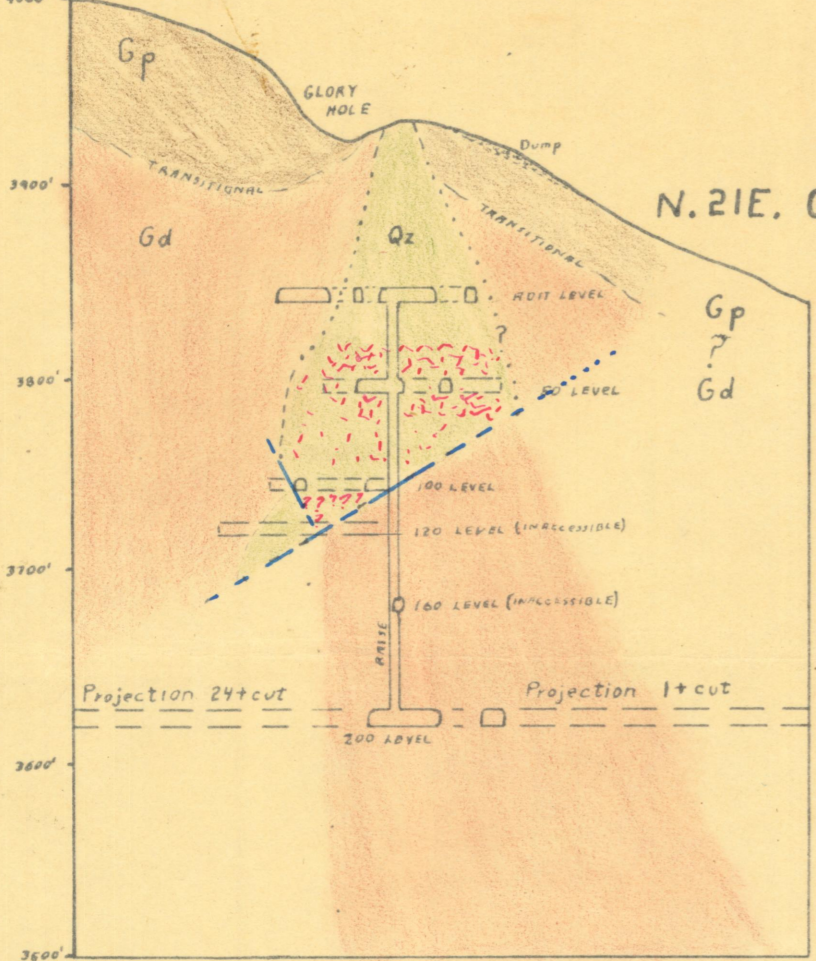
A N.26W.

S.26E. A'



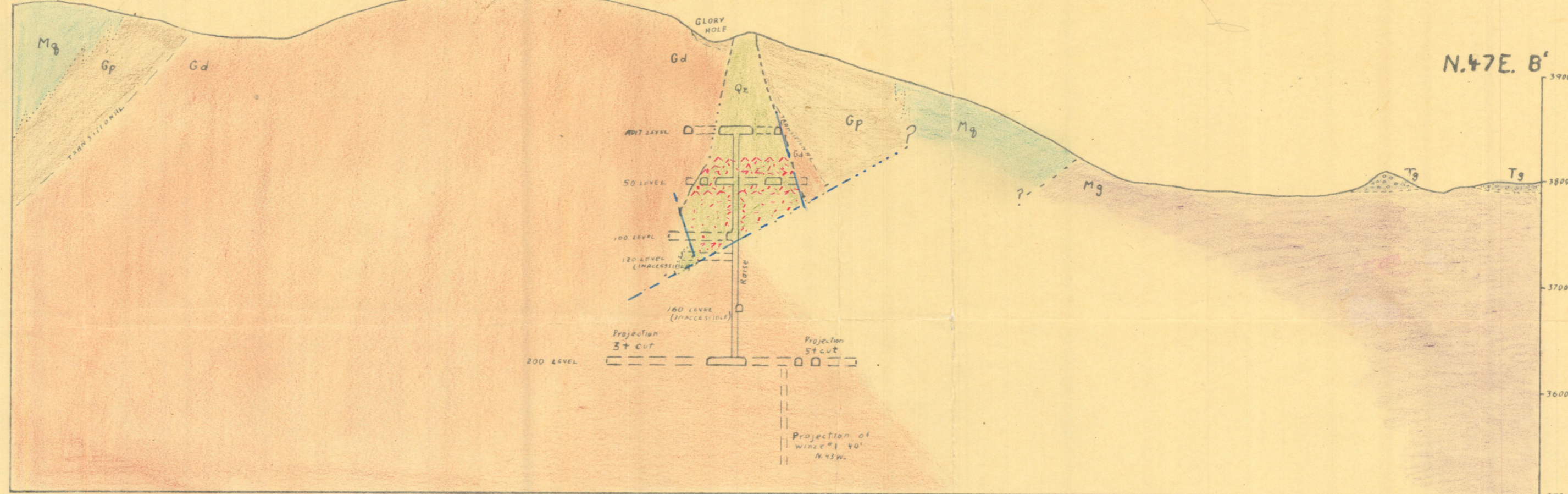
C S.21W.

N.21E. C'



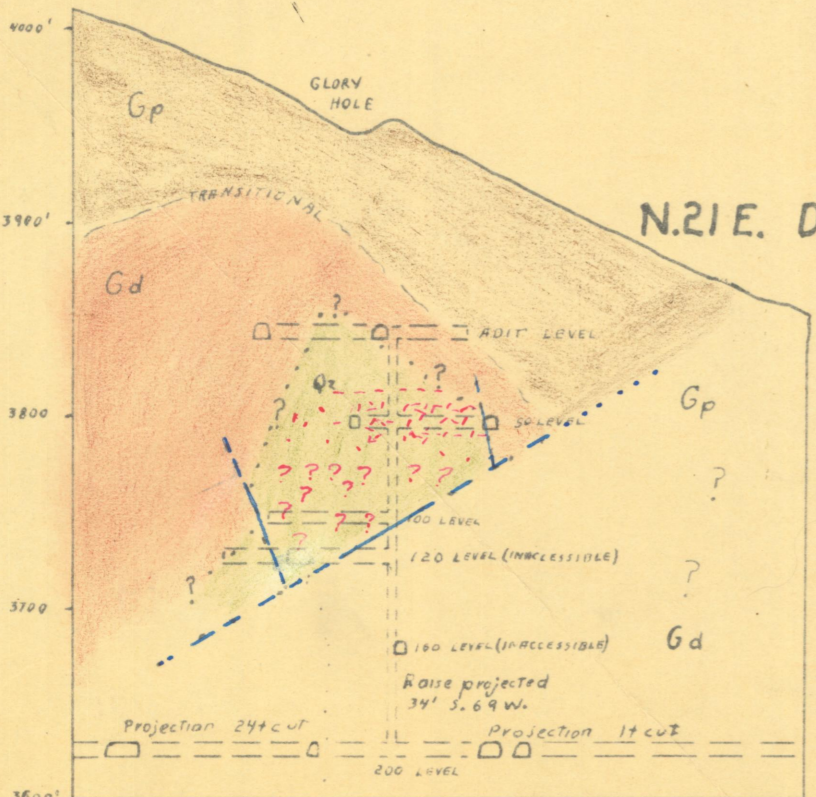
B S.47W.

N.47E. B'



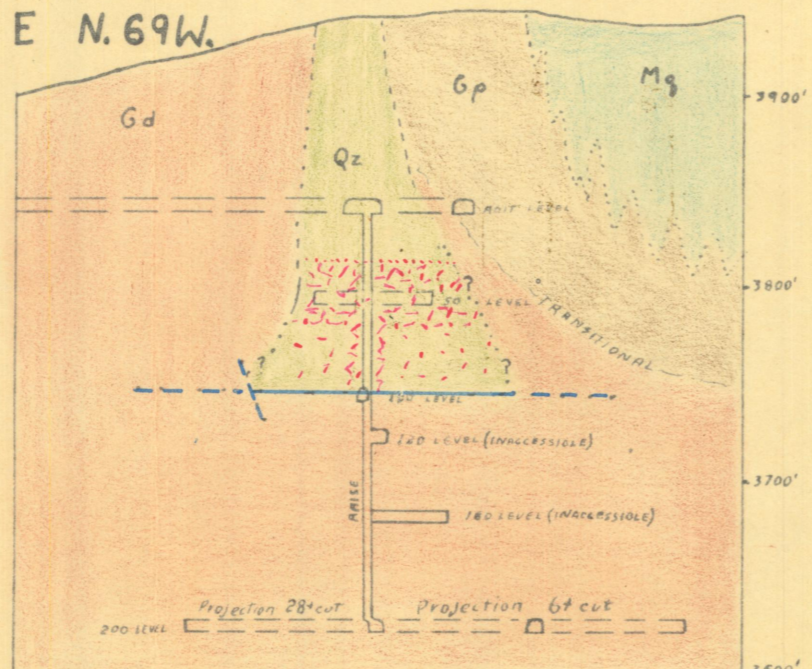
D S.21W.

N.21E. D'



E N.69W.

S.69E. E'

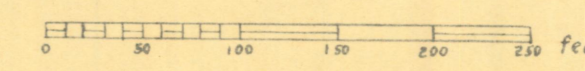


U. S. GEOLOGICAL SURVEY
CONFIDENTIAL
Not for Public Inspection or Quotation

U. S. GEOLOGICAL SURVEY
NEW YEARS EVE MINE

CROSS SECTIONS
FEBRUARY 1943

Scale: 1" = 100'
1/1200



Charles A. Anderson
Donald H. Kupfer

LEGEND

- Fault
- Molybdenite
- Quartz
- Granodiorite
- Granodiorite porphyry
- Quartzite
- Granulite