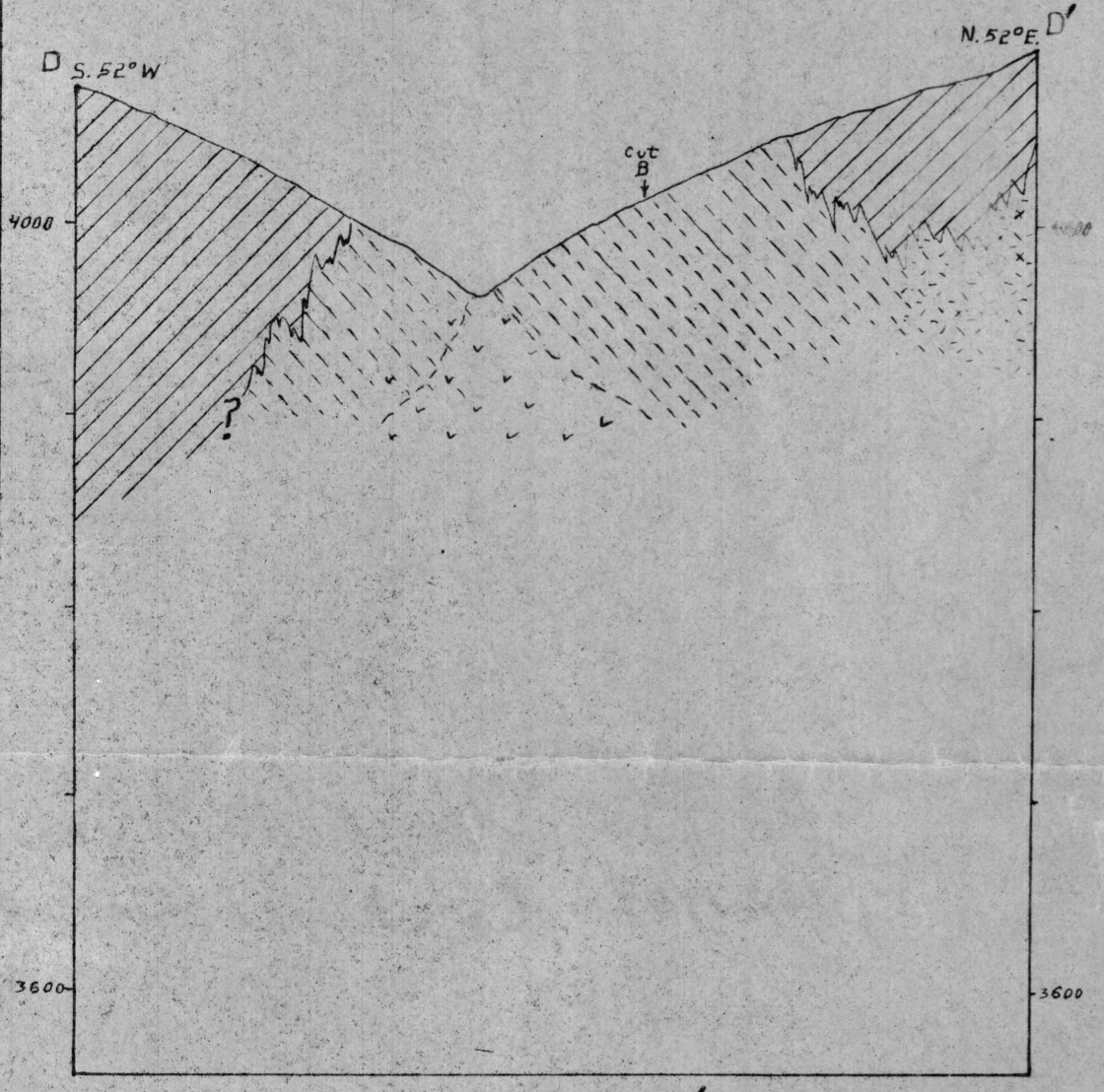
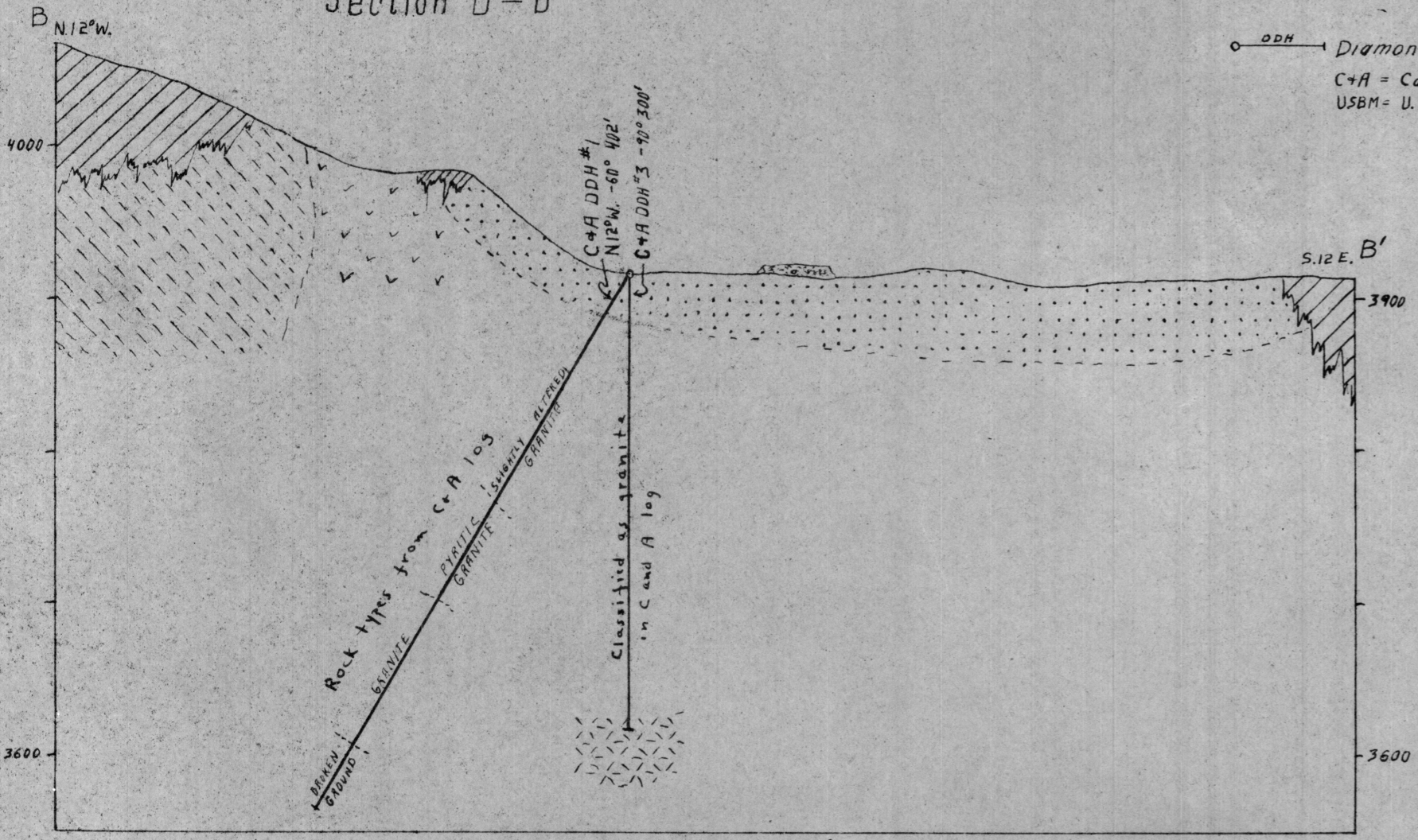


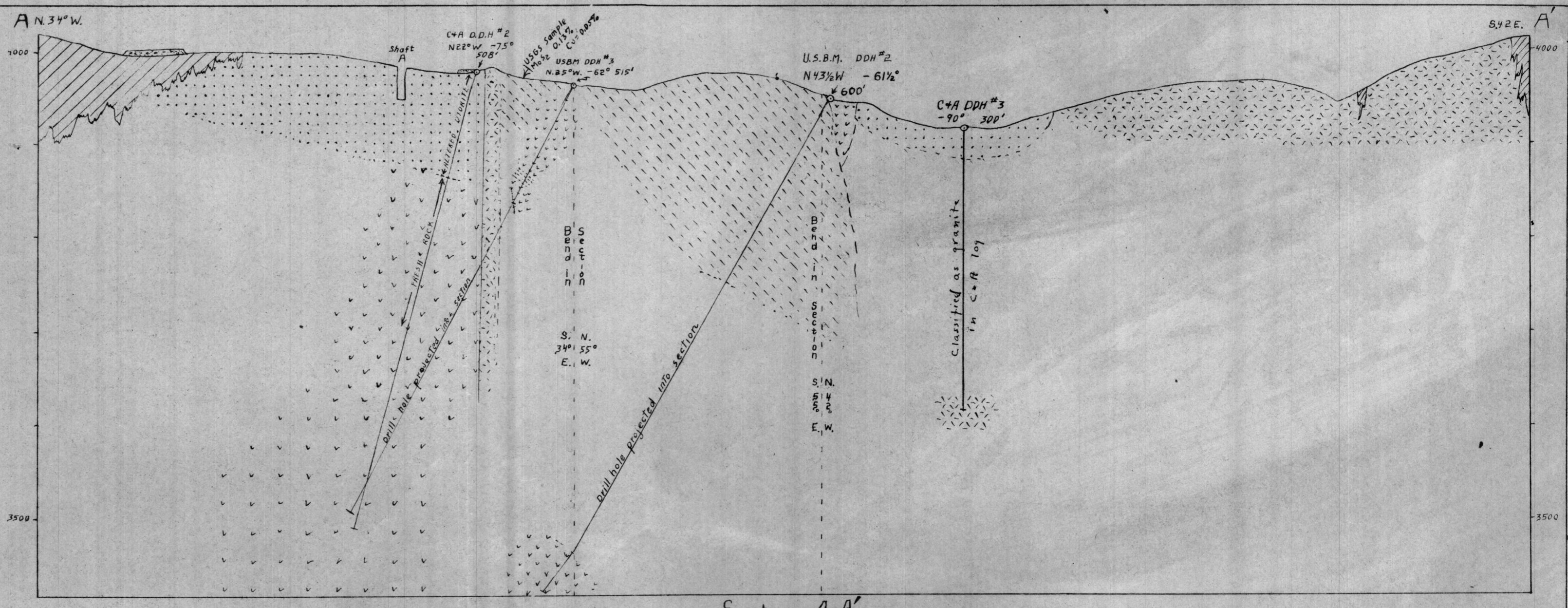
Section C-C'



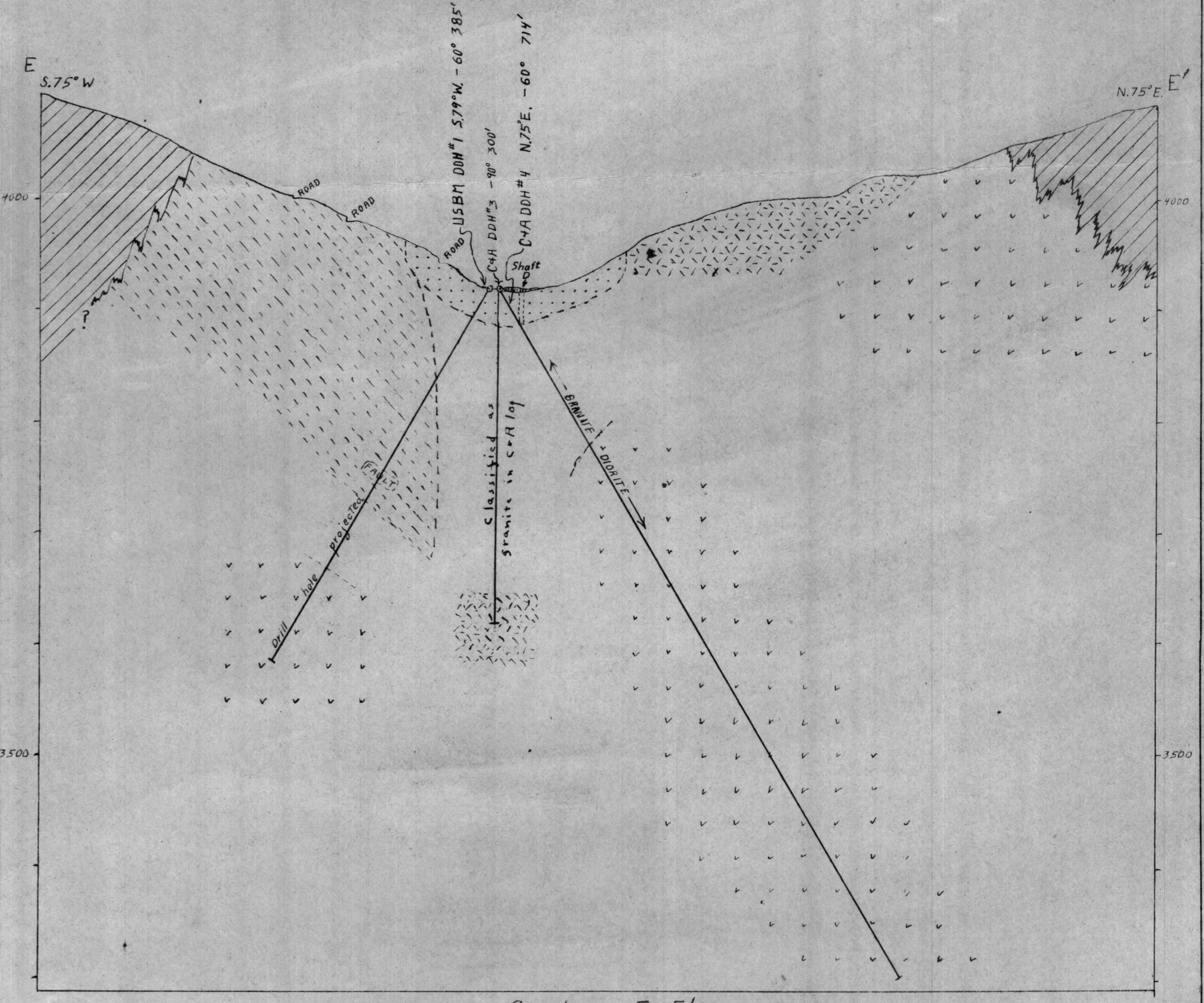
Section D-D'



Section B-B'



Section A-A'



Section E-E'

LEGEND

- Silicified breccia
- Surface alteration (clay)
- Biotite diorite
- Granodiorite porphyry
- Undifferentiated or mixed biotite diorite and granodiorite porphyry
- Quartzite

DDH Diamond drill holes by
 C+A = Colver and Arizona (1907-8)
 USBM = U.S. Bureau of Mines. (1944)

