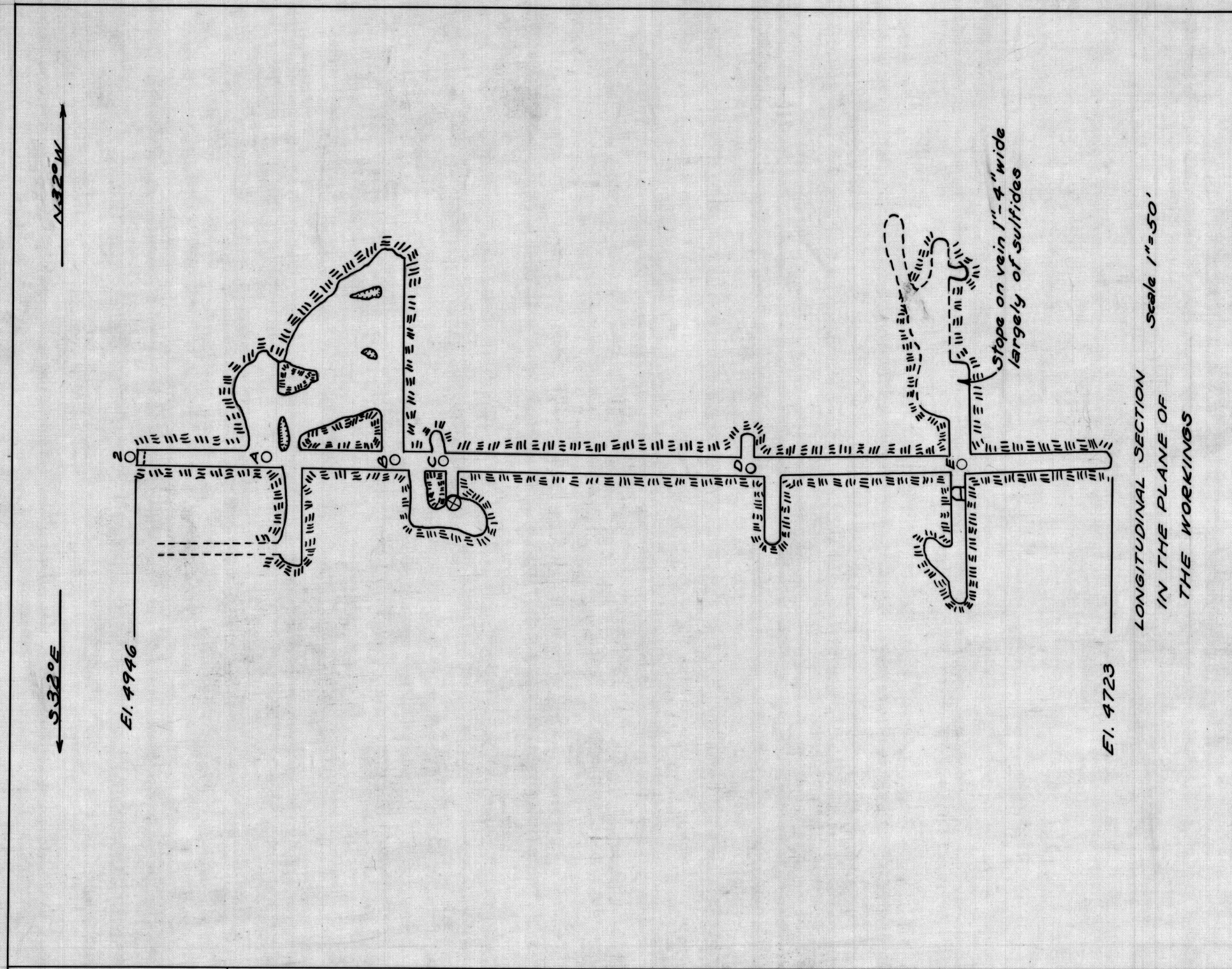
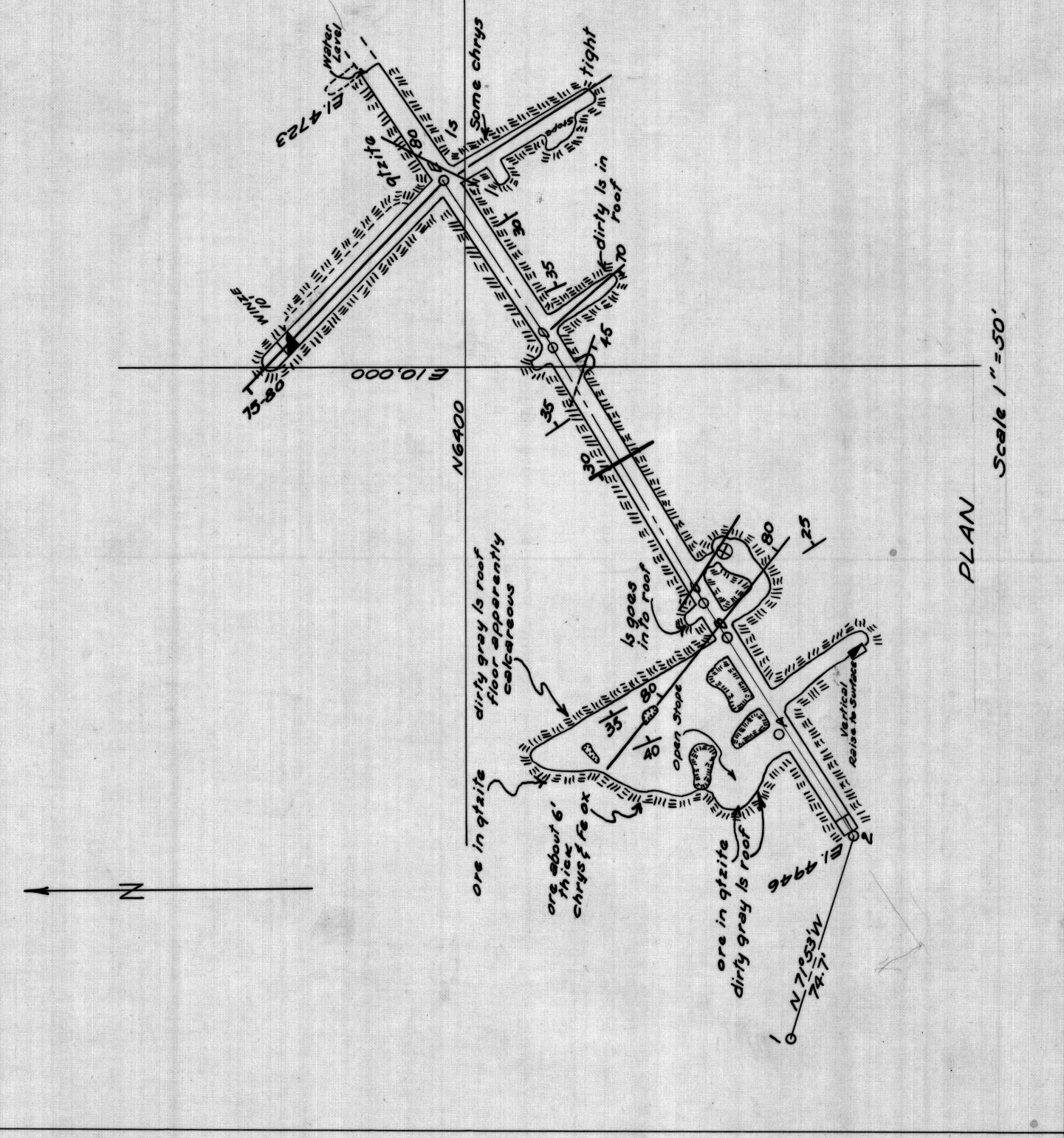


CROSS-SECTION THROUGH INCLINED SHAFT
Scale 1"=50'



LONGITUDINAL SECTION IN THE PLANE OF THE WORKINGS
Scale 1"=50'



PLAN
Scale 1"=50'

OK MINE
Keystone Mining Co.
Johnson Camp, Cochise Co., Ariz.
January 17, 1945

Geology by Eldred D. Wilson,
Ariz. Bureau of Mines
Feb. 1945

--- Contact
--- Mineralization
--- Fault
--- Pressure
--- Strike-slip dip of beds

FIG. 6